



May 30, 2025

ADDENDUM NO. 2

TO THE CONTRACT DOCUMENTS

FOR

Colton MS Pavilion Building Addition

FOR THE

Colton Joint Unified School District
1212 Valencia Drive
Colton, CA 92324

DSA #04-123039

FILE #36-14

RCA Project No. 1-15-112

NOTICE TO BIDDERS

This Addendum forms a part of the Contract and modifies the original documents of DSA Approved on June 25, 2024. It is intended that all work affected by the following modifications shall conform with related provisions and general conditions of the contract of the original drawings and specifications. Modify the following items wherever appearing in any drawing or sections of the specifications. Acknowledge receipt of Addendum No. 2 in the space provided on the Bid Form. Failure to do so may subject the bidder to disqualification.

CHANGES TO SPECIFICATIONS:

- | | |
|--------------|---|
| Item No. 2.1 | Reference Section 00 01 10 – Table of Contents: |
| 2.1.1 | Replace section 00 01 10 in its entirety per attached revised section 00 01 10. |
| Item No. 2.2 | Reference Section 11 66 23 – Gymnasium Equipment: |
| 2.2.1 | Replace section 11 66 23 in its entirety per attached revised section 11 66 23. |

CHANGES TO DRAWINGS:

CIVIL

- | | |
|--------------|--|
| Item No. 2.3 | Reference sheet C2.00 – DEMOLITION PLAN: |
| 2.3.1 | Revise sheet C2.00 per clouded areas listed below. |
| | a. Revised demolition note R4 |
| | b. Added note R4 to drawings at existing buildings |
| Item No. 2.4 | Reference sheet C3.00 – GRADING PLAN: |
| 2.4.1 | Revise sheet C3.00 per clouded area listed below. |
| | a. Revised note locker room building |

- Item No. 2.5 Reference sheet C5.00 – WET SITE UTILITY PLAN:
2.5.1 Revise sheet C5.00 per clouded areas listed below.
a. Revised note inside locker room building

ARCHITECTURAL SITE

- Item No. 2.6 Reference sheet AS-1.0 – OVERALL NEW SITE PLAN:
2.6.1 Revise sheet AS-1.0 per clouded areas in attached sketch.
a. Revised detail 4A/AS-1.0 – OVERALL NEW SITE PLAN per attached sketch ASK-2.01.
- Item No. 2.7 Reference sheet AS-2.0 – FIRE ACCESS SITE PLAN:
2.7.1 Revise sheet AS-2.0 per clouded areas in attached sketch.
a. Revised detail 1/AS-2.0 – OVERALL NEW SITE PLAN per attached sketch ASK-2.02.
- Item No. 2.8 Reference sheet AS-3.1 – ENLARGED PORTABLE RESTROOMS:
2.8.1 Remove sheet AS-3.1 in its entirety.

ARCHITECTURE

- Item No. 2.9 Reference sheet A-7.1 – INTERIOR ELEVATIONS:
2.9.1 Revise sheet A-7.1 per clouded areas listed below.
a. Revised detail 1/A-7.1 – INTERIOR ELEVATION per clouded areas.
b. Revised detail 2/A-7.1 – INTERIOR ELEVATION per clouded areas.
- Item No. 2.10 Reference sheet A-7.2 – INTERIOR ELEVATIONS:
2.10.1 Revise sheet A-7.2 per clouded areas listed below.
a. Revised detail 3/A-7.2 – INTERIOR ELEVATION per clouded areas.
b. Revised detail 4/A-7.2 – INTERIOR ELEVATION per clouded areas.

ARCHITECTURE DETAILS

- Item No. 2.11 Reference sheet AD-3.1 – ROOF DETAILS:
2.11.1 Revise sheet AD-3.1 per clouded areas in attached sketch.
a. Revised detail 7/AD-3.1 – PARAPET CAP FLASHING per attached sketch ASK-2.03.
- Item No. 2.12 Reference sheet AD-6.1 – DOOR DETAILS:
2.12.1 Revise sheet AD-6.1 per clouded areas listed below.
a. Revised detail 1/AD-6.1 – DOOR FRAME per clouded areas.
b. Revised detail 2/AD-6.1 – DOOR FRAME OPT. 2 per clouded areas.
c. Revised detail 3/AD-6.1 – DOOR FRAME ANCHOR per clouded areas.
d. Revised detail 5/AD-6.1 – HM DOOR - HEAD per clouded areas.
e. Revised detail 6/AD-6.1 – HM DOOR - JAMB per clouded areas.
f. Revised detail 8/AD-6.1 – PERFORATED MTL @ HM DOOR per clouded areas.
g. Revised detail 12/AD-6.1 – HM DOOR @ PLASTER JAMB per clouded areas.
h. Revised detail 13/AD-6.1 – HM DOOR @ PLASTER JAMB per clouded areas.
i. Revised detail 24/AD-6.1 – HM DOOR THRESHOLD per clouded areas.
j. Revised detail 30/AD-6.1 – FLR. TRANSITION THRESHOLD per clouded areas.
- Item No. 2.13 Reference sheet AD-7.1 – MISCELLANEOUS DETAILS:
2.13.1 Revise sheet AD-7.1 per clouded areas in attached sketches
a. Revised detail 9/AD-7.1 – METAL COPE FLASHING per attached sketch ASK-2.04.
b. Added detail 26/AD-7.1 – WALL PADDING @ PLASTER per attached sketch ASK-2.05.
c. Added detail 27/AD-7.1 – WALL PADDING @ CMU per attached sketch ASK-2.06.

STRUCTURAL

- Item No. 2.14 Reference sheet S-5.1 – FOUNDATION DETAILS:
2.14.1 Revise sheet S-5.1 per clouded areas listed below.
- a. Revised detail 12/S-5.1 per clouded areas.
 - b. Revised detail 14/S-5.1 per clouded areas.
 - c. Revised detail 15/S-5.1 per clouded areas.
 - d. Revised detail 16/S-5.1 per clouded areas.
 - e. Revised detail 18/S-5.1 per clouded areas.

ATTACHMENTS:

Specifications: 00 01 10, 11 66 23

Sketches: ASK-2.01, ASK-2.02, ASK-2.03, ASK-2.04, ASK-2.05, ASK-2.06,

Sheets: C2.00, C3.00, C5.00, A-7.1, A-7.2, AD-6.1, S-5.1

END OF ADDENDUM NO. 02

Roger Clarke, Principal
C-21340

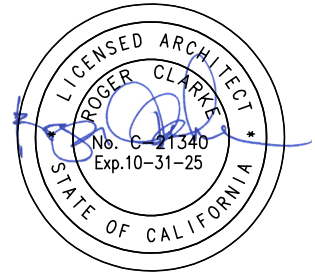


**SECTION 00 01 10
TABLE OF CONTENTS**

PROCUREMENT AND CONTRACTING REQUIREMENTS

DIVISION 00 -- PROCUREMENT AND CONTRACTING REQUIREMENTS

- 00 01 01 - Project Title Page
- 00 01 02 - Project Information
- 00 01 07 - Seals Page
- 00 01 08 - Deferred Approvals
- 00 01 10 - Table of Contents
- 00 31 00 - Available Project Information
- 00 40 25 - Request for Information
- 00 43 25 - Substitution Request Form - During Procurement
- 00 63 25 - Substitution Request Form - During Construction



Addendum 2

SPECIFICATIONS

DIVISION 01 -- GENERAL REQUIREMENTS

- 01 10 00 - Summary
- 01 20 00 - Price and Payment Procedures
- 01 23 00 - Alternates
- 01 25 00 - Substitution Procedures
- 01 30 00 - Administrative Requirements
 - 01 30 00.01 - Request for Interpretation
 - 01 30 00.02 - Submittal Transmittal
- 01 32 16 - Construction Progress Schedule
- 01 35 50 - Requests for Electronic Files
- 01 35 53 - Security Procedures
- 01 40 00 - Quality Requirements
- 01 41 00 - Regulatory Requirements
- 01 42 19 - Reference Standards
- 01 45 33 - Code-Required Special Inspections
- 01 50 00 - Temporary Facilities and Controls
- 01 51 00 - Temporary Utilities
- 01 52 13 - Field Offices and Sheds
- 01 55 00 - Vehicular Access and Parking
- 01 57 13 - Temporary Erosion and Sediment Control

- 01 58 13 - Temporary Project Signage
- 01 60 00 - Product Requirements
- 01 61 16 - Volatile Organic Compound (VOC) Content Restrictions
 - 01 61 16.01 - Accessory Material VOC Content Certification Form
- 01 70 00 - Execution and Closeout Requirements
- 01 71 23 - Field Engineering
- 01 74 19 - Construction Waste Management and Disposal
- 01 76 10 - Temporary Protective Coverings
- 01 78 00 - Closeout Submittals
 - 01 78 00.01 - Warranty Form Letter
- 01 78 39 - Project Record Documents
- 01 79 00 - Demonstration and Training

DIVISION 02 -- EXISTING CONDITIONS

- 02 41 00 - Demolition

DIVISION 03 -- CONCRETE

- 03 10 00 - Concrete Forming and Accessories
- 03 20 00 - Concrete Reinforcing
- 03 30 00 - Cast-in-Place Concrete
- 03 35 11 - Concrete Floor Finishes

DIVISION 04 -- MASONRY

- 04 05 11 - Masonry Mortaring and Grouting
- 04 20 00 - Unit Masonry

DIVISION 05 -- METALS

- 05 12 00 - Structural Steel Framing
- 05 31 00 - Steel Decking
- 05 40 00 - Cold-Formed Metal Framing
- 05 50 00 - Metal Fabrications
- 05 51 33 - Metal Ladders
- 05 75 13 - Decorative Perforated Panels

DIVISION 06 -- WOOD, PLASTICS, AND COMPOSITES

- 06 10 53 - Miscellaneous Rough Carpentry

DIVISION 07 -- THERMAL AND MOISTURE PROTECTION

- 07 25 00 - Weather Barriers
- 07 27 00 - Air Barriers
- 07 54 00 - Thermoplastic Membrane Roofing

- 07 62 00 - Sheet Metal Flashing and Trim
- 07 72 00 - Roof Accessories
- 07 92 00 - Joint Sealants
- 07 95 13 - Expansion Joint Cover Assemblies

DIVISION 08 -- OPENINGS

- 08 06 71 - Door Hardware Schedule
- 08 11 13 - Hollow Metal Doors and Frames
- 08 31 00 - Access Doors and Panels
- 08 71 00 - Door Hardware

DIVISION 09 -- FINISHES

- 09 05 61 - Common Work Results for Flooring Preparation
- 09 21 16 - Gypsum Board Assemblies
- 09 22 36 - Lath
- 09 24 00 - Cement Plastering
- 09 65 00 - Resilient Flooring
- 09 65 66 - Resilient Athletic Flooring
- 09 91 13 - Exterior Painting
- 09 91 23 - Interior Painting
- 09 96 00 - High-Performance Coatings

DIVISION 10 -- SPECIALTIES

- 10 14 19 - Dimensional Letter Signage
- 10 14 23 - Panel Signage
- 10 44 00 - Fire Protection Specialties

DIVISION 11 -- EQUIPMENT

- 11 52 13 - Projection Screens
- 11 52 16 - Audio-Video Equipment
- 11 66 23 - Gymnasium Equipment
- 11 81 29 - Facility Fall Protection

Addendum 2

DIVISION 21 -- FIRE SUPPRESSION

- 21 05 00 - Fire Protection General Requirements
- 21 05 53 - Fire Protection Identification
- 21 11 00 - Fire-Suppression Piping

DIVISION 22 -- PLUMBING

- 22 05 00 - Plumbing General Requirements
- 22 05 23 - General-Duty Valves for Plumbing Piping

- 22 05 29 - Hangers and Supports for Plumbing Piping and Equipment
- 22 05 53 - Plumbing Identification
- 22 10 05 - Plumbing Piping
- 22 40 00 - Plumbing Fixtures

DIVISION 26 -- ELECTRICAL

- 26 05 00 - Electrical General Requirements
- 26 05 19 - Low-Voltage Electrical Power Conductors and Cables
- 26 05 26 - Grounding and Bonding for Electrical Systems
- 26 05 29 - Hangers and Supports for Electrical Systems
- 26 05 33.13 - Conduit for Electrical Systems
- 26 05 33.16 - Boxes for Electrical Systems
- 26 05 53 - Identification for Electrical Systems
- 26 09 23 - Lighting Control Devices
- 26 24 16 - Panelboards
- 26 27 26 - Wiring Devices
- 26 28 16.16 - Enclosed Switches
- 26 51 00 - Interior Lighting
- 26 56 00 - Exterior Lighting

DIVISION 27 -- COMMUNICATIONS

- 27 05 00 - Technology General Requirements
- 27 10 00 - Structured Cabling
- 27 51 16 - Public Address Systems

DIVISION 28 -- ELECTRONIC SAFETY AND SECURITY

- 28 05 00 - Fire Alarm General Requirements
- 28 46 00 - Fire Detection and Alarm

DIVISION 31 -- EARTHWORK

- 31 10 00 - Site Clearing
- 31 22 00 - Grading
- 31 23 16 - Excavation
- 31 23 16.13 - Trenching
- 31 23 23 - Fill

DIVISION 32 -- EXTERIOR IMPROVEMENTS

- 32 11 23 - Aggregate Base Courses
- 32 13 13 - Concrete Paving
- 32 17 23 - Pavement Markings

- 32 31 13 - Chain Link Fences and Gates
- 32 31 19 - Decorative Metal Fences and Gates
- 32 84 00 - Irrigation System
- 32 90 00 - Planting

DIVISION 33 -- UTILITIES

- 33 01 10.58 - Disinfection of Water Utility Piping Systems
- 33 05 43 - Corrosion Protection
- 33 42 11 - Stormwater Gravity Piping

END OF SECTION

SECTION 11 66 23 GYMNASIUM EQUIPMENT

PART 1 GENERAL

1.01 SECTION INCLUDES

- A. Basketball backboards, goals, and support framing.
- B. Floor sleeves for net and goal posts.
- C. Wall mounted protection pads.

1.02 RELATED REQUIREMENTS

- A. Section 03 30 00 - Cast-in-Place Concrete: Concrete floor slab to receive floor sleeves and anchors.
- B. Section 05 12 00 - Structural Steel Framing: Structural members supporting basketball systems.
- C. Section 05 50 00 - Metal Fabrications: Secondary structural members supporting gymnasium equipment.
- D. Section 09 65 66 - Resilient Athletic Flooring: Gymnasium flooring.
- E. Division 26 - Electrical: Wiring Connections.

1.03 REFERENCE STANDARDS

- A. ASTM E84 - Standard Test Method for Surface Burning Characteristics of Building Materials; 2023c.
- B. AWS B2.1/B2.1M - Specification for Welding Procedure and Performance Qualification; 2021.
- C. AWS D1.1/D1.1M - Structural Welding Code - Steel; 2020, with Errata (2023).
- D. NFPA 70 - National Electrical Code; Most Recent Edition Adopted by Authority Having Jurisdiction, Including All Applicable Amendments and Supplements.
- E. NFPA 286 - Standard Methods of Fire Tests for Evaluating Contribution of Wall and Ceiling Interior Finish to Room Fire Growth; 2024.

1.04 ADMINISTRATIVE REQUIREMENTS

- A. Large Components: Ensure that large components can be moved into final position without damage to other construction.
- B. Electrically Operated Equipment: Coordinate location and electrical characteristics of service connection.

1.05 SUBMITTALS

- A. See Section 01 30 00 - Administrative Requirements, for submittal procedures.
- B. Product Data: Provide manufacturer's data showing configuration, sizes, materials, finishes, hardware, and accessories; include:
 - 1. Electrical characteristics and connection locations.

2. Fire rating certifications.
 3. Manufacturer's installation instructions.
- C. Shop Drawings: For custom fabricated equipment indicate, in large scale detail, construction methods; method of attachment or installation; type and gauge of metal, hardware, and fittings; plan front elevation; elevations and dimensions; minimum one cross section; utility requirements as to types, sizes, and locations.
 - D. Design Calculations: Calculate requirements for supporting equipment and for seismic restraint, signed and sealed by a California licensed structural engineer.
 - E. Submittal Procedures for Folding Basketball Backboards: Refer to Section 00 01 08 - Deferred Approvals for deferred approval by Division of the State Architect. Refer to Section 01 30 00 - Administrative Requirements for all other submittals.
 - F. Erection Drawings: Detailed dimensional requirements for proper location of equipment.
 - G. Samples: Submit samples of wall pad coverings in manufacturer's available range of colors.
 - H. Operating and maintenance data for each operating equipment item.
 - I. Welders' Qualification Statement: Welders' certificates in accordance with AWS B2.1/B2.1M and dated no more than 12 months before start of scheduled welding work.
 - J. Warranty: Submit manufacturer warranty and ensure that forms have been completed in District's name and registered with manufacturer.

1.06 QUALITY ASSURANCE

- A. Manufacturer Qualifications: Company specializing in manufacturing products specified in this section, with not less than three years of documented experience.
- B. Installer Qualifications: Company specializing in performing work of the type specified and approved by manufacturer.
- C. Welder Qualifications: Welding processes and welding operators qualified in accordance with AWS D1.1/D1.1M and no more than 12 months before start of scheduled welding work.

1.07 DELIVERY, STORAGE, AND HANDLING

- A. Deliver products to project site in manufacturer's original packaging with factory original labels attached.
- B. Store products indoors and elevated above floor; prevent warping, twisting, or sagging.
- C. Store products in accordance with manufacturer's instructions; protect from extremes of weather, temperature, moisture, and other damage.

1.08 WARRANTY

- A. See Section 01 78 00 - Closeout Submittals, for additional warranty requirements.

PART 2 PRODUCTS

2.01 MANUFACTURERS

- A. Gymnasium Equipment:
 1. Basis of Design: Draper, Inc: www.draperinc.com/#sle, or approved equal.

2. Performance Sports Systems: www.perfsports.com/#sle.
3. Porter Athletic Equipment Company: www.porterathletic.com/#sle.
4. Substitutions: See Section 01 60 00 - Product Requirements.

2.02 GENERAL REQUIREMENTS

- A. See drawings for sizes and locations, unless noted otherwise.
- B. Where mounting dimensions or sizes are not indicated, comply with applicable requirements of the following:
 1. National Federation of State High School Associations (NFHS) sports rules.
- C. Provide mounting plates, brackets, and anchors of sufficient size and strength to securely attach equipment to building structure; comply with requirements of Contract Documents.
- D. Hardware: Heavy duty steel hardware, as recommended by manufacturer.
- E. Electrical Wiring and Components: Comply with NFPA 70; provide UL-listed equipment.
- F. Structural Steel Fabrications: Welded in accordance with AWS D1.1/D1.1M, using certified welders.

2.03 BASKETBALL

- A. Basketball System: Backstop assembly, backboard, and goal.
- B. Ceiling-Suspended Backstop Assemblies: Capable of mounting both rectangular and fan-shaped backboards.
 1. Backstop 1 and 2 Framing: Center strut; ~~backward~~**forward** folding framing.
 - a. Basis of Design Product: ~~TF-20S-B~~, EZ Fold **TF-20 Basketball Backstop**, Ceiling Suspended ~~Rear~~, **Forward-Folding, Front-Braced with Safety Strap** as manufactured by Draper, Inc., or approved equal.
 2. Backstop 3 through 6 Framing: Center strut; ~~forward folding~~**stationary** framing.
 - a. Basis of Design Product: TF-20-B, ~~EZ Fold~~**Front-Braced Basketball Backstop**, Ceiling--Suspended ~~Forward-Folding~~, **Stationary** as manufactured by Draper, Inc., or approved equal.
 3. Folding Control System: Electric hoist that folds backstop with 115 volt actuator, integral limit switches that provide automatic shut-off in both positions, and safety catch with automatic reset.
 4. Height Adjuster: Raises or lowers assembly by 2 feet to adjust goal height from 8'-0" to 10'-0" AFF.
 5. Height Control System: Electric hoist that adjusts backstop with 115 volt actuator, and integral limit switches that provide automatic shut-off in both positions.
 - a. Basis of Design Product: Model no. 503285 electric winch as manufactured by Draper, Inc., or approved equal.
 6. Framing Color: Manufacturer's standard.
 7. Safety Strap: Safety Strap is designed to engage instantly whenever a cable or other lifting mechanism fails.
 - a. Basis of Design Product: Model no. 503229 Aut-O-Loc 2 safety strap as manufactured by Draper, Inc., or approved equal.

- C. Backboards: Tempered glass, rectangular shaped.
 - 1. **Basis of Design Product: Model 503136 backboard as manufactured by Draper, Inc., or approved equal.**
 - ~~1.2.~~ Frame: Brushed aluminum edge, steel mounting.
 - ~~2.3.~~ Provide conversion frame, mountable on both assemblies designed for fan shaped backboards and assemblies designed for rectangular backboards.
 - ~~3.4.~~ Dimensions: 42 inches high by 72 inches wide
 - ~~4.5.~~ Markings: Painted.
 - ~~5.6.~~ Provide safety padding for bottom edge of backboard.
 - a. Basis of Design Product: Model 5032XX bolt-on backboard safety padding as manufactured by Draper, Inc., or approved equal.
 - ~~6.7.~~ Provide mounting kit.
 - ~~7.8.~~ Color: Manufacturer's standard.
 - ~~8.9.~~ Basis of Design Product: Model 503136 rectangular glass backboard as manufactured by Draper, Inc., or approved equal.
- D. Goals: Steel rim, mounted to backboard, with attached nylon net; complete with mounting hardware.
 - 1. Net Attachment Device: Tube-tie.
 - 2. Breakaway mechanism, adjustable.
 - 3. Provide safety pad for goal mounting.
 - 4. Finish: Powder coat orange.
 - 5. Basis of Design Product: Model 503581 tube-tie breakaway goal as manufactured by Draper, Inc., or approved equal.

2.04 FLOOR-MOUNTED EQUIPMENT

- A. Volley Ball Nets and Posts: Two court system of adjustable posts, net, and tensioning winch meeting all requirements for FIVB, USA Volleyball, NCAA and NFHS competition requirements.
 - 1. Posts: 3-1/2 inch O.D. schedule 80 aluminum tube with 1 inch height adjustments between 42 and 96 inches.
 - 2. Net: 4 inch square #36 nylon cord with vinyl coated polyester hem, double stitched around the perimeter.
 - a. Top Hem Reinforcing: 2000 pound minimum break strength galvanized aircraft cable in nylon coating.
 - b. Bottom Hem Reinforcing: 1/4 inch diameter braided nylon rope with spring loaded, pressure type rope tensioner.
 - c. Size: Regulation size.
 - 3. Tensioning Winch: Manual crank heavy duty, self-locking worm gear mechanism.
 - 4. Protective Pads: Polyethylene foam covered with polyester reinforced vinyl fabric.
 - 5. Basis of Design Product: Model 500001 PVS-01 Power Volleyball System as manufactured by Draper, Inc., or approved equal.

- B. Protective Pads for Standards: Pads hinged at corners to fold neatly around posts and tensioning winch to provide maximum player protection. Constructed of 1-1/2" thick polyethylene foam filler covered with polyester reinforced vinyl with three (3) hook and loop fastening straps.
 - 1. Basis of Design Product: Model 5011XX Official Padding for 3-1/2" O.D. Volleyball Systems as manufactured by Sportsfield Specialties, or approved equal.
- C. Floor Sleeves for Posts: Metal sleeve, with latch cover, cast into concrete subfloor to hold poles for nets and goals; installed flush with finish floor surface.
 - 1. Latch Cover: Brass, round; tamper resistant lock with key.
 - 2. Sleeve: Steel.
 - 3. Depth of Sleeve: 9 inches from floor surface to bottom, including latch cover.

2.05 WALL PADDING

- A. Wall Padding: Foam filling bonded to backing board, wrapped in covering; each panel fabricated in one piece.
 - 1. Surface Burning Characteristics: Flame spread index (FSI) of 25 or less, smoke developed index (SDI) of 450 or less, Class A, when tested in accordance with ASTM E84 as a complete panel.
 - 2. Flammability: Comply with NFPA 286.
 - 3. Covering: Vinyl-coated polyester fabric, mildew and rot resistant; stapled to back of board.
 - a. Color: As selected from manufacturer's standard range.
 - b. Texture: Embossed leather-look.
 - c. Custom Graphics: To be supplied by District.
 - 1) Custom Artwork: As indicated on the Drawings.
 - 2) Graphics are to be printed on pads by a digital 3-color process.
 - 3) Screen print graphic pads or those made with adhesive vinyl are not considered equal.
 - 4) Protect graphics with a clear, 3-mil thick laminate coating to protect against abrasion and fading.
 - d. Fabric Weight: 14 oz/sq yd, minimum.
 - 4. Foam: Urethane, firm, 6 pcf nominal density.
 - 5. Foam, Fire-Rated: Open cell polychloroprene (Neoprene), with 5.5 pcf nominal density.
 - 6. Foam Thickness: 2 inches.
 - 7. Backing Board: Oriented strand board.
 - a. Thickness: 7/16 inch.
 - 8. Panel Dimensions: 24 inches wide by 72 inches long, including nailing margins.
 - 9. Fastening Margins: 1 inch wide, covered by fabric covering.
 - 10. Mounting: Removable; Z-clips fixed to wall and to padding.

11. WP-1 Basis of Design Product: Prozone Field Wall Padding as manufactured by Sportsfield Specialties, or approved equal.

PART 3 EXECUTION

3.01 EXAMINATION

- A. Take field measurements to ensure proper fitting of work. If taking field measurements before fabrication will delay work, allow for adjustments within recommended tolerances.
- B. Inspect areas and conditions before installation, and notify Architect in writing of unsatisfactory or detrimental conditions.
- C. Do not proceed with this work until conditions have been corrected; commencing installation constitutes acceptance of work site conditions.
- D. Verify that electrical services are correctly located and have proper characteristics.

3.02 INSTALLATION

- A. Install in accordance with Contract Documents and manufacturer's instructions.
- B. Coordinate installation of inserts and anchors that must be built in to flooring or subflooring.
- C. Install equipment rigid, straight, plumb, and level.
- D. Secure equipment with manufacturer's recommended anchoring devices.
- E. Install wall padding securely, with edges tight to wall and without wrinkles in fabric covering.
- F. Separate dissimilar metals to prevent electrolytic corrosion.

3.03 ADJUSTING

- A. Verify proper placement of equipment.
- B. Verify proper placement of equipment anchors and sleeves, and use actual movable equipment to be anchored if available.
- C. Adjust operating equipment for proper operation; remove and replace equipment causing noise or vibration; lubricate equipment as recommended by manufacturer.

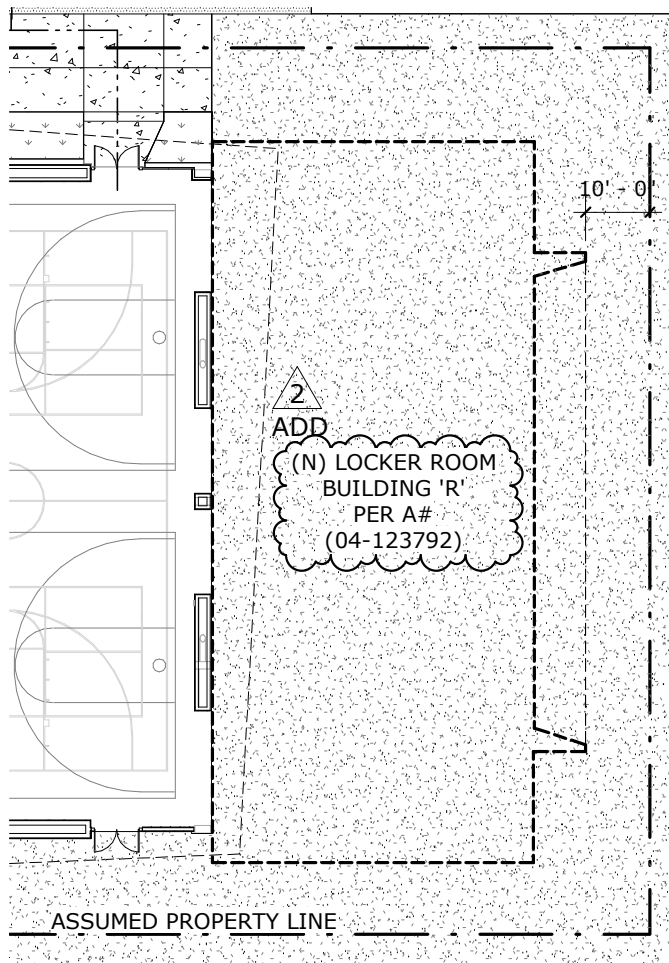
3.04 CLEANING

- A. Remove masking or protective covering from finished surfaces.
- B. Clean equipment in accordance with manufacturer's recommendations.

3.05 PROTECTION

- A. Protect installed products until Date of Substantial Completion.
- B. Replace damaged products before Date of Substantial Completion.

END OF SECTION



DELTA # 2 DATE 05/30/25 ☒ ADD ☐ AFO ☐ CCD ☐ REV

Description :

4A/AS-1.0 - OVERALL NEW SITE PLAN

Scale:

1" = 30'-0"

COLTON MIDDLE SCHOOL PAVILION BUILDING ADDITION COLTON JOINT UNIFIED SCHOOL DISTRICT

5/30/2025 11:07:15 AM

RUHNAUCLARKE.COM
3775 TENTH STREET, RIVERSIDE CALIFORNIA 92501(951) 684 4664
5751 PALMER WAY, SUITE C, CARLSBAD CALIFORNIA 92010(760) 438 5899

RUHNAU
CLARKE
ARCHITECTS

DSA APN #:

04-123039

DSA File #:

36-H4

Date:

05/30/25

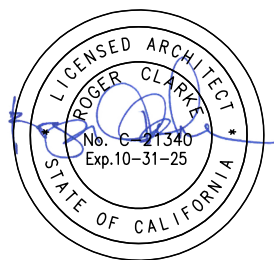
Project #:

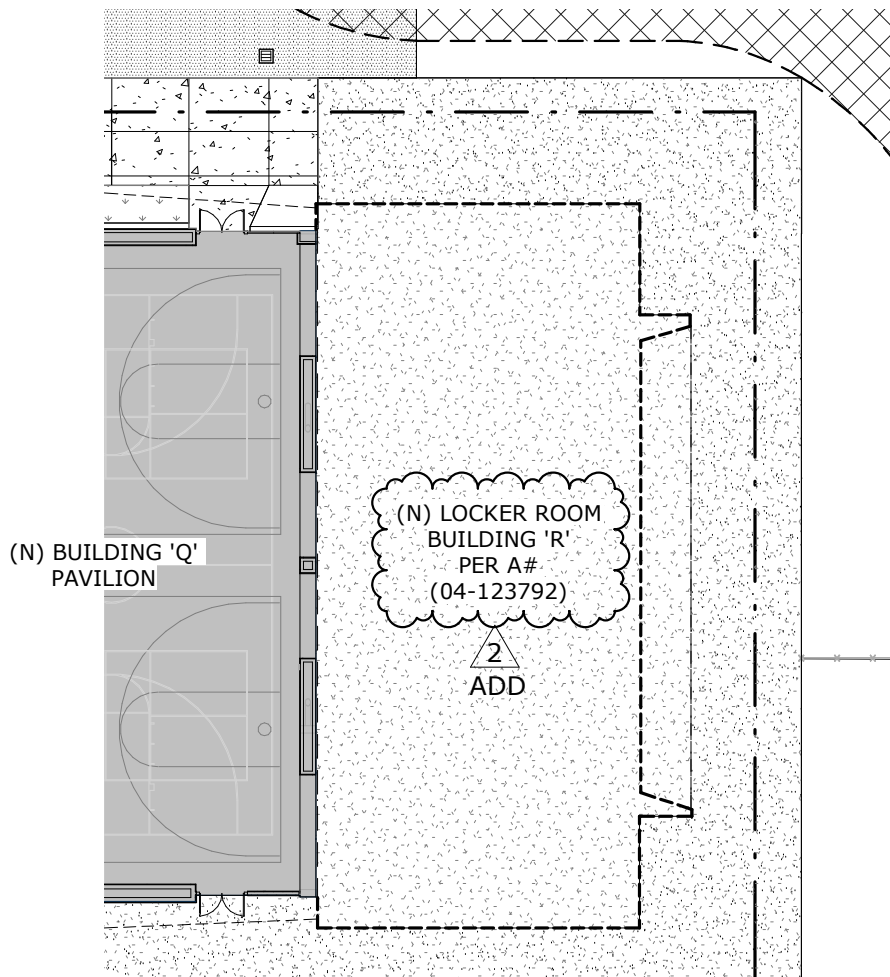
1-15-112

Sheet #:

ASK-2.01

Stamp:





DELTA # 2 DATE 05/30/25 ☒ ADD ☐ AFO ☐ CCD ☐ REV

1/AS-2.0 - FIRE ACCESS SITE PLAN

Scale: **1" = 30'-0"**

COLTON MIDDLE SCHOOL PAVILION BUILDING ADDITION COLTON JOINT UNIFIED SCHOOL DISTRICT

5/30/2025 11:11:27 AM

RUHNAUCLARKE.COM
3775 TENTH STREET, RIVERSIDE CALIFORNIA 92501(951) 684 4664
5751 PALMER WAY, SUITE C, CARLSBAD CALIFORNIA 92010(760) 438 5899

RUHNAU
CLARKE
ARCHITECTS

DSA APN #: 04-123039

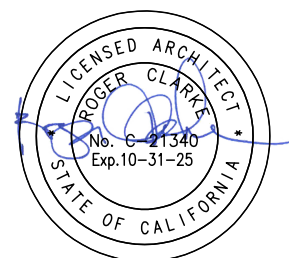
DSA File #: 36-H4

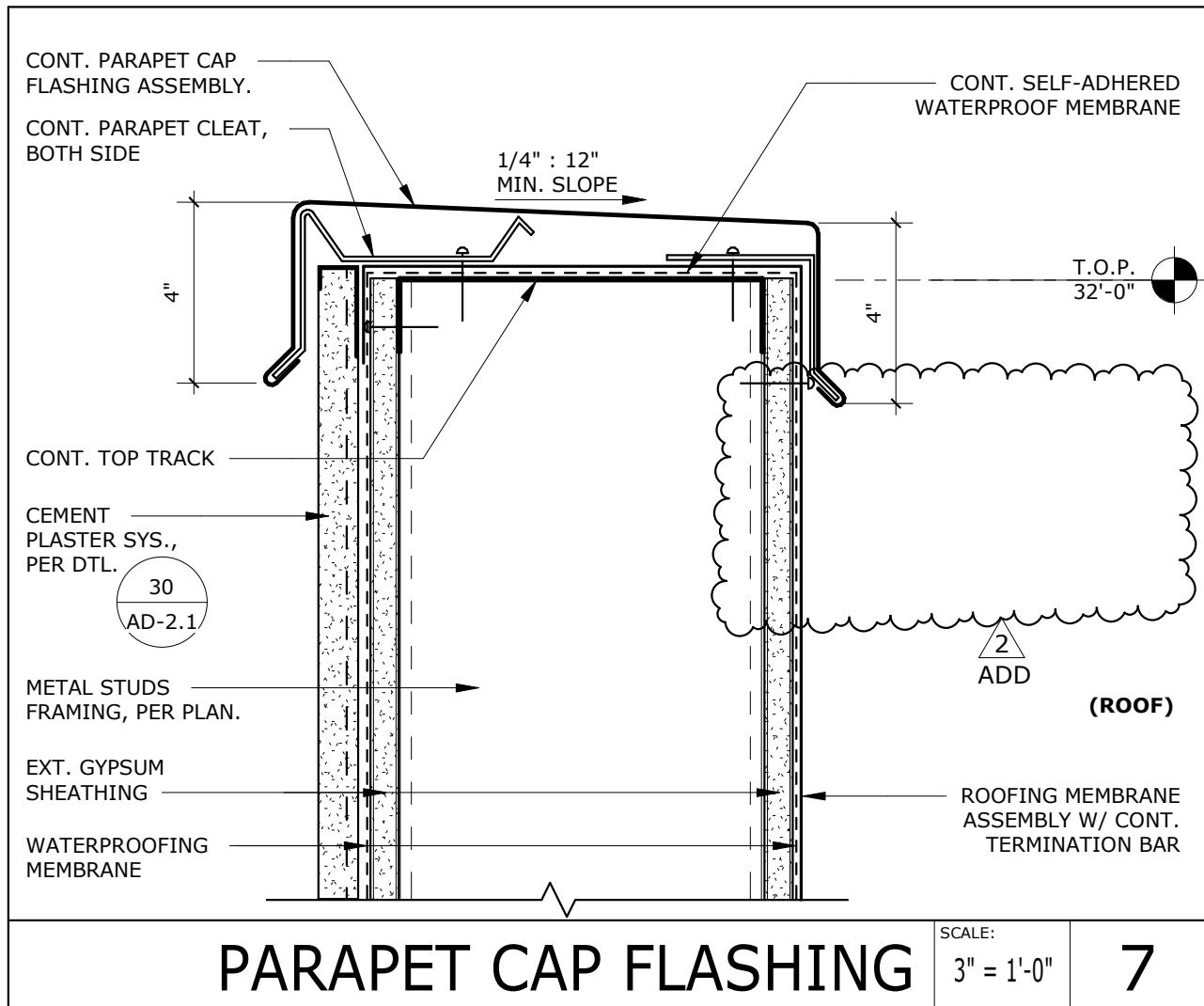
Date: 05/30/25

Project #: 1-15-112

Sheet #: **ASK-2.02**

Stamp:





DELTA # 2 DATE 05/30/25 ☒ ADD ☐ AFO ☐ CCD ☐ REV

7/AD-3.1 - PARAPET CAP FLASHING

3" = 1'-0"

**COLTON MIDDLE SCHOOL PAVILION BUILDING ADDITION
COLTON JOINT UNIFIED SCHOOL DISTRICT**

5/30/2025 11:15:42 AM

RUHNAUCLARKE.COM
3775 TENTH STREET, RIVERSIDE CALIFORNIA 92501(951) 684 4664
5751 PALMER WAY, SUITE C, CARLSBAD CALIFORNIA 92010(760) 438 5899

RUHNAU
CLARKE
ARCHITECTS

DSA APN #: 04-123039

DSA File #: 36-H4

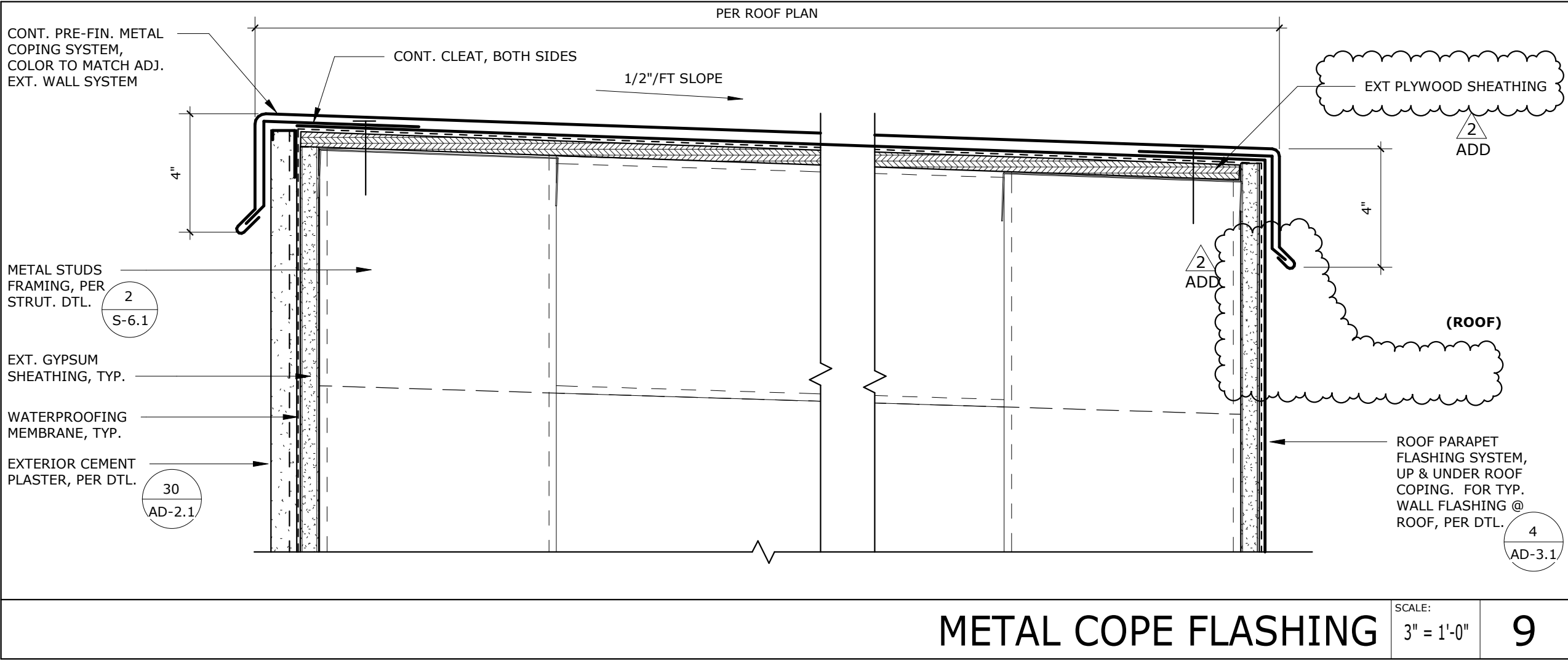
Date: 05/30/25

Project #: 1-15-112

Sheet #: **ASK-2.03**

Stamp:





DELTA # 2 DATE 05/30/25 ☐ ADD ☐ AFO ☐ CCD ☐ REV

9/AD-7.1 - METAL COPE FLASHING

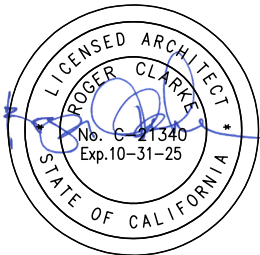
3" = 1'-0"

COLTON MIDDLE SCHOOL PAVILION BUILDING ADDITION
COLTON JOINT UNIFIED SCHOOL DISTRICT

RUHNAUCLARKE.COM
3775 TENTH STREET, RIVERSIDE CALIFORNIA 92501 (951) 684 4664
5751 PALMER WAY, SUITE C, CARLSBAD CALIFORNIA 92010 (760) 438 5899

RUHNAU
CLARKE
ARCHITECTS

DSA APN #:
04-123039
DSA File #:
36-H4
Date:
05-23-25
Project #:
1-15-112
Sheet #:
ASK-2.04





HT. AS NOTED
IN ELEVATIONS **A-7.1 & A-7.2**

"J" CHANNEL AT TOP AND BOTTOM

2" THICK ECOVISION WALL
PAD PANELS. A STANDARD
24"W x 72"H PER SPEC
SEC **11 66 23**

TOP & BOTTOM WALL BRACKET:
CONT. ENTIRE LENGTH OF PANEL
HORIZ. GALV. STEEL WALL
BRACKET 16 GA. Z-CLIP. ATTACH
W/ #14 SMS @ 10" O.C & 2" FROM
ENDS, TYP.

BASE PER FINISH SCHEDULES

FLOORING PER FINISH SCHED.



A.F.F.
0"

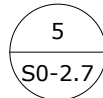
4" BASE

NOTES:

1- WALL PADDING DETAILS
BASED ON MANUFACTURE
ATTACHMENT DETAILS AND
SPECIFICATIONS. REFER TO
MANUFACTURER'S INSTALLATION
TO BE COMPLETED IN
ACCORDANCE SPECIFIC
HARDWARE AND ATTACHMENT.

2- ALL WALL PAD CUTOUTS FOR
ELECTRICAL AND/OR
MECHANICAL COMPONENTS
REFER TO MANUFACTURER'S
INSTALLATION

METAL BACKING PER



1 1/2" MIN
EMBED

CEMENT PLASTER ASSEMBLY
PER PLAN

5/8" TYPE 'X' EXT. GYPSUM
SHEATHING WHERE OCCURS

2
ADD

WALL PADDING @ PLASTER

SCALE:

3" = 1'-0"

26

DELTA # 2 DATE 05/30/25 ☒ ADD ☐ AFO ☐ CCD ☐ REV

26/AD-7.1 - WALL PADDING @ PLASTER

3" = 1'-0"

**COLTON MIDDLE SCHOOL PAVILION BUILDING ADDITION
COLTON JOINT UNIFIED SCHOOL DISTRICT**

5/29/2025 3:31:48 PM

RUHNAUCLARKE.COM
3775 TENTH STREET, RIVERSIDE CALIFORNIA 92501(951) 684 4664
5751 PALMER WAY, SUITE C, CARLSBAD CALIFORNIA 92010(760) 438 5899

RUHNAU
CLARKE
ARCHITECTS

DSA APN #:

04-123039

DSA File #:

36-H4

Date:

05/30/25

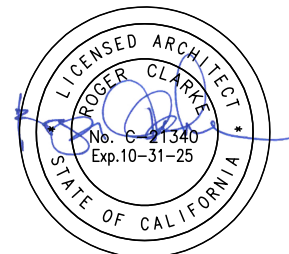
Project #:

1-15-112

Sheet #:

ASK-2.05

Stamp:





HT. AS NOTED
IN ELEVATIONS **A-7.1 & A-7.2**

"J" CHANNEL AT TOP AND BOTTOM

2" THICK ECOVISION WALL
PAD PANELS. A STANDARD
24"W x 72"H PER SPEC
SEC **11 66 23**

TOP & BOTTOM WALL BRACKET:
CONT. ENTIRE LENGTH OF PANEL
HORIZ. GALV. STEEL WALL
BRACKET 16 GA. Z-CLIP. ATTACH
W/ 3/8" DIA. HILTI KB-TZ W/ 2"
EMBED (ICC ESR-1917)
@ 12" O.C & 2" FROM ENDS, TYP.

BASE PER FINISH SCHEDULES

FLOORING PER FINISH SCHED.



A.F.F.
0"

4" BASE

2" MIN.
EMBED

CMU WALL PER PLAN

NOTES:

1-WALL PADDING DETAILS
BASED ON MANUFACTURE
ATTACHMENT DETAILS AND
SPECIFICATIONS. REFER TO
MANUFACTURER'S INSTALLATION
TO BE COMPLETED IN
ACCORDANCE SPECIFIC
HARDWARE AND ATTACHMENT.

2- ALL WALL PAD CUTOUTS FOR
ELECTRICAL AND/OR
MECHANICAL COMPONENTS
REFER TO MANUFACTURER'S
INSTALLATION

2
ADD

WALL PADDING @ CMU

SCALE:

3" = 1'-0"

27

DELTA # 2 DATE 05/30/25 ☒ ADD ☐ AFO ☐ CCD ☐ REV

27/AD-7.1 - WALL PADDING @ CMU

3" = 1'-0"

**COLTON MIDDLE SCHOOL PAVILION BUILDING ADDITION
COLTON JOINT UNIFIED SCHOOL DISTRICT**

5/29/2025 3:31:48 PM

RUHNAUCLARKE.COM
3775 TENTH STREET, RIVERSIDE CALIFORNIA 92501(951) 684 4664
5751 PALMER WAY, SUITE C, CARLSBAD CALIFORNIA 92010(760) 438 5899

RUHNAU
CLARKE
ARCHITECTS

DSA APN #:
04-123039

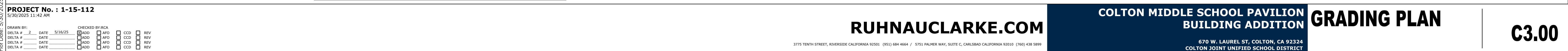
DSA File #:
36-H4

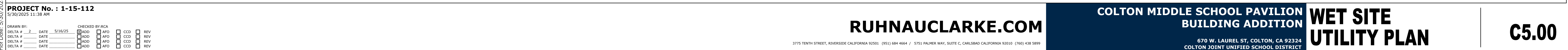
Date:
05/30/25

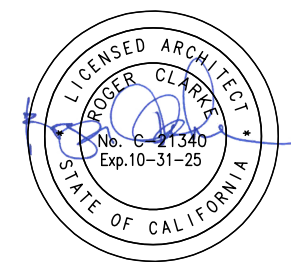
Project #:
1-15-112

Sheet #:
ASK-2.06









AGENCY APPROVAL
FID No: 36-94 3/104-123079

STAMPS

CONSULTANT BRANDING

RUHNAU
CLARKE
ARCHITECTS

GENERAL NOTES

- VERIFY ALL DIMENSIONS PRIOR TO CONSTRUCTION
- ALL DIMENSIONS ARE FACE OF STUDS, CENTERLINE OR COLUMN OR EDGE OF SLAB, U.N.D.
- PROVIDED STUD BRACING AND SUPPORT FOR ALL WALL MOUNTED FIXTURES AND ACCESSORIES.

PER DET. 5
SD-2.7

KEYNOTES

| | |
|-------------|--|
| 05 10 01 | STRUCTURAL STEEL COLUMN PER STRUCTURAL DWGS. |
| 05 10 02 | STRUCTURAL BRACE FRAME PER STRUCTURAL DWGS. |
| 05 12 00 | STRUCTURAL STEEL FRAMING |
| 05 75 00 | DECORATIVE FORMED METAL |
| 05 75 13 | DECORATIVE METAL PANEL SYSTEM |
| 09 24 00 | CEMENT PLASTERING |
| 09 24 11 | CEMENT PLASTER JOINT |
| 10 44 00.1 | RECESSED FIRE EXTINGUISHER CABINET |
| 11 66 23.53 | WALL PAD |
| 27 05 00 | PROJECTOR EQUIP. & LOCKABLE CAGE, PER TECHNOLOGY DWG. MOUNTED TO Wx COLUMN, SEE STRUCT. DWG. |

INTERIOR ELEVATION

SCALE: 1/4" = 1'-0"

1

INTERIOR ELEVATIONS LEGEND

CONCRETE MASONRY UNIT WALL (CMU-1)
SEE SPECIFICATION SECTION - 09 20 00

DECORATIVE PERFORATED PANELS (MWP-1)
SEE SPECIFICATION SECTION - 05 75 13

DECORATIVE NON-PERFORATED PANELS (MWP-2)
SEE SPECIFICATION SECTION - 05 75 13

CEMENT PLASTER (CPL-1)
SEE SPECIFICATION SECTION - 09 24 00

CEMENT PLASTER (CPL-2)
SEE SPECIFICATION SECTION - 09 24 00

HIGH PERFORMANCE COATINGS (P-4)
SEE SPECIFICATION SECTION - 09 96 00

HIGH PERFORMANCE COATINGS (P-5)
SEE SPECIFICATION SECTION - 09 96 00

WALL MATS (WP-1)
SEE SPECIFICATION SECTION - 11 66 23

NOTE:
REFER TO COLORS, MATERIALS AND FINISHES LEGEND FOR ADDITIONAL INFORMATION

INTERIOR ELEVATION

SCALE: 1/4" = 1'-0"

2

PROJECT No. :1-15-112

5/30/2025 11:27:47 AM

DRAWN BY: _____ CHECKED BY: _____
DELTA # _____ DATE _____
DELTA # _____ DATE _____
DELTA # _____ DATE _____

RUHNAUCLARKE.COM

3775 TENTH STREET, RIVERSIDE CALIFORNIA 92503 (951) 684-4664 / 5751 PALMER WAY, SUITE C, CARLSBAD CALIFORNIA 92008 (760) 438-5899

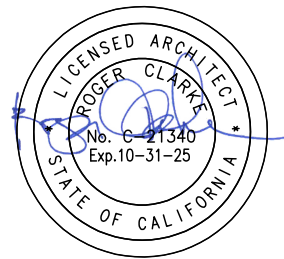
COLTON MIDDLE SCHOOL PAVILION
BUILDING ADDITION

670 W. LAUREL ST, COLTON, CA 92324
COLTON JOINT UNIFIED SCHOOL DISTRICT

INTERIOR ELEVATIONS

A-7.1

COLTON MIDDLE SCHOOL PAVILION BUILDING ADDITION: DSA BACKCHECK SET - 06/25/2024



AGENCY APPROVAL
FIS No: 36-94 5/104-123079

STAMPS

CONSULTANT BRANDING

RUHNAU
CLARKE
ARCHITECTS

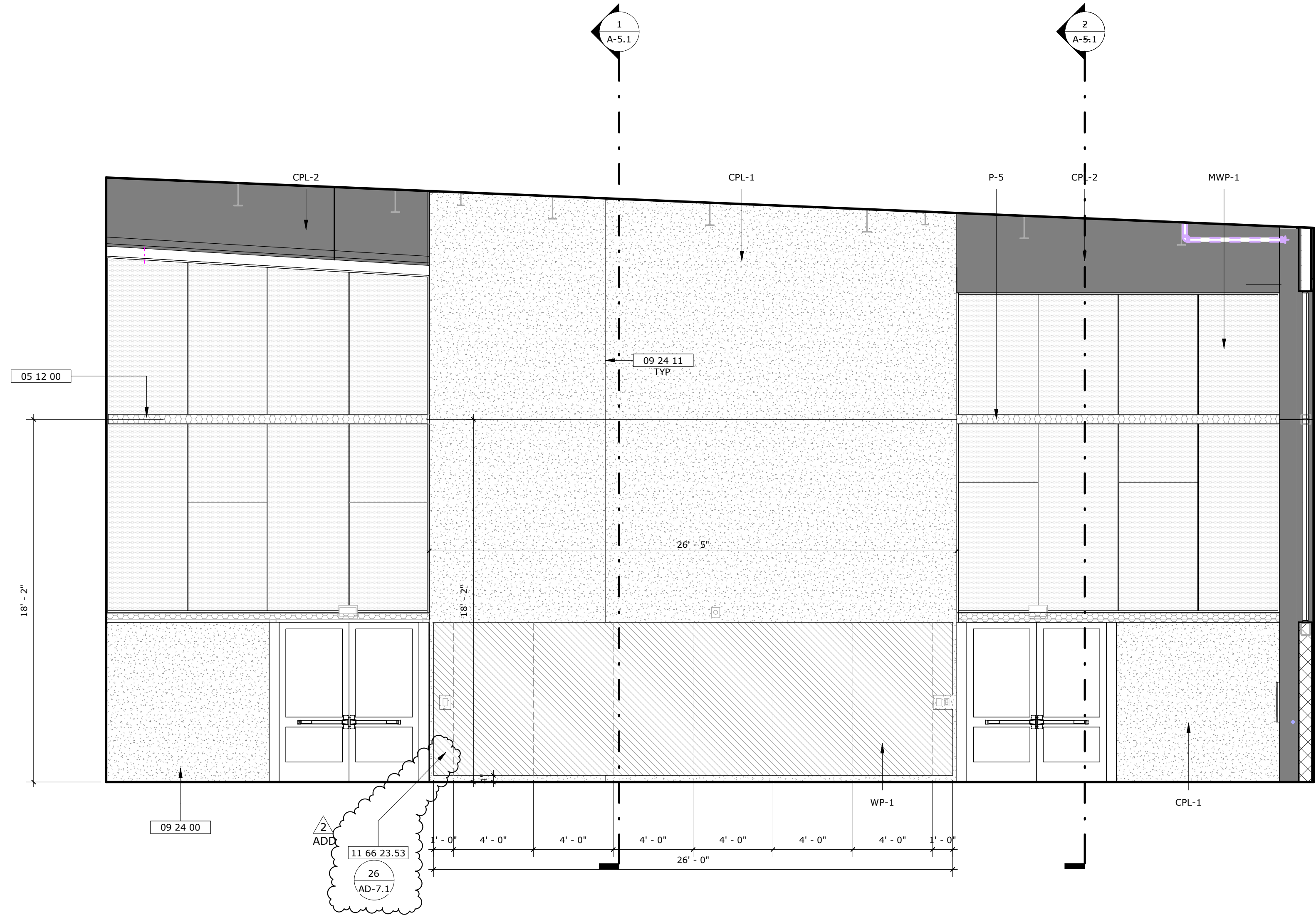
GENERAL NOTES

1. VERIFY ALL DIMENSIONS PRIOR TO CONSTRUCTION
2. ALL DIMENSIONS ARE FACE OF STUDS, CENTERLINE OR COLUMN OR EDGE OF SLAB, U.N.O.
3. PROVIDED STUD BRACING AND SUPPORT FOR ALL WALL MOUNTED FIXTURES AND ACCESSORIES.

PER DET.

KEYNOTES

| | |
|-------------|--|
| 05 12 00 | STRUCTURAL STEEL FRAMING |
| 07 92 00 | JOINT SEALANT |
| 09 24 00 | CEMENT PLASTERING |
| 09 24 11 | CEMENT PLASTER JOINT |
| 10 44 00.1 | RECESSED FIRE EXTINGUISHER CABINET |
| 11 52 15 | BOTTOM OF PROJECTION SCREEN, WHEN IS FULLY DEPLOYED/IN-USE |
| 11 66 23.53 | WALL PAD |
| 27 05 02 | PROJECTION SCREEN & CASING, PER TECHNOLOGY DWG. SEE STRUCT. DTL. FOR HSS FRAMING SUPPORT |



INTERIOR ELEVATION

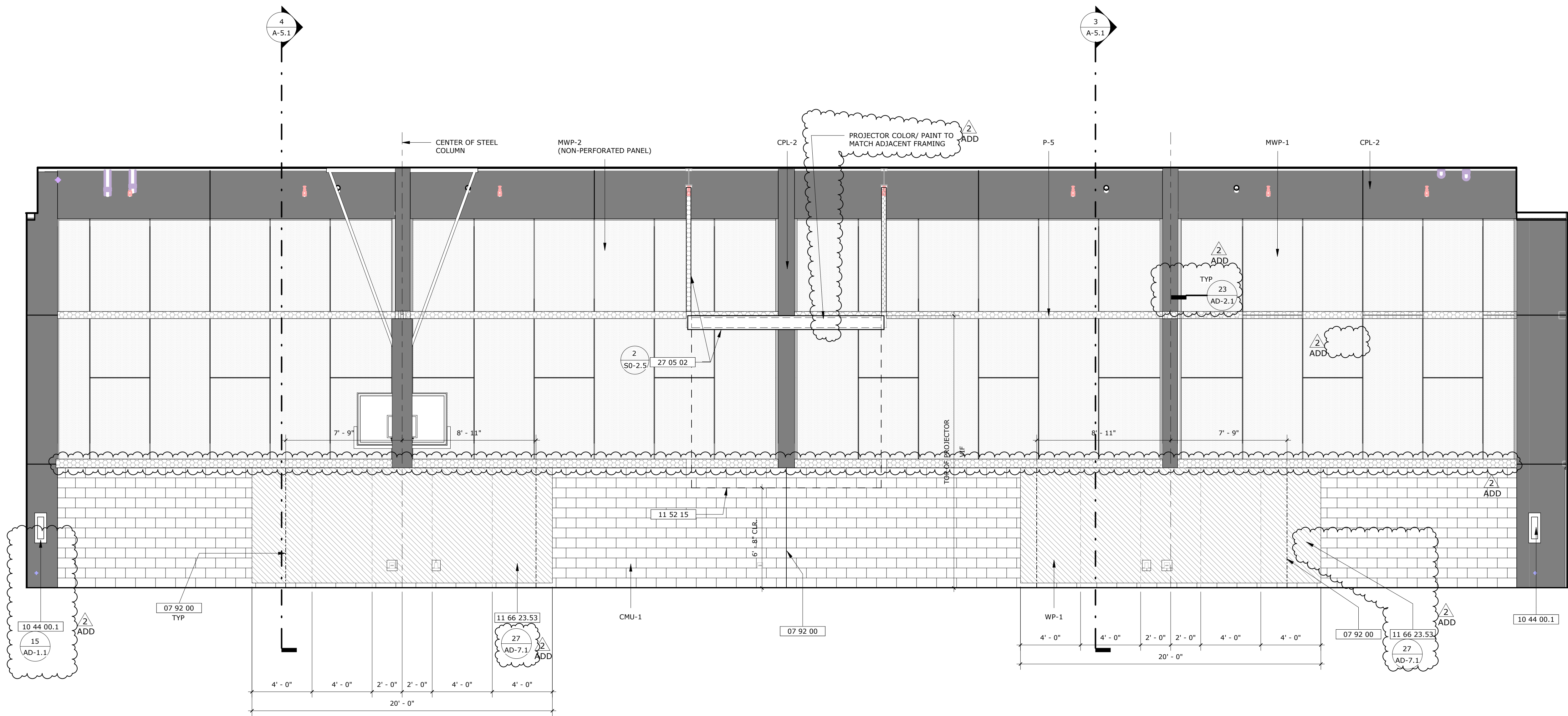
SCALE: 1/4" = 1'-0"

3

INTERIOR ELEVATIONS LEGEND

| | |
|--|--|
| | CONCRETE MASONRY UNIT WALL (CMU-1) SEE SPECIFICATION SECTION - 09 20 00 |
| | DECORATIVE PERFORATED PANELS (MWP-1) SEE SPECIFICATION SECTION - 05 75 13 |
| | DECORATIVE NON-PERFORATED PANELS (MWP-2) SEE SPECIFICATION SECTION - 05 75 13 |
| | CEMENT PLASTER (CPL-1) SEE SPECIFICATION SECTION - 09 24 00 |
| | CEMENT PLASTER (CPL-2) SEE SPECIFICATION SECTION - 09 24 00 |
| | HIGH PERFORMANCE COATINGS (P-4) SEE SPECIFICATION SECTION - 09 96 00 |
| | HIGH PERFORMANCE COATINGS (P-5) SEE SPECIFICATION SECTION - 09 96 00 |
| | WALL MATS (WP-1) SEE SPECIFICATION SECTION - 11 66 23 |

NOTE:
REFER TO COLORS, MATERIALS AND FINISHES LEGEND FOR ADDITIONAL INFORMATION



INTERIOR ELEVATION

SCALE: 1/4" = 1'-0"

4

PROJECT No. :1-15-112

5/30/2025 11:36:56 AM

DRAWN BY: _____
CHECKED BY: _____
DATE: _____
DATE: _____
DATE: _____
DATE: _____

ADD: _____
REV: _____
ADD: _____
REV: _____
ADD: _____
REV: _____

RUHNAUCLARKE.COM

3775 TENTH STREET, RIVERSIDE CALIFORNIA 92503 (951) 684-4664 / 5751 PALMER WAY, SUITE C, CARLSBAD CALIFORNIA 92010 (760) 438-5899

COLTON MIDDLE SCHOOL PAVILION
BUILDING ADDITION

670 W. LAUREL ST, COLTON, CA 92324
COLTON JOINT UNIFIED SCHOOL DISTRICT

INTERIOR ELEVATIONS

A-7.2

COLTON MIDDLE SCHOOL PAVILION BUILDING ADDITION: DSA BACKCHECK SET - 06/25/2024

