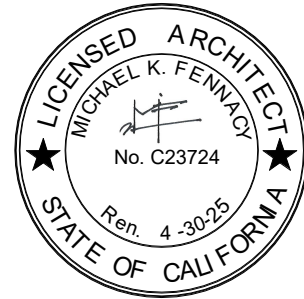


ADDENDUM NO. 7**DATE: 08/23/2023**DARDEN PROJECT NO.
DSA Application Number2180
02-120251**PROJECT:**Mission Oak HS Aquatic Complex
3442 E Bardsley Ave, Tulare, CA 93274
Bid No 2301**OWNER:**Tulare Joint Union High School District
426 N Blackstone St,
Tulare, CA 93274**ARCHITECT:**DARDEN ARCHITECTS, INC.
Attention: Fred Messias
6790 N. West Avenue
Fresno, California 93711
T. (559) 448-8051
F. (559) 446-1765**CONSTRUCTION MANAGER**CM Construction Services
Attention: Chris Hale
P.O. BOX 6237
Visalia, CA 93290
T. (559) 735-9556
M. (669) 804-6685**BID QUESTIONS**NON-MANDATORY JOB WALK
BID QUESTIONS, Submit By
BID OPENING DATE**Chris Hale**chris@cmconstructionservices.com08/08/2023 3:30 PM
08/22/2023 2:00 PM
08/31/2023 Before 2:00 PM

It will be the responsibility of the General Contractor to submit the information contained in this addendum to all its subcontractors and suppliers. Acknowledge receipt of this Addendum in the space provided on the Bid Form. Failure to do so may subject Bidder to disqualification.

The following additions, deletions, and revisions to the SHEETS and Project Manual are hereby made and do become a part of these Contract Documents.

GENERAL NOTE: ADDENDA NOS. 1 THRU 4 HAVE BEEN REMOVED FROM THIS PROJECT.

INDEX OF ADDENDA TRANSMITTED HEREWITH

ATTACHMENTS:

DOCUMENTS OR SPECIFICATIONS:

Full Size Drawings.....2 sheets
Job Walk Sign In Sheet 1 page

PROJECT MANUAL:

BIDDING AND CONTRACT REQUIREMENTS:

CHANGES TO THE BIDDING REQUIREMENTS

AD7-CBR01 Refer to the Bid Package:

1. This addendum item is the response to a Bid Question
2. Refer to 00 43 36 DESIGNATION OF SUBCONTRACTORS.
 - a. The phone number and subcontractor license numbers can be turned in after the bid opening, before 2:00 pm September 1, 2023.
3. Refer to 00 80 47 Roof Project Certificate.
 - a. The Roof Project Certificate can be turned in after the bid opening, within 24 hours of the bid opening.
4. The above document shall be emailed to Chris Hale at chris@cmconstructionservices.com.
5. Hard copies delivered to the district office will be acceptable, attention Vivian Hamilton.

TULARE JOINT UNION HIGH SCHOOL DISTRICT
426 N BLACKSTONE, TULARE, CA 93274

CHANGES TO PREVIOUS ADDENDUM:

AD7-CPA01 Refer to Addendum 6:

1. This addendum item is the response to a Bid Question
2. Omit the drawings **SD/A401** and **P/A402** from Addendum 6 and replace these sheets with the attached replacement sheets.
3. The Changes to these sheets are clouded.

SD/A401 – SITE OPENING SCHEDULE

- GENERAL NOTE #7 for the MISC. SPECIALTIES, Lock Box has been updated.

P/A402 – EXTERIOR ELEVATIONS P3-P4

- MISC. SPECIALTIES, AED device located at the North wall of Building P4.
- MISC. SPECIALTIES, Lock Box located on the East CMU wall by the main entrance.
- The CMU portion north of Building P4 was changed from 7-feet tall to 8-feet tall. All CMU fence walls shall be 8-feet minimum.

AD7-CPA02 Refer to Addendum 6, Drawing SD/L101

1. This addendum item is for a Bid Question regarding the CMU fence south of Building P4.
2. SD/L101 was updated to reflect the new site conditions, including the CMU fence.
3. SD/L101 comports with SD/A101.
4. In Addendum 6, the following note was included on this sheet.

NOTES

No Turf & Irrigation work in the scope of project.
Level and grade earth according to civil drawings in preparation for turf in area to the north.
All landscaping repair work performed by the School District.

AD7-CPA02 Refer to Addendum 6, Electrical Drawing X/E101

1. This addendum item is the response to a Bid Question.
2. Refer to the ELECTRICAL SYMBOLS SCHEDULE.
3. Refer to the Intrusion Symbols and add the following notes for the CCTV and PA systems.

Intrusion CCTV Notes

- A) The equipment will be furnished by the district and installed by the contractor.
 - B) Back-Boxes, Pathway, Cables and testing are all to be provided by the Contractor. The Contractor shall confirm that the back-boxes are compatible with the District equipment.
 - C) The District will provide the following Intrusion **CCTV equipment**.
 - *Avigilon Ava*
 - *360 degree cameras - Avigilon Ava Quad Black - 20 MP*
 - *90 degree cameras - Avigilon Ava Dome White - 4k*
 - *Bullet cameras - Avigilon Ava Bullet Wide White - 4k*
 - *Telescopic cameras - Avigilon Ava Bullet Tele White - 4k*
4. Refer to the PA/CLK/AV Symbols and add the following notes.

PA Notes

- A) The equipment will be furnished by the district and installed by the contractor.
- B) Back-Boxes, Pathway, Cables and testing are all to be provided by the Contractor. The Contractor shall confirm that the back-boxes are compatible with the District equipment.
- C) The District will provide the following **PA equipment**.
 - *Advanced Network Devices*
 - *Outside Speaker - IPSWS-SM-O*
 - *Indoor Speaker - IPSWS-SM*
 - *Indoor Speaker w/Clock - IPSWD-RWB*

SPECIFICATIONS:

CHANGES TO SPECIFICATIONS:

AD7-SP01 Refer to specification 10 05 00 MISCELLANEOUS SPECIALTIES.

1. This addendum item is the response to a Bid Question
2. Refer to Part 3, Schedules, Article 3.3, B Automated External Defibrillators (AEDs).
3. Strike out subparagraph 2 and replace it with the following.
 2. *Provide one (1) unit for the pool complex.*
 - a. *The location will be on the north wall of Building P4, mounted to the CMU wall by the backwash tank.*
 - b. *Center of cabinet handle to be located 46" maximum from the finish floor.*

AD7-SP02 Refer to specification 28 31 00 FIRE ALARM AND DETECTION.

1. This addendum item is the response to a Bid Question
2. Refer to Part 2, Products, Article 2.01.
3. Strike out Gamewell FCI and replace it with **Edwards EST 3**.

END OF ADDENDUM NO. 7

MISSION OAK HS BY TENNIS COURTS, PRE-BID MEETING
 TULARE JOINT UNION HIGH SCHOOL DISTRICT – MISSION OAK HS AQUATIC COMPLEX
 TUESDAY, AUGUST 8, 2023, AT 3:30 PM

BID QUESTIONS chris@cmconstructionservices.com
 NON-MANDATORY JOB WALK 8/8/2023 3:30 PM
 BID QUESTIONS, Submit By 8/22/2023 3:00 PM
 BID OPENING DATE 8/31/2023 Before 2:00 PM

COMPANY NAME	NAME(S)	PHONE NUMBER	Email
Darden Architects, Inc.	Mike Fennacy	(559) 448-8051	mikef@dardenarchitects.com
Darden Architects, Inc.	Fred Messias	(559) 448-8051	fredm@dardenarchitects.com
CM Construction Services	Chris Hale	(559) 804-6685	chris@cmconstructionservices.com
S.C. Anderson, inc	Jack Garcia Raymond Ramos	661-392-7000	estimating@scanderson.com
AMG A	David Silva Patty Crandall	661-251-7461	estimating@amgassociatesinc.com
Seals Construction	Christopher Mendoza	(559) 651-4010	Nick.Seals@SealsConstruction.com
BMY construction	Manuel Bustamante	559-243-4200	estimating@bmyinc.com
KATCH ENVIRONMENTAL	TOM CHACON	559 835 6675	ESTIMATING@KATCHENVIRONMENTAL.COM
SEALS CONSTRUCTION	NICK SEALS	559-651-4040	NICK.SEALS@SEALSCONSTRUCTION.COM
SC Anderson	Raymond Ramos	661 392-7000	RaymondRamos@Scanderson.com

Opening Schedule - Site												
Door No.	Frame Type	Size			Door Material	Hardware					Comments	
		Width	Height	Thickness		Head	Jamb	Threshold	Group	Keying Room No		
SG 01	OM-1	15' - 6"	8' - 0"	2"	ORNAMENTAL METAL	-	A10-SD/A404	E1-SD/A404	982OM	-	2	
SG 02	ACL-1	4' - 0"	6' - 0"	1 3/4"	CHAIN LINK	-	J11-SD/A402	A4-SD/A402	98G	-	3	
SG 03	OM-2	7' - 9"	8' - 0"	2"	ORNAMENTAL METAL	-	A4-SD/A404	E1-SD/A404	982OM	-	1	
SG 03a	CL-1	4' - 0"	6' - 0"	1 3/4"	CHAIN LINK	-	J11-SD/A402	A4-SD/A402	-	-	4	
SG 03b	CL-2	6' - 0"	6' - 0"	1 3/4"	CHAIN LINK	-	J11-SD/A402	A4-SD/A402	-	-	5	
SG 04	OM-1	15' - 6"	8' - 0"	2"	ORNAMENTAL METAL	-	A10-SD/A404	E1-SD/A404	982OM	-	2	
SG 05	OM-2	7' - 9"	8' - 0"	2"	ORNAMENTAL METAL	-	A4-SD/A404	E1-SD/A404	982OM	-	1	
SG 06	CL-2	8' - 0"	8' - 0"	1 3/4"	CL	-	J11-SD/A402	A4-SD/A402	998G	-		
SG 07	CL-2	12' - 0"	8' - 0"	1 3/4"	Chainlink	-	J11-SD/A402	A4-SD/A402	998G	-		

DSA File No.: 54-H11

DSA Application No.: 02-120251

Agency Approval

ABBREVIATIONS:

SG - Steel Gate	SS - Stainless Steel
STL - Steel	CL - Chain Link
HM - Hollow Metal	GALV - Galvanized Finish
SG - Site Gate	S&F - Steel and Fabrications
SPF - Steel Post Fence	OM - Ornamental Metal

GENERAL NOTES:

- This schedule is provided for the convenience of the General Contractor. Dimensions indicated are nominal dimensions.
- The General Contractor is responsible for all coordination and review of drawings and verifying all field conditions and dimensions prior to fabrication. Not all detail references are included in the schedule.
- All details, materials and finishes shall be considered typical for all similar conditions unless noted otherwise.
- Gate Types are shown on This Sheet.
- Frame Types are shown on This Sheet.
- Exit Doors shall be operable from inside without the use of a key or any special knowledge or effort.
- Method of Emergency Service Access
Provide one (1) MISCELLANEOUS SPECIALTIES Lock Box at the main entrance of the Aquatics Complex. Provide a means of access with a Master Key locked inside the Lock Box. The existing Lock Box at the Admin. Building G is to remain and is intended for access into the campus.

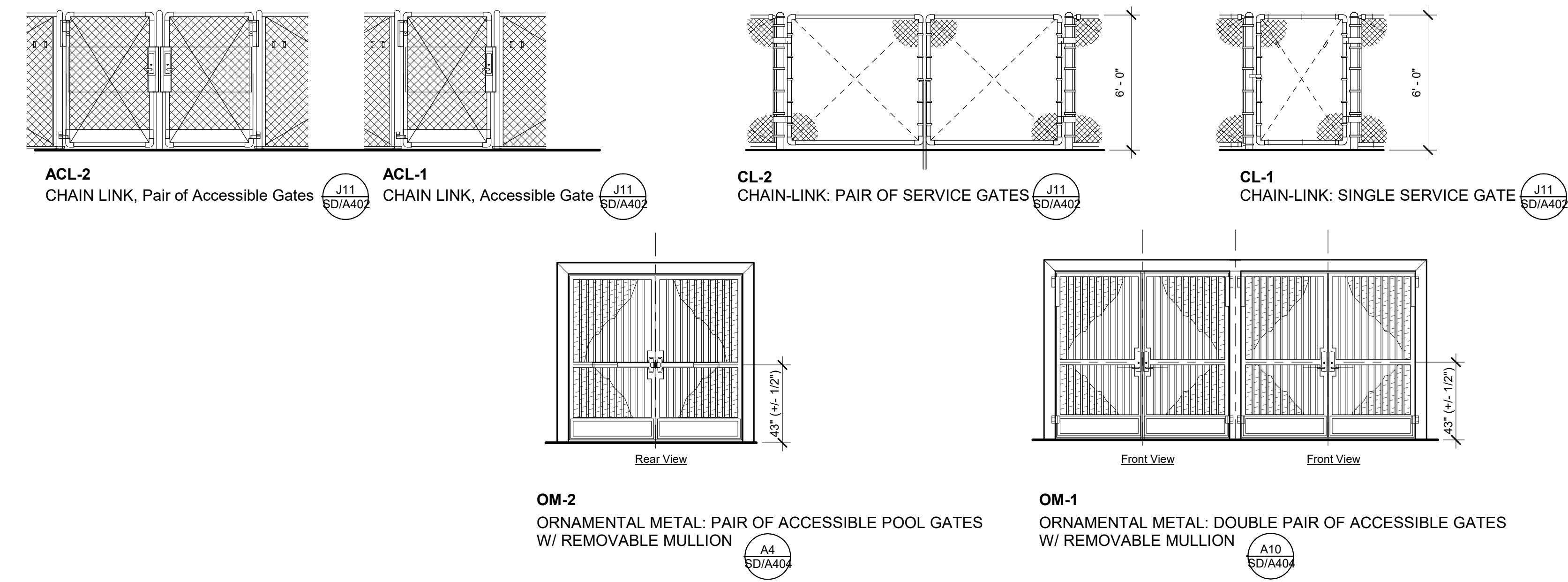
OPENING SCHEDULE COMMENTS:

- ORNAMENTAL METAL. Pair of accessible pool gates, with a set of door bumpers. See Details. N1
SD/A404
- ORNAMENTAL METAL. Two (2) pair of accessible pool gates, with a set of door bumpers and a fixed bollard / railing. See Details. N1
SD/A404 A7
SD/A404
- CHAIN LINK. Accessible Gate with Privacy Slats, and Door Stop / Holder. See J7
SD/A402
- CHAIN LINK. Maintenance gate with butterfly latch, padlock and Privacy Slats
- CHAIN LINK. Pair of maintenance gates with drop rod, butterfly latch, padlock and privacy slats
- ORNAMENTAL METAL. Pair of maintenance pool gates
- STEEL AND FABRICATIONS. Bus lane gates.

DSA REVIEW:

- "Open Mesh Fences", "Ornamental Metal Fencing", and "Solid Clad Fences" per California Administrative Code Sec. 4.314 are exempt from DSA review and not part of the DSA Structural Safety approval.
- DSA IR A-22, Item 12 "Open Mesh Fences", requires only DSA Access review and approval for gates and access.

J7 Opening Schedule Site Gates



J18 Opening Schedule Legend

No Scale

Mission Oak HS Aquatic Complex
Tulare Joint Union High School District
Tulare, CA 93274

SITE DEVELOPMENT
SITE OPENING SCHEDULE

darden architects ARCHITECTURE PLANNING INTERIORS
www.dardenarchitects.com
6790 N. West Ave. • Fresno, CA 93711 • T. 559.448.8051

Architect

No.	Revision/Submission	Date
1	REVISION 01	05/31/2023
2	ADDENDUM 7	8/23/2023

Revision

Designed By: MF Copyright 2022 Darden Architects

Scale: 1/4" = 1'-0" Drawn By: FM

Project Number: 2180 Checked By: -

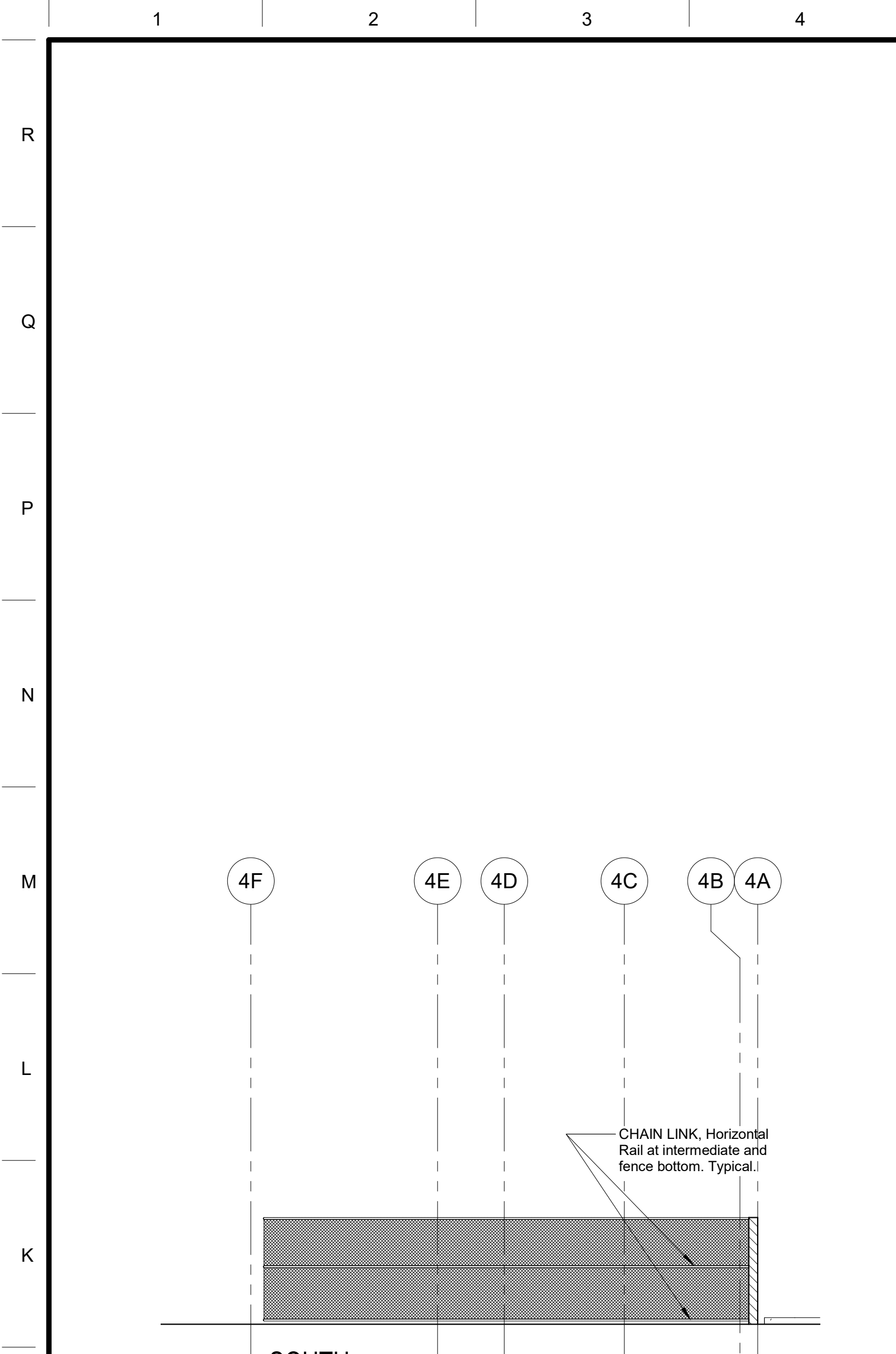
Date: 03/28/2023 Reviewed By: MF

SD/A401
AD7-AX01

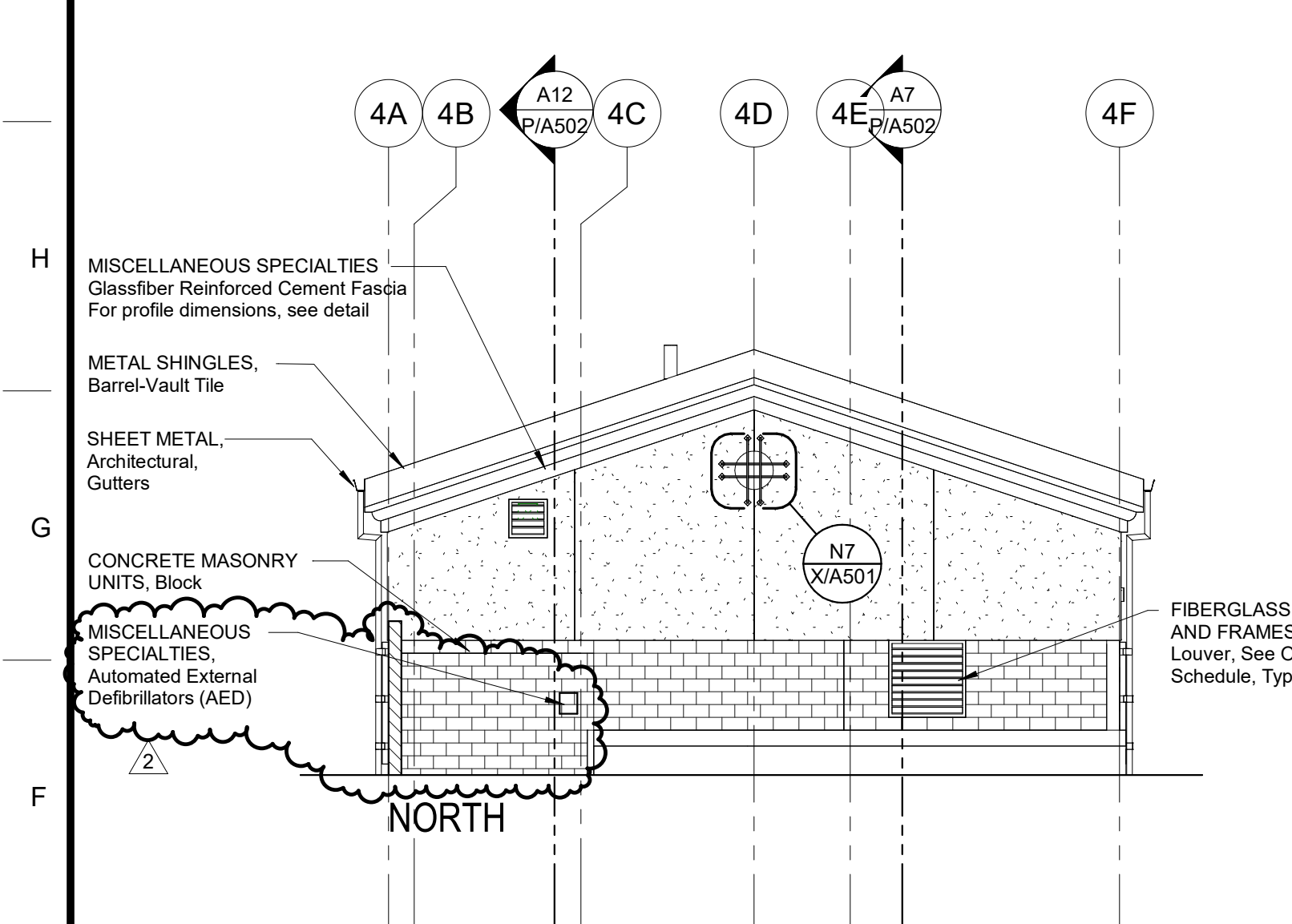
A7 SITE GATE OPENING TYPES

1/4" = 1'-0"

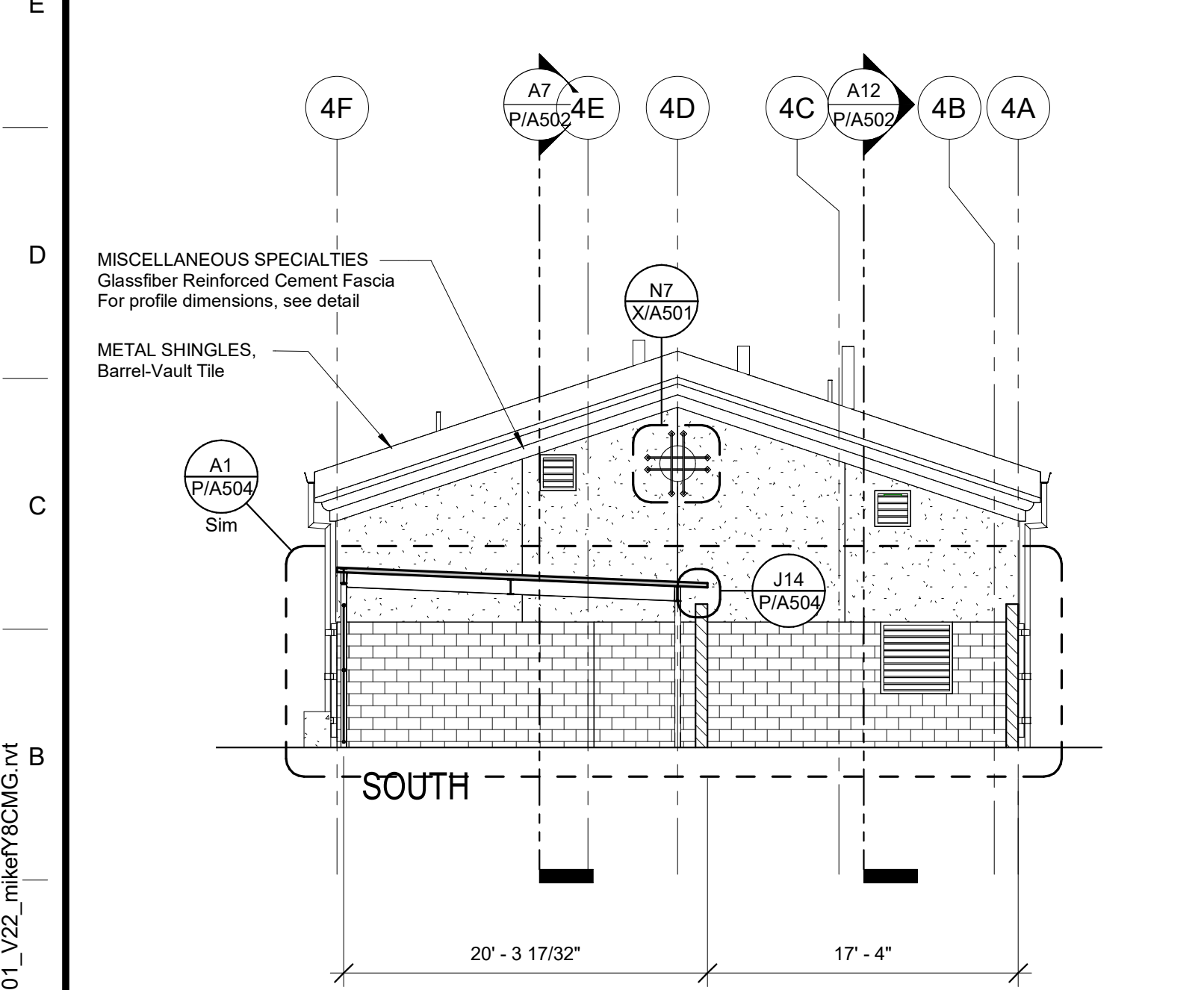
8/22/2023 8:56:22 AM C:\Users\mike\Dropbox\My PC (WS-065)\Documents\2180 Mission Oak HS Aquatic Complex_FDD1_V22_miker\9CMG.rvt



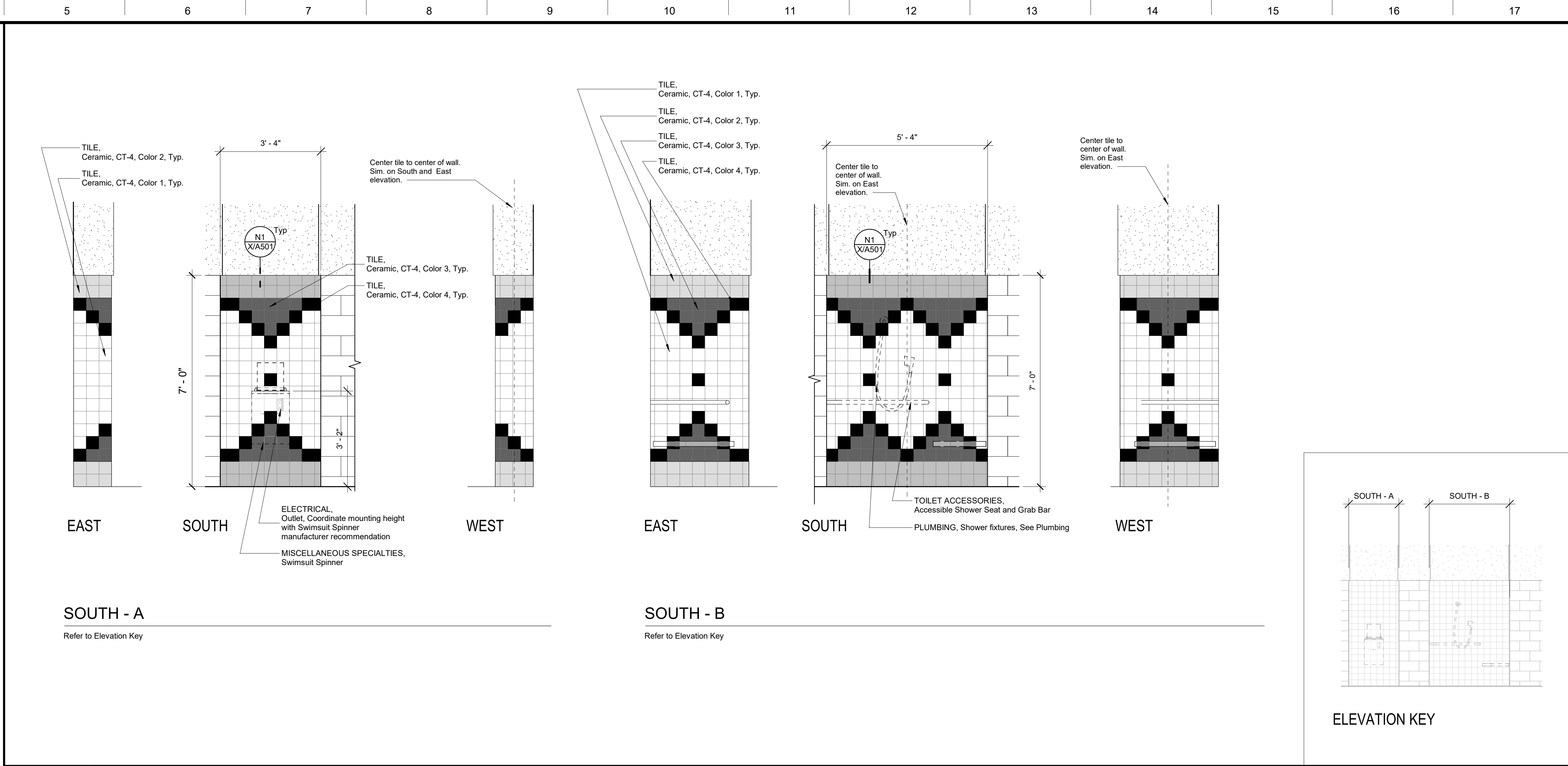
J5 Exterior Elevations - Building P3
1/2" = 1'-0"



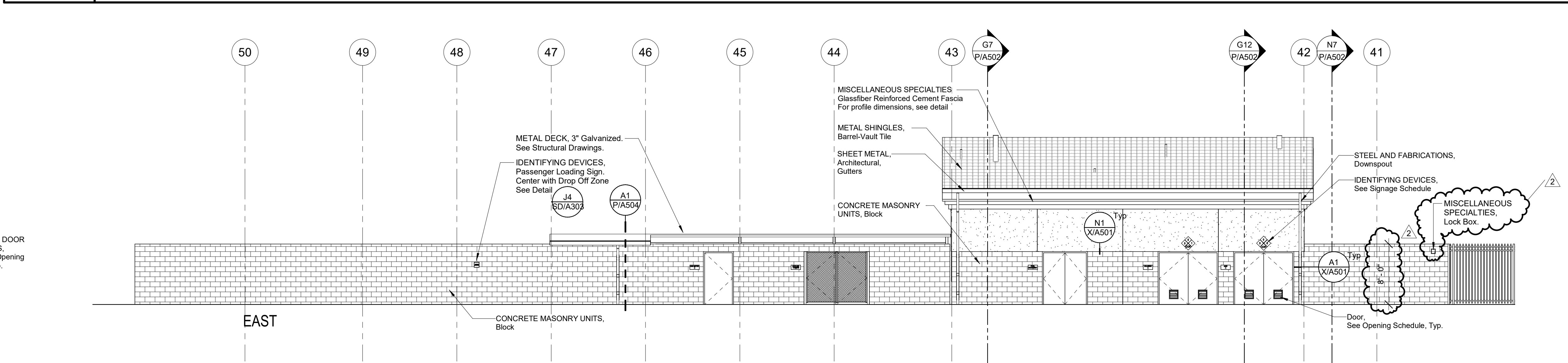
J5 Exterior Elevations - Building P3
1/2" = 1'-0"



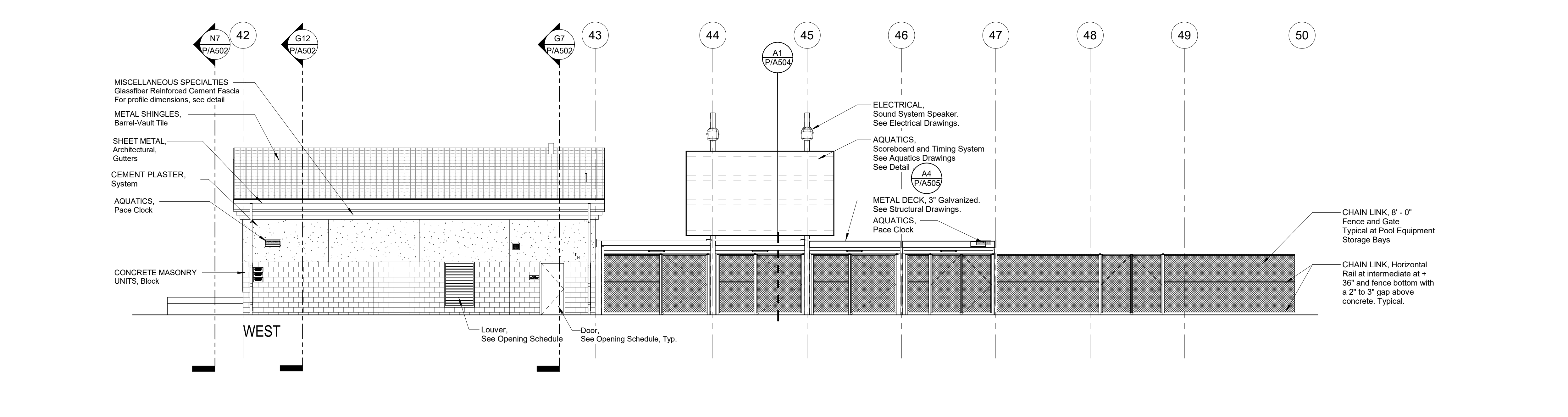
A1 Exterior Elevations
1/8" = 1'-0"



J5 Exterior Elevations - Building P3
1/2" = 1'-0"



J5 Exterior Elevations - Building P3
1/2" = 1'-0"



A1 Exterior Elevations
1/8" = 1'-0"

DSA File No.: 54-H11
 DSA Application No.: 02-120251
 Agency Approval

EXTERIOR COLOR LEGEND

Plaster Colors
 PC-1 White Unless Noted Otherwise

Block Colors
 BC-1 Natural Unless Noted Otherwise
 All Ground Block to be BC-1, UNO.

Metal Colors
 MC-1 White Unless Noted Otherwise

Door Colors
 All Doors to match adjacent Frame & Wall, UNO.

Tile Colors
 CT-4
 Color 1 - White Unless Noted Otherwise
 Color 2 - Grey
 Color 3 - Gold
 Color 4 - Orange Red

Color Notes

- XXX Color Designation.
- Parapet caps to match color of wall below, UNO.
- Soffits to match color of outer face wall, UNO.
- Horizontal soffits adjacent to fascia board shall be PC-1.

SYMBOLS

Electrical symbols: Horn, Speaker, Outlet, Light Fixture, PA Speaker, Glass.

ABBREVIATIONS

AFF Above Finished Floor
 BO Bottom of Control Joint
 CJ Control Joint
 DS Downspout
 EJ Expansion Joint
 HB PLUMBING, Hose Bibb.
 OH Opposite Hand
 Sim. Similar
 TO Top of
 TOM Top of Masonry
 TOP Top of Parapet Framing
 TOE Top of Framing
 TOR Top of Roof
 TOS Top of Steel
 TPL Top of Plate
 Typ. Typical
 UNO Unless Noted Otherwise

NOTES

- CEMENT PLASTER, Cement Plaster System, Accessories, Refer to Detail A14/XA501
- STEEL & FABRICATION, Downspout, Refer to Detail A1/XA501
- Refer to Specifications Section Appendix "C" Exterior Color Schedule.
- Refer to Exterior Finish Schedule on A1 / XIA201
- Refer to Structural for Curved Soffit Framing

J5 Exterior Elevations - Building P3
1/2" = 1'-0"

E18 Exterior Elevations Legend
 No Scale

Mission Oak HS Aquatic Complex
 Tulare Joint Union High School District
 Tulare, CA 93274 Project

BUILDING P3, P4
 EXTERIOR ELEVATIONS - P3 - P4 Drawing

ARCHITECTURE
 PLANNING
 INTERIORS
 darden architects www.dardenarchitects.com
 6790 N. West Ave. • Fresno, CA 93711 • T. 559.448.8051
 ARCHITECT

REVISION

No.	Revision/Submission	Date
1	REVISION 01	05/31/2023
2	ADDENDUM 7	8/23/2023

Scale: As indicated
 Project Number: 2180
 Date: 03/28/2023

Designed By: MF
 Drawn By: FM
 Checked By: -
 Reviewed By: MF

Copyright 2022 Darden Architects
 P/A402
 AD7-AX02

E18 Exterior Elevations Legend
No Scale

Mission Oak HS Aquatic Complex
 Tulare Joint Union High School District
 Tulare, CA 93274 Project

BUILDING P3, P4
 EXTERIOR ELEVATIONS - P3 - P4 Drawing

ARCHITECTURE
 PLANNING
 INTERIORS
 darden architects www.dardenarchitects.com
 6790 N. West Ave. • Fresno, CA 93711 • T. 559.448.8051
 ARCHITECT

REVISION

No.	Revision/Submission	Date
1	REVISION 01	05/31/2023
2	ADDENDUM 7	8/23/2023

Scale: As indicated
 Project Number: 2180
 Date: 03/28/2023

Designed By: MF
 Drawn By: FM
 Checked By: -
 Reviewed By: MF

Copyright 2022 Darden Architects
 P/A402
 AD7-AX02

8/22/2023 8:53:24 AM
 C:\Users\mike\Dropbox\My PC (WS-065)\Documents\2180 Mission Oak HS Aquatic Complex_RDD1_V22_mf\rf9c6mg.rvt