



150 s. arroyo parkway, suite no. 100
pasadena, california 91105
telephone 626.445.8580
facsimile 626.445.8081

**Alhambra Unified School District,
San Gabriel High School,
New Vehicle Maintenance Facility,
801, S Ramona Street,
Santa Gabriel, CA 91766**

**Mechanical Equipment Cut Sheets
14 August 2023**

**dHA + CALPEC
150 South Arroyo Parkway,
Pasadena, CA 91105**



COOK

SF-1.1 & SF-1.2 AND
EF-1.1 & EF-1.2



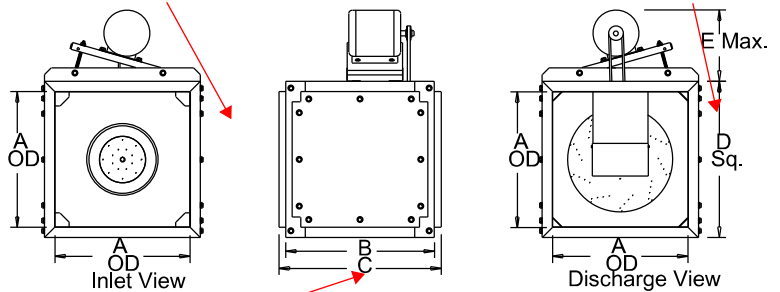
MARK: SF&EF 1.1,1.2
PROJECT: 19767 AUSD VMF
DATE: 12/19/2022

SQN-B

Centrifugal Square Inline Belt Drive

STANDARD CONSTRUCTION FEATURES:

All aluminum wheel - Galvanized steel housing - Three removable access doors - Closed cell neoprene gasketing - Inlet and discharge duct collars - Universal mounting feet - Regreasable bearings in a cast housing rated at 200,000 hours average life - Permanently lubricated ball bearing motor - Fixed pitch drives - Transit tested packaging.



E MAX CAN BE ON THE SIDE ALSO.

Performance (*Bhp includes 9% drive loss)

Qty	Catalog Number	Flow (CFM)	SP (inwc)	Fan RPM	Power* (HP)	FEG	FEI	Speed Control
1	225SQN-B	5300	.500	867	1.20	56	1.05	VSD

Altitude (ft): 450 Temperature (F): 70

Motor Information

HP	RPM	Volts/Ph/Hz	Enclosure	FLA	Mounted	VFD Rated
1-1/2	1725	460/3/60	ODP -PE	3	Yes	Yes

NEMA Premium® efficiency motor per MG-1 (2014) Table 12-12
FLA based on NEC (2017) Table 430.250

Sound Data Sound Power by Octave Band

	1	2	3	4	5	6	7	8	LwA	dBA	Sones
Inlet	72	79	78	74	73	69	62	54	77	66	13.5
Outlet	73	74	74	75	75	71	64	56	78	67	13.9

Accessories:

- Premium Efficiency Motor (Min. 86.5%)
- DRIVES (1.5 SF) @ 867 RPM, 56 HZ
- VSD 1.5 HP 380-480/3 FAN MOUNTED SPEED CTRL
- DISCONNECT NEMA 1 PRE-WIRED
- BD-30 DAMPER
- OSHA GUARD/MTR COVER
- INLET FLEX DUCT CONN
- OUTLET FLEX DUCT CON
- INSULATED HOUSING
- INLT PIEZOMETRIC RNG
- COOK FLOW MONITOR
- SC-245 SET(4) - ISOLATORS

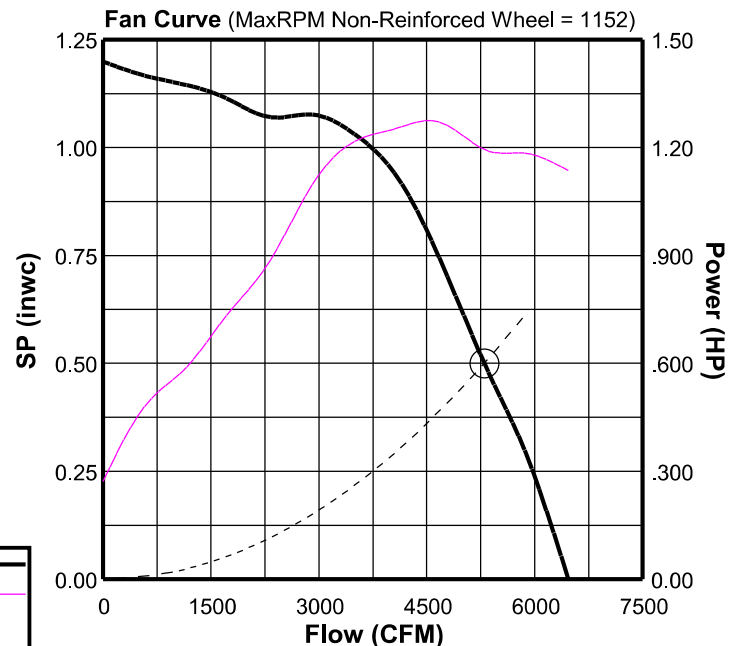
Dimensions (inches)

A	30
B	34-1/4
C	37-1/4
D	33-1/2
E	15-1/4

NOTE: Accessories may affect dimensions shown.

Weight(lbs)***	Shipping	455	Unit	321
----------------	----------	-----	------	-----

***Includes fan, motor & accessories.



Fan Curve Legend

CFM vs SP	—
CFM vs HP	—
Point of Operation	○
System Curve	---



COOK

SF-1.1 & SF-1.2 AND
EF-1.1 & EF-1.2

PROJECT: 19767 AUSD VMF
DATE: 12/19/2022

SimpliDrive

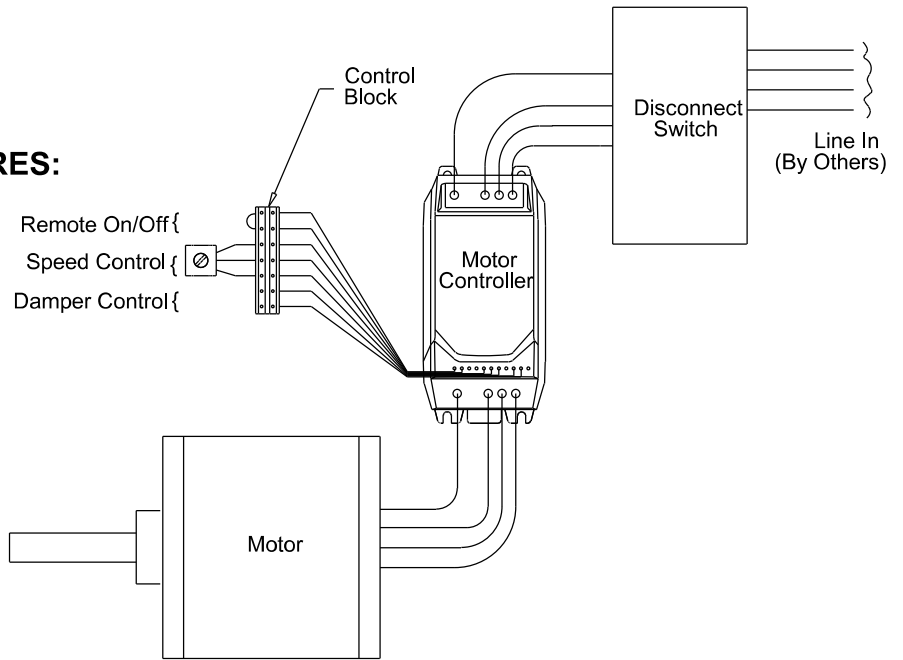
Vari-Flow® Motor Control Fan Mounted Speed Control

STANDARD CONSTRUCTION FEATURES:

- Factory Installed
- Pre-wired Motor and Disconnect
- Compatible with Vari-Flow Controllers
- IP20 Controller Enclosure
- Digital Display
- Single Point Control Connections
 - Remote On/Off
 - Analog 0-10VDC Speed Control
 - Damper Control
- Factory Programmed to Include
 - Motor Characteristics
 - Min/Max Speed
 - Motor Protection
 - Soft Start
 - Damper Control
- No Field Commissioning Required

Dimensions (inches)

Mark	Qty	Description
SF&EF 1.1,1.2	1	VSD 1.5 HP 380-480/3





COOK

SF-1.1 & SF-1.2 AND
EF-1.1 & EF-1.2

PROJECT: 19767 AUSD VMF
DATE: 12/19/2022

BD

Gravity Backdraft Damper

STANDARD CONSTRUCTION FEATURES:

- .020 Aluminum blades - .060 aluminum frame -
- Aluminum hinge pins - Nylon bushings.

Notes:

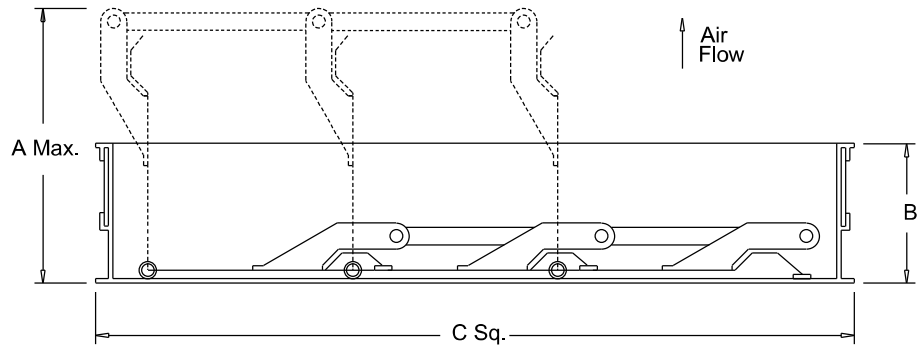
Max. operating temperature 200 Deg F (95 Deg C).

Max. discharge velocity 2000 fpm.

Sizes 36 thru 60 are shipped as 2 panels.

Sizes 66 and 78 are shipped as 6 panels.

These may require assembly.



Dimensions (inches)

Mark	Qty	Description	A Max.	B	C Sq.	# Panels
SF&EF 1.1,1.2	1	BD-30 DAMPER	5-3/16	1-7/8	29-3/4	1



COOK

PROJECT: 19767 AUSD VMF

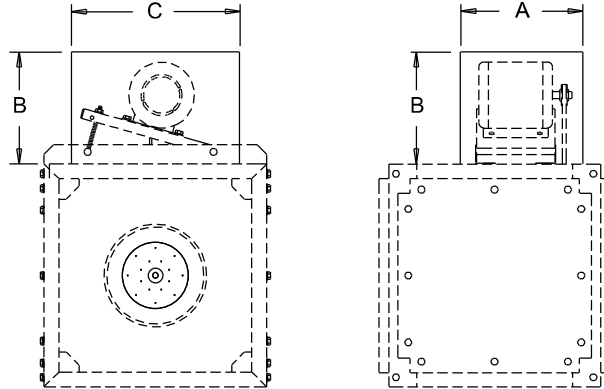
DATE: 12/19/2022

MOTOR COVER

SF-1.1 & SF-1.2 AND
EF-1.1 & EF-1.2

STANDARD CONSTRUCTION FEATURES:

18 ga. Galvanized steel - Meets OSHA requirements.



Dimensions (inches)

Mark	Qty	Description	A	B	C
SF&EF 1.1,1.2	1	OSHA GUARD/MTR COVER	32	24	30

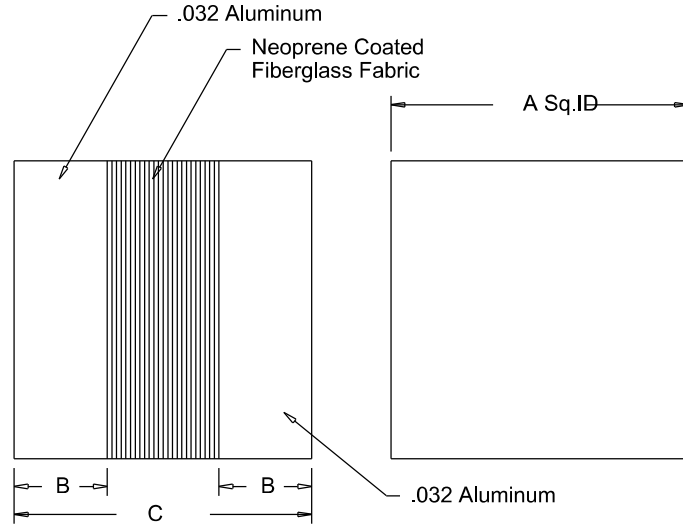


COOK

PROJECT: 19767 AUSD VMF
DATE: 12/19/2022

Flexible Inlet Connector

SF-1.1 & SF-1.2 AND
EF-1.1 & EF-1.2



Dimensions (inches)

Mark	Qty	Description	A Sq.	B	C Max.
SF&EF 1.1,1.2	1	INLET FLEX DUCT CONN	30-1/4	3	9

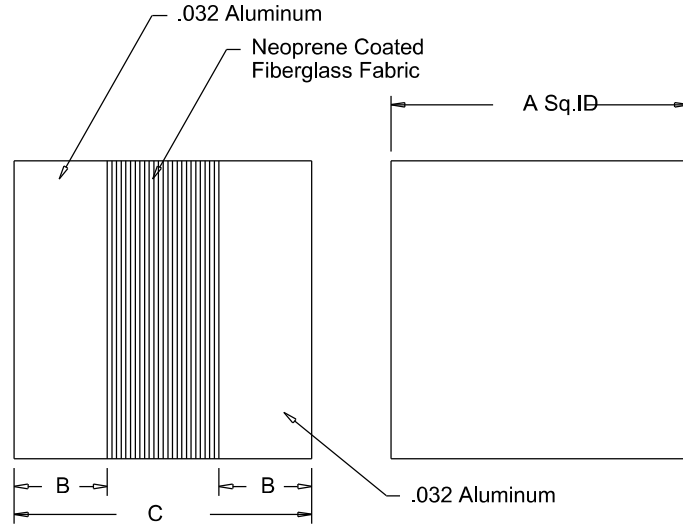


COOK

PROJECT: 19767 AUSD VMF

DATE: 12/19/2022

Flexible Outlet Connector SF-1.1 & SF-1.2 AND EF-1.1 & EF-1.2



Dimensions (inches)

Mark	Qty	Description	A Sq.	B	C Max.
SF&EF 1.1,1.2	1	OUTLET FLEX DUCT CON	30-1/4	3	9



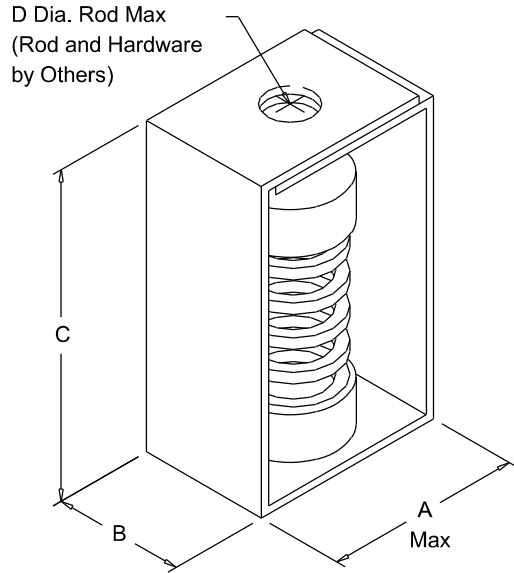
COOK

SF-1.1 & SF-1.2 AND
EF-1.1 & EF-1.2

PROJECT: 19767 AUSD VMF
DATE: 12/19/2022

SPRING CEILING

Housing Spring
Spring Isolator
Ceiling Mounted



Dimensions (inches)

Mark	Qty	Description	A	B	C	D Dia.	Rated Deflection
SF&EF 1.1,1.2	1	SC-245 SET(4)	3-11/16	2-1/4	5-1/4	5/8	1.19



COOK EF-1.3



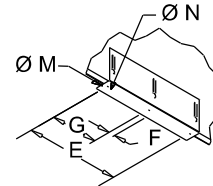
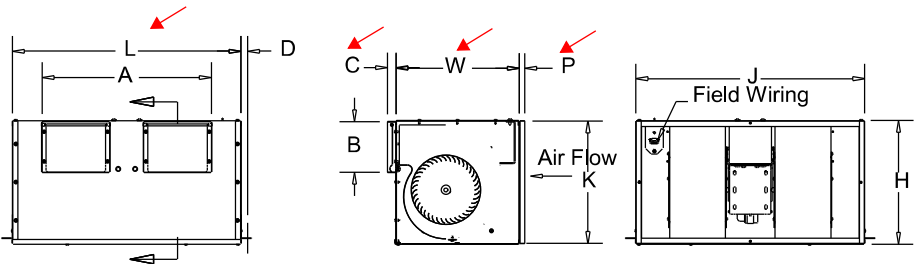
MARK: EF-1.3
PROJECT: 19767 AUSD VMF
DATE: 5/19/2023



GEMINI

Inline Blowers 800-900 Series

- STANDARD CONSTRUCTION FEATURES:**
 Twin forward curved galvanized steel fan wheels - Corrosion resistant galvanized steel fan housing - Acoustically insulated housing - Aluminum backdraft damper with solid aluminum hinge rod mounted in nylon bushings - Permanently lubricated motor with built-in thermal overload protection and disconnect plug - Interchangeable panels with removable fasteners allows the intake to be easily changed - Internal wiring box with disconnect receptacle.



Mounting Bracket Detail

Performance

Qty	Catalog Number	Flow (CFM)	SP (inwc)	Fan RPM	Input Watts	Speed Control
1	GN-960	1320	.500	1124	405	FSC

Altitude (ft): 450 Temperature (F): 70

Motor Information

Volts/Ph/Hz	Nameplate Amps
115/1/60	5.6

Sound Data Inlet Sound Power by Octave Band

1	2	3	4	5	6	7	8	LwA	dBA	Sones
73	73	71	67	62	56	56	53	69	57	7.0

Accessories:

- DISCONNECT NEMA 1 PRE-WIRED
- FAN SPEED CONTROLLER 10A 120V PREWIRE
- SC-35 SET(4) - ISOLATORS

Dimensions (inches)

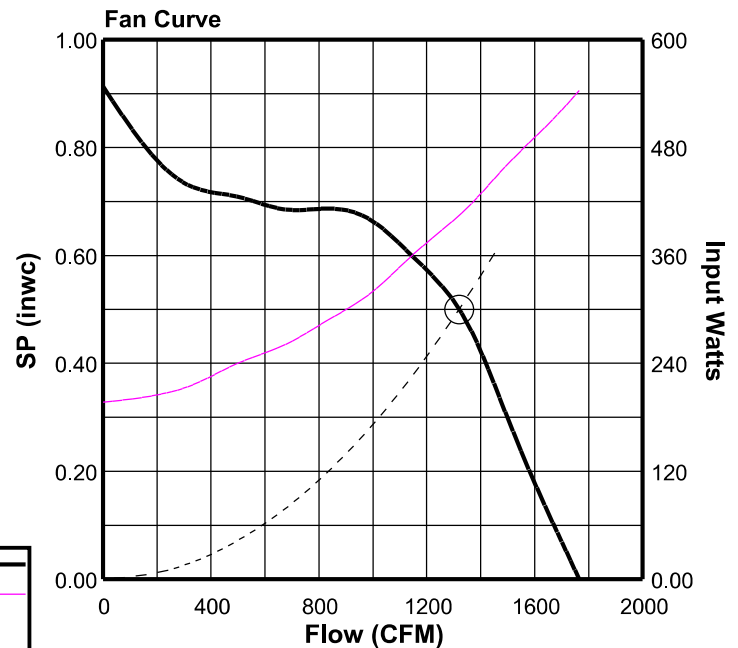
L-HSG	31
W-HSG	14-11/16
H-HSG	14-11/16
A-Outlet	24-1/4
B-Outlet	6
J-Inlet	31
K-Inlet	14-1/2
C	1
D	13/16
E	8

F	1/2
G	4
M	1/2
N	3/16
P	5/8

NOTE: Accessories may affect dimensions shown.

Weight(lbs)***	Shipping 91	Unit 83
-----------------------	--------------------	----------------

***Includes fan, motor & accessories.





FSC

Fan Speed Controls

STANDARD CONSTRUCTION FEATURES:

PRODUCT DESCRIPTION - Through the "Quadrac" integrated semi-conductor device it is now possible to offer this system with many advantages. Fewer semi-conductor parts mean greater reliability and the passivation process used in the manufacture of the semi-conductor insures long life.

Printed circuit construction eliminates wiring difficulties and guarantees workmanship.

All of these factors serve to offer the most important of all features - quality.

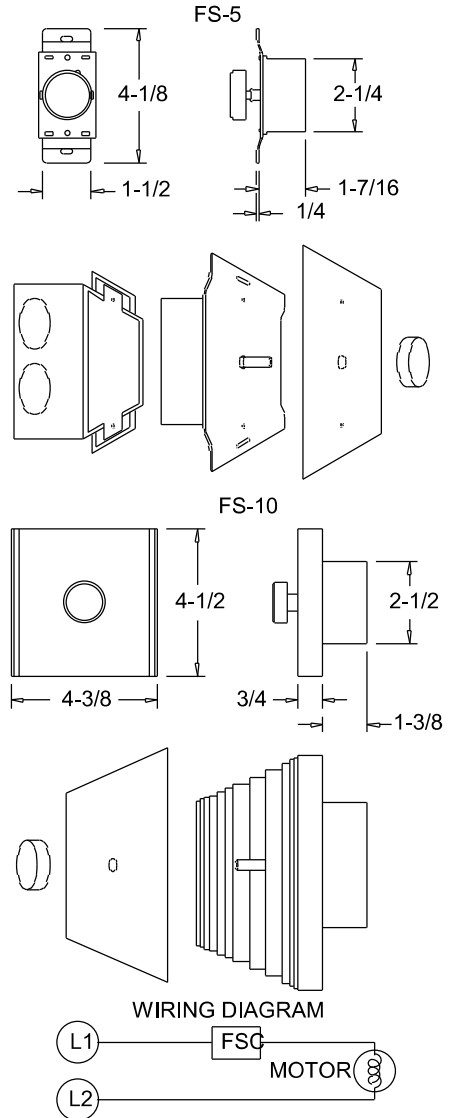
SPEED CONTROL - Positive Off/On action in the control dial. Speed range set to the customer's requirements. **CONTROL RATING** - 120 volts, 60 cycles, 1 phase. Maximum ambient temperature - 120 degree F (5 AMP, 10 AMP, 15 AMP). 220/240 volt, 50/60 cycles, 1 phase. Maximum ambient temperature - 120 degree F (5 AMP, 10 AMP). 220/240 volt model not UL listed. Fan cannot have UL listing if furnished with prewired 220/240 volt FSC. 277 volt, 60 cycles, 1 phase.

Maximum ambient temperature - 120 degree F (5 AMP). **WARNING** - Power must be turned off before installing this unit. **STANDARD INSTALLATION** - Fits any standard single gang box.

Turn off power and connect the two wires on the control to the two switch wires in the usual manner. The connection box is not supplied. **SPECIAL FEATURES** - Complete range control, solid state "Quadrac" integrated circuitry, solid state construction for long reliable operating life, saves on electric bills.

Dimensions (inches)

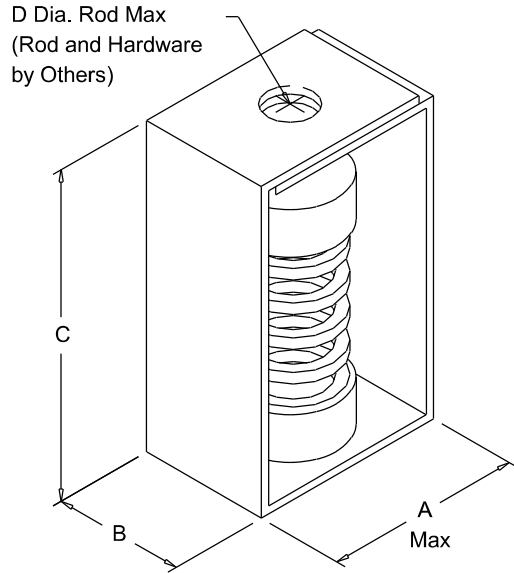
Mark	Qty	Description
EF-1.3	1	FSC 10A 120V PREWIRE





SPRING CEILING

Housing Spring
Spring Isolator
Ceiling Mounted



Dimensions (inches)

Mark	Qty	Description	A	B	C	D Dia.	Rated Deflection
EF-1.3	1	SC-35 SET(4)	2-5/32	1-1/2	3-15/32	1/2	1.03



COOK EF-1.4



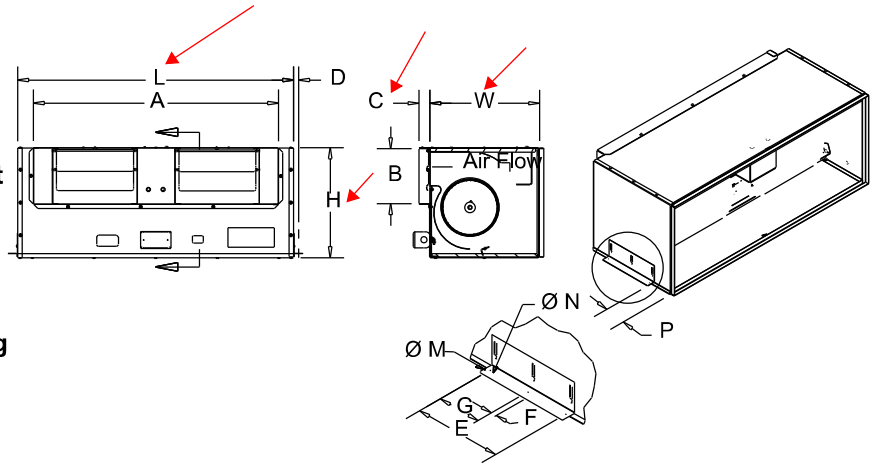
MARK: EF1.4
PROJECT: 19767 AUSD VMF
DATE: 5/25/2023

GEMINI

Inline Blowers 1000 & 2000 Series

STANDARD CONSTRUCTION FEATURES:

- Twin forward curved galvanized steel fan wheels -
- Corrosion resistant galvanized steel fan housing -
- Acoustically insulated housing - Aluminum backdraft damper with solid aluminum hinge rod mounted in nylon bushings -
- Permanently lubricated motor with built-in thermal overload protection -
- Interchangeable panels with removable fasteners allow the intake to be easily changed -
- Internal wiring box with disconnect receptacle.



Mounting Bracket Detail

Performance

Qty	Catalog Number	Flow (CFM)	SP (inwc)	Fan RPM	Power (HP)	Speed Control
1	GN1000/1ph	1500	.500	1013	.308	FSC

Altitude (ft): 450 Temperature (F): 70

Motor Information

HP	RPM	Volts/Ph/Hz	Nameplate Amps
1/2	1100	115/1/60	7.8

Sound Data Inlet Sound Power by Octave Band

1	2	3	4	5	6	7	8	LwA	dBA	Sones
64	66	67	60	55	50	44	37	63	51	4.5

Accessories:

- DISCONNECT NEMA 1 PRE-WIRED
- FAN SPEED CONTROLLER 10A 120V PREWIRE
- SC-35 SET(4) - ISOLATORS

Dimensions (inches)

L-HSG	38-1/8
W-HSG	15-1/4
H-HSG	15-1/4
A-Outlet	33-11/16
B-Outlet	7-11/16
C	1-1/2
D	13/16
E	8
F	1/2
G	4

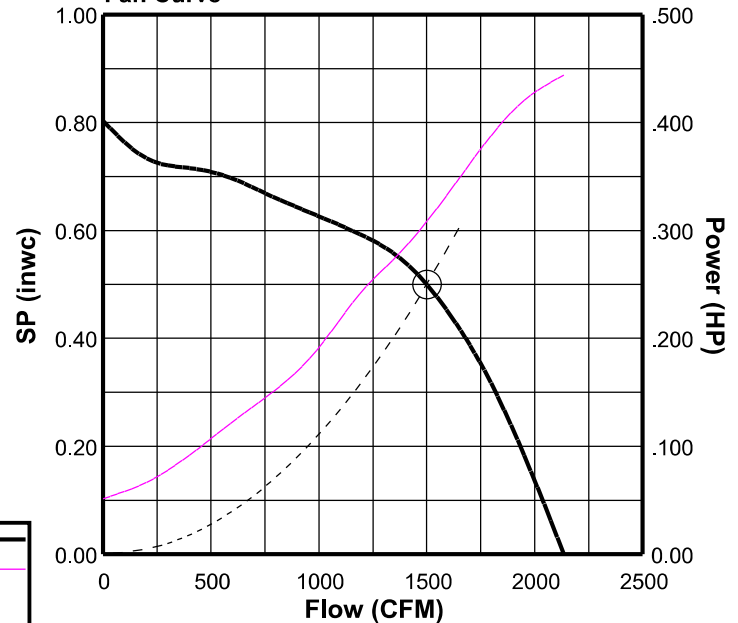
M	1/2
N	3/16
P	3-3/16

NOTE: Accessories may affect dimensions shown.

Weight(lbs)***	Shipping	126	Unit	96
----------------	----------	-----	------	----

***Includes fan, motor & accessories.

Fan Curve



Fan Curve Legend

CFM vs SP	—
CFM vs HP	—
Point of Operation	○
System Curve	----



FSC

Fan Speed Controls

STANDARD CONSTRUCTION FEATURES:

PRODUCT DESCRIPTION - Through the "Quadrac" integrated semi-conductor device it is now possible to offer this system with many advantages. Fewer semi-conductor parts mean greater reliability and the passivation process used in the manufacture of the semi-conductor insures long life.

Printed circuit construction eliminates wiring difficulties and guarantees workmanship.

All of these factors serve to offer the most important of all features - quality.

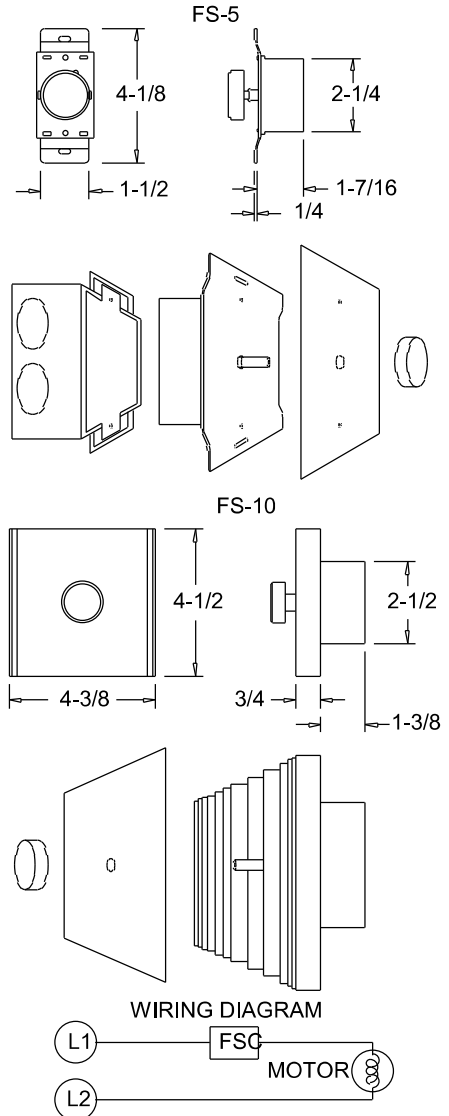
SPEED CONTROL - Positive Off/On action in the control dial. Speed range set to the customer's requirements. **CONTROL RATING** - 120 volts, 60 cycles, 1 phase. Maximum ambient temperature - 120 degree F (5 AMP, 10 AMP, 15 AMP). 220/240 volt, 50/60 cycles, 1 phase. Maximum ambient temperature - 120 degree F (5 AMP, 10 AMP). 220/240 volt model not UL listed. Fan cannot have UL listing if furnished with prewired 220/240 volt FSC. 277 volt, 60 cycles, 1 phase.

Maximum ambient temperature - 120 degree F (5 AMP). **WARNING** - Power must be turned off before installing this unit. **STANDARD INSTALLATION** - Fits any standard single gang box.

Turn off power and connect the two wires on the control to the two switch wires in the usual manner. The connection box is not supplied. **SPECIAL FEATURES** - Complete range control, solid state "Quadrac" integrated circuitry, solid state construction for long reliable operating life, saves on electric bills.

Dimensions (inches)

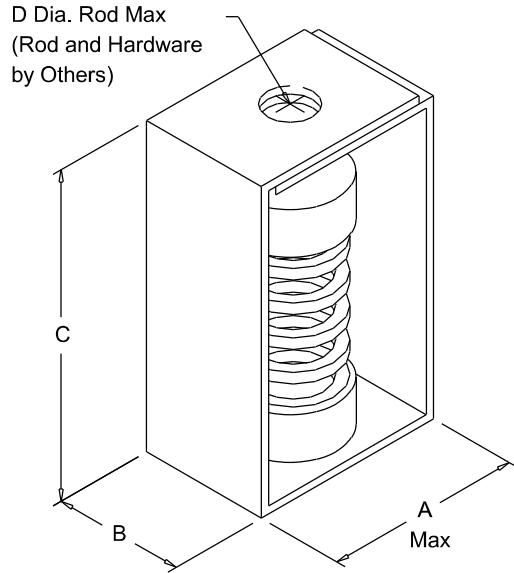
Mark	Qty	Description
EF1.4	1	FSC 10A 120V PREWIRE





SPRING CEILING

Housing Spring
Spring Isolator
Ceiling Mounted



Dimensions (inches)

Mark	Qty	Description	A	B	C	D Dia.	Rated Deflection
EF1.4	1	SC-35 SET(4)	2-5/32	1-1/2	3-15/32	1/2	1.03



COOK EF-1.5

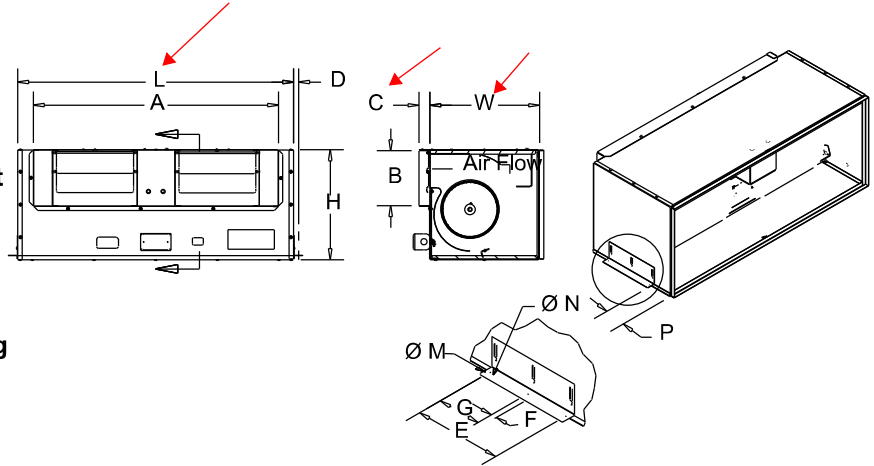


MARK: EF-1.5
PROJECT: 19767 AUSD VMF
DATE: 5/19/2023

GEMINI

Inline Blowers 1000 & 2000 Series

STANDARD CONSTRUCTION FEATURES:
 Twin forward curved galvanized steel fan wheels -
 Corrosion resistant galvanized steel fan housing -
 Acoustically insulated housing - Aluminum backdraft damper with solid aluminum hinge rod mounted in nylon bushings - Permanently lubricated motor with built-in thermal overload protection - Interchangeable panels with removable fasteners allow the intake to be easily changed - Internal wiring box with disconnect receptacle.



Mounting Bracket Detail

Performance

Qty	Catalog Number	Flow (CFM)	SP (inwc)	Fan RPM	Power (HP)	Speed Control
1	GN2000/1ph	2400	.500	1012	.575	FSC

Altitude (ft): 450 Temperature (F): 70

Motor Information

HP	RPM	Volts/Ph/Hz	Nameplate Amps
1	1140	115/1/60	10.6

Sound Data Inlet Sound Power by Octave Band

1	2	3	4	5	6	7	8	LwA	dBA	Sones
72	70	69	70	60	57	53	43	69	57	7.0

Accessories:

- DISCONNECT NEMA 1 PRE-WIRED
- FAN SPEED CONTROLLER 15 AMP 120 VOLT
- SC-35 SET(4) - ISOLATORS

Dimensions (inches)

L-HSG	45-7/16
W-HSG	16-5/8
H-HSG	16-5/8
A-Outlet	41-1/8
B-Outlet	9-5/8
C	1-1/2
D	13/16
E	8
F	1/2
G	4

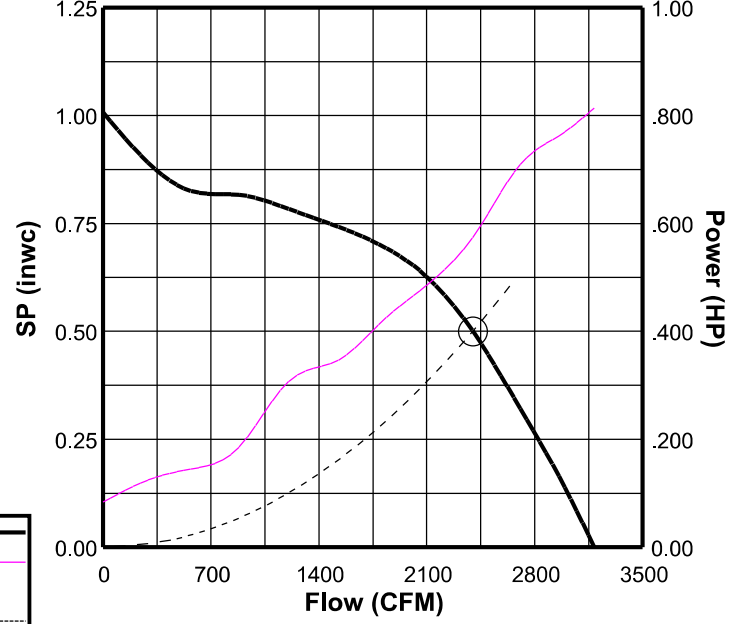
M	1/2
N	3/16
P	3-3/16

NOTE: Accessories may affect dimensions shown.

Weight(lbs)***	Shipping	171	Unit	131
----------------	----------	-----	------	-----

***Includes fan, motor & accessories.

Fan Curve



Fan Curve Legend	
CFM vs SP	—
CFM vs HP	—
Point of Operation	○
System Curve	----



FSC

Fan Speed Controls

STANDARD CONSTRUCTION FEATURES:

PRODUCT DESCRIPTION - Through the "Quadrac" integrated semi-conductor device it is now possible to offer this system with many advantages. Fewer semi-conductor parts mean greater reliability and the passivation process used in the manufacture of the semi-conductor insures long life.

Printed circuit construction eliminates wiring difficulties and guarantees workmanship.

All of these factors serve to offer the most important of all features - quality.

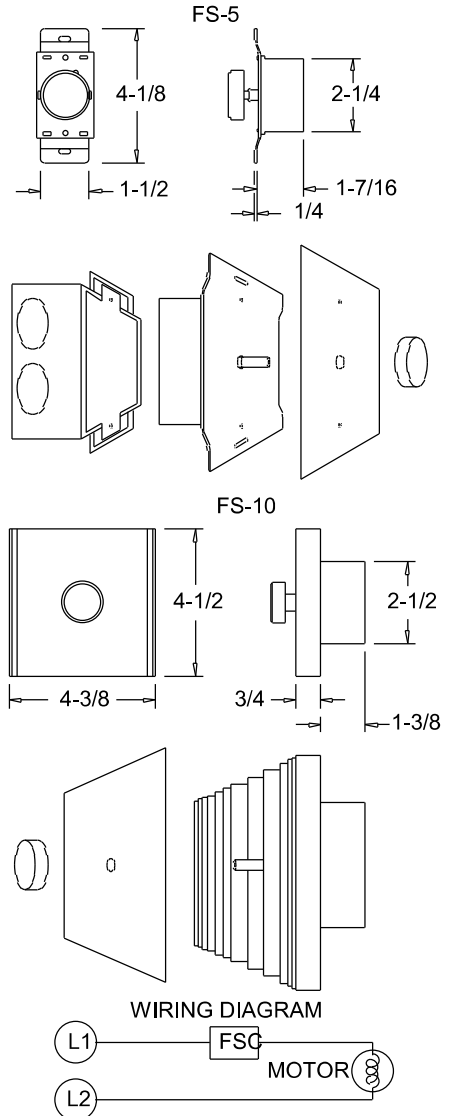
SPEED CONTROL - Positive Off/On action in the control dial. Speed range set to the customer's requirements. **CONTROL RATING** - 120 volts, 60 cycles, 1 phase. Maximum ambient temperature - 120 degree F (5 AMP, 10 AMP, 15 AMP). 220/240 volt, 50/60 cycles, 1 phase. Maximum ambient temperature - 120 degree F (5 AMP, 10 AMP). 220/240 volt model not UL listed. Fan cannot have UL listing if furnished with prewired 220/240 volt FSC. 277 volt, 60 cycles, 1 phase.

Maximum ambient temperature - 120 degree F (5 AMP). **WARNING** - Power must be turned off before installing this unit. **STANDARD INSTALLATION** - Fits any standard single gang box.

Turn off power and connect the two wires on the control to the two switch wires in the usual manner. The connection box is not supplied. **SPECIAL FEATURES** - Complete range control, solid state "Quadrac" integrated circuitry, solid state construction for long reliable operating life, saves on electric bills.

Dimensions (inches)

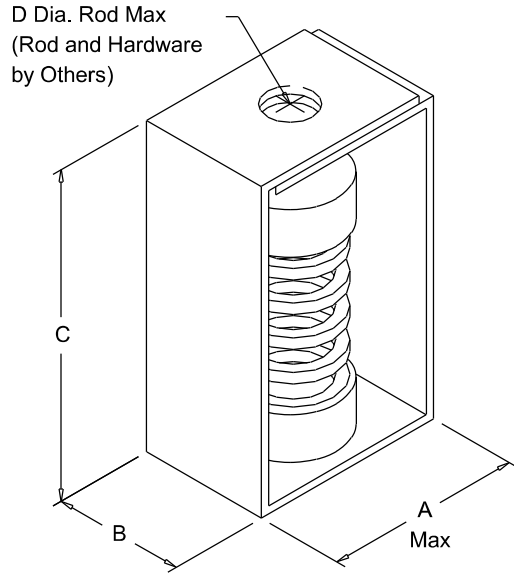
Mark	Qty	Description
EF-1.5	1	FSC 15 AMP 120 VOLT





SPRING CEILING

Housing Spring
Spring Isolator
Ceiling Mounted



Dimensions (inches)

Mark	Qty	Description	A	B	C	D Dia.	Rated Deflection
EF-1.5	1	SC-35 SET(4)	2-5/32	1-1/2	3-15/32	1/2	1.03



COOK (FUTURE) EF-1.6



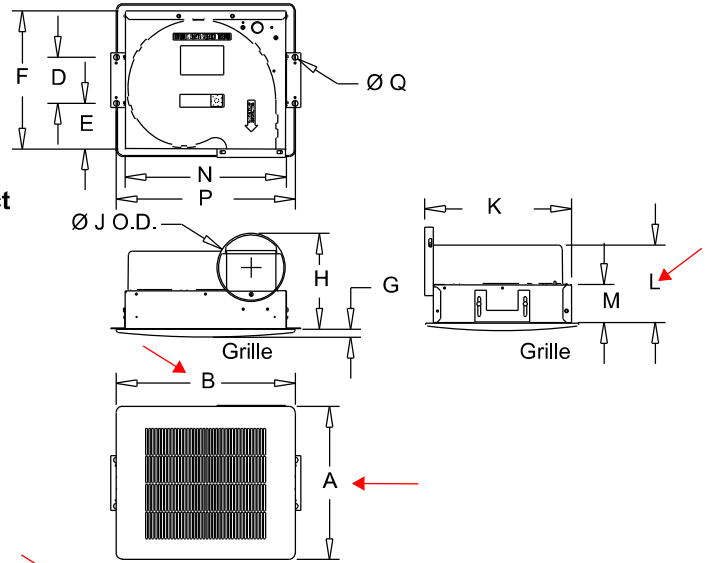
MARK: EF-1.5
PROJECT: 19767 AUSD VMF
DATE: 12/20/2022

GEMINI

Ceiling Fans 100 Series

STANDARD CONSTRUCTION FEATURES:

Forward curved injection molded polypropylene fan wheel - Injection molded flame resistant fan housing with round outlet duct - 22 ga. galvanized steel inlet box - Isolation mounted motor, mounted to one piece galvanized stamped steel integral motor mount/inlet - Permanently lubricated 2-speed motor with built-in thermal overload protection and disconnect plug - Field wiring compartment with receptacle - Adjustable prepunched mounting bracket - White, high impact styrene injection molded grille - Shipped in ISTA certified transit tested packaging.



Performance

Qty	Catalog Number	Flow (CFM)	SP (inwc)	Nominal RPM	Input Watts	Speed Control
1	GC-166	70	.500	897	35	FSC

Altitude (ft): 450 Temperature (F): 70

Motor Information

Volts/Ph/Hz	Nameplate Amps
115/1/60	.443

Sound Data Inlet Sound Power by Octave Band

1	2	3	4	5	6	7	8	LwA	dBA	Sones
51	53	55	49	46	41	37	32	52	40	2.0

Accessories:

- DISCONNECT NEMA 1 PRE-WIRED
- FAN SPEED CONTROLLER 5A 120V PREWIRED
- ROOF CAP-CRB W/BDSCR
- WHITE PLASTIC GRILLE
- INTEGRAL BD DAMPER
- SC-35 SET(4) - ISOLATORS

Dimensions (inches)

A Plastic	13-1/4	M	3-1/4
B Plastic	15-1/2	N	14
D	4	P	15-1/2
E	4	Q	1/2
F	12		
G	5/8		
H	8-3/8		
J O.D.	5-15/16		
K	12-3/4		
L	6-11/16		

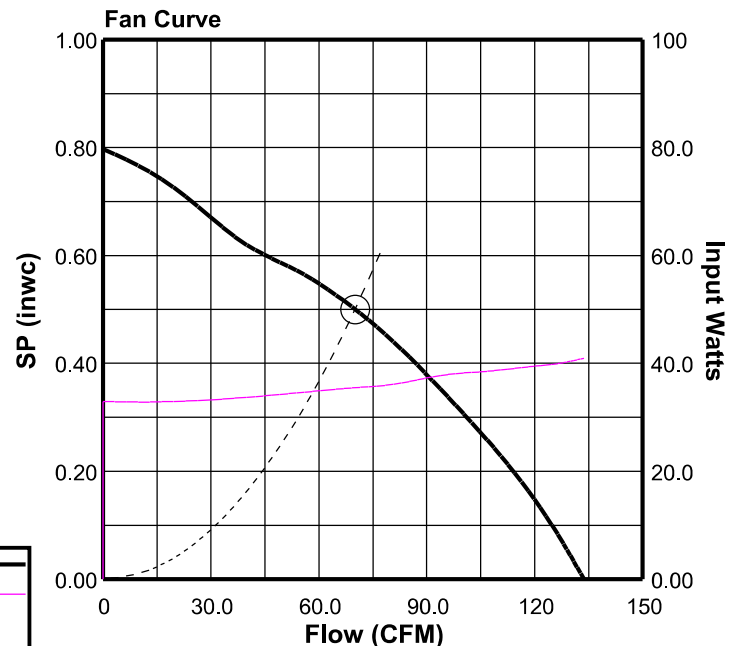
NOTE: Accessories may affect dimensions shown.

Weight(lbs)***	Shipping 40	Unit 37
-----------------------	--------------------	----------------

***Includes fan, motor & accessories.

Fan Curve Legend

CFM vs SP	—
CFM vs Watts	—
Point of Operation	○
System Curve	-----



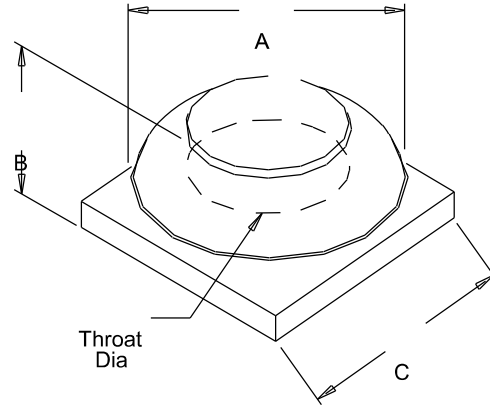


GEMINI

ROOF CAP Curb Mount

STANDARD CONSTRUCTION FEATURES:

Aluminum construction - Anti-backdraft flange
Optional birdscreen - PR8, PR12, PR16, and PR20 are curb mount.



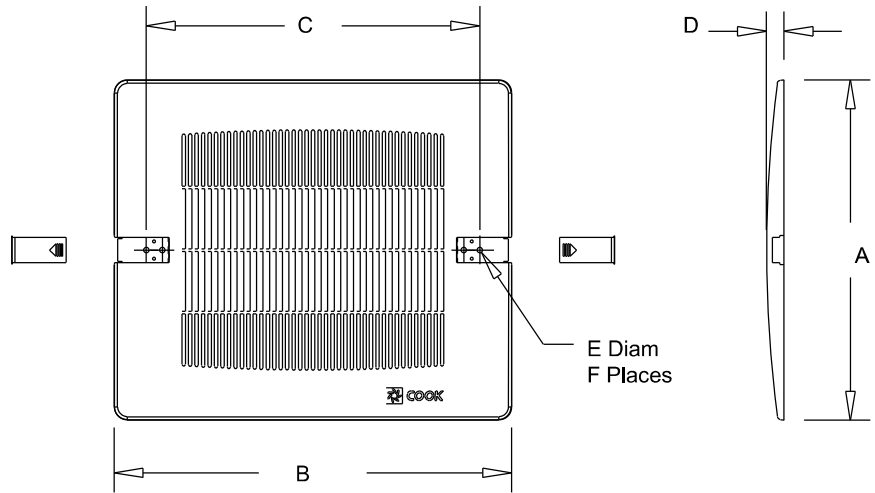
Dimensions (inches)

Mark	Qty	Description	A	B	C	Throat Dia.
EF-1.5	1	ROOF CAP-CRB W/BDSCR	18-1/4	10-1/8	18	8-19/32



GEMINI

PLASTIC GRILLE



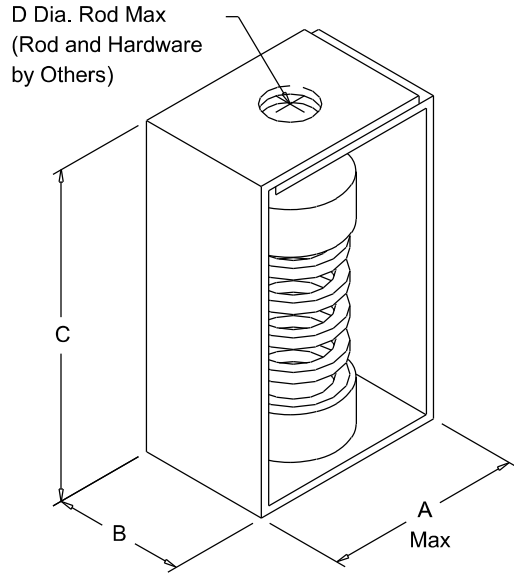
Dimensions (inches)

Mark	Qty	Description	A	B	C	D	E Diam	F Places
EF-1.5	1	WHITE PLASTIC GRILLE	13-1/4	15-1/2	13	1/4	1/4	4



SPRING CEILING

Housing Spring
Spring Isolator
Ceiling Mounted



Dimensions (inches)

Mark	Qty	Description	A	B	C	D Dia.	Rated Deflection
EF-1.5	1	SC-35 SET(4)	2-5/32	1-1/2	3-15/32	1/2	1.03



COOK (FUTURE) EF-1.7



MARK: EF-1.6
PROJECT: 19767 AUSD VMF
DATE: 12/20/2022

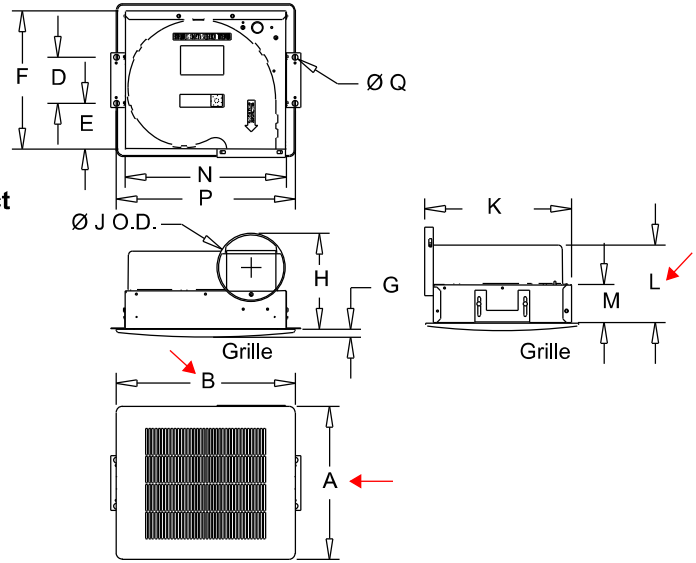


GEMINI

Ceiling Fans 100 Series

STANDARD CONSTRUCTION FEATURES:

Forward curved injection molded polypropylene fan wheel -
 Injection molded flame resistant fan housing with round outlet duct
 - 22 ga. galvanized steel inlet box - Isolation mounted motor,
 mounted to one piece galvanized stamped steel integral motor
 mount/inlet - Permanently lubricated 2-speed motor with built-in
 thermal overload protection and disconnect plug - Field wiring
 compartment with receptacle - Adjustable prepunched mounting
 bracket - White, high impact styrene injection molded grille -
 Shipped in ISTA certified transit tested packaging.



Performance

Qty	Catalog Number	Flow (CFM)	SP (inwc)	Nominal RPM	Input Watts	Speed Control
1	GC-186	140	.500	907	69	FSC

Altitude (ft): 450 Temperature (F): 70

Motor Information

Volts/Ph/Hz	Nameplate Amps
115/1/60	.817

Sound Data Inlet Sound Power by Octave Band

1	2	3	4	5	6	7	8	LwA	dBA	Sones
55	58	60	55	52	47	44	40	58	46	3.0

Accessories:

- DISCONNECT NEMA 1 PRE-WIRED
- WHITE PLASTIC GRILLE
- ROOF CAP-CRB W/BDSCR
- FAN SPEED CONTROLLER 5A 120V PREWIRED
- INTEGRAL BD DAMPER
- SC-35 SET(4) - ISOLATORS

Dimensions (inches)

A Plastic	13-1/4
B Plastic	15-1/2
D	4
E	4
F	12
G	5/8
H	8-3/8
J O.D.	5-15/16
K	12-3/4
L	6-11/16
M	3-1/4
N	14
P	15-1/2
Q	1/2

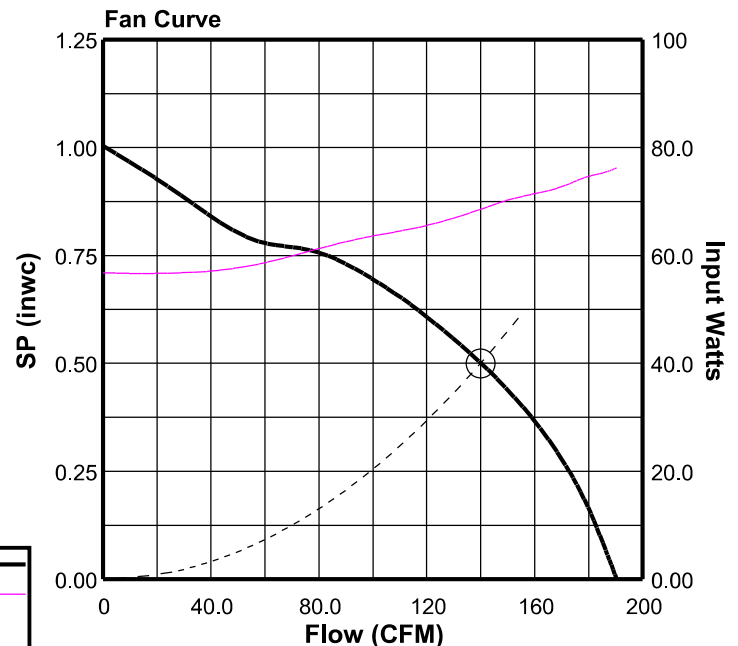
NOTE: Accessories may affect dimensions shown.

Weight(lbs)***	Shipping 41	Unit 38
-----------------------	--------------------	----------------

***Includes fan, motor & accessories.

Fan Curve Legend

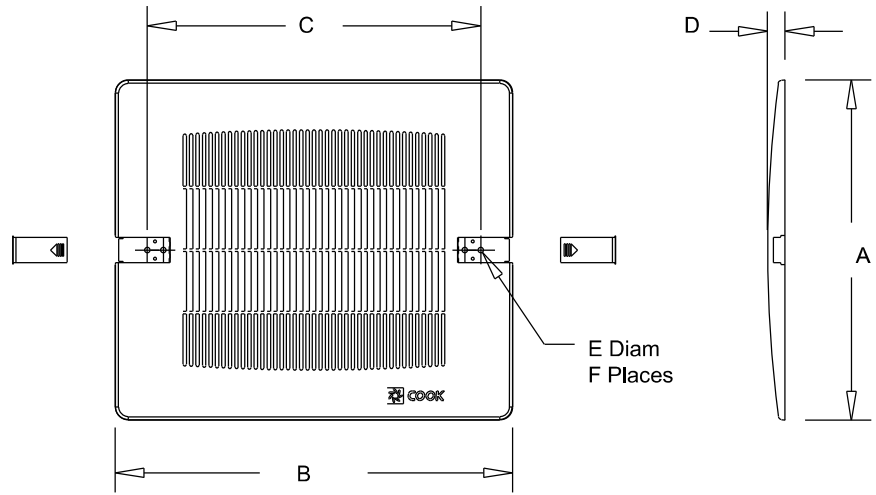
CFM vs SP	—
CFM vs Watts	—
Point of Operation	○
System Curve	-----





GEMINI

PLASTIC GRILLE



Dimensions (inches)

Mark	Qty	Description	A	B	C	D	E Diam	F Places
EF-1.6	1	WHITE PLASTIC GRILLE	13-1/4	15-1/2	13	1/4	1/4	4

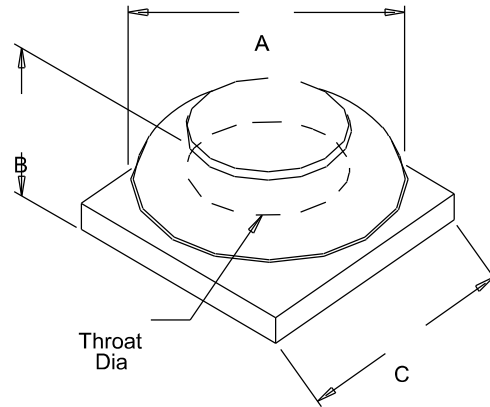


GEMINI

ROOF CAP Curb Mount

STANDARD CONSTRUCTION FEATURES:

Aluminum construction - Anti-backdraft flange
Optional birdscreen - PR8, PR12, PR16, and PR20 are curb mount.



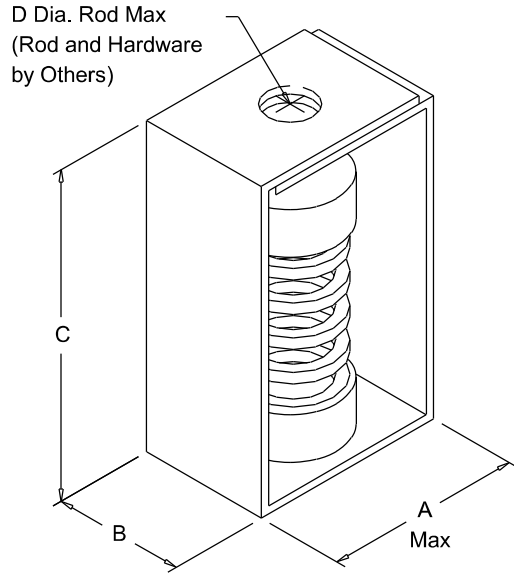
Dimensions (inches)

Mark	Qty	Description	A	B	C	Throat Dia.
EF-1.6	1	ROOF CAP-CRB W/BDSCR	18-1/4	10-1/8	18	8-19/32



SPRING CEILING

Housing Spring
Spring Isolator
Ceiling Mounted



Dimensions (inches)

Mark	Qty	Description	A	B	C	D Dia.	Rated Deflection
EF-1.6	1	SC-35 SET(4)	2-5/32	1-1/2	3-15/32	1/2	1.03



Specification:
 Motor Driven HR
 9000-W-TMTR (Tube Type)

TECHNICAL INFORMATION

In the interest of continuing product improvement, we reserve the right to change models, specifications, and/or features without prejudice.

PROJECT: _____
 LOCATION: **HRFD-1.1 & VEF-1.1,** _____
 ARCHITECT: **HRFD-1.2 & VEF-1.2 AND** _____
 ENGINEER: **HRFD-1.3 & VEF-1.3** _____
 CONTRACTOR: _____
 DATE: _____ SALES ENGINEER: _____

www.monoxivent.com

info@monoxivent.com

309-794-1000

Page: **HRMO-1**

MOTOR DRIVEN HOSE REEL SPECIFICATION SERIES 9000-W-TMTR (Tube Type, Chain Driven)

The vehicle exhaust extraction system shall consist of a hose reel with a single phase UL approved, totally enclosed, 120 V, 60 hz, 3.8 AMP, 430 Watt Motor, Limit Switches, and Chain Drive mechanism. Motor and drum rotate at 14-RPM.

SEE MOTOR FEATURES AND SPECIFICATIONS.

Motor to be operated by a spring rocker switch. Rocker switch to be either mounted on the wall, column, or switch may be wired directly to the hose reel and power cord dropped from the reel with the rocker switch mounted in box. Strain relief fittings to be used at both the box and junction on hose reel.

The hose reel shall consist of the following features:

The hose reel side mounting support frame shall be constructed of 11-gauge cold rolled steel. The side plates shall be drawn securely together by two heavy gauge "J" channel steel support braces. Each side plate has two pre-drilled 9/16" diameter holes for mounting of the hose reel.

The hose drum shall be constructed of 16-gauge cold rolled steel. The drum shall be formed and rolled to an 18" diameter and strengthened by four inner support bars. These bars are secured to the drum end flanges and pull the drum tightly against the end flange.

The drum end flanges shall be constructed of 16-gauge cold rolled steel. The end flange outer edge shall be rolled to provide strength and rigidity. Each end flange shall have a center pressed 18" diameter groove. This groove allows the reel drum and end flange to mate so the drum is always centered in relationship to the end flange. The drum's inner support bars draw the end flange securely to the drum for added strength, quality, and reliability.

The hose reel shall have a hose to drum connection fitting allowing for use of either 4", 5", 6", or 8" hose. The connection fitting supports an inner 6" or 8" diameter tube that completes the connection from the extraction hose to the side discharge connection fittings. The side discharge fitting is a complete bearing fitting and allows for the connection of the 6" or 8" diameter discharge duct.

The hose reel drum shall also be supplied with a hose tracking guide bar to guide the hose during recoiling function.

The entire hose reel shall be protected by P&L Virtralon polyester powder coating for longevity and to resist corrosion.

**TECHNICAL
INFORMATION**

In the interest of continuing product improvement,
we reserve the right to change models,
specifications, and/or features without prejudice.

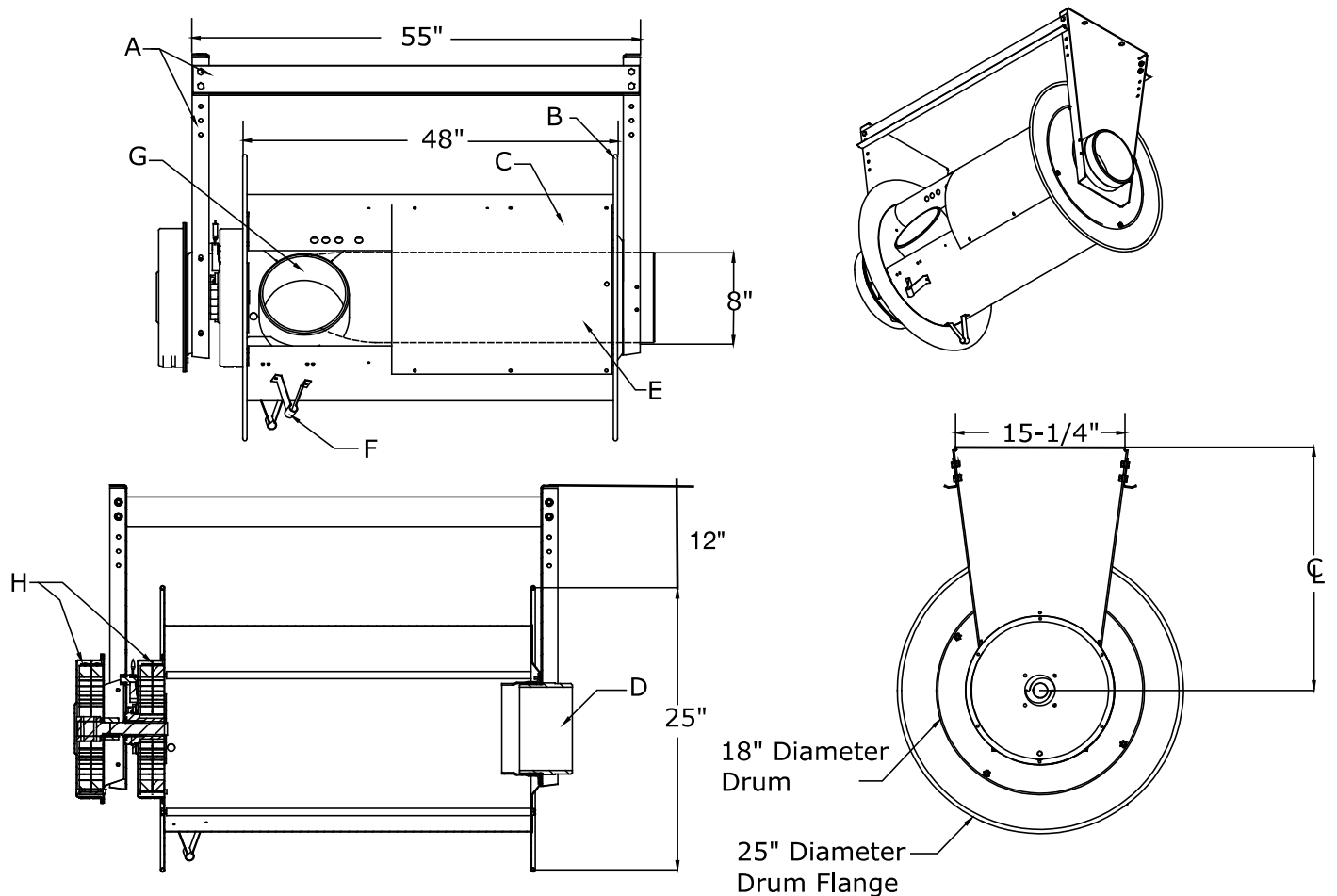
PROJECT: _____
LOCATION: **HRFD-1.1 & VEF-1.1,** _____
ARCHITECT: **HRFD-1.2 & VEF-1.2 AND** _____
ENGINEER: **HRFD-1.3 & VEF-1.3** _____
CONTRACTOR: _____
DATE: _____ SALES ENGINEER: _____

www.monoxivent.com

info@monoxivent.com

309-794-1000

Page: HRSO-14



**SERIES
9000-L**

L Series Spring Operated Hose Reel

Component Listing:

- A. Heavy gauge steel support mounting frame
- B. End flange
- C. Drum assembly, 18" diameter
- D. Duct connection fitting & bearing assembly
- E. Internal hose tube, 8" diameter
- F. Hose tracking bar
- G. Hose to drum connector - 8" diameter
- H. Dual spring cassettes

I. Junction box for VEF Control Box/Electrical Panel and P4 Switch Power Cord

Drum storage capacity for Series 9000-L:

8" Diameter Hose: Up to 44' Hose Length (9000-L with 48" Drum)

**HRFD-1.1, 1.2 & 1.3:
55"LX25"W X37"H.
OP. WT. 350 LBS.**



*Drum capacity is listed for information only. This does not reflect the length of hose supplied on the hose reel.
Note - the above hose length is for industry standard. Hose reels can be supplied with longer lengths of hose
- please consult factory*

Provided With: 6" Diameter 44 Feet/Hose 4000 Series Hose



Series 4000 High-Temperature Exhaust Extraction Hose

TECHNICAL INFORMATION

In the interest of continuing product improvement, we reserve the right to change models, specifications, and/or features without prejudice.

PROJECT: _____
 LOCATION: **HRFD-1.1 & VEF-1.1,**
 ARCHITECT: **HRFD-1.2 & VEF-1.2 AND**
 ENGINEER: **HRFD-1.3 & VEF-1.3**
 CONTRACTOR: _____
 DATE: _____ SALES ENGINEER: _____

www.monoxivent.com

info@monoxivent.com

309-794-1000

Page: HS-4

CONSTRUCTION: SILICONE/NOMEX

NOTE - The Series 4000 extraction hose is used for both overhead hose reels and conventional overhead systems.

Exhaust extraction hose is a double ply hose with an inner liner ply of woven fiberglass coated silicone rubber. A helically wound spring steel wire is imbedded between the inner liner ply and an exterior ply of woven Nomex coated with silicone rubber. The wire insures maximum flexibility and minimum diameter restrictions in sharp bend areas. The assembly is double wound with a treated Nomex cord and heat vulcanized to provide a greater strength and serviceability.

1250-degree F
 Intermittent Exhaust Temperatures

1000-degree F
 Interior Temperature,
 per MIL PFR 62028

600-degree F
 Continuous Duty, Baking Test

Standard Diameters	4"	5"	6"	8"	10"	12"	I/O
Fiberglass Inner Ply Thickness	.015	.015	.015	.015	.015	.015	Inches
Nomex Outer Ply Thickness	.025	.025	.025	.025	.025	.025	Inches
Wire Gauge	.060	.070	.080	.080	.080	.080	Inches
Wall Thickness	.100	.110	.120	.125	.125	.125	Inches
Helix Pitch	.750	.880	1.000	1.000	1.000	1.000	Inches
Weight Per Foot	8.260	10.520	12.880	17.390	22.400	23.000	Ounces
Bending Radius	2.08	2.52	3.00	4.00	6.00	8.40	Inches

- * **Temperature Range: - 80 degrees F to 600 degrees F (Baking Test)**
 This product meets Military Spec: MIL PFR 62028 - Paragraph 4.7.8, 72 Hours at 1000 degrees F.
 This product has a temperature rating at 1250 degrees F for intermittent use.
- * **Standard Lengths: 16', 20', 24' (Longer Lengths Available);**
Standard Diameters: 4", 5", 6", 8" Optional Diameters (10", 12")

Series 4000 extraction hose meets the requirements of the United States Air Force for low temperature flexibility and high temperature stability.

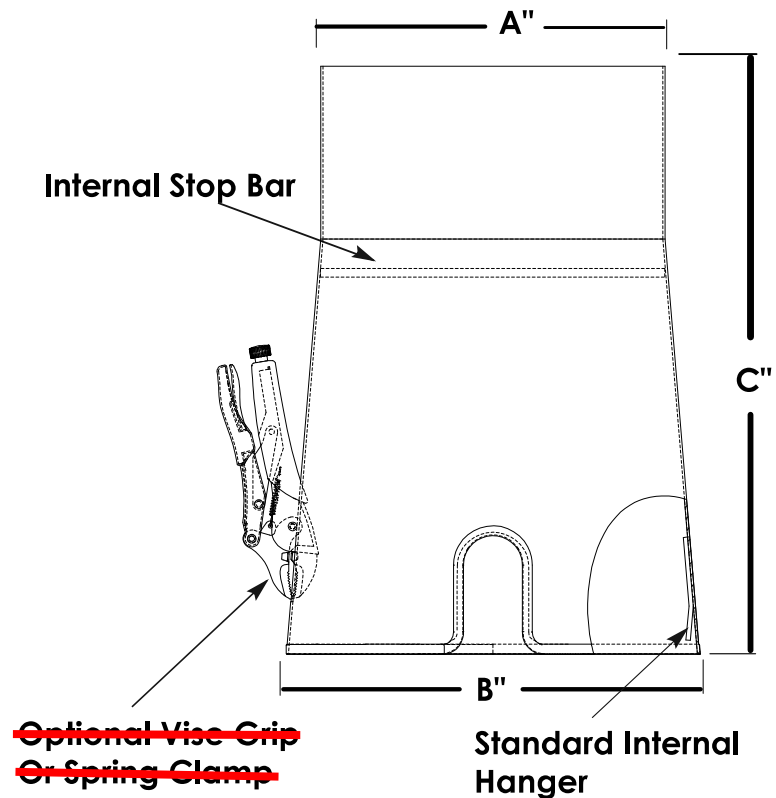
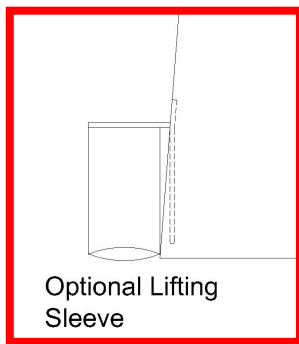
NOTE - The above diameters and lengths of the 4000 series hose are listed as standard. Other diameters and lengths are also available. Please contact MONOXIVENT for your Request.



**TECHNICAL
INFORMATION**

In the interest of continuing product improvement, we reserve the right to change models, specifications, and/or features without prejudice.

PROJECT: _____
 LOCATION: **HRFD-1.1 & VEF-1.1,**
 ARCHITECT: **HRFD-1.2 & VEF-1.2 AND**
 ENGINEER: **HRFD-1.3 & VEF-1.3**
 CONTRACTOR: _____
 DATE: _____ SALES ENGINEER: _____



ACCESSORIES

* Adapter Constructed of 18 Gauge 304 Stainless Steel

NOTE: The TCA is available with the optional spring clamp feature or vise grip lock.

Model	A	B	C
TCA-4	4"	6"	15"
TCA-5	5"	7"	15"
TCA-6	6"	8"	15"
TCA-8	8"	10"	17"
TCA-10	10"	12"	17"
TCA-12	12"	14"	17"
TCA-14	14"	16"	23"
TCA-16	16"	18"	25"
TCA-18	18"	20"	25"

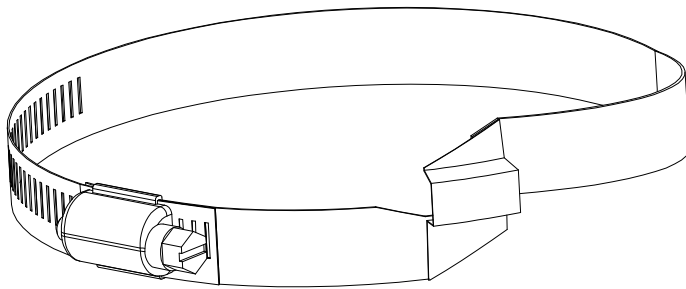
NOTE: The TCA adapter can be supplied with the lifting pole sleeve. See page AC-6 for lifting pole information. The TCA adapter can be supplied with optional accessories - such as locking hand dampers, handles, inlet screens, etc.

**TECHNICAL
INFORMATION**

In the interest of continuing product improvement,
we reserve the right to change models,
specifications, and/or features without prejudice.

PROJECT: _____
LOCATION: **HRFD-1.1 & VEF-1.1,** _____
ARCHITECT: **HRFD-1.2 & VEF-1.2 AND** _____
ENGINEER: **HRFD-1.3 & VEF-1.3** _____
CONTRACTOR: _____
DATE: _____ SALES ENGINEER: _____

BRIDGE CLAMP

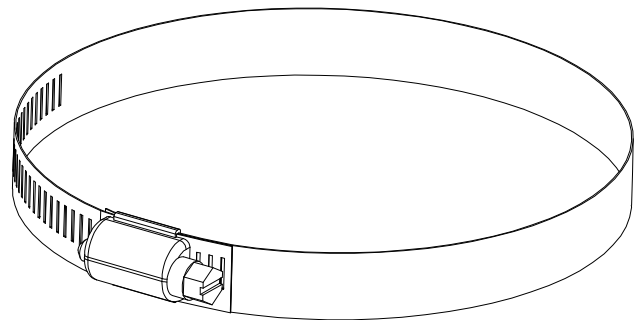


Used for flex with external helix.

Model Numbers

- BC-3 for 3" hose
- BC-4 for 4" hose
- BC-5 for 5" hose
- BC-6 for 6" hose
- BC-7 for 7" hose
- BC-8 for 8" hose
- BC-9 for 9" hose
- BC-10 for 10" hose
- BC-12 for 12" hose
- BC-14 for 14" hose
- BC-16 for 16" hose
- BC-18 for 18" hose
- BC-20 for 20" hose
- BC-22 for 22" hose
- BC-24 for 24" hose

WORM GEAR CLAMP



Used for flex with internal helix.

Model Numbers

- 23905 for 3" hose
- 23456 for 4", 5", 6" hose**
- 23909 for 8" hose
- 23910 for 10" hose

**TECHNICAL
INFORMATION**

In the interest of continuing product improvement, we reserve the right to change models, specifications, and/or features without prejudice.

PROJECT: _____
 LOCATION: **HRFD-1.1 & VEF-1.1,** _____
 ARCHITECT: **HRFD-1.2 & VEF-1.2 AND** _____
 ENGINEER: **HRFD-1.3 & VEF-1.3** _____
 CONTRACTOR: _____
 DATE: _____ SALES ENGINEER: _____

Direct Mount to Hose Reel - D-Series

Blower mounted by flange directly to hose reel.

The blower can be rotated 360 degrees in 90 degree increments. This allows for discharge for a variety of requirements.

Motor support strapping is required/provided by factory for D15, D20 & D30 blowers.



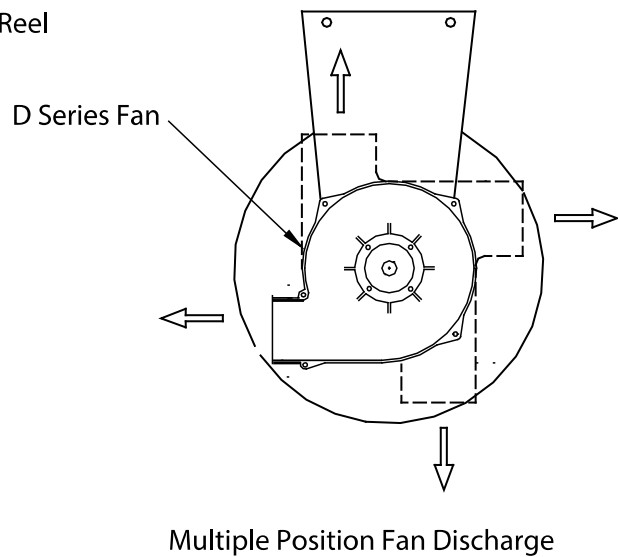
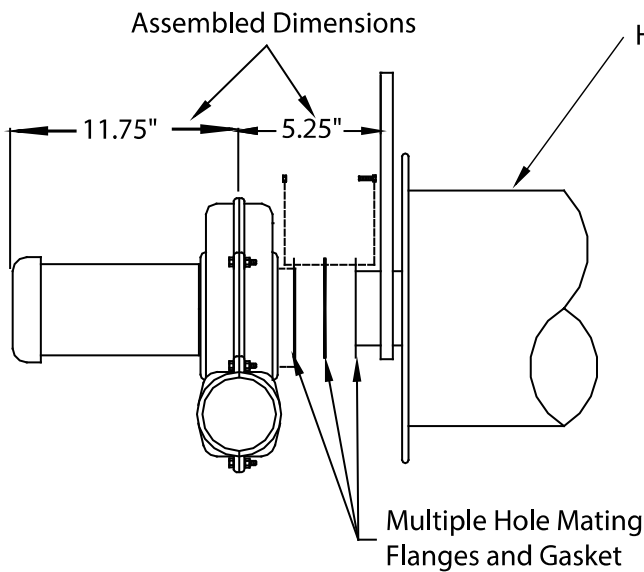
Models

Single Phase

- D075-SS-1-DMHR
- D10-SS-1-DMHR
- D15-LS-1-DMHR
- D20-LM-1-DMHR
- D30-LM-1-DMHR

Three Phase

- D075-SS-3-DMHR
- D10-SS-3-DMHR
- D15-LS-3-DMHR**
- D20-LM-3-DMHR
- D30-LM-3-DMHR



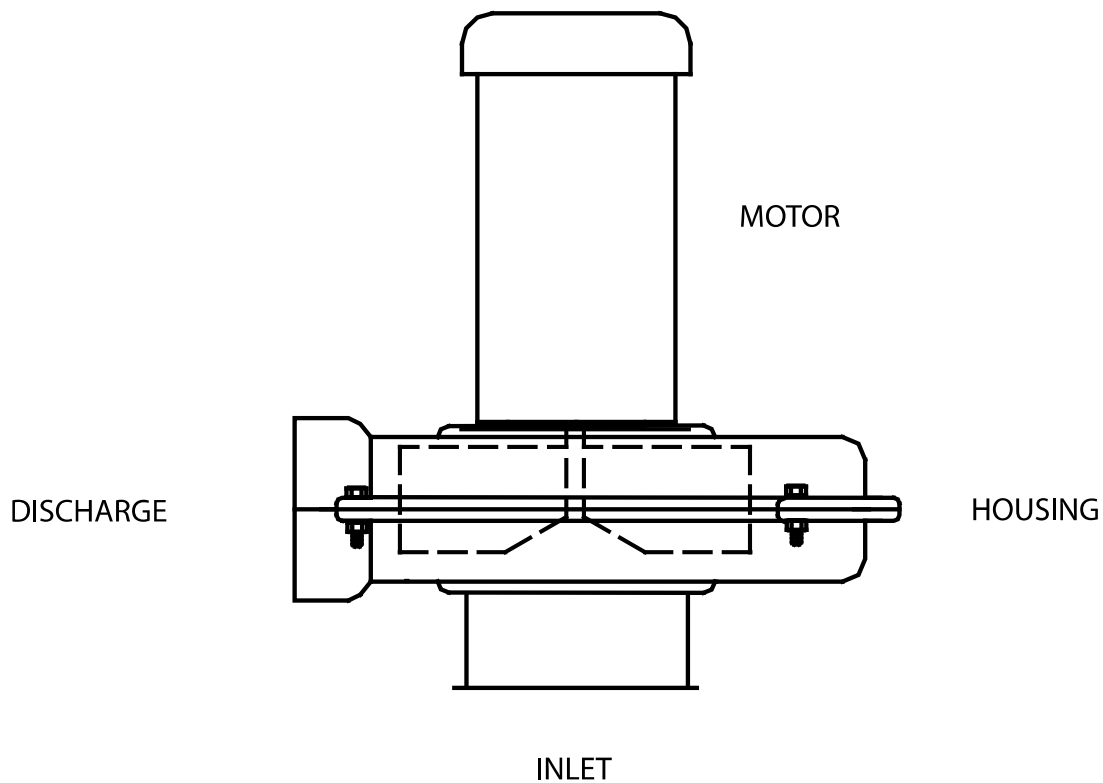
TECHNICAL INFORMATION

In the interest of continuing product improvement, we reserve the right to change models, specifications, and/or features without prejudice.

PROJECT: _____
LOCATION: **HRFD-1.1 & VEF-1.1,**
ARCHITECT: **HRFD-1.2 & VEF-1.2 AND**
ENGINEER: **HRFD-1.3 & VEF-1.3**
CONTRACTOR: _____
DATE: _____ SALES ENGINEER: _____

DIRECT DRIVE BLOWERS - D-SERIES

The D Series Blower is a high-quality pressure style unit. The construction is Silumin (Silicon Aluminum Alloy) for the housing and the wheel. Standard Motors are Baldor with TEFC Enclosure. Standard Motors are UL UR Recognized as a component and CSA Certified in Canada. The D Series fans are not UL Listed or CSA Certified as an assembly. Motor specifications subject to change without notice. The D-Series Blower is made in the USA.



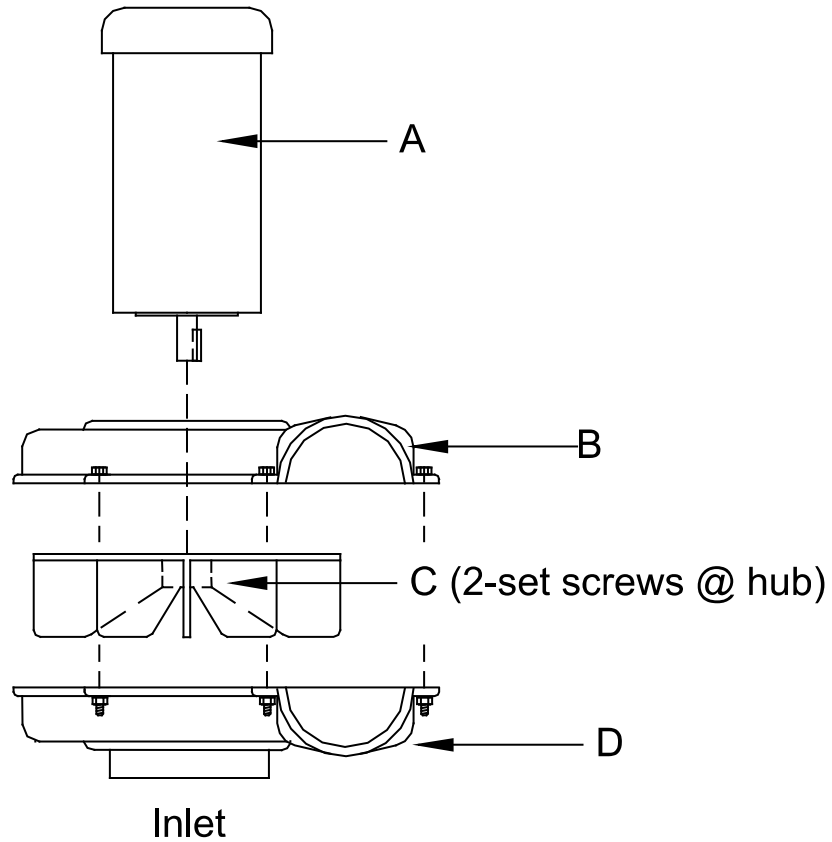
* Housings and wheels are available, less motors.

TECHNICAL INFORMATION

In the interest of continuing product improvement,
we reserve the right to change models,
specifications, and/or features without prejudice.

PROJECT: _____ **HRFD-1.1 & VEF-1.1,**
LOCATION: _____ **HRFD-1.2 & VEF-1.2 AND**
ARCHITECT: _____ **HRFD-1.3 & VEF-1.3**
ENGINEER: _____
CONTRACTOR: _____
DATE: _____ SALES ENGINEER: _____

D-SERIES BLOWER



- A** TEFC Motor - 3450 RPM - UL UR Recognized as a component and CSA Certified in Canada.
- B** Top Housing Constructed of Cast Silumin (Silicon Aluminum Alloy)
- C** Radial Wheel Constructed of Cast Silumin (Silicon Aluminum Alloy)
- D** Bottom Housing Constructed of Cast Silumin (Silicon Aluminum Alloy)

**The D Series Blower is a versatile exhauster, constructed of Silumin (Silicon Aluminum Alloy). The blower is available*

** The D Series Blower may be supplied with or without a mounting bracket. The blower shown (above) displays the motor, housing, and wheel only. (Housings and wheels are available, less motors). The D Series fans are not UL Listed or CSA Certified as an assembly. Motor specifications subject to change without notice.*



Direct Drive Fans
Blower Performance
D Series

TECHNICAL INFORMATION

In the interest of continuing product improvement, we reserve the right to change models, specifications, and/or features without prejudice.

PROJECT: **HRFD-1.1 & VEF-1.1,**
 LOCATION: **HRFD-1.2 & VEF-1.2 AND**
 ARCHITECT: **HRFD-1.3 & VEF-1.3**
 ENGINEER: _____
 CONTRACTOR: _____
 DATE: _____ SALES ENGINEER: _____

www.monoxivent.com

info@monoxivent.com

309-794-1000

Page: EF-4

BLOWER PERFORMANCE CFM RATINGS AT LISTED SP

Model	HP									DBA at
		1"	2"	3"	4"	5"	6"	7"	5'	
D05-SS	0.5	450	435	390	350	260	150	---	---	85
D075-SS	0.75	475	430	365	330	240	---	---	---	83
D10-SS	1.0	---	---	---	770	665	540	320	---	83
D15-LS	1.5	965	910	840	780	675	550	330	---	83
D20-LM	2.0	---	---	1237	1140	1070	990	915	---	86
D30-LM	3.0	1490	1420	1275	1213	1140	1070	990	---	86

* Note: Standard Motors are Baldor with TEFC Enclosure. Motor - 3450 RPM. Standard Motors are UL UR Recognized as a component and CSA Certified in Canada.

The D Series Fans are not UL Listed or CSA Certified as an assembly.

Motor specifications subject to change without notice.

The construction is Silumin (Silicon Aluminum Alloy) for the housing and the wheel.

--- = Unstable operation

1 Phase:
115/208/230 Volt

3 Phase:
208/230/460/575 Volt

**TECHNICAL
INFORMATION**

In the interest of continuing product improvement,
we reserve the right to change models,
specifications, and/or features without prejudice.

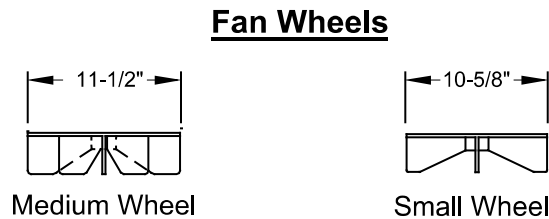
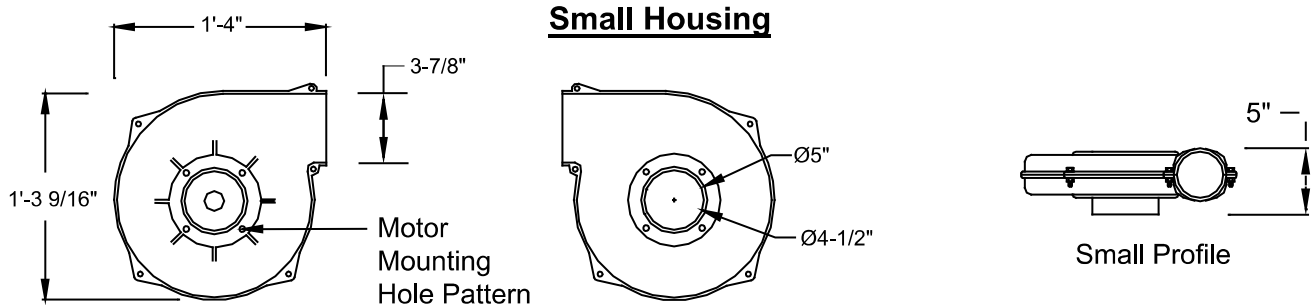
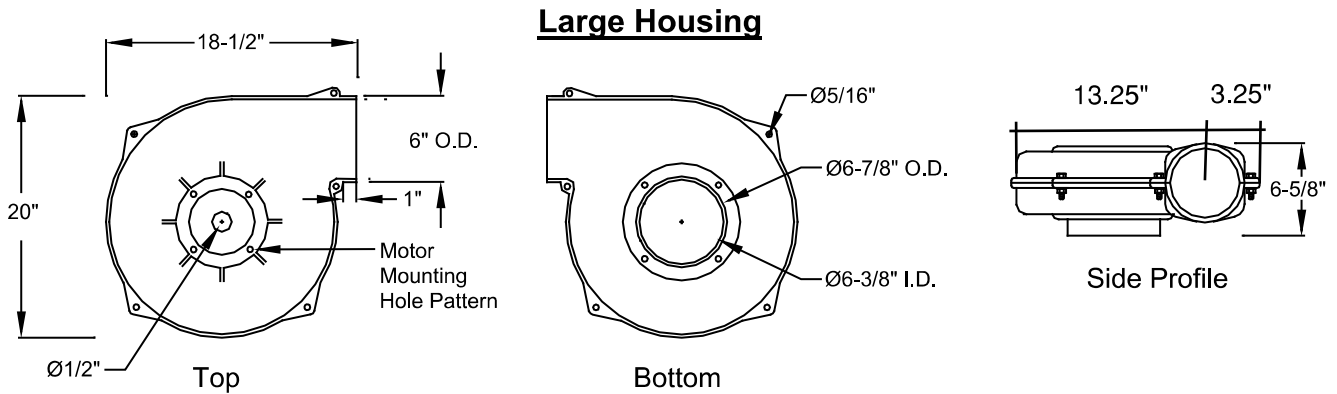
PROJECT: _____
LOCATION: **HRFD-1.1 & VEF-1.1,**
ARCHITECT: **HRFD-1.2 & VEF-1.2 AND**
ENGINEER: **HRFD-1.3 & VEF-1.3**
CONTRACTOR: _____
DATE: _____ SALES ENGINEER: _____

www.monoxivent.com

info@monoxivent.com

309-794-1000

Page: EF-3



Configurations

Electrical - FLA

Single Phase

Three Phase

Model	HP	Housing	Wheel	Weights	HP	Single Phase			Three Phase			
						115V	208V	230V	208V	230V	460V	575V
D075-SS	.75	Small	Small	75 lbs.	.75	9.6	6.1	4.8	3.1	2.6	1.3	.96
D10-SS	1.0	Small	Small	75 lbs.	1.0	11.8	6.1	5.9	3.0	2.8	1.4	1.1
D15-LS	1.5	Large	Small	75 lbs.	1.5	16.0	8.4	8.0	4.0	3.8	1.9	1.5
D20-LM	2.0	Large	Medium	80 lbs.	2.0	23.0	12.0	11.5	5.3	5.0	2.5	2.0
D30-LM	3.0	Large	Medium	80 lbs.	3.0	--	--	13	7.9	7.2	3.6	2.9

**VEF-1.1, 1.2 & 1.3:
18.5"LX16.5"W X20"H.
OP. WT. 75 LBS., SAY 80 LBS.**



Control Box Starter (CBS)
Electrical Components

TECHNICAL INFORMATION

In the interest of continuing product improvement,
we reserve the right to change models,
specifications, and/or features without prejudice.

PROJECT: _____
 LOCATION: **HRFD-1.1 & VEF-1.1,** _____
 ARCHITECT: **HRFD-1.2 & VEF-1.2 AND** _____
 ENGINEER: **HRFD-1.3 & VEF-1.3** _____
 CONTRACTOR: _____
 DATE: _____ SALES ENGINEER: _____

www.monoxivent.com

info@monoxivent.com

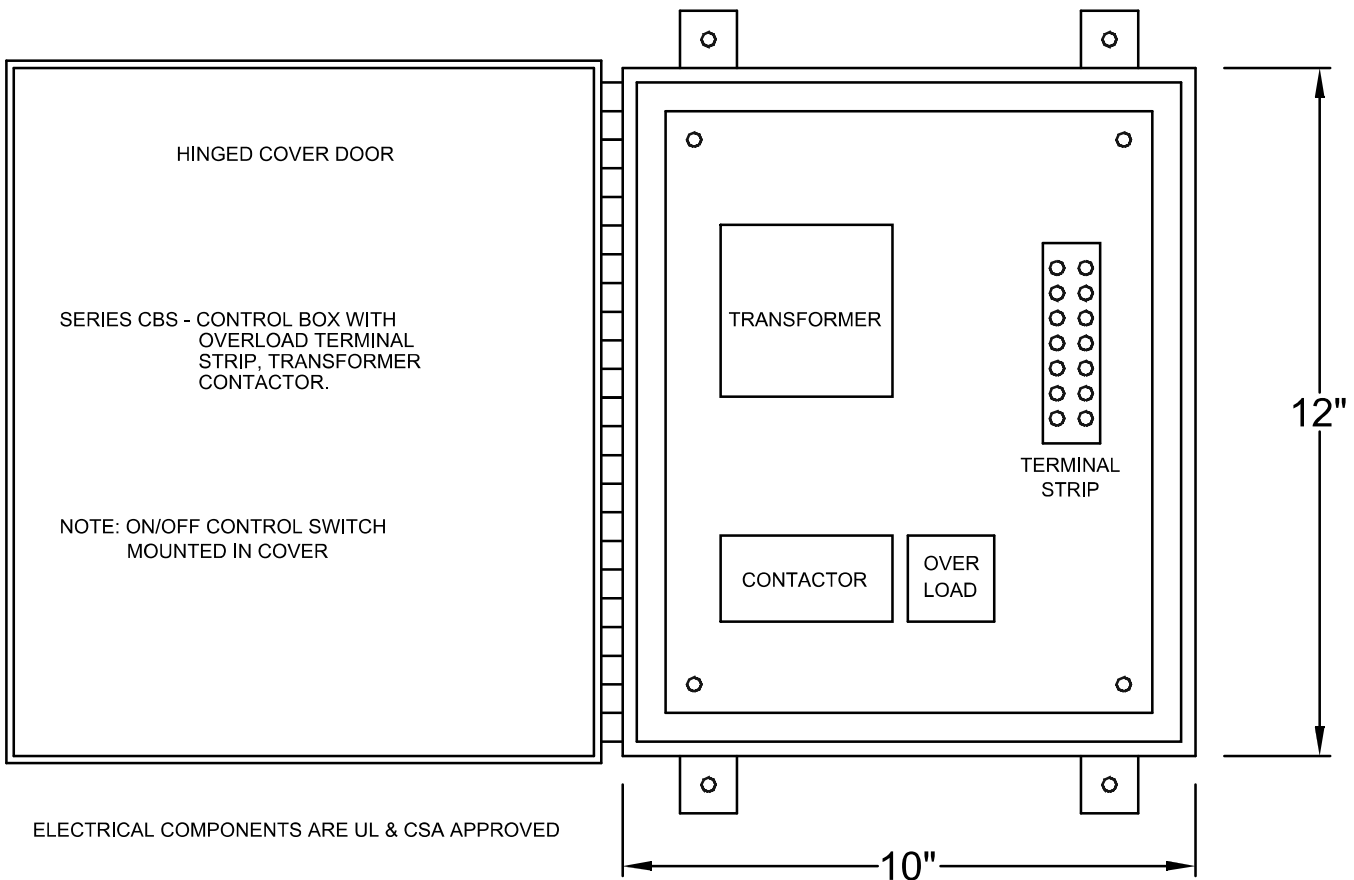
309-794-1000

Page: EF-31

Control Box Starter (CBS) • Electrical Components

NEMA 12 BOX

12" X 10" X 5"



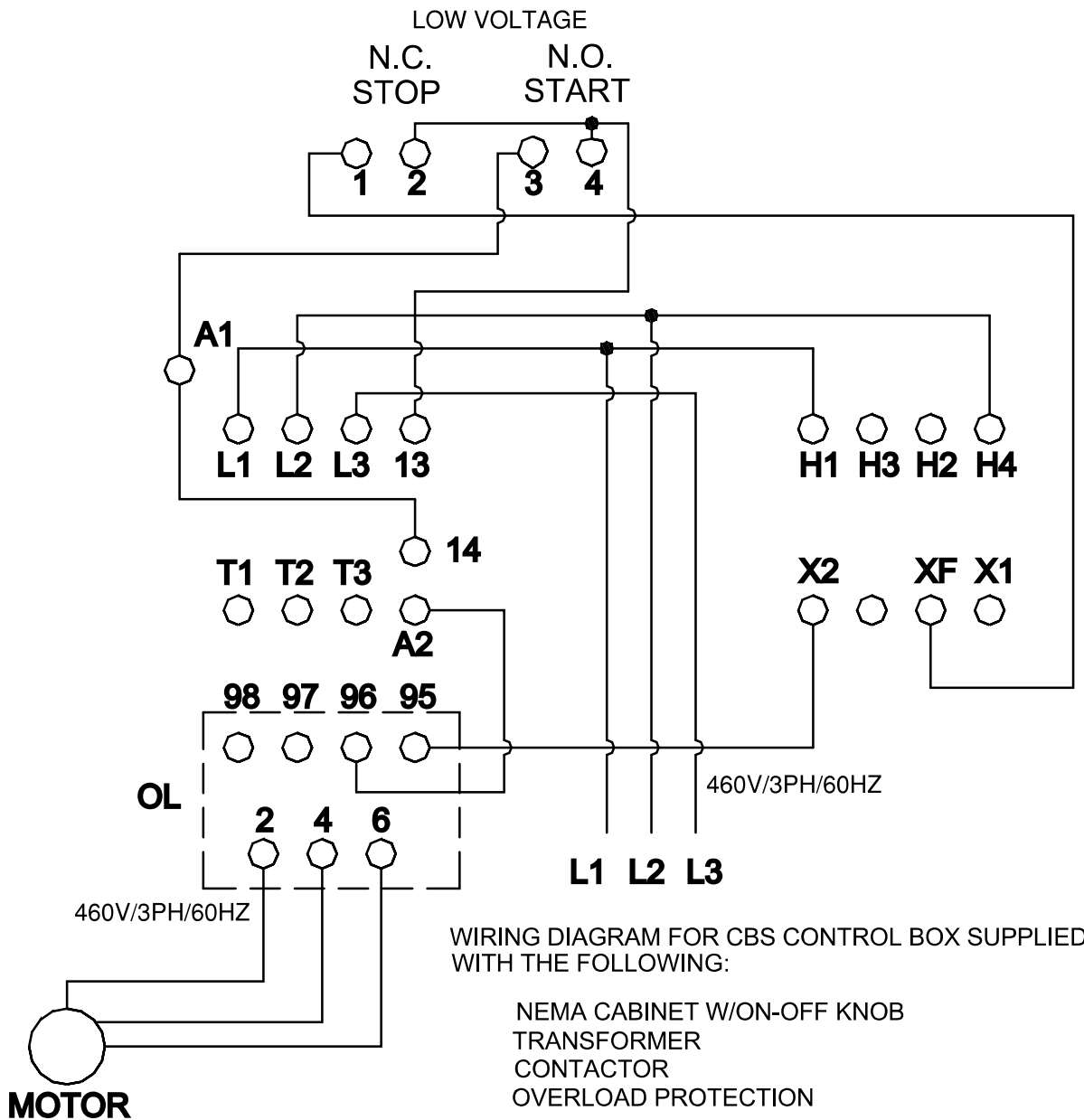
**VEF-1.1, 1.2 & 1.3 CONTROL BOX/ELECTRICAL PANEL:
10"LX5"W X12"H.
OP. WT. 30 LBS.**

**TECHNICAL
INFORMATION**

In the interest of continuing product improvement,
we reserve the right to change models,
specifications, and/or features without prejudice.

PROJECT: _____
LOCATION: **HRFD-1.1 & VEF-1.1,** _____
ARCHITECT: **HRFD-1.2 & VEF-1.2 AND** _____
ENGINEER: **HRFD-1.3 & VEF-1.3** _____
CONTRACTOR: _____
DATE: _____ SALES ENGINEER: _____

Control Box Starter (CBS) • Wiring Diagram



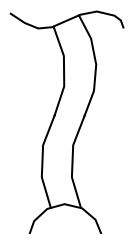
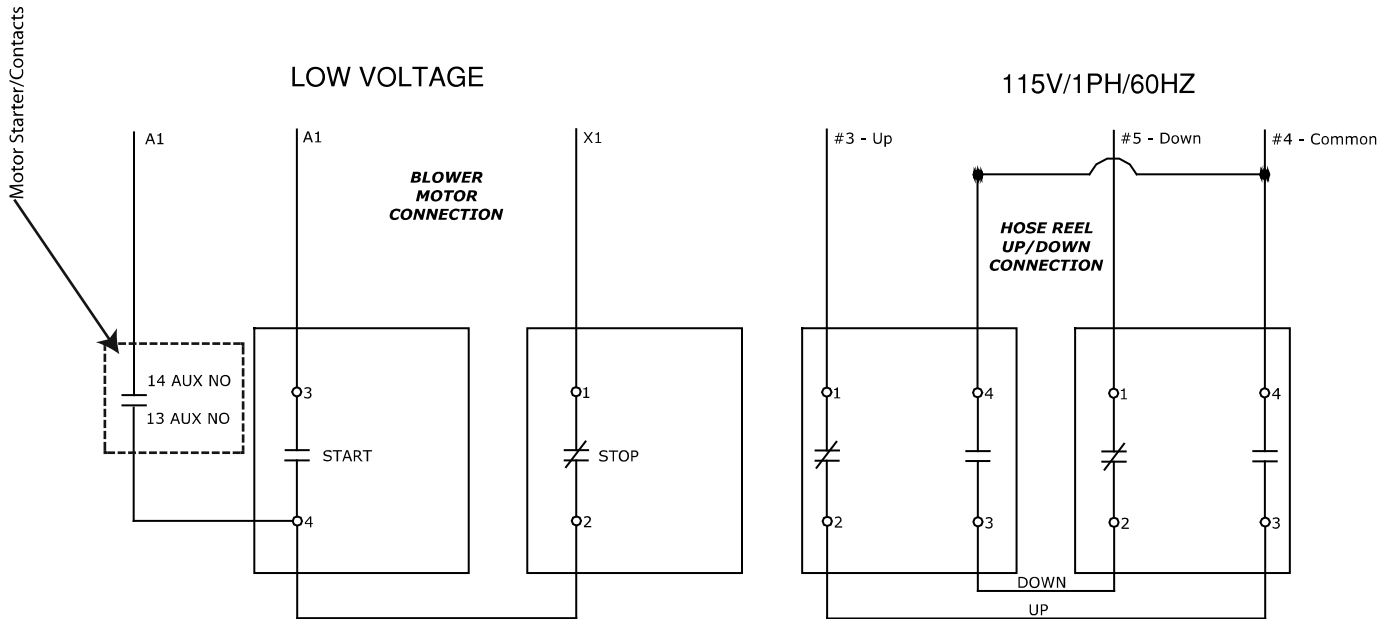
VEF-1.1, 1.2 & 1.3 CONTROL BOX/ELECTRICAL PANEL

**TECHNICAL
INFORMATION**

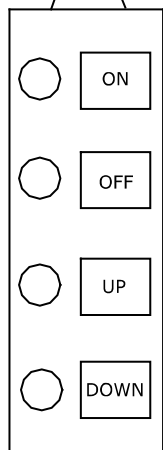
In the interest of continuing product improvement,
we reserve the right to change models,
specifications, and/or features without prejudice.

PROJECT: _____
 LOCATION: _____
 ARCHITECT: _____
 ENGINEER: _____
 CONTRACTOR: _____
 DATE: _____ SALES ENGINEER: _____

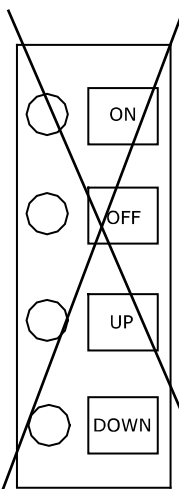
MONOXIVENT 4-BUTTON HANGING PENDULUM, 4-BUTTON WALL/COLUMN MOUNT & WIRING DIAGRAM



**P4 PENDULUM SWITCH:
2.5"LX2"W X5"H.
OP. WT. 10 LBS.**



4-Button
Hanging
Pendulum



4-Button
Wall/Column
Mount

Monoxivent will supply: the push buttons, cover box, 20' power cord (hanging pendulum only), strain relief fittings (hanging pendulum only), and junction box.

Tag Data - Indoor Gas Heating Products (Qty: 2)

Item	Tag(s)	Qty	Description	Model Number
A1	GH-1, GH-2	2	Indoor Gas Heating Products (GIXC)	GLND020EEG10000----000#

GH-1.1 & GH-1.2

Product Data - Indoor Gas Heating Products

Item: A1 Qty: 2 Tag(s): GH-1, GH-2

High efficiency indoor gas duct furnace

Natural gas

→ 200 MBH input/166 MBH output

→ 460/60/3 main power supply **3/4 HP**

Two stage gas control, intermittent pilot

Seventh design

Aluminized steel heat exchanger

Open Drip Proof (ODP)

Mechanical Specifications - Indoor Gas Heating Products
Item: A1 Qty: 2 Tag(s): GH-1, GH-2**GH-1.1 & GH-1.2****General - Centrifugal Fan/Duct Furnace**

Unit is completely factory assembled, piped, wired, and test fired. Unit is ETL Certified, and conforms with the latest ANSI Z83.8/CSA 2.6 Standards for safe and efficient performance. Unit is provided with four point suspension hangers.

Casing for L,M

Casing is die-formed, 20 gauge [1.0 mm] cold rolled steel and finished in baked enamel. The bottom panel is easily removed to provide service access to the burners, pilot and orifices. Unit shall be provide with a air inlet and outlet duct flanges for use with field duct work.

Casing - Duct Furnace

Casing is die-formed, 20 gauge [1.0 mm] galvanized steel and finished in baked enamel. The bottom panel is easily removed to provide service access to the burners, pilot and orifices. The pilot is also accessible through a side panel access plate. The high limit switch is accessible through a side panel access.

Clamshell Heat Exchanger - Alumnized Steel

Heat Exchanger construction consists of seam welded 20 gauge [1.0 mm] aluminized steel and 18 gauge [1.3 mm] aluminized steel headers. Unit shall have a minimum of 80% thermal efficiency.

Flue Collector- Aluminized steel

Flue Collector construction is corrosion resistant aluminized steel.

Burners - Aluminized

Burners are die-formed, corrosion resistant aluminized steel, with stainless steel port protectors. Port protectors prevent scale or foreign matter from obstructing the burner ports. Burners individually removable for ease of inspection and servicing. Each burner is provided with an individually adjustable, manually rotated air shutter adjustment.

Flue Vent Fan

Flue vent fan provides power venting. Provided factory assembled to a sealed flue collection chamber.

Unit-460 volt

Unit shall be 460 volt, 60 hertz, three phase.

Motor-ODP

Motor is open drip proof with built in thermal overload protection.

Control - Hi-Eff Duct Furnace

A factory installed junction box is provided for all power connections. Standard unit is provided with a 24-volt combination single-stage redundant gas valve, consisting of a combination pilot solenoid valve, automatic electric gas valve, pilot filter, pressure regulator, pilot adjustment and manual shutoff. A flue vent fan relay and combustion air proving switch is also provided. Equipment includes spark-ignited intermittent pilot system with electronic flame supervision. A 24-volt control transformer and high limit and are provided.

Two Stage Gas Valve

Provide two-stage gas valve in leui of single-stage gas valve.Provides two stages of heat. Ignition is at low fire (50% of the furnaces rated input). Requires the use of a two-stage thermostat.

2 Stage Pilot

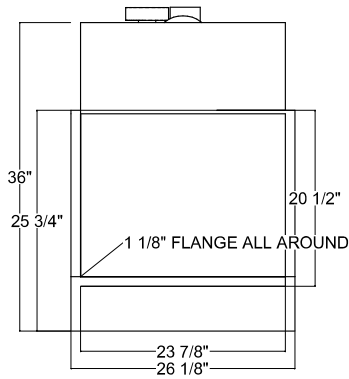
Solid state ignition control system ignites the pilot by spark during each cycle of operation. When pilot flame is proven, main burner valve opens to allow gas flow to burners. Pilot and burners are extinguished during off cycle. Required on California units.

Unit Dimensions - Indoor Gas Heating Products
Item: A1 Qty: 2 Tag(s): GH-1, GH-2

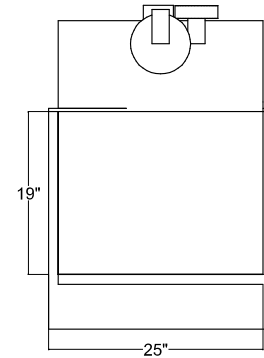
GH-1.1 & GH-1.2

CLEARANCE	SIDE	TOP	BTM	CTL/BOX	FAN	FLUE
GL	6"	6"	21"	6"	N/A	6"

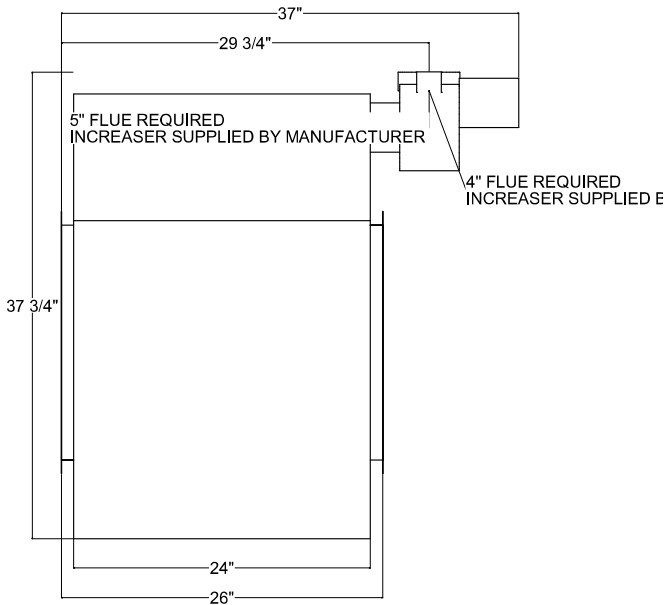
MBH	WEIGHT
200	232.0 lb



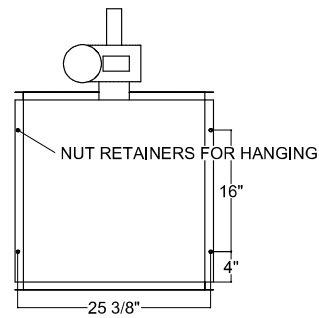
FRONT



BACK



RIGHT



26-1/8"LX26"WX37-3/4"H
OP.WT. 240 LBS.

TOP

Tag Data - Indoor Gas Heating Products (Qty: 1)

Item	Tag(s)	Qty	Description	Model Number
A1	GH-1.3	1	Indoor Gas Heating Products (GIXC)	GLND010EEG10000-----000#

GH-1.3 & GH-1.4**Product Data - Indoor Gas Heating Products****Item: A1 Qty: 1 Tag(s): GH-1.3**

High efficiency indoor gas duct furnace

Natural gas

→ 100 MBH input/83 MBH output

→ 1/2 HP

→ 460/60/3 main power supply

Two stage gas control, intermittent pilot

Seventh design

Aluminized steel heat exchanger

Open Drip Proof (ODP)

Mechanical Specifications - Indoor Gas Heating Products GH-1.3 & GH-1.4
Item: A1 Qty: 1 Tag(s): GH-1.3**General - Centrifugal Fan/Duct Furnace**

Unit is completely factory assembled, piped, wired, and test fired. Unit is ETL Certified, and conforms to the latest ANSI Z83.8/CSA 2.6 Standards for safe and efficient performance. Unit is provided with four point suspension hangers.

Casing for L, M

Casing is die-formed, 20 gauge [1.0 mm] cold rolled steel and finished in baked enamel. The bottom panel is easily removed to provide service access to the burners, pilot and orifices. Unit shall be provide with an air inlet and outlet duct flanges for use with field duct work.

Casing - Duct Furnace

Casing is die-formed, 20 gauge [1.0 mm] galvanized steel and finished in baked enamel. The bottom panel is easily removed to provide service access to the burners, pilot and orifices. The pilot is also accessible through a side panel access plate. The high limit switch is accessible through a side panel access.

Clamshell Heat Exchanger - Alumnized Steel

Heat Exchanger construction consists of seam welded 20 gauge [1.0 mm] aluminized steel and 18 gauge [1.3 mm] aluminized steel headers. Unit shall have a minimum of 80% thermal efficiency.

Flue Collector- Aluminized steel

Flue Collector construction is corrosion resistant aluminized steel.

Burners - Aluminized

Burners are die-formed, corrosion resistant aluminized steel, with stainless steel port protectors. Port protectors prevent scale or foreign matter from obstructing the burner ports. Burners individually removable for ease of inspection and servicing. Each burner is provided with an individually adjustable, manually rotated air shutter adjustment.

Flue Vent Fan

Flue vent fan provides power venting. Provided factory assembled to a sealed flue collection chamber.

Unit-460 volt

Unit shall be 460 volt, 60 hertz, three phase.

Motor-ODP

Motor is open drip proof with built in thermal overload protection.

Control - Hi-Eff Duct Furnace

A factory installed junction box is provided for all power connections. Standard unit is provided with a 24-volt combination single-stage redundant gas valve, consisting of a combination pilot solenoid valve, automatic electric gas valve, pilot filter, pressure regulator, pilot adjustment and manual shutoff. A flue vent fan relay and combustion air proving switch is also provided. Equipment includes spark-ignited intermittent pilot system with electronic flame supervision. A 24-volt control transformer and high limit and are provided.

Two Stage Gas Valve

Provide two-stage gas valve in lieu of single-stage gas valve. Provides two stages of heat. Ignition is at low fire (50% of the furnaces rated input). Requires the use of a two-stage thermostat.

2 Stage Pilot

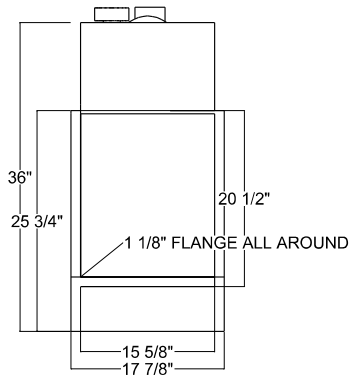
Solid state ignition control system ignites the pilot by spark during each cycle of operation. When pilot flame is proven, main burner valve opens to allow gas flow to burners. Pilot and burners are extinguished during off cycle. Required on California units.

Unit Dimensions - Indoor Gas Heating Products **GH-1.3 & GH-1.4**

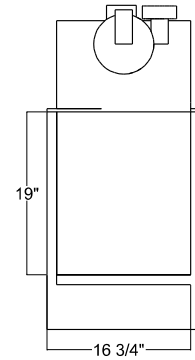
Item: A1 Qty: 1 Tag(s): GH-1.3

CLEARANCE	SIDE	TOP	BTM	CTL/BOX	FAN	FLUE
GL	6"	6"	21"	6"	N/A	6"

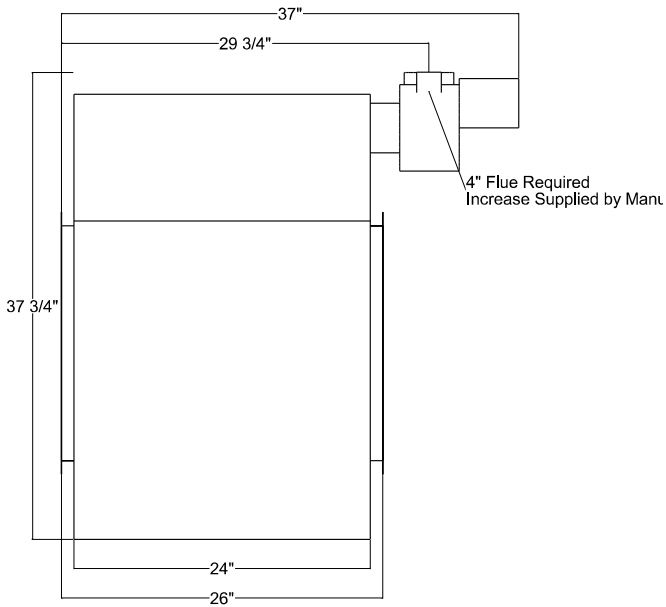
MBH	WEIGHT
100	173.0 lb



FRONT

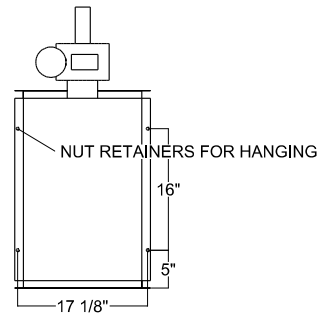


BACK



RIGHT

**17-1/8" LX 26" WX 37-3/4" H
OP. WT. 180 LBS.**



TOP



Trane Precedent Gas/Electric Packaged Rooftop

Unit Overview - YHC037E4RXA**06D100000000000000A000000

Application	Unit Size	Supply Fan		External Dimensions (in.)			Operating Weight		EER	IEER/SEER	Elevation
		Airflow	External Static Pressure	Height	Width	Length	Minimum	Maximum			
DX cooling, gas heat	3 Ton 17 SEER (037)	960 cfm	1,300 in H2O	3.02 ft	3.69 ft	5.82 ft	544.0 lb	767.0 lb	13.00	17.50	

Unit Features

SupplyFan/Drive/ MotorType	Single Zone VAV
Condenser coil protection	Std condenser coil w/hail guard
Hinged Service Access/Filters	Std panel/2 in pltd filters MERV 13

Unit Electrical

Voltage/phase/hertz	460/60/3
MCA	12.00 A
MOP	15.00 A

840 lbs with Roof Curb



Controls

Unit Controls Microprocessor controls

Cooling Section

Cooling Section		Capacity	
Entering Dry Bulb	77.70 F	Gross Total	31.75 MBh
Entering Wet Bulb	63.80 F	Gross Sensible	24.48 MBh
Ambient Temp	99.00 F	Net Total	29.96 MBh
Leaving Coil Dry Bulb	54.09 F	Net Sensible	22.70 MBh
Leaving Coil Wet Bulb	52.22 F	Fan Motor Heat	1.79 MBh
Leaving Unit Dry Bulb	56.31 F	Refrig Charge-circuit 1	7.6 lb
Leaving Unit Wet Bulb	53.16 F		
Refrigeration System Options			
Leaving Dew Point	50.81 F		

Heating Section

Heat Type	Gas Heat
Heating Stages	1
Output Heating Capacity	48.60 MBh
Output Heating Capacity with Fan	50.39 MBh
Heating EAT	61.80 F
Heating LAT	108.90 F
Heating Temp Rise	47.10 F

Fan Section

Indoor Fan Data		Outdoor Fan Data	
Type	FC Centrifugal	Type	Propeller
Drive Type	Direct	Fan Quantity	1
Evap Fan FLA	3.70 A	Drive Type	Direct
Indoor Fan Performance		Outdoor Fan Performance	
Airflow	960 cfm	Outdoor Motor Power	0.21 kW
Design ESP	1,300 in H2O	Condenser Fan FLA	0.60 A
Component SP	0.040 in H2O		
Total SP	1.340 in H2O		
Supply Motor Horsepower	0.750 hp		
Indoor Motor Operating Power	0.59 bhp		
Indoor Motor Power	0.44 kW		
Indoor RPM	1085 rpm		

Compressor Section

Power	2.48 kW
Circuit 1 RLA	5.70 A
Circuit 2 RLA	0.00 A

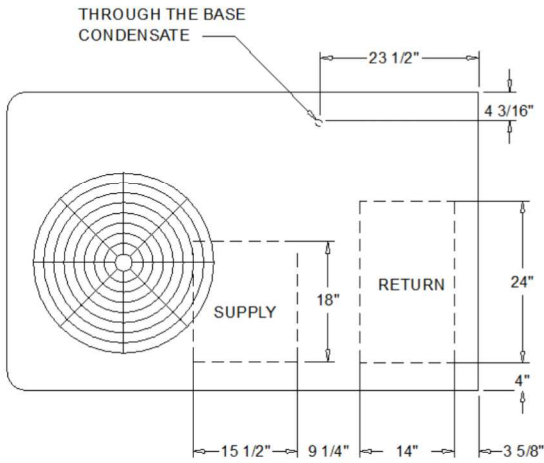
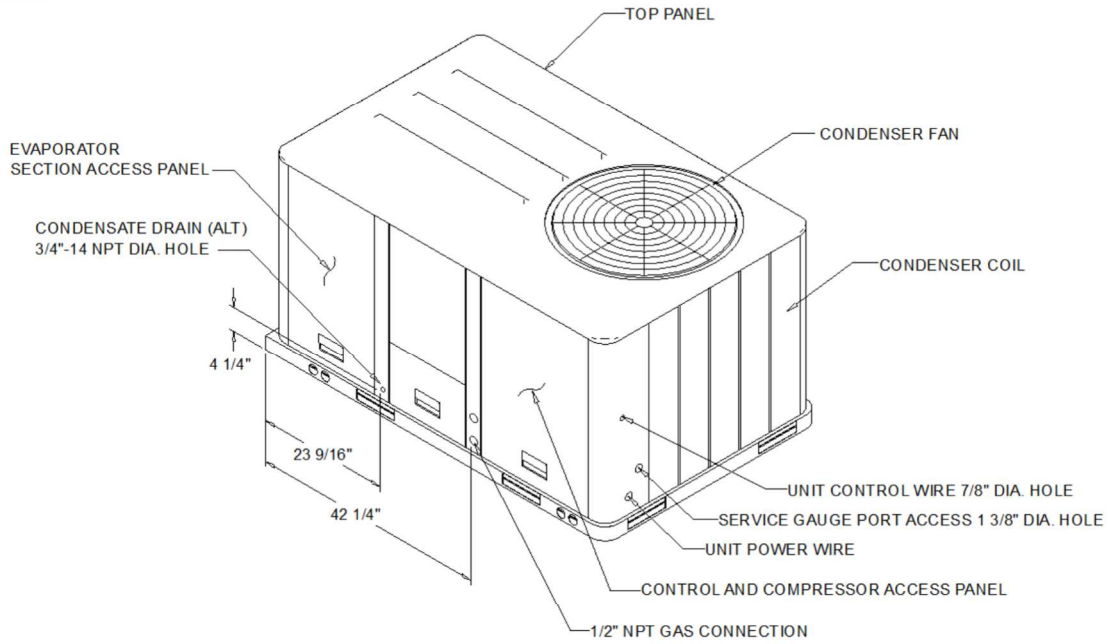


Job Name: AUSD-VMF-School Bus Repair Facility/Garage
Prepared For:
Unit Tag: AC-1-ULN
Quantity: 1

(FUTURE) AC-1.1

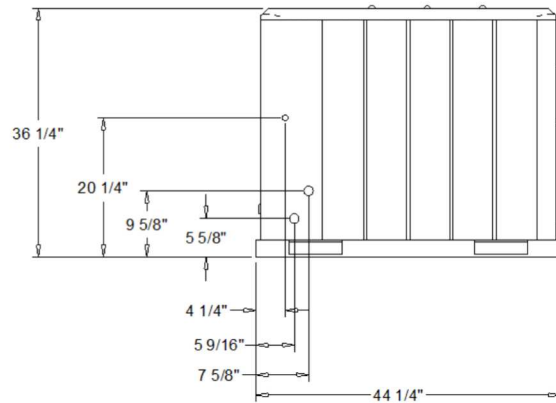
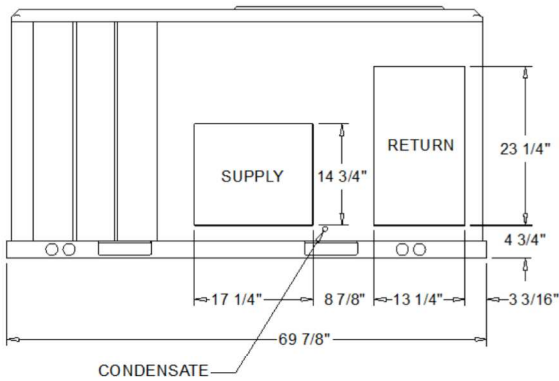
Acoustics

Sound Path	63 Hz	125 Hz	250 Hz	500 Hz	1 kHz	2 kHz	4 kHz	8 kHz
------------	-------	--------	--------	--------	-------	-------	-------	-------



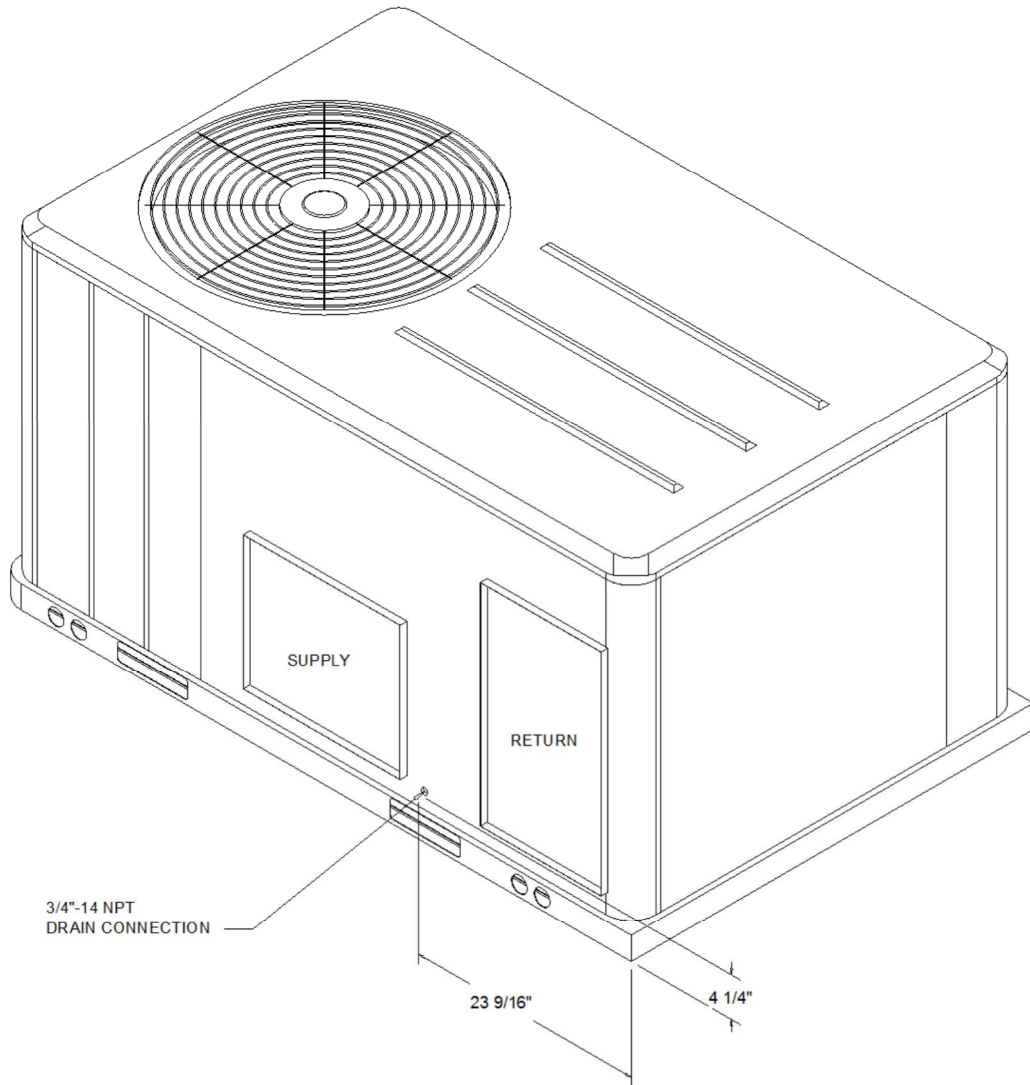
- NOTES:
 1. THRU -THE -BASE GAS AND ELECTRICAL IS NOT STANDARD ON ALL UNITS.
 2. VERIFY WEIGHT, CONNECTION, AND ALL DIMENSION WITH INSTALLER DOCUMENTS BEFORE INSTALLATION

PLAN VIEW UNIT
 DIMENSION DRAWING



HORIZONTAL AIR FLOW

PACKAGED GAS / ELECTRICAL
 DIMENSION DRAWING



ISOMETRIC-PACKAGED COOLING



ELECTRICAL / GENERAL DATA

GENERAL (2)(4)(6) Model: YHC037E Oversized Motor Unit Operating Voltage: 414-506 Unit Primary Voltage: 460 Unit Secondary Voltage: -- Unit Hertz: 60 Unit Phase: 3 13.0/17.5 Standard Motor MCA: 12.0 MFS: 15.0 MCB: 15.0		HEATING PERFORMANCE HEATING - GENERAL DATA Heating Model: Low Heating Input (BTU): 60000 Heating Output (BTU): 48600 No. Burners: 2 No. Stages: 1 Gas Inlet Pressure Natural Gas (Min/Max): 4.5/14.0 LP (Min/Max): - Gas Pipe Connection Size: 1/2"	
INDOOR MOTOR Standard Motor Number: 1 Horsepower: 0.75 Motor Speed (RPM): -- Phase: 1 Full Load Amps: 3.7 Locked Rotor Amps: --		Oversized Motor Number: Horsepower: Motor Speed (RPM): Phase: Full Load Amps: Locked Rotor Amps:	
COMPRESSOR Circuit 1/2 Number: 1 Horsepower: 2.7 Phase: 3 Rated Load Amps: 5.7 Locked Rotor Amps: -		OUTDOOR MOTOR Number: 1 Horsepower: 0.20 Motor Speed (RPM): 1075 Phase: 1 Full Load Amps: 0.6 -	
POWER EXHAUST ACCESSORY (3.7) (Field Installed Power Exhaust) Phase: N/A Horsepower: N/A Motor Speed (RPM): N/A Full Load Amps: N/A Locked Rotor Amps: N/A	FILTERS Type: Furnished: Yes Number: 2 Recommended: 20"x30"x2"		REFRIGERANT (2) Type Factory Charge Circuit #1: 7.8 lb Circuit #2: N/A

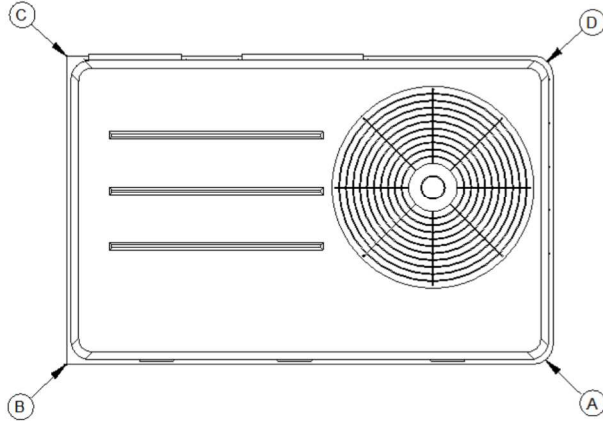
NOTES:

1. Maximum (HACR) Circuit Breaker sizing is for installations in the United States only.
2. Refrigerant charge is an approximate value. For a more precise value, see unit nameplate and service instructions.
3. Value does not include Power Exhaust Accessory.
4. Value includes oversized motor.
5. Value does not include Power Exhaust Accessory.
6. EER is rated at AHRI conditions and in accordance with DOE test procedures.
7. Installation of this power exhaust kit will affect unit level MCA and could affect MOP sizing having a direct impact on existing field wiring and unit protection devices. The change in MCA/MOP is the sole responsibility of the field installing party. Trane will not issue new nameplates as a result of this power exhaust accessory installation. FLA of the power exhaust kit option must be added to the MCA of the unit for building supply conductor sizing determination.

UVGI ACCESSORY

(Factory Installed)

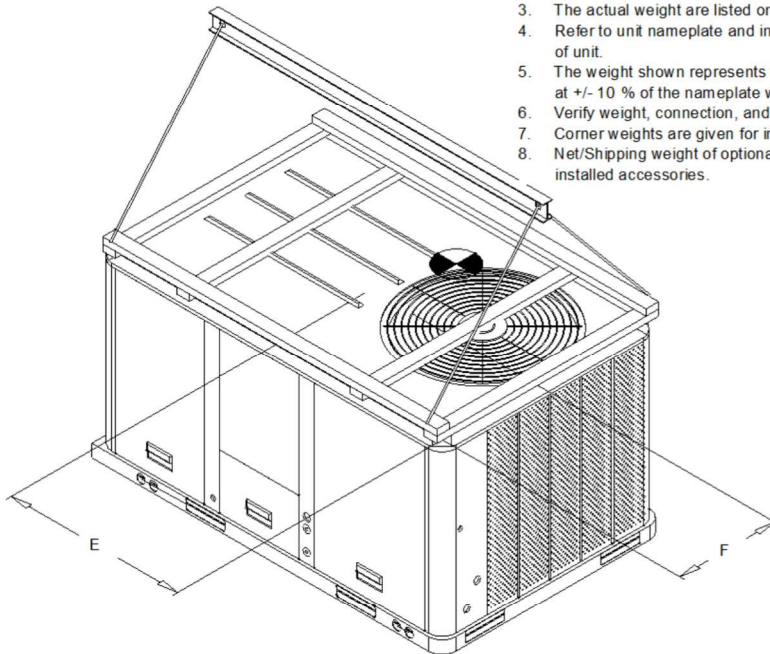
Voltage (V): 120
 Power (W): 75
 Current (A): 1.6

INSTALLED ACCESSORIES NET WEIGHT DATA

PACKAGED GAS / ELECTRICAL
 CORNER WEIGHT

ACCESSORY		WEIGHTS			
ECONOMIZER					
MOTORIZED OUTSIDE AIR DAMPER					
MANUAL OUTSIDE AIR DAMPER					
BAROMETRIC RELIEF					
OVERSIZED MOTOR					
BELT DRIVE MOTOR					
POWER EXHAUST					
THROUGH THE BASE ELECTRICAL/GAS (FIOPS)					
UNIT MOUNTED CIRCUIT BREAKER (FIOPS)					
UNIT MOUNTED DISCONNECT (FIOPS)					
POWERED CONVENIENCE OUTLET (FIOPS)					
HINGED DOORS (FIOPS)					
HAIL GUARD			12.0 lb		
SMOKE DETECTOR, SUPPLY / RETURN					
NOVAR CONTROL					
STAINLESS STEEL HEAT EXCHANGER			4.0 lb		
REHEAT					
ROOF CURB					
BASIC UNIT WEIGHTS		CORNER WEIGHTS		CENTER OF GRAVITY	
SHIPPING	NET	(A)	(C)	(E) LENGHT	(F) WIDTH
676.0 lb	606.0 lb	(B)	162.0 lb	(D)	139"
					33"
					19"

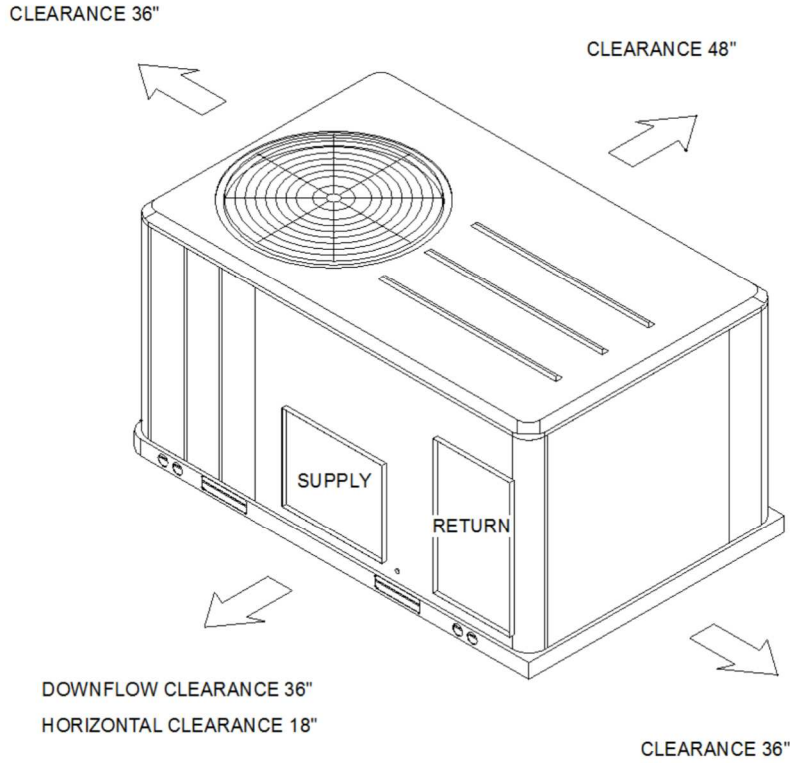
NOTE:

1. All weights are approximate.
2. Weights for options that are not list refer to Installation guide.
3. The actual weight are listed on the unit nameplate.
4. Refer to unit nameplate and installation guide for weights before scheduling transportation and installation of unit.
5. The weight shown represents the typical unit operating weight for the configuration selected. Estimated at +/- 10 % of the nameplate weight .
6. Verify weight, connection, and all dimension with installer documents before installation.
7. Corner weights are given for information only.
8. Net/Shipping weight of optional accessories should be added to unit weight when ordering factory or field installed accessories.


PACKAGED GAS / ELECTRICAL
 RIGGING AND CENTER OF GRAVITY

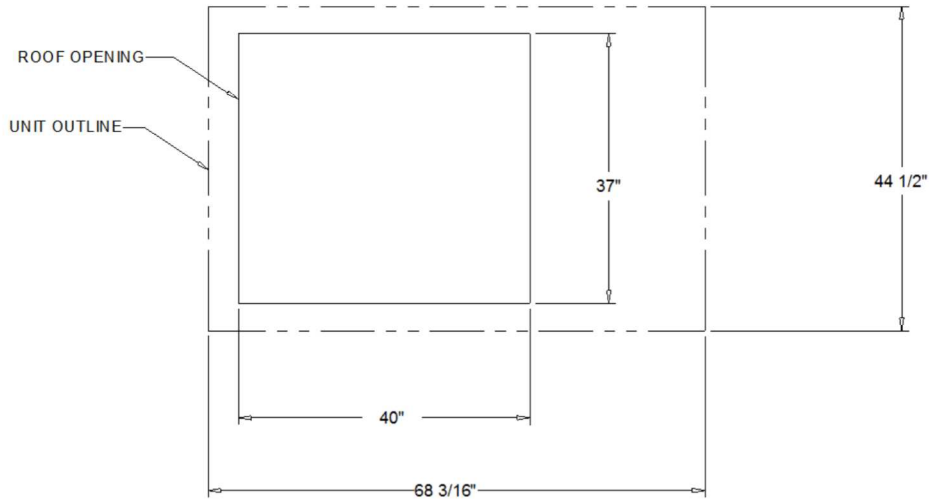


CLEARANCE FROM TOP OF UNIT 72"



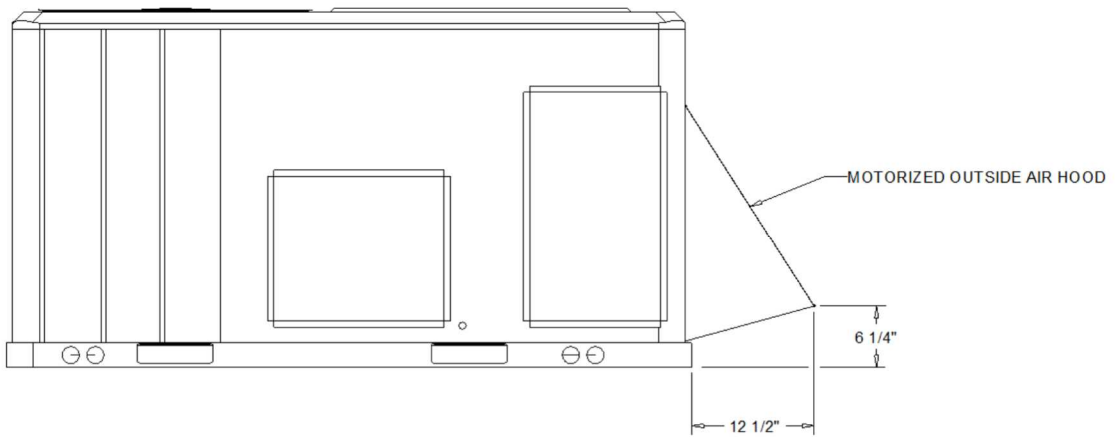
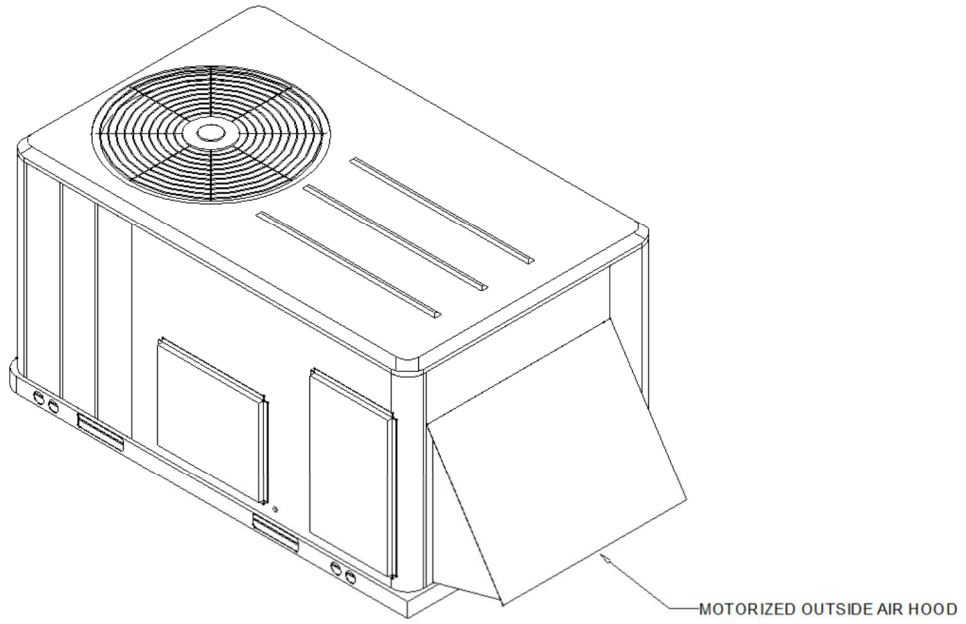
PACKAGED GAS / ELECTRIC

CLEARANCE



PACKAGED GAS / ELECTRIC

DOWNFLOW TYPICAL ROOF OPENING



ACCESSORY - MOTORIZED OUTSIDE AIR HOOD



CANNON FABRICATION INC

182 GRANITE STREET, SUITE 101, CORONA, CA 92879

PHONE: (951)278-1830 FAX: (951)278-8444 www.canfab.com canfab@canfab.com

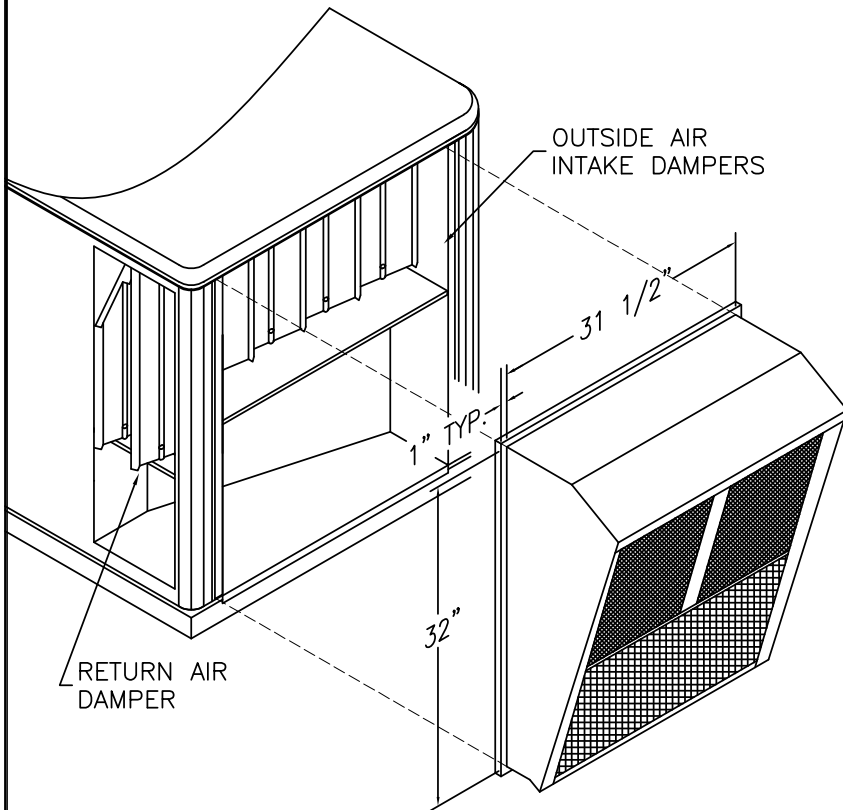
TRANE PRECEDENT 3-5 TON

TSC 036G-060G, YSC 036G-060G, THC 036G,
YHC 036G, TSC 036H-060H, YSC 036H-060H,
THC 036H, YHC 036H, TZC 036F, WHC 036H,
WSC 036H-48H, YZC 036F, GW SC 036H-048H

PART NO: 6139-HEC

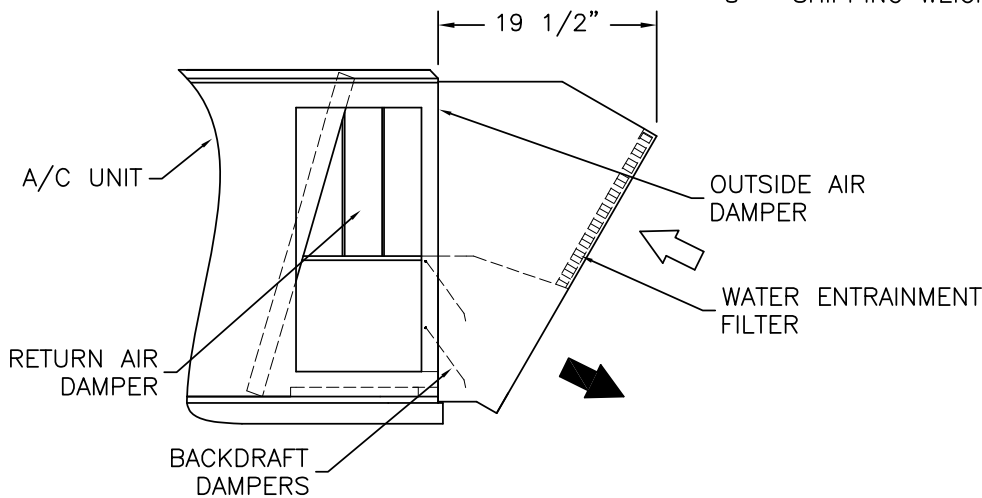
100% BAROMETRIC RELIEF HORIZONTAL DISCHARGE ECONOMIZER

(FUTURE) AC-1.1



FEATURES

- 1 - HEAVY GA. GALVANIZED STEEL CONSTRUCTION.
- 2 - COLOR COORDINATED PAINT FINISH.
- 3 - WATER ENTRAINMENT INTAKE FILTERS.
- 4 - TRANE RELIATEL DRYBULB OR HONEYWELL ELECTRO MECHANICAL DRYBULB CONTROL SYSTEM (SPECIFY WHEN ORDERING)
- 5 - OPTIONAL BELIMO LF24SR-US ACTUATOR AVAILABLE, ADD "B" TO THE END OF PART NUMBER (BELIMO ACTUATOR ONLY, NO OTHER CONTROLS PROVIDED)
- 6 - UTILIZES THE HVAC UNIT FILTER PACKAGE.
- 7 - APPROXIMATELY 75% TO 100% RELIEF OF THE ECONOMIZER INTAKE.
- 8 - SHIPPING WEIGHT 175 LBS.



PROJECT:

DATE:

ENGINEER:

DISTRIBUTOR:

DRAWING NUMBER: