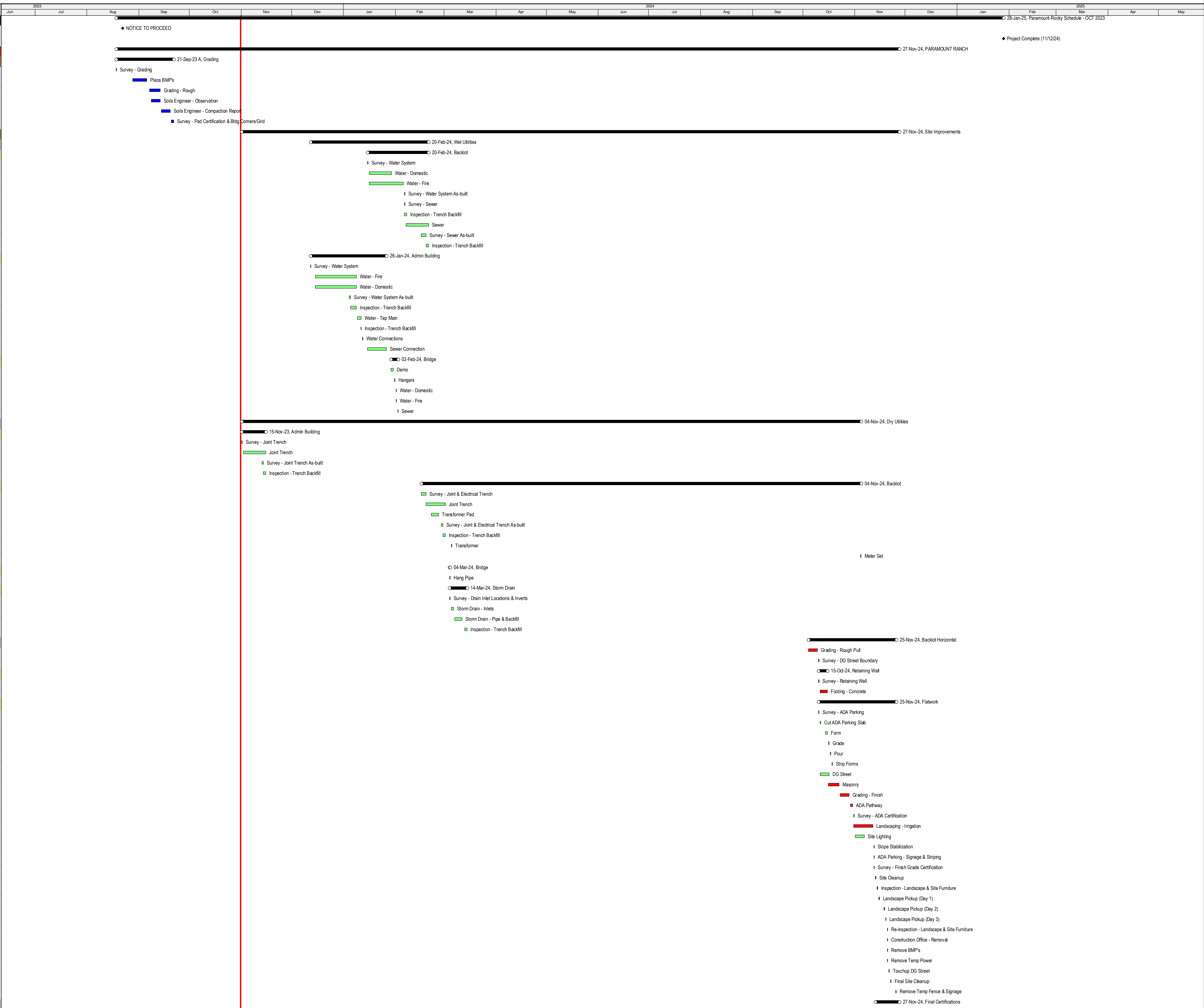




REBUILD PARAMOUNT RANCH & ROCKY OAKS
NATIONAL PARK SERVICE



#	Activity ID	Activity Name	Original Duration	Actual Start	Actual Finish	Start	Finish
1		Paramount-Rocky Schedule - OCT 2023					
2	0001	NOTICE TO PROCEED	0	22-Aug-23		22-Aug-23 A	
3	1556.1	Project Complete (11/12/24)	0				28-Jan-25
4		PARAMOUNT RANCH					
5		Grading					
6	0005	Survey - Grading	1	18-Aug-23	18-Aug-23	18-Aug-23 A	18-Aug-23 A
7	0006	Place BMP's	1	28-Aug-23	05-Sep-23	28-Aug-23 A	05-Sep-23 A
8	0007	Grading - Rough	7	07-Sep-23	13-Sep-23	07-Sep-23 A	13-Sep-23 A
9	0008	Soils Engineer - Observation	6	08-Sep-23	13-Sep-23	08-Sep-23 A	13-Sep-23 A
10	0009	Soils Engineer - Compaction Report	3	14-Sep-23	19-Sep-23	14-Sep-23 A	19-Sep-23 A
11	0010	Survey - Pad Certification & Bldg Corners/Grid	1	20-Sep-23	21-Sep-23	20-Sep-23 A	21-Sep-23 A
12		Site Improvements					
13		Wet Utilities					
14		Backlot					
15	0013	Survey - Water System	1			15-Jan-24	15-Jan-24
16	0014	Water - Domestic	10			16-Jan-24	29-Jan-24
17	0015	Water - Fire	15			16-Jan-24	05-Feb-24
18	0016	Survey - Water System As-built	1			06-Feb-24	06-Feb-24
19	0017	Survey - Sewer	1			06-Feb-24	06-Feb-24
20	0018	Inspection - Trench Backfill	2			06-Feb-24	07-Feb-24
21	0019	Sewer	10			07-Feb-24	20-Feb-24
22	0020	Survey - Sewer As-built	1			16-Feb-24	19-Feb-24
23	0021	Inspection - Trench Backfill	2			19-Feb-24	20-Feb-24
24		Admin Building					
25	0023	Survey - Water System	1			12-Dec-23	12-Dec-23
26	0024	Water - Fire	15			15-Dec-23	08-Jan-24
27	0025	Water - Domestic	15			15-Dec-23	08-Jan-24
28	0026	Survey - Water System As-built	1			04-Jan-24	05-Jan-24
29	0027	Inspection - Trench Backfill	2			05-Jan-24	08-Jan-24
30	0028	Water - Tap Main	3			09-Jan-24	11-Jan-24
31	0029	Inspection - Trench Backfill	1			11-Jan-24	11-Jan-24
32	0030	Water Connections	1			12-Jan-24	12-Jan-24
33	0031	Sewer Connection	10			15-Jan-24	26-Jan-24
34		Bridge					
35	0033	Demo	2			29-Jan-24	30-Jan-24
36	0034	Hangars	1			31-Jan-24	31-Jan-24
37	0035	Water - Domestic	1			01-Feb-24	01-Feb-24
38	0036	Water - Fire	1			01-Feb-24	01-Feb-24
39	0037	Sewer	1			02-Feb-24	02-Feb-24
40		Dry Utilities					
41		Admin Building					
42	0040	Survey - Joint Trench	1			01-Nov-23	01-Nov-23
43	0041	Joint Trench	10			02-Nov-23	15-Nov-23
44	0042	Survey - Joint Trench As-built	1			13-Nov-23	14-Nov-23
45	0043	Inspection - Trench Backfill	2			14-Nov-23	15-Nov-23
46		Backlot					
47	0045	Survey - Joint & Electrical Trench	1			16-Feb-24	19-Feb-24
48	0046	Joint Trench	10			19-Feb-24	01-Mar-24
49	0047	Transformer Pad	3			22-Feb-24	26-Feb-24
50	0048	Survey - Joint & Electrical Trench As-built	1			28-Feb-24	29-Feb-24
51	0049	Inspection - Trench Backfill	2			29-Feb-24	01-Mar-24
52	0050	Transformer	1			05-Mar-24	05-Mar-24
53	0051	Meter Set	1			04-Nov-24	04-Nov-24
54		Bridge					
55	0053	Hang Pipe	1			04-Mar-24	04-Mar-24
56		Storm Drain					
57	0055	Survey - Drain Inlet Locations & Inverts	1			04-Mar-24	04-Mar-24
58	0056	Storm Drain - Inlets	2			05-Mar-24	06-Mar-24
59	0057	Storm Drain - Pipe & Backfill	3			07-Mar-24	11-Mar-24
60	0058	Inspection - Trench Backfill	2			13-Mar-24	14-Mar-24
61		Backlot Horizontal					
62	0060	Grading - Rough Pull	4			04-Oct-24	09-Oct-24
63	0061	Survey - DG Street Boundary	1			10-Oct-24	10-Oct-24
64		Retaining Wall					
65	0063	Survey - Retaining Wall	1			10-Oct-24	10-Oct-24
66	0064	Footing - Concrete	3			11-Oct-24	15-Oct-24
67		Flatwork					
68	0066	Survey - ADA Parking	1			10-Oct-24	10-Oct-24
69	0067	Cut ADA Parking Slab	1			11-Oct-24	11-Oct-24
70	0068	Form	2			14-Oct-24	15-Oct-24
71	0069	Grade	1			16-Oct-24	16-Oct-24
72	0070	Pour	1			17-Oct-24	17-Oct-24
73	0071	Strip Forms	1			18-Oct-24	18-Oct-24
74	0072	DG Street	4			11-Oct-24	16-Oct-24
75	0073	Masonry	5			16-Oct-24	22-Oct-24
76	0074	Grading - Finish	4			23-Oct-24	28-Oct-24
77	0075	ADA Pathway	2			29-Oct-24	30-Oct-24
78	0076	Survey - ADA Certification	1			31-Oct-24	31-Oct-24
79	0077	Landscape - Irrigation	8			31-Oct-24	11-Nov-24
80	0078	Site Lighting	4			01-Nov-24	06-Nov-24
81	0079	Slope Stabilization	1			12-Nov-24	12-Nov-24
82	0080	ADA Parking - Signage & Striping	1			12-Nov-24	12-Nov-24
83	0081	Survey - Finish Grade Certification	1			12-Nov-24	12-Nov-24
84	0082	Site Cleanup	1			13-Nov-24	13-Nov-24
85	0083	Inspection - Landscape & Site Furniture	1			14-Nov-24	14-Nov-24
86	0084	Landscape Pickup (Day 1)	1			15-Nov-24	15-Nov-24
87	0085	Landscape Pickup (Day 2)	1			18-Nov-24	18-Nov-24
88	0086	Landscape Pickup (Day 3)	1			19-Nov-24	19-Nov-24
89	0087	Re-inspection - Landscape & Site Furniture	1			20-Nov-24	20-Nov-24
90	0088	Construction Office - Removal	1			20-Nov-24	20-Nov-24
91	0089	Remove BMP's	1			20-Nov-24	20-Nov-24
92	0090	Remove Temp Power	1			20-Nov-24	20-Nov-24
93	0091	Touchup DG Street	1			21-Nov-24	21-Nov-24
94	0092	Final Site Cleanup	1			22-Nov-24	22-Nov-24
95	0093	Remove Temp Fence & Signage	1			25-Nov-24	25-Nov-24
96		Final Certifications					



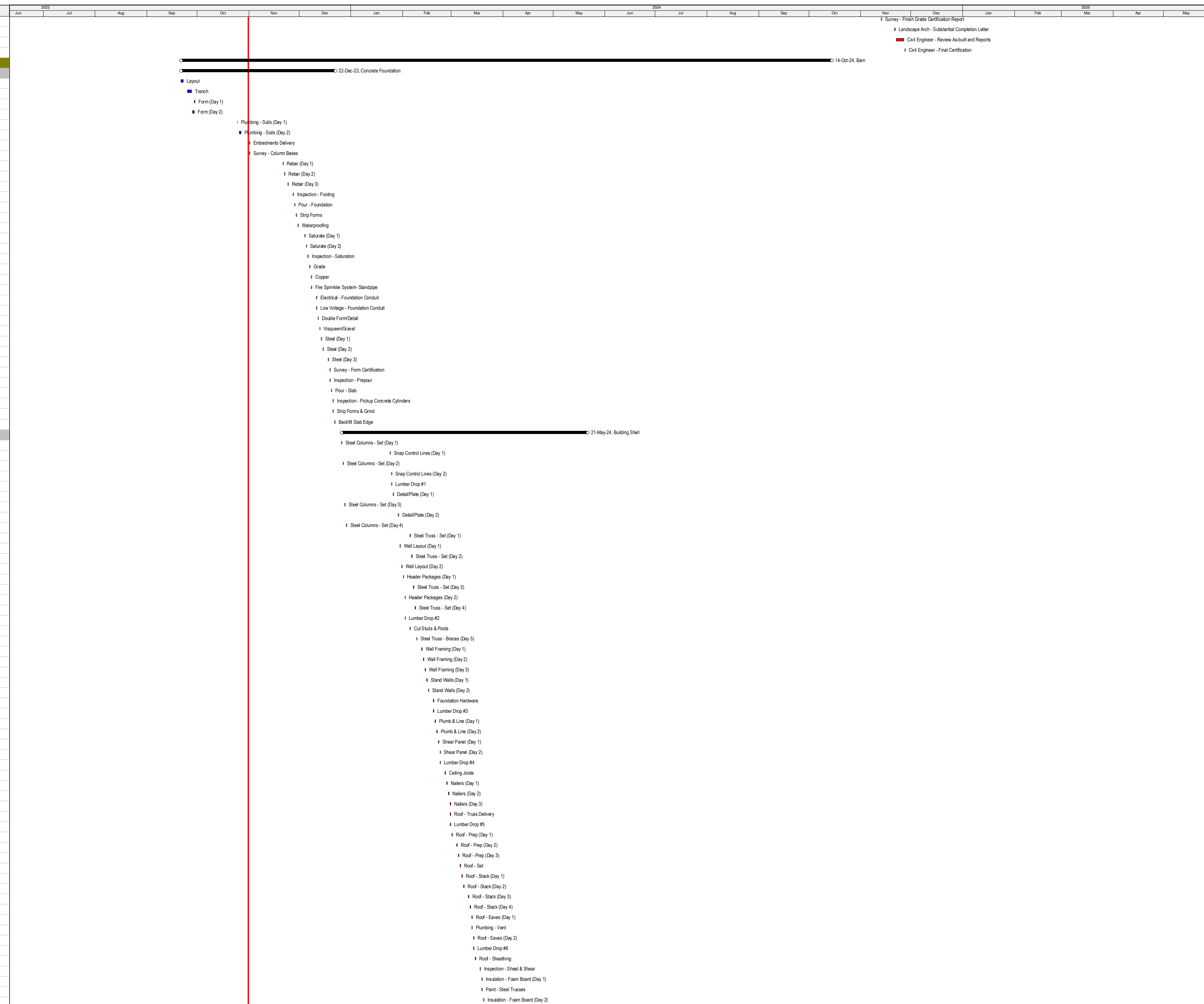
OCTOBER 2023 SCHEDULE UPDATE
ALL



REBUILD PARAMOUNT RANCH & ROCKY OAKS NATIONAL PARK SERVICE



#	Activity ID	Activity Name	Original Duration	Actual Start	Actual Finish	Start	Finish
97	0095	Survey - Finish Grade Certification Report	1			13-Nov-24	13-Nov-24
98	0096	Landscape Arch - Substantial Completion Letter	1			21-Nov-24	21-Nov-24
99	0097	Civil Engineer - Review As-built and Reports	3			22-Nov-24	26-Nov-24
100	0098	Civil Engineer - Final Certification	1			27-Nov-24	27-Nov-24
101	Barn						
102	Concrete Foundation						
103	0101	Layout	1	21-Sep-23	22-Sep-23	21-Sep-23 A	22-Sep-23 A
104	0102	Trench	1	25-Sep-23	27-Sep-23	25-Sep-23 A	27-Sep-23 A
105	0103	Form (Day 1)	1	29-Sep-23	29-Sep-23	29-Sep-23 A	29-Sep-23 A
106	0104	Form (Day 2)	1	28-Sep-23	29-Sep-23	28-Sep-23 A	29-Sep-23 A
107	0105	Plumbing - Sols (Day 1)	1	25-Oct-23	25-Oct-23	25-Oct-23 A	25-Oct-23 A
108	0106	Plumbing - Sols (Day 2)	1	26-Oct-23	27-Oct-23	26-Oct-23 A	27-Oct-23 A
109	0107	Embedments Delivery	1			01-Nov-23	01-Nov-23
110	0108	Survey - Column Bases	1			01-Nov-23	01-Nov-23
111	0109	Rebar (Day 1)	1			21-Nov-23	21-Nov-23
112	0110	Rebar (Day 2)	1			22-Nov-23	22-Nov-23
113	0111	Rebar (Day 3)	1			24-Nov-23	24-Nov-23
114	0112	Inspection - Footing	1			27-Nov-23	27-Nov-23
115	0113	Pour - Foundation	1			28-Nov-23	28-Nov-23
116	0114	Strip Forms	1			29-Nov-23	29-Nov-23
117	0115	Waterproofing	1			30-Nov-23	30-Nov-23
118	0116	Saturate (Day 1)	1			04-Dec-23	04-Dec-23
119	0117	Saturate (Day 2)	1			05-Dec-23	05-Dec-23
120	0118	Inspection - Saturation	1			06-Dec-23	06-Dec-23
121	0119	Grade	1			07-Dec-23	07-Dec-23
122	0120	Copper	1			08-Dec-23	08-Dec-23
123	0121	Fire Sprinkler System- Standpipe	1			08-Dec-23	08-Dec-23
124	0122	Electrical - Foundation Conduit	1			11-Dec-23	11-Dec-23
125	0123	Low Voltage - Foundation Conduit	1			11-Dec-23	11-Dec-23
126	0124	Double Form/Detail	1			12-Dec-23	12-Dec-23
127	0125	Visqueen/Gravel	1			13-Dec-23	13-Dec-23
128	0126	Steel (Day 1)	1			14-Dec-23	14-Dec-23
129	0127	Steel (Day 2)	1			15-Dec-23	15-Dec-23
130	0128	Steel (Day 3)	1			18-Dec-23	18-Dec-23
131	0129	Survey - Form Certification	1			19-Dec-23	19-Dec-23
132	0130	Inspection - Prepour	1			19-Dec-23	19-Dec-23
133	0131	Pour - Slab	1			20-Dec-23	20-Dec-23
134	0132	Inspection - Pickup Concrete Cylinders	1			21-Dec-23	21-Dec-23
135	0133	Strip Forms & Grind	1			21-Dec-23	21-Dec-23
136	0134	Backfill Slab Edge	1			22-Dec-23	22-Dec-23
137	Building Shell						
138	0136	Steel Columns - Set (Day 1)	1			26-Dec-23	26-Dec-23
139	0137	Snap Control Lines (Day 1)	1			24-Jan-24	24-Jan-24
140	0138	Steel Columns - Set (Day 2)	1			27-Dec-23	27-Dec-23
141	0139	Snap Control Lines (Day 2)	1			25-Jan-24	25-Jan-24
142	0140	Lumber Drop #1	1			25-Jan-24	25-Jan-24
143	0141	Detail/Plate (Day 1)	1			26-Jan-24	26-Jan-24
144	0142	Steel Columns - Set (Day 3)	1			28-Dec-23	28-Dec-23
145	0143	Detail/Plate (Day 2)	1			29-Jan-24	29-Jan-24
146	0144	Steel Columns - Set (Day 4)	1			29-Dec-23	29-Dec-23
147	0145	Steel Truss - Set (Day 1)	1			05-Feb-24	05-Feb-24
148	0146	Wall Layout (Day 1)	1			30-Jan-24	30-Jan-24
149	0147	Steel Truss - Set (Day 2)	1			06-Feb-24	06-Feb-24
150	0148	Wall Layout (Day 2)	1			31-Jan-24	31-Jan-24
151	0149	Header Packages (Day 1)	1			01-Feb-24	01-Feb-24
152	0150	Steel Truss - Set (Day 3)	1			07-Feb-24	07-Feb-24
153	0151	Header Packages (Day 2)	1			02-Feb-24	02-Feb-24
154	0152	Steel Truss - Set (Day 4)	1			08-Feb-24	08-Feb-24
155	0153	Lumber Drop #2	1			02-Feb-24	02-Feb-24
156	0154	Cut Studs & Posts	1			05-Feb-24	05-Feb-24
157	0155	Steel Truss - Braces (Day 5)	1			09-Feb-24	09-Feb-24
158	0156	Wall Framing (Day 1)	1			12-Feb-24	12-Feb-24
159	0157	Wall Framing (Day 2)	1			13-Feb-24	13-Feb-24
160	0158	Wall Framing (Day 3)	1			14-Feb-24	14-Feb-24
161	0159	Stand Walls (Day 1)	1			15-Feb-24	15-Feb-24
162	0160	Stand Walls (Day 2)	1			16-Feb-24	16-Feb-24
163	0161	Foundation Hardware	1			19-Feb-24	19-Feb-24
164	0162	Lumber Drop #3	1			19-Feb-24	19-Feb-24
165	0163	Plumb & Line (Day 1)	1			20-Feb-24	20-Feb-24
166	0164	Plumb & Line (Day 2)	1			21-Feb-24	21-Feb-24
167	0165	Shear Panel (Day 1)	1			22-Feb-24	22-Feb-24
168	0166	Shear Panel (Day 2)	1			23-Feb-24	23-Feb-24
169	0167	Lumber Drop #4	1			23-Feb-24	23-Feb-24
170	0168	Ceiling Joists	1			26-Feb-24	26-Feb-24
171	0169	Nalers (Day 1)	1			27-Feb-24	27-Feb-24
172	0170	Nalers (Day 2)	1			28-Feb-24	28-Feb-24
173	0171	Nalers (Day 3)	1			29-Feb-24	29-Feb-24
174	0172	Roof - Truss Delivery	1			29-Feb-24	29-Feb-24
175	0173	Lumber Drop #5	1			29-Feb-24	29-Feb-24
176	0174	Roof - Prep (Day 1)	1			01-Mar-24	01-Mar-24
177	0175	Roof - Prep (Day 2)	1			04-Mar-24	04-Mar-24
178	0176	Roof - Prep (Day 3)	1			05-Mar-24	05-Mar-24
179	0177	Roof - Set	1			06-Mar-24	06-Mar-24
180	0178	Roof - Stack (Day 1)	1			07-Mar-24	07-Mar-24
181	0179	Roof - Stack (Day 2)	1			08-Mar-24	08-Mar-24
182	0180	Roof - Stack (Day 3)	1			11-Mar-24	11-Mar-24
183	0181	Roof - Stack (Day 4)	1			12-Mar-24	12-Mar-24
184	0182	Roof - Eaves (Day 1)	1			13-Mar-24	13-Mar-24
185	0183	Plumbing - Vent	1			13-Mar-24	13-Mar-24
186	0184	Roof - Eaves (Day 2)	1			14-Mar-24	14-Mar-24
187	0185	Lumber Drop #6	1			14-Mar-24	14-Mar-24
188	0186	Roof - Sheathing	1			15-Mar-24	15-Mar-24
189	0187	Inspection - Sheat & Shear	1			18-Mar-24	18-Mar-24
190	0188	Insulation - Foam Board (Day 1)	1			19-Mar-24	19-Mar-24
191	0189	Paint - Steel Trusses	1			19-Mar-24	19-Mar-24
192	0190	Insulation - Foam Board (Day 2)	1			20-Mar-24	20-Mar-24



■ Completed Work ○ Summary
■ Remaining Work
■ Critical Work
◆ Milestone

OCTOBER 2023 SCHEDULE UPDATE ALL

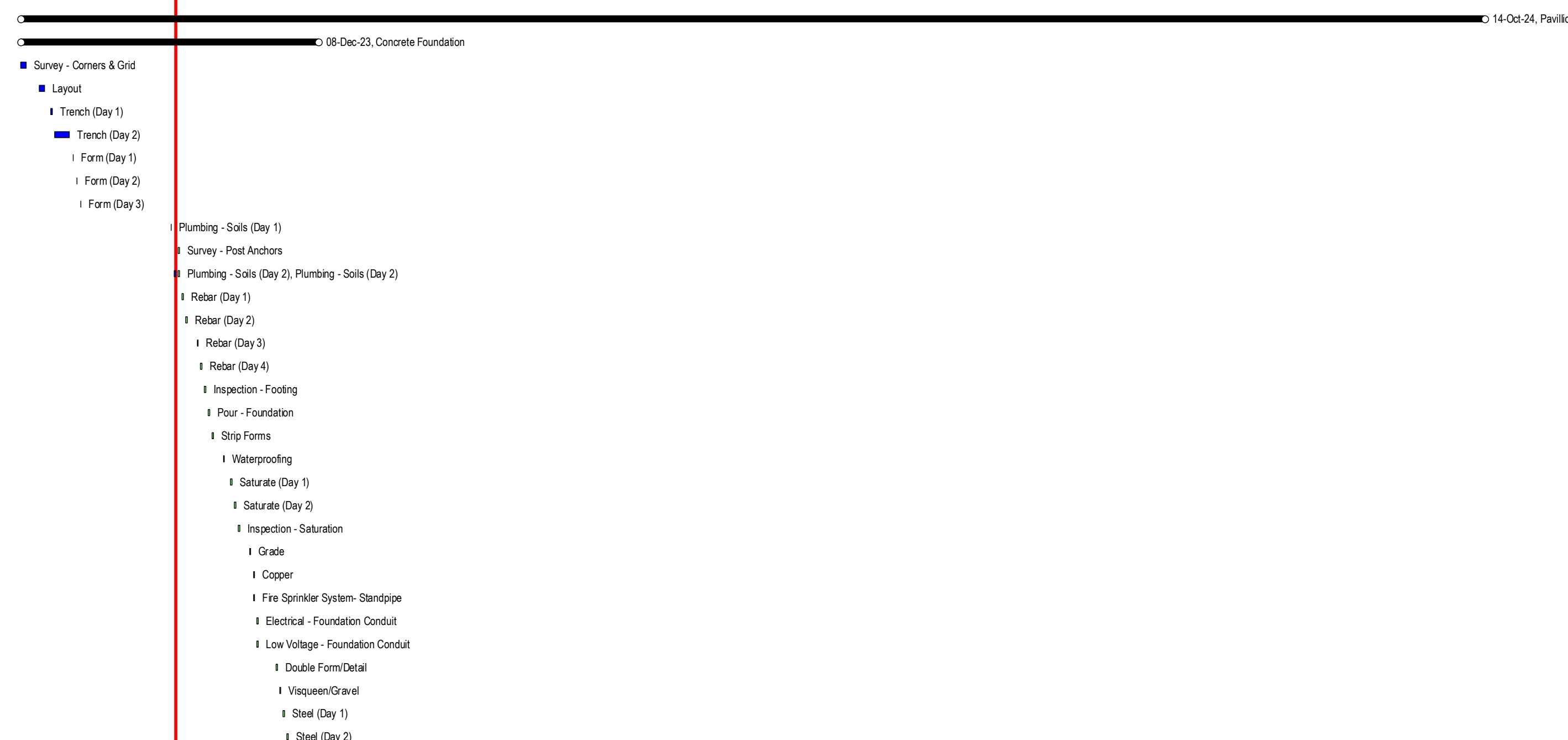
DATA DATE: 31-Oct-23
 PRINT DATE: 15-Nov-23 / 07:16
 PAGE 2 of 17



REBUILD PARAMOUNT RANCH & ROCKY OAKS
NATIONAL PARK SERVICE



Main project schedule table with columns for Activity ID, Activity Name, Original Duration, Actual Start, Actual Finish, Start, Finish, and monthly Gantt bars from 2023 to 2025.



Legend for work status: Completed Work (blue), Remaining Work (green), Critical Work (red), Milestone (black diamond).

OCTOBER 2023 SCHEDULE UPDATE
ALL

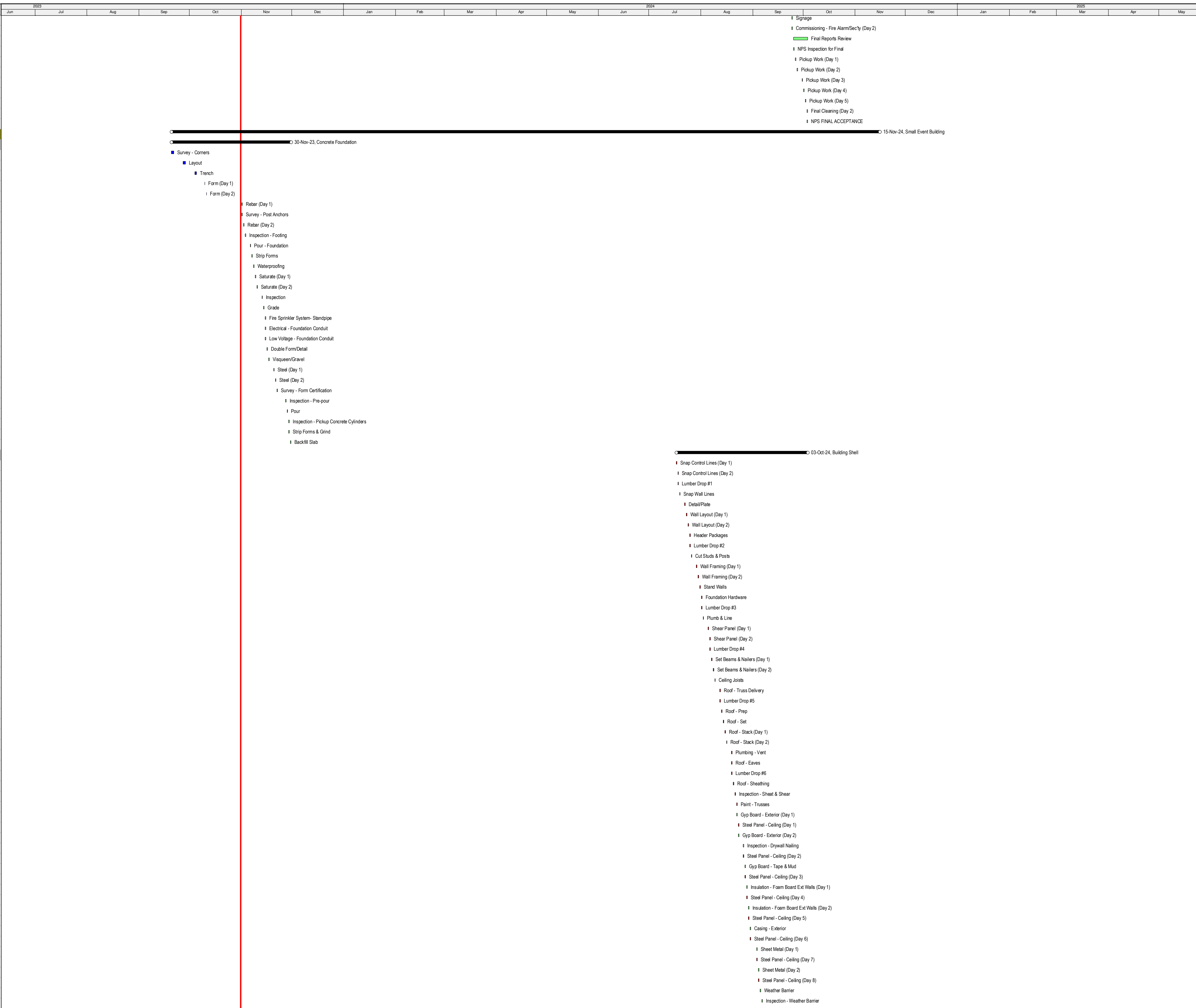
DATA DATE: 31-Oct-23
PRINT DATE: 15-Nov-23 / 07:16
PAGE 6 of 17



REBUILD PARAMOUNT RANCH & ROCKY OAKS
NATIONAL PARK SERVICE



#	Activity ID	Activity Name	Original Duration	Actual Start	Actual Finish	Start	Finish
769	0767	Signage	1			24-Sep-24	24-Sep-24
770	0768	Commissioning - Fire Alarm/Sec'y (Day 2)	1			24-Sep-24	24-Sep-24
771	0769	Final Reports Review	7			25-Sep-24	03-Oct-24
772	0770	NPS Inspection for Final	1			25-Sep-24	25-Sep-24
773	0771	Pickup Work (Day 1)	1			26-Sep-24	26-Sep-24
774	0772	Pickup Work (Day 2)	1			27-Sep-24	27-Sep-24
775	0773	Pickup Work (Day 3)	1			30-Sep-24	30-Sep-24
776	0774	Pickup Work (Day 4)	1			01-Oct-24	01-Oct-24
777	0775	Pickup Work (Day 5)	1			02-Oct-24	02-Oct-24
778	0776	Final Cleaning (Day 2)	1			03-Oct-24	03-Oct-24
779	0777	NPS FINAL ACCEPTANCE	1			03-Oct-24	03-Oct-24
Small Event Building							
Concrete Foundation							
781							
782	0780	Survey - Corners	1	20-Sep-23	21-Sep-23	20-Sep-23 A	21-Sep-23 A
783	0781	Layout	1	27-Sep-23	28-Sep-23	27-Sep-23 A	28-Sep-23 A
784	0782	Trench	1	04-Oct-23	05-Oct-23	04-Oct-23 A	05-Oct-23 A
785	0783	Form (Day 1)	1	10-Oct-23	10-Oct-23	10-Oct-23 A	10-Oct-23 A
786	0784	Form (Day 2)	1	11-Oct-23	11-Oct-23	11-Oct-23 A	11-Oct-23 A
787	0785	Rebar (Day 1)	1			01-Nov-23	01-Nov-23
788	0786	Survey - Post Anchors	1			01-Nov-23	01-Nov-23
789	0787	Rebar (Day 2)	1			02-Nov-23	02-Nov-23
790	0788	Inspection - Footing	1			03-Nov-23	03-Nov-23
791	0789	Pour - Foundation	1			06-Nov-23	06-Nov-23
792	0790	Strip Forms	1			07-Nov-23	07-Nov-23
793	0791	Waterproofing	1			08-Nov-23	08-Nov-23
794	0792	Saturate (Day 1)	1			09-Nov-23	09-Nov-23
795	0793	Saturate (Day 2)	1			10-Nov-23	10-Nov-23
796	0794	Inspection	1			13-Nov-23	13-Nov-23
797	0795	Grade	1			14-Nov-23	14-Nov-23
798	0796	Fire Sprinkler System- Standpipe	1			15-Nov-23	15-Nov-23
799	0797	Electrical - Foundation Conduit	1			15-Nov-23	15-Nov-23
800	0798	Low Voltage - Foundation Conduit	1			15-Nov-23	15-Nov-23
801	0799	Double Form/Detail	1			16-Nov-23	16-Nov-23
802	0800	Visqueen/Gravel	1			17-Nov-23	17-Nov-23
803	0801	Steel (Day 1)	1			20-Nov-23	20-Nov-23
804	0802	Steel (Day 2)	1			21-Nov-23	21-Nov-23
805	0803	Survey - Form Certification	1			22-Nov-23	22-Nov-23
806	0804	Inspection - Pre-pour	1			27-Nov-23	27-Nov-23
807	0805	Pour	1			28-Nov-23	28-Nov-23
808	0806	Inspection - Pickup Concrete Cylinders	1			29-Nov-23	29-Nov-23
809	0807	Strip Forms & Grnd	1			29-Nov-23	29-Nov-23
810	0808	Backfill Slab	1			30-Nov-23	30-Nov-23
Building Shell							
811							
812	0810	Snap Control Lines (Day 1)	1			17-Jul-24	17-Jul-24
813	0811	Snap Control Lines (Day 2)	1			18-Jul-24	18-Jul-24
814	0812	Lumber Drop #1	1			18-Jul-24	18-Jul-24
815	0813	Snap Wall Lines	1			19-Jul-24	19-Jul-24
816	0814	Detail/Plate	1			22-Jul-24	22-Jul-24
817	0815	Wall Layout (Day 1)	1			23-Jul-24	23-Jul-24
818	0816	Wall Layout (Day 2)	1			24-Jul-24	24-Jul-24
819	0817	Header Packages	1			25-Jul-24	25-Jul-24
820	0818	Lumber Drop #2	1			25-Jul-24	25-Jul-24
821	0819	Cut Studs & Posts	1			26-Jul-24	26-Jul-24
822	0820	Wall Framing (Day 1)	1			29-Jul-24	29-Jul-24
823	0821	Wall Framing (Day 2)	1			30-Jul-24	30-Jul-24
824	0822	Stand Walls	1			31-Jul-24	31-Jul-24
825	0823	Foundation Hardware	1			01-Aug-24	01-Aug-24
826	0824	Lumber Drop #3	1			01-Aug-24	01-Aug-24
827	0825	Plumb & Line	1			02-Aug-24	02-Aug-24
828	0826	Shear Panel (Day 1)	1			05-Aug-24	05-Aug-24
829	0827	Shear Panel (Day 2)	1			06-Aug-24	06-Aug-24
830	0828	Lumber Drop #4	1			06-Aug-24	06-Aug-24
831	0829	Set Beams & Nailers (Day 1)	1			07-Aug-24	07-Aug-24
832	0830	Set Beams & Nailers (Day 2)	1			08-Aug-24	08-Aug-24
833	0831	Ceiling Joists	1			09-Aug-24	09-Aug-24
834	0832	Roof - Truss Delivery	1			12-Aug-24	12-Aug-24
835	0833	Lumber Drop #5	1			12-Aug-24	12-Aug-24
836	0834	Roof - Prep	1			13-Aug-24	13-Aug-24
837	0835	Roof - Set	1			14-Aug-24	14-Aug-24
838	0836	Roof - Stack (Day 1)	1			15-Aug-24	15-Aug-24
839	0837	Roof - Stack (Day 2)	1			16-Aug-24	16-Aug-24
840	0838	Plumbing - Vent	1			19-Aug-24	19-Aug-24
841	0839	Roof - Eaves	1			19-Aug-24	19-Aug-24
842	0840	Lumber Drop #6	1			19-Aug-24	19-Aug-24
843	0841	Roof - Sheathing	1			20-Aug-24	20-Aug-24
844	0842	Inspection - Sheat & Shear	1			21-Aug-24	21-Aug-24
845	0843	Paint - Trusses	1			22-Aug-24	22-Aug-24
846	0844	Gyp Board - Exterior (Day 1)	1			22-Aug-24	22-Aug-24
847	0845	Steel Panel - Ceiling (Day 1)	1			23-Aug-24	23-Aug-24
848	0846	Gyp Board - Exterior (Day 2)	1			23-Aug-24	23-Aug-24
849	0847	Inspection - Drywall Nailing	1			26-Aug-24	26-Aug-24
850	0848	Steel Panel - Ceiling (Day 2)	1			26-Aug-24	26-Aug-24
851	0849	Gyp Board - Tape & Mud	1			27-Aug-24	27-Aug-24
852	0850	Steel Panel - Ceiling (Day 3)	1			27-Aug-24	27-Aug-24
853	0851	Insulation - Foam Board Ext Walls (Day 1)	1			28-Aug-24	28-Aug-24
854	0852	Steel Panel - Ceiling (Day 4)	1			28-Aug-24	28-Aug-24
855	0853	Insulation - Foam Board Ext Walls (Day 2)	1			29-Aug-24	29-Aug-24
856	0854	Steel Panel - Ceiling (Day 5)	1			29-Aug-24	29-Aug-24
857	0855	Casing - Exterior	1			30-Aug-24	30-Aug-24
858	0856	Steel Panel - Ceiling (Day 6)	1			30-Aug-24	30-Aug-24
859	0857	Sheet Metal (Day 1)	1			03-Sep-24	03-Sep-24
860	0858	Steel Panel - Ceiling (Day 7)	1			03-Sep-24	03-Sep-24
861	0859	Sheet Metal (Day 2)	1			04-Sep-24	04-Sep-24
862	0860	Steel Panel - Ceiling (Day 8)	1			04-Sep-24	04-Sep-24
863	0861	Weather Barrier	1			05-Sep-24	05-Sep-24
864	0862	Inspection - Weather Barrier	1			06-Sep-24	06-Sep-24



- Completed Work
- Remaining Work
- Critical Work
- ◆ Milestone

OCTOBER 2023 SCHEDULE UPDATE
ALL

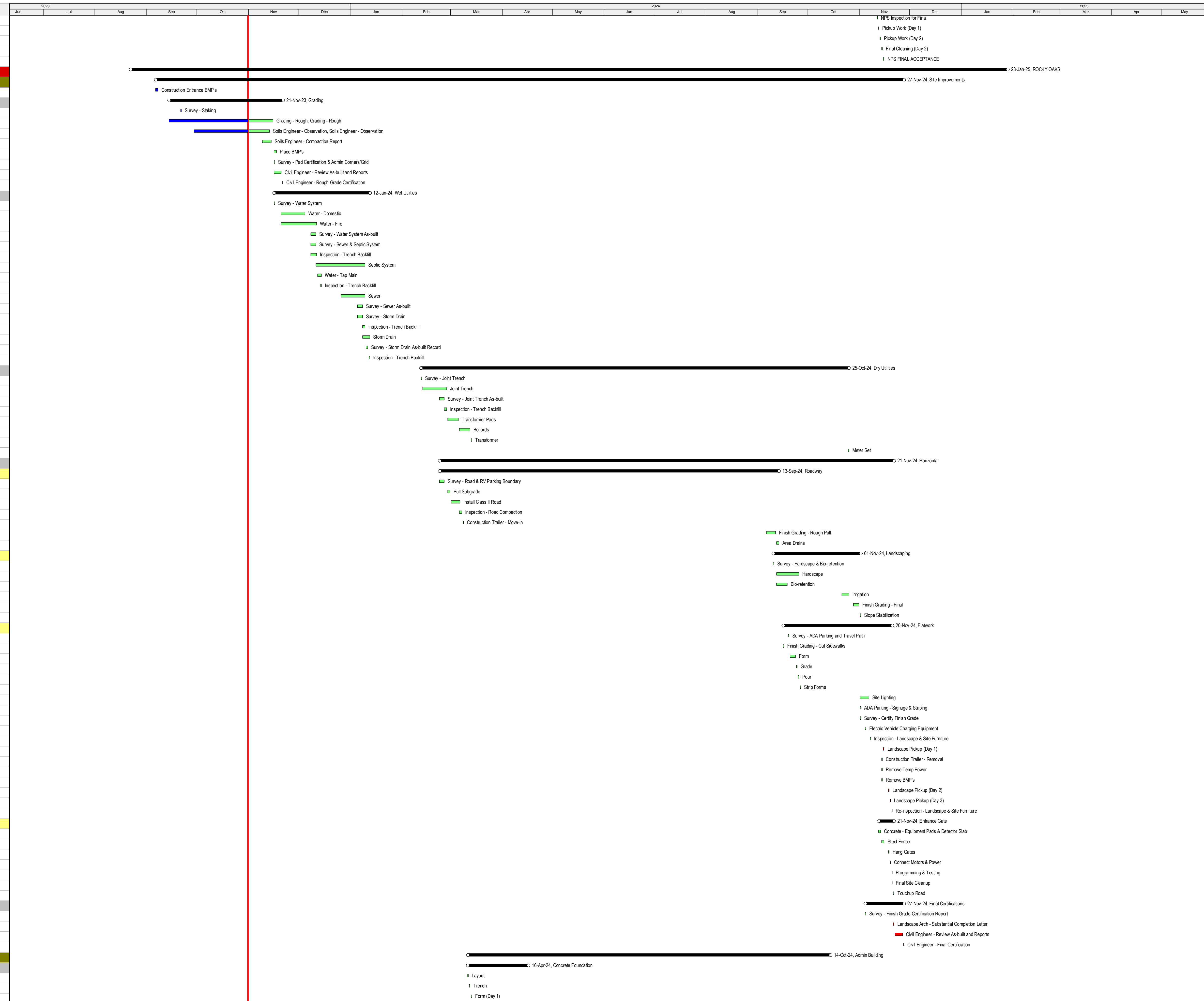
DATA DATE: 31-Oct-23
PRINT DATE: 15-Nov-23 / 07:16
PAGE 9 of 17



REBUILD PARAMOUNT RANCH & ROCKY OAKS NATIONAL PARK SERVICE



#	Activity ID	Activity Name	Original Duration	Actual Start	Actual Finish	Start	Finish
961	0959	NPS Inspection for Final	1			11-Nov-24	11-Nov-24
962	0960	Pickup Work (Day 1)	1			12-Nov-24	12-Nov-24
963	0961	Pickup Work (Day 2)	1			13-Nov-24	13-Nov-24
964	0962	Final Cleaning (Day 2)	1			14-Nov-24	14-Nov-24
965	0963	NPS FINAL ACCEPTANCE	1			15-Nov-24	15-Nov-24
ROCKY OAKS							
Site Improvements							
966	0966	Construction Entrance BMP's	2	06-Sep-23	07-Sep-23	06-Sep-23 A	07-Sep-23 A
Grading							
970	0968	Survey - Staking	1	21-Sep-23	21-Sep-23	21-Sep-23 A	21-Sep-23 A
971	0969	Grading - Rough	10	14-Sep-23		14-Sep-23 A	15-Nov-23
972	0970	Soils Engineer - Observation	8	29-Sep-23		29-Sep-23 A	13-Nov-23
973	0971	Soils Engineer - Compaction Report	3			09-Nov-23	14-Nov-23
974	0972	Place BMP's	2			16-Nov-23	17-Nov-23
975	0973	Survey - Pad Certification & Admin Corners/Grid	1			16-Nov-23	16-Nov-23
976	0974	Civil Engineer - Review As-built and Reports	3			16-Nov-23	20-Nov-23
977	0975	Civil Engineer - Rough Grade Certification	1			21-Nov-23	21-Nov-23
Wet Utilities							
978	0977	Survey - Water System	1			16-Nov-23	16-Nov-23
979	0978	Water - Domestic	10			20-Nov-23	04-Dec-23
980	0979	Water - Fire	15			20-Nov-23	11-Dec-23
981	0980	Survey - Water System As-built	1			08-Dec-23	11-Dec-23
982	0981	Survey - Sewer & Septic System	1			08-Dec-23	11-Dec-23
983	0982	Inspection - Trench Backfill	2			08-Dec-23	11-Dec-23
984	0983	Septic System	20			11-Dec-23	09-Jan-24
985	0984	Water - Tap Main	3			12-Dec-23	14-Dec-23
986	0985	Inspection - Trench Backfill	1			14-Dec-23	14-Dec-23
987	0986	Sewer	10			26-Dec-23	09-Jan-24
988	0987	Survey - Sewer As-built	1			05-Jan-24	08-Jan-24
989	0988	Survey - Storm Drain	1			05-Jan-24	08-Jan-24
990	0989	Inspection - Trench Backfill	2			08-Jan-24	09-Jan-24
991	0990	Storm Drain	5			08-Jan-24	12-Jan-24
992	0991	Survey - Storm Drain As-built Record	1			10-Jan-24	11-Jan-24
993	0992	Inspection - Trench Backfill	1			12-Jan-24	12-Jan-24
Dry Utilities							
994	0994	Survey - Joint Trench	1			12-Feb-24	12-Feb-24
995	0995	Joint Trench	10			13-Feb-24	27-Feb-24
996	0996	Survey - Joint Trench As-built	1			23-Feb-24	26-Feb-24
997	0997	Inspection - Trench Backfill	2			26-Feb-24	27-Feb-24
998	0998	Transformer Pads	5			28-Feb-24	05-Mar-24
999	0999	Bollards	5			06-Mar-24	12-Mar-24
1000	1000	Transformer	1			13-Mar-24	13-Mar-24
1001	1001	Meter Set	1			25-Oct-24	25-Oct-24
Horizontal							
1004	1004	Survey - Road & RV Parking Boundary	1			23-Feb-24	26-Feb-24
1005	1005	Pull Subgrade	2			28-Feb-24	29-Feb-24
1006	1006	Install Class II Road	4			01-Mar-24	06-Mar-24
1007	1007	Inspection - Road Compaction	2			06-Mar-24	07-Mar-24
1008	1008	Construction Trailer - Move-in	1			08-Mar-24	08-Mar-24
1009	1009	Finish Grading - Rough Pull	4			06-Sep-24	11-Sep-24
1010	1010	Area Drains	2			12-Sep-24	13-Sep-24
Landscaping							
1012	1012	Survey - Hardscape & Bio-retention	1			10-Sep-24	10-Sep-24
1013	1013	Hardscape	10			12-Sep-24	25-Sep-24
1014	1014	Bio-retention	5			12-Sep-24	18-Sep-24
1015	1015	Irrigation	5			21-Oct-24	25-Oct-24
1016	1016	Finish Grading - Final	4			28-Oct-24	31-Oct-24
1017	1017	Slope Stabilization	1			01-Nov-24	01-Nov-24
Flatwork							
1019	1019	Survey - ADA Parking and Travel Path	1			19-Sep-24	19-Sep-24
1020	1020	Finish Grading - Cut Sidewalks	1			16-Sep-24	16-Sep-24
1021	1021	Form	2			20-Sep-24	23-Sep-24
1022	1022	Grade	1			24-Sep-24	24-Sep-24
1023	1023	Pour	1			25-Sep-24	25-Sep-24
1024	1024	Strip Forms	1			26-Sep-24	26-Sep-24
1025	1025	Site Lighting	4			01-Nov-24	06-Nov-24
1026	1026	ADA Parking - Signage & Striping	1			01-Nov-24	01-Nov-24
1027	1027	Survey - Certify Finish Grade	1			01-Nov-24	01-Nov-24
1028	1028	Electric Vehicle Charging Equipment	1			04-Nov-24	04-Nov-24
1029	1029	Inspection - Landscape & Site Furniture	1			07-Nov-24	07-Nov-24
1030	1030	Landscape Pickup (Day 1)	1			15-Nov-24	15-Nov-24
1031	1031	Construction Trailer - Removal	1			14-Nov-24	14-Nov-24
1032	1032	Remove Temp Power	1			14-Nov-24	14-Nov-24
1033	1033	Remove BMP's	1			14-Nov-24	14-Nov-24
1034	1034	Landscape Pickup (Day 2)	1			18-Nov-24	18-Nov-24
1035	1035	Landscape Pickup (Day 3)	1			19-Nov-24	19-Nov-24
1036	1036	Re-inspection - Landscape & Site Furniture	1			20-Nov-24	20-Nov-24
Entrance Gate							
1038	1038	Concrete - Equipment Pads & Detector Slab	2			12-Nov-24	13-Nov-24
1039	1039	Steel Fence	2			14-Nov-24	15-Nov-24
1040	1040	Hang Gates	1			18-Nov-24	18-Nov-24
1041	1041	Connect Motors & Power	1			19-Nov-24	19-Nov-24
1042	1042	Programming & Testing	1			20-Nov-24	20-Nov-24
1043	1043	Final Site Cleanup	1			20-Nov-24	20-Nov-24
1044	1044	Touchup Road	1			21-Nov-24	21-Nov-24
Final Certifications							
1046	1046	Survey - Finish Grade Certification Report	1			04-Nov-24	04-Nov-24
1047	1047	Landscape Arch - Substantial Completion Letter	1			21-Nov-24	21-Nov-24
1048	1048	Civil Engineer - Review As-built and Reports	3			22-Nov-24	26-Nov-24
1049	1049	Civil Engineer - Final Certification	1			27-Nov-24	27-Nov-24
Admin Building							
Concrete Foundation							
1052	1052	Layout	1			11-Mar-24	11-Mar-24
1053	1053	Trench	1			12-Mar-24	12-Mar-24
1054	1054	Form (Day 1)	1			13-Mar-24	13-Mar-24



- █ Completed Work
- █ Remaining Work
- █ Critical Work
- ◆ Milestone

OCTOBER 2023 SCHEDULE UPDATE ALL

DATA DATE: 31-Oct-23
PRINT DATE: 15-Nov-23 / 07:16
PAGE 11 of 17



REBUILD PARAMOUNT RANCH & ROCKY OAKS
NATIONAL PARK SERVICE



Main project schedule table with columns for Activity ID, Activity Name, Original Duration, Actual Start, Actual Finish, Start, Finish, and a Gantt chart area showing activity progress from 2023 to 2025.

Legend for activity types: Completed Work, Remaining Work, Critical Work, Milestone.

OCTOBER 2023 SCHEDULE UPDATE
ALL

DATA DATE: 31-Oct-23
PRINT DATE: 15-Nov-23 / 07:16
PAGE 14 of 17



REBUILD PARAMOUNT RANCH & ROCKY OAKS
NATIONAL PARK SERVICE



Main Gantt chart table with columns for months from June 2023 to May 2025. Rows list activities with start/finish dates and progress bars.

Legend for activity types: Completed Work (blue bar), Remaining Work (green bar), Critical Work (red bar), Milestone (diamond symbol).

OCTOBER 2023 SCHEDULE UPDATE
ALL

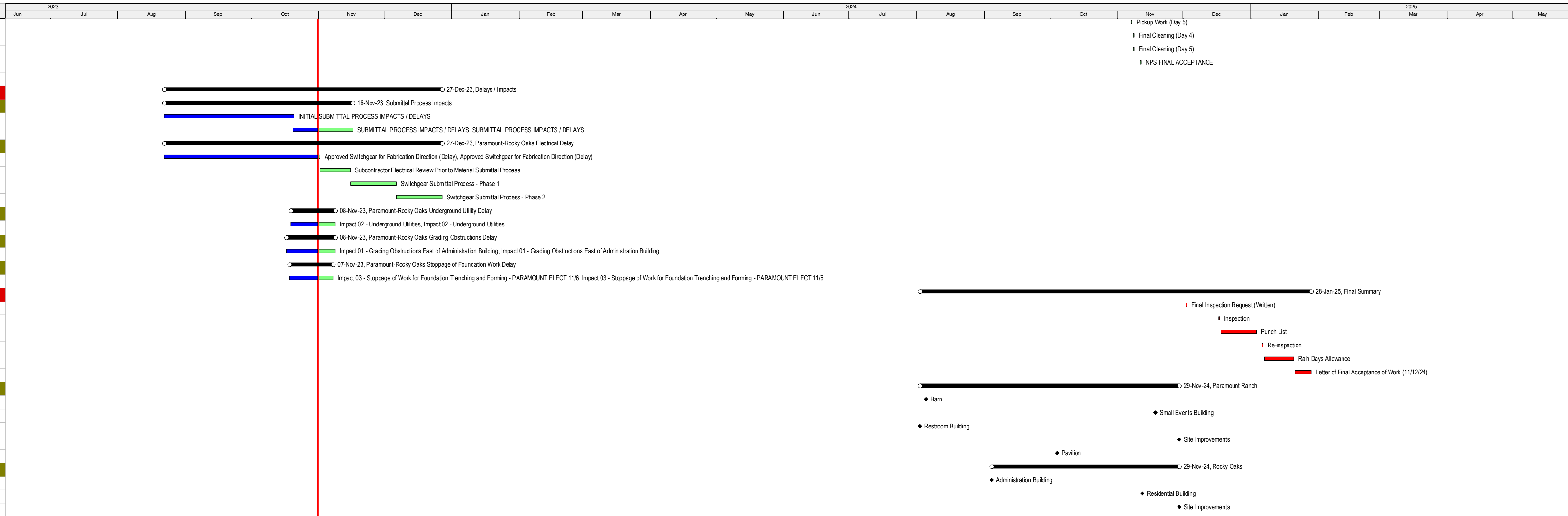
DATA DATE: 31-Oct-23
PRINT DATE: 15-Nov-23 / 07:16
PAGE 16 of 17



REBUILD PARAMOUNT RANCH & ROCKY OAKS NATIONAL PARK SERVICE



#	Activity ID	Activity Name	Original Duration	Actual Start	Actual Finish	Start	Finish
1537	'1535	Pickup Work (Day 5)	1			07-Nov-24	07-Nov-24
1538	'1536	Final Cleaning (Day 4)	1			08-Nov-24	08-Nov-24
1539	'1537	Final Cleaning (Day 5)	1			08-Nov-24	08-Nov-24
1540	'1538	NPS FINAL ACCEPTANCE	1			11-Nov-24	11-Nov-24
1541	'1558	NPS CONTRACT TIMELINE	0	22-Aug-23		22-Aug-23 A	28-Jan-25
1542	Delays / Impacts						
1543	Submittal Process Impacts						
1544	FRAG-SUB-01	INITIAL SUBMITTAL PROCESS IMPACTS / DELAYS	5	22-Aug-23	20-Oct-23	22-Aug-23 A	20-Oct-23 A
1545	FRAG-SUB-02	SUBMITTAL PROCESS IMPACTS / DELAYS	60	20-Oct-23		20-Oct-23 A	16-Nov-23
1546	Paramount-Rocky Oaks Electrical Delay						
1547	FRAG-SG-01	Approved Switchgear for Fabrication Direction (Delay)	5	22-Aug-23		22-Aug-23 A	01-Nov-23
1548	FRAG-SG-02	Subcontractor Electrical Review Prior to Material Submittal Process	14			01-Nov-23	15-Nov-23
1549	FRAG-SG-03	Switchgear Submittal Process - Phase 1	21			15-Nov-23	06-Dec-23
1550	FRAG-SG-04	Switchgear Submittal Process - Phase 2	21			06-Dec-23	27-Dec-23
1551	Paramount-Rocky Oaks Underground Utility Delay						
1552	FRAG-SG-05	Impact 02 - Underground Utilities	34	19-Oct-23		19-Oct-23 A	08-Nov-23
1553	Paramount-Rocky Oaks Grading Obstructions Delay						
1554	FRAG-SG-06	Impact 01 - Grading Obstructions East of Administration Building	17	17-Oct-23		17-Oct-23 A	08-Nov-23
1555	Paramount-Rocky Oaks Stoppage of Foundation Work Delay						
1556	FRAG-SG-07	Impact 03 - Stoppage of Work for Foundation Trenching and Forming - PARAMOUNT ELECT 116	16	18-Oct-23		18-Oct-23 A	07-Nov-23
1557	Final Summary						
1558	'1551	Final Inspection Request (Written)	1			02-Dec-24	02-Dec-24
1559	'1552	Inspection	1			17-Dec-24	17-Dec-24
1560	'1553	Punch List	11			18-Dec-24	03-Jan-25
1561	'1554	Re-inspection	1			06-Jan-25	06-Jan-25
1562	'1555	Rain Days Allowance	10			07-Jan-25	20-Jan-25
1563	'1556	Letter of Final Acceptance of Work (11/12/24)	6			21-Jan-25	28-Jan-25
1564	Paramount Ranch						
1565	'1542	Barn	0			05-Aug-24	
1566	'1543	Small Events Building	0			18-Nov-24	
1567	'1544	Restroom Building	0			02-Aug-24	
1568	'1545	Site Improvements	0			29-Nov-24	
1569	'1546	Pavilion	0			04-Oct-24	
1570	Rocky Oaks						
1571	'1548	Administration Building	0			04-Sep-24	
1572	'1549	Residential Building	0			12-Nov-24	
1573	'1550	Site Improvements	0			29-Nov-24	



█ Completed Work ○ Summary
█ Remaining Work
█ Critical Work
◆ Milestone

OCTOBER 2023 SCHEDULE UPDATE ALL

DATA DATE: 31-Oct-23
 PRINT DATE: 15-Nov-23 / 07:16
 PAGE 17 of 17