

CITY OF PORTERVILLE
CALIFORNIA
ANIMAL SHELTER PROJECT
PROJECT NO: 89-9015-88
BID NO: 21/22-CP1918 (Rebid)

BEGINNING OF ADDENDUM No. 2

Date: August 5, 2022

ITEM No. 1

On Page one (1), first paragraph, of the project manual, change bid opening date and time from August 9, 2022, to **August 17, 2022, at 2:30 p.m.** (This date change is to allow time for the current RFI's to receive adequate responses.)

ITEM No. 2

Sheet E2.0 has been updated and is attached and shall replace the existing Sheet E2.0 in the plans. The update has been bubbled and includes additional data outlets (some are already on the plans) as well as the location of the cable tv outlets. Telephone/data port symbol is found in the legend on sheet E1.0 of the plans. All data port outlets shall have CAT6 cabling ran to them.

END OF ADDENDUM No. 2

/s/ Maria Bemis, Purchasing Agent

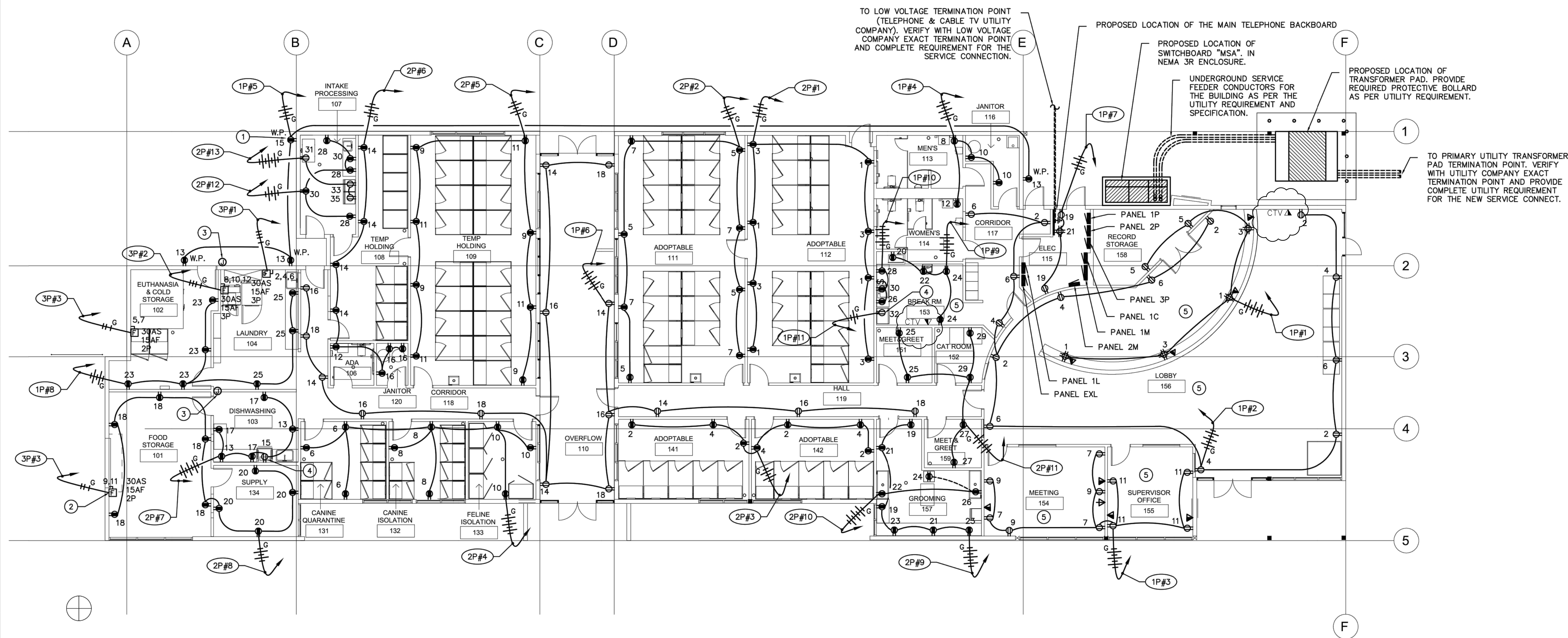
This addendum must be signed and submitted with the sealed bid proposal.
Bid proposals submitted without this sheet will not be considered.

Firm: _____

By: _____

Authorized Signature

Date: _____

[illegible]

E2.0	POWER PLAN LEVEL 01
------	---------------------

SCALE: 1/8"=1'-0"

PANEL 3P:

- 3P#1 - 3P-2,4,6
3/4"C-3#12 THWN CU
+1#12 GND CU
- 3P#2 - 3P-8,10,12
3/4"C-3#12 THWN CU
+1#12 GND CU
- 3P#3 - 3P-5,7
3/4"C-2#12 THWN CU
+1#12 GND CU
- 3P#4 - 3P-9,11
3/4"C-2#12 THWN CU
+1#12 GND CU

PANEL 2P:

- 2P#1 - 2P-1,3
 3/4"C-4#12 THWN CU
 +1#12 GND CU
 2P#2 - 2P-5,7
 3/4"C-4#12 THWN CU
 +1#12 GND CU
 2P#3 - 2P-2,4
 3/4"C-4#12 THWN CU
 +1#12 GND CU
 2P#4 - 2P-6,8,10
 3/4"C-6#12 THWN CU
 +1#12 GND CU
 2P#5 - 2P-9,11
 3/4"C-4#12 THWN CU
 +1#12 GND CU
 2P#6 - 2P-12,14,16
 3/4"C-6#12 THWN CU
 +1#12 GND CU
 2P#7 - 2P-13,15,17
 3/4"C-6#12 THWN CU
 +1#12 GND CU
 2P#8 - 2P-18,20
 3/4"C-4#12 THWN CU
 +1#12 GND CU

PANEL 1P:

- 1P#1 - 1P-1,3,5
3/4"C-6#12 THWN CU
+1#12 GND CU
- 1P#2 - 1P-2,4,6
3/4"C-6#12 THWN CU
+1#12 GND CU
- 1P#3 - 1P-7,9,11
3/4"C-6#12 THWN CU
+1#12 GND CU
- 1P#4 - 1P-8,10,12
3/4"C-6#12 THWN CU
+1#12 GND CU
- 1P#5 - 1P-1,3,5
3/4"C-4#12 THWN CU
+1#12 GND CU
- 1P#6 - 1P-14,16,18
3/4"C-6#12 THWN CU
+1#12 GND CU
- 1P#7 - 1P-19,21
3/4"C-4#12 THWN CU
+1#12 GND CU
- 1P#8 - 1P-23,25
3/4"C-4#12 THWN CU
+1#12 GND CU

- 1P#9 - 1P-20,22,24
3/4"C-6#12 THWN CU
+1#12 GND CU
- 1P#10 - 1P-26,28,30
3/4"C-6#12 THWN CU
+1#12 GND CU
- 1P#11 - 1P-32
3/4"C-2#12 THWN CU
+1#12 GND CU

CTV

SPECIFIC NOTES:

- ① THIS RECEPTACLE OUTLET IS DEDICATED FOR THE POWER SUPPLY OF THE IRRIGATION SYSTEM. CONNECT COMPLETE THE POWER SUPPLY AND CONTROL SYSTEM OF THE IRRIGATION SYSTEM. SEE LANDSCAPE PLAN FOR EXACT LOCATION AND MOUNTING HEIGHT.
- ② CONNECT COMPLETE TO THE POWER SUPPLY AND CONTROL SYSTEM OF THE ROLL-UP DOOR MOTOR. SEE ARCHITECTURAL PLAN FOR EXACT LOCATION AND MOUNTING HEIGHT.
- ③ JUNCTION BOX FOR THE ELECTRONIC ACCESS. PROVIDED REQUIRED CONDUIT CONNECT WITH PULL WIRE UP TO THE LOW VOLTAGE CONTROL PANEL. SEE LOW VOLTAGE CONSULTANT PLAN FOR EXACT LOCATION AND COMPLETE REQUIREMENT AND CONNECTION, TYPICAL.
- ④ RECEPTACLE OUTLET THAT ARE LOCATED NEAR WATER OUTLET AND ARE AT THE BACK OF LARGE EQUIPMENT SHALL BE NON-GFCI TYPE, BUT THE CIRCUIT BREAKER THAT FEED THE CIRCUIT SHALL BE GFCI TYPE, TYPICAL.
- ④ RECEPTACLE OUTLET THAT ARE LOCATED NEAR WATER OUTLET AND ARE AT THE BACK OF LARGE EQUIPMENT SHALL BE NON-GFCI TYPE, BUT THE CIRCUIT BREAKER THAT FEED THE CIRCUIT SHALL BE GFCI TYPE, TYPICAL.
- ⑤ ALL GENERAL RECEPTACLE OUTLETS THAT ARE INSTALLED FROM THE FLOOR LEVEL UP TO A MINIMUM 6 FEET ABOVE THE FLOOR IN THE OFFICE AREAS SHALL BE EQUIPPED WITH AUTOMATIC SHUT-OFF CONTROLLED WITH OCCUPANCY SENSOR OR TIED WITH THE LIGHTING OCCUPANCY SENSOR. AT LEAST ONE CONTROLLED RECEPTACLE SHALL BE INSTALLED WITHIN 6 FEET FROM EACH UNCONTROLLED RECEPTACLE OR A SPLIT-WIRED DUPLEX RECEPTACLE WITH ONE CONTROLLED AND ONE UNCONTROLLED RECEPTACLE SHALL BE INSTALLED. ALL CONTROLLED RECEPTACLES SHALL HAVE A PERMANENT MARKING TO DIFFERENTIATE THEM FROM UNCONTROLLED RECEPTACLE, TYPICAL.