



#	Activity ID	Activity Name	Remaining Duration	Start	Finish	2024												2025											
						Oct	Nov	Dec	Jan	Feb	Mar	Apr	May	Jun	Jul	Aug	Sep	Oct	Nov	Dec	Jan	Feb	Mar	Apr	May	Jun	Jul		
1	CAL POLY TECH PARK - PHASE 2 - JAN 2024					CAL POLY TECH PARK - PHASE 2 - JAN 2024																							
2	MILESTONES					MILESTONES																							
3	107.ADMIN	Building Dried-In	0	28-Jun-24		Building Dried-In																							
4	108.ADMIN	Building Perimeter Sitework Begins	0	12-Aug-24		Building Perimeter Sitework Begins																							
5	109.ADMIN	State Elevator Inspection	5	13-Aug-24	19-Aug-24	State Elevator Inspection																							
6	110.ADMIN	Substantial Completion	0	08-Oct-24		Substantial Completion																							
7	111.ADMIN	GOAL Completion	0	06-Nov-24		GOAL Completion																							
8	DESIGN / PRE-CONSTRUCTION					DESIGN / PRE-CONSTRUCTION																							
9	Procurement/Long Lead Items					Procurement/Long Lead Items																							
10	143.PRO	Electrical (Transformer / MSB)	78	05-Oct-22 A	20-May-24	Electrical (Transformer / MSB)																							
11	Procure / Fab / Long Lead Items					Procure / Fab / Long Lead Items																							
12	233.PRC	Elevator	1	26-Jun-23 A	01-Feb-24	Elevator																							
13	235.PRC	Alum Strfrt / Hdwe / Glazing	1	21-Jul-23 A	01-Feb-24	Alum Strfrt / Hdwe / Glazing																							
14	236.PRC	HVAC Equipment	21	21-Jul-23 A	29-Feb-24	HVAC Equipment																							
15	238.PRC	Misc Elec Equip	1	25-Jul-23 A	01-Feb-24	Misc Elec Equip																							
16	237.PRC	Elec Fixtures	1	25-Jul-23 A	01-Feb-24	Elec Fixtures																							
17	239.PRC	Comm / A-V	1	25-Jul-23 A	01-Feb-24	Comm / A-V																							
18	240.PRC	Panelbds / Meters / Fuses, etc...	53	25-Jul-23 A	15-Apr-24	Panelbds / Meters / Fuses, etc...																							
19	241.PRC	Switchgear	111	25-Jul-23 A	08-Jul-24	Switchgear																							
20	243.PRC	Plumbing Equipment	1	26-Jul-23 A	01-Feb-24	Plumbing Equipment																							
21	244.PRC	Plumbing Fixtures	1	26-Jul-23 A	01-Feb-24	Plumbing Fixtures																							
22	242.PRC	Metal Roof / Wall Panels	1	26-Jul-23 A	01-Feb-24	Metal Roof / Wall Panels																							
23	245.PRC	Movable Wall System	1	23-Aug-23 A	01-Feb-24	Movable Wall System																							
24	246.PRC	Drs / Fms / Hdwe	1	23-Aug-23 A	01-Feb-24	Drs / Fms / Hdwe																							
25	247.PRC	Structural Steel	1	28-Sep-23 A	01-Feb-24	Structural Steel																							
26	CONSTRUCTION					CONSTRUCTION																							
27	Sitework					Sitework																							
28	Utilities					Utilities																							
29	263.STE	Comm to CPTPP1 Bldg	5	31-Oct-23 A	07-Feb-24	Comm to CPTPP1 Bldg																							
30	267.STE	Gas Part 2	5	29-Jul-24	02-Aug-24	Gas Part 2																							
31	264.STE	Water (Irrig)	5	29-Jul-24	02-Aug-24	Water (Irrig)																							
32	268.STE	Sewer Part 2	5	29-Jul-24	02-Aug-24	Sewer Part 2																							

- Remaining Level of Effort
- Remaining Work
- Critical Work
- ◆ Milestone
- Summary

CONSTRUCTION SCHEDULE - JAN 2024
SUBCONTRACTORS - REMAINING

#	Activity ID	Activity Name	Remaining Duration	Start	Finish	2024												2025																							
						Oct	Nov	Dec	Jan	Feb	Mar	Apr	May	Jun	Jul	Aug	Sep	Oct	Nov	Dec	Jan	Feb	Mar	Apr	May	Jun	Jul														
33	269.STE	Storm Drain	5	29-Jul-24	02-Aug-24													■ Storm Drain																							
34	265.STE	Water (Fire)	5	29-Jul-24	02-Aug-24													■ Water (Fire)																							
35	266.STE	Water (Domestic)	5	29-Jul-24	02-Aug-24													■ Water (Domestic)																							
36	North/Upper Parking Area																	○ North/Upper Parking Area																							
37	271.PARK	Demo / Grade / Prep	10	19-Feb-24	01-Mar-24													■ Demo / Grade / Prep																							
38	272.PARK	Extend Storm Drain	2	04-Mar-24	05-Mar-24													■ Extend Storm Drain																							
39	278.PARK	Street Lighting	3	04-Mar-24	06-Mar-24													■ Street Lighting																							
40	274.PARK	Conc Curb, Gutter, Walkway	5	07-Mar-24	13-Mar-24													■ Conc Curb, Gutter, Walkway																							
41	275.PARK	Permeable Pavers / Wheelstops	5	14-Mar-24	20-Mar-24													■ Permeable Pavers / Wheelstops																							
42	276.PARK	Striping / Signage	1	21-Mar-24	21-Mar-24													┆ Striping / Signage																							
43	277.PARK	Remove Fences	1	22-Mar-24	22-Mar-24													┆ Remove Fences																							
44	Post-Structure																													○ Post-Structure											
45	281.STRT	Site Conc CGS	20	05-Aug-24	30-Aug-24																									■ Site Conc CGS											
46	282.STRT	Bike Racks	1	03-Sep-24	03-Sep-24																									┆ Bike Racks											
47	283.STRT	PCC Pavement	15	03-Sep-24	23-Sep-24																									■ PCC Pavement											
48	284.STRT	Landscape and Irrigation	30	03-Sep-24	14-Oct-24																									■ Landscape and Irrigation											
49	285.STRT	AC Paving	5	24-Sep-24	30-Sep-24													■ AC Paving																							
50	Lot H1 Parking Area																	○ Lot H1 Parking Area																							
51	287.PRKLT	Temp Fence / Secure Area	2	01-Apr-24	02-Apr-24													■ Temp Fence / Secure Area																							
52	288.PRKLT	SWPPP / BMP's	1	03-Apr-24	03-Apr-24													┆ SWPPP / BMP's																							
53	289.PRKLT	Demo / Grade / Prep	3	04-Apr-24	08-Apr-24													■ Demo / Grade / Prep																							
54	290.PRKLT	Pedestrian Bridge	15	09-Apr-24	29-Apr-24													■ Pedestrian Bridge																							
55	291.PRKLT	Concrete Stairs, Walkway	5	30-Apr-24	06-May-24													■ Concrete Stairs, Walkway																							
56	292.PRKLT	Handrails	3	07-May-24	09-May-24													■ Handrails																							
57	293.PRKLT	Wheelstops	1	10-May-24	10-May-24													┆ Wheelstops																							
58	294.PRKLT	Striping / Signage	1	13-May-24	13-May-24													┆ Striping / Signage																							
59	Bioretention Basin																	○ Bioretention Basin																							
60	299.1.BASIN	Remove Jobsite Trailer	5	26-Aug-24	30-Aug-24													■ Remove Jobsite Trailer																							
61	296.BASIN	SWPPP / BMP's	2	03-Sep-24	04-Sep-24													┆ SWPPP / BMP's																							
62	297.BASIN	Rough Grading	3	05-Sep-24	09-Sep-24													■ Rough Grading																							
63	298.BASIN	8" SD from Basin to Existing	3	10-Sep-24	12-Sep-24													┆ 8" SD from Basin to Existing																							
64	299.BASIN	Fine Grading	2	13-Sep-24	16-Sep-24													■ Fine Grading																							

○■○ Remaining Level of Effort

■ Remaining Work

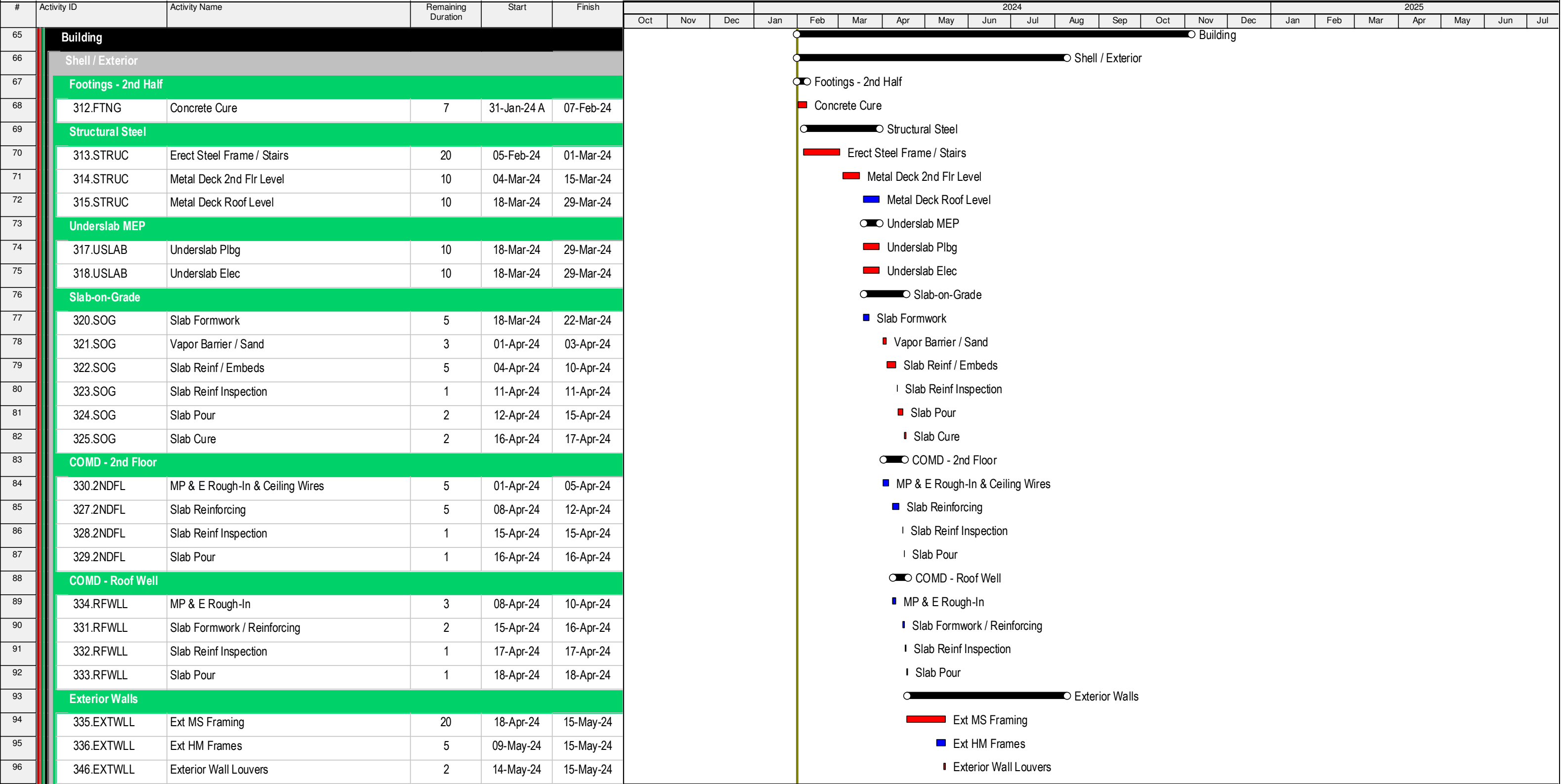
■ Critical Work

◆ Milestone

○■■○ Summary

CONSTRUCTION SCHEDULE - JAN 2024

SUBCONTRACTORS - REMAINING



- Remaining Level of Effort
- Remaining Work
- Critical Work
- Milestone
- Summary

CONSTRUCTION SCHEDULE - JAN 2024
SUBCONTRACTORS - REMAINING



#	Activity ID	Activity Name	Remaining Duration	Start	Finish	2024												2025															
						Oct	Nov	Dec	Jan	Feb	Mar	Apr	May	Jun	Jul	Aug	Sep	Oct	Nov	Dec	Jan	Feb	Mar	Apr	May	Jun	Jul						
97	337.EXTWLL	Ext Gyp Bd	20	16-May-24	13-Jun-24	<div><div></div>Ext Gyp Bd</div>																											
98	339.EXTWLL	Sheet Metal Flashing	10	07-Jun-24	20-Jun-24	<div><div></div>Sheet Metal Flashing</div>																											
99	338.EXTWLL	Rigid Insulation	15	07-Jun-24	27-Jun-24	<div><div></div>Rigid Insulation</div>																											
100	340.EXTWLL	Waterproof Membrane	10	14-Jun-24	27-Jun-24	<div><div></div>Waterproof Membrane</div>																											
101	341.EXTWLL	Storefront Frames	20	21-Jun-24	19-Jul-24	<div><div></div>Storefront Frames</div>																											
102	342.EXTWLL	Metal Wall Panels	20	28-Jun-24	26-Jul-24	<div><div></div>Metal Wall Panels</div>																											
103	343.EXTWLL	Ext HM Drs / Hdwe	5	29-Jul-24	02-Aug-24	<div><div></div>Ext HM Drs / Hdwe</div>																											
104	344.EXTWLL	Win / Strfrt Glazing / Hdwe	10	29-Jul-24	09-Aug-24	<div><div></div>Win / Strfrt Glazing / Hdwe</div>																											
105	345.EXTWLL	Gutters / Downspouts	10	29-Jul-24	09-Aug-24	<div><div></div>Gutters / Downspouts</div>																											
106	Roof System					<div><div></div>Roof System</div>																											
107	352.ROOF	Roof Framing	4	19-Apr-24	24-Apr-24	<div><div></div>Roof Framing</div>																											
108	347.ROOF	Z-Girt Framing	5	25-Apr-24	01-May-24	<div><div></div>Z-Girt Framing</div>																											
109	348.ROOF	Rigid Insulation with Adhered Plywood Decking	5	02-May-24	08-May-24	<div><div></div>Rigid Insulation with Adhered Plywood Decking</div>																											
110	350.ROOF	Metal Roof Underlayment	10	09-May-24	22-May-24	<div><div></div>Metal Roof Underlayment</div>																											
111	351.ROOF	Standing Seam Metal Roof	20	23-May-24	20-Jun-24	<div><div></div>Standing Seam Metal Roof</div>																											
112	Roof Well / MEP					<div><div></div>Roof Well / MEP</div>																											
113	353.RFMEP	Equipment Curbs	1	19-Apr-24	19-Apr-24	<div><div></div>Equipment Curbs</div>																											
114	354.RFMEP	Roof Hatch	1	19-Apr-24	19-Apr-24	<div><div></div>Roof Hatch</div>																											
115	355.RFMEP	PVC Roof System	5	22-Apr-24	26-Apr-24	<div><div></div>PVC Roof System</div>																											
116	356.RFMEP	Electrical Connection to HVAC Units	2	21-May-24	22-May-24	<div><div></div>Electrical Connection to HVAC Units</div>																											
117	358.RFMEP	Set HVAC Units / Ductwork Connection	3	23-May-24	28-May-24	<div><div></div>Set HVAC Units / Ductwork Connection</div>																											
118	357.RFMEP	Connect Plumbing to HVAC Units	2	29-May-24	30-May-24	<div><div></div>Connect Plumbing to HVAC Units</div>																											
119	Elevator					<div><div></div>Elevator</div>																											
120	361.ELEV	Shaft Framing / Backing	8	16-May-24	28-May-24	<div><div></div>Shaft Framing / Backing</div>																											
121	362.ELEV	Shaft Gyp Bd	5	28-Jun-24	05-Jul-24	<div><div></div>Shaft Gyp Bd</div>																											
122	367.ELEV	SFM Inspection	1	08-Jul-24	08-Jul-24	<div><div></div>SFM Inspection</div>																											
123	363.ELEV	Set Guide Rails	5	09-Jul-24	15-Jul-24	<div><div></div>Set Guide Rails</div>																											
124	364.ELEV	Set Jacks	5	16-Jul-24	22-Jul-24	<div><div></div>Set Jacks</div>																											
125	365.ELEV	Construct Cab	10	23-Jul-24	05-Aug-24	<div><div></div>Construct Cab</div>																											
126	366.ELEV	Hall Call / Controls	5	06-Aug-24	12-Aug-24	<div><div></div>Hall Call / Controls</div>																											
127	Interior Buildout					<div><div></div>Interior Buildout</div>																											
128	368.INT	Int MS Framing	25	18-Apr-24	22-May-24	<div><div></div>Int MS Framing</div>																											

- Remaining Level of Effort
- Remaining Work
- Critical Work
- Milestone
- Summary

CONSTRUCTION SCHEDULE - JAN 2024
SUBCONTRACTORS - REMAINING

#	Activity ID	Activity Name	Remaining Duration	Start	Finish	2024												2025															
						Oct	Nov	Dec	Jan	Feb	Mar	Apr	May	Jun	Jul	Aug	Sep	Oct	Nov	Dec	Jan	Feb	Mar	Apr	May	Jun	Jul						
161	400.1STBATH	Finish HVAC	5	07-Jun-24	13-Jun-24	<div>■ Finish HVAC</div>																											
162	401.1STBATH	Finish Plbg	10	07-Jun-24	20-Jun-24	<div>■ Finish Plbg</div>																											
163	402.1STBATH	Finish Elec	5	14-Jun-24	20-Jun-24	<div>■ Finish Elec</div>																											
164	403.1STBATH	Toilet Part / Acc	5	21-Jun-24	27-Jun-24	<div>■ Toilet Part / Acc</div>																											
165	Bathrooms - 2nd Floor					<div>○ Bathrooms - 2nd Floor</div>																											
166	405.2NDBATH	Int MS Framing	5	29-Apr-24	03-May-24	<div>■ Int MS Framing</div>																											
167	406.2NDBATH	Int HM Frames	2	06-May-24	07-May-24	<div>■ Int HM Frames</div>																											
168	407.2NDBATH	Rough HVAC	5	06-May-24	10-May-24	<div>■ Rough HVAC</div>																											
169	408.2NDBATH	Rough Elec	5	06-May-24	10-May-24	<div>■ Rough Elec</div>																											
170	409.2NDBATH	Rough Plbg	10	06-May-24	17-May-24	<div>■ Rough Plbg</div>																											
171	410.2NDBATH	Gypsum Board	5	20-May-24	24-May-24	<div>■ Gypsum Board</div>																											
172	411.2NDBATH	Paint	10	28-May-24	10-Jun-24	<div>■ Paint</div>																											
173	412.2NDBATH	Tile	5	11-Jun-24	17-Jun-24	<div>■ Tile</div>																											
174	413.2NDBATH	Stained / Sealed Concrete	1	18-Jun-24	18-Jun-24	<div>■ Stained / Sealed Concrete</div>																											
175	414.2NDBATH	Finish HVAC	5	18-Jun-24	24-Jun-24	<div>■ Finish HVAC</div>																											
176	415.2NDBATH	Finish Plbg	10	18-Jun-24	01-Jul-24	<div>■ Finish Plbg</div>																											
177	416.2NDBATH	Finish Elec	5	19-Jun-24	25-Jun-24	<div>■ Finish Elec</div>																											
178	417.2NDBATH	Toilet Part / Acc	5	26-Jun-24	02-Jul-24	<div>■ Toilet Part / Acc</div>																											
179	Electrical Room					<div>○ Electrical Room</div>																											
180	419.ELECRM	Set Switchgear	5	09-Jul-24	15-Jul-24	<div>■ Set Switchgear</div>																											
181	420.ELECRM	Set Panels	5	16-Jul-24	22-Jul-24	<div>■ Set Panels</div>																											
182	421.ELECRM	Pull / Terminate Wire	5	23-Jul-24	29-Jul-24	<div>■ Pull / Terminate Wire</div>																											
183	HVAC Startup / TAB / Cx					<div>○ HVAC Startup / TAB / Cx</div>																											
184	423.CX	Initial Startup	5	01-Oct-24	07-Oct-24	<div>■ Initial Startup</div>																											
185	424.CX	Cx Agent	10	08-Oct-24	21-Oct-24	<div>■ Cx Agent</div>																											
186	425.CX	TAB	4	22-Oct-24	25-Oct-24	<div>■ TAB</div>																											
187	426.CX	Fire Alarm Testing	5	28-Oct-24	01-Nov-24	<div>■ Fire Alarm Testing</div>																											
188	427.CX	SFM	2	04-Nov-24	05-Nov-24	<div>■ SFM</div>																											
189	Punchlist					<div>○ Punchlist</div>																											
190	428.PUNCH	Punchlist	10	15-Oct-24	28-Oct-24	<div>■ Punchlist</div>																											