



RANCHO CUCAMONGA FIRE STATION NO. 178
RANCHO CUCAMONGA FIRE PROTECTION DISTRICT



Activity ID	Activity Name	Original Duration	Start	Finish	2024												2025					
					Oct	Nov	Dec	Jan	Feb	Mar	Apr	May	Jun	Jul	Aug	Sep	Oct	Nov	Dec	Jan	Feb	Mar
RANCHO FIRE STATION NO 178 - FEB 2024		581	9-Feb-22 A	30-May-24	○ 30-May-24, RANCHO FIRE STATION NO 178 - FEB 2024																	
ADMINISTRATIVE		577	22-Feb-22 A	30-May-24	○ 30-May-24, ADMINISTRATIVE																	
01.ADMN	NOTICE TO PROCEED	0	22-Feb-22 A																			
02.ADMN	PROJECT COMPLETION (8/22/23)	0		30-May-24*	◆ PROJECT COMPLETION (8/22/23)																	
SUBMITTALS		441	9-Feb-22 A	25-Dec-23 A	○ 25-Dec-23 A, SUBMITTALS																	
DIVISION 03		16	23-Mar-22 A	28-Apr-22 A																		
CAST-IN PLACE CONCRETE		16	23-Mar-22 A	28-Apr-22 A																		
033000-SUB	CAST-IN- PLACE CONCRETE - SUBMIT	1	23-Mar-22 A	23-Mar-22 A																		
033001-REV	CAST-IN- PLACE CONCRETE - REV / APPROVE	15	24-Mar-22 A	28-Apr-22 A																		
DIVISION 04		110	4-Apr-22 A	27-Jul-22 A																		
UNIT MASONRY		110	4-Apr-22 A	27-Jul-22 A																		
042000-SUB	UNIT MASONRY - SUBMIT	1	4-Apr-22 A	4-Apr-22 A																		
042000-REV	UNIT MASONRY - REV / APPROVE	15	5-Apr-22 A	7-Jun-22 A																		
042000-FAB	UNIT MASONRY - FAB / DEL	35	8-Jun-22 A	27-Jul-22 A																		
DIVISION 05		315	25-May-22 A	29-Nov-23 A	○ 29-Nov-23 A, DIVISION 05																	
STRUCTURAL STEEL FRAMING		98	25-May-22 A	21-Jul-22 A																		
051200-SUB	STRUCTURAL STEEL FRAMING - SUBMIT	65	25-May-22 A	25-May-22 A																		
051200-REV	STRUCTURAL STEEL FRAMING - REV / APPROVE	15	26-May-22 A	22-Jun-22 A																		
051200-FAB	STRUCTURAL STEEL FRAMING - FAB / DEL	20	23-Jun-22 A	21-Jul-22 A																		
STEEL DECKING		193	31-May-22 A	25-Oct-22 A																		
053100-SUB	STEEL DECKING - SUBMIT	1	31-May-22 A	2-Jun-22 A																		
053100-REV	STEEL DECKING - REV / APPROVE	15	3-Jun-22 A	1-Jul-22 A																		
053100-FAB	STEEL DECKING - FAB / DEL	80	5-Jul-22 A	25-Oct-22 A																		
COLD-FORMED METAL FRAMING		85	27-May-22 A	5-Jul-22 A																		
054000-SUB	COLD-FORMED METAL FRAMING - SUBMIT	1	27-May-22 A	27-May-22 A																		
054000-REV	COLD-FORMED METAL FRAMING - REV / APPROVE	15	28-May-22 A	7-Jun-22 A																		
054000-FAB	COLD-FORMED METAL FRAMING - FAB / DEL	10	9-Jun-22 A	5-Jul-22 A																		
SUREBOARD STRUCTURAL SHEATHING		31	3-Jun-22 A	1-Jul-22 A																		
054600-SUB	SUREBOARD STRUCTURAL SHEATHING - SUBMIT	1	3-Jun-22 A	3-Jun-22 A																		
054600-REV	SUREBOARD STRUCTURAL SHEATHING - REV / APPROVE	15	4-Jun-22 A	8-Jun-22 A																		
054600-FAB	SUREBOARD STRUCTURAL SHEATHING - FAB / DEL	15	9-Jun-22 A	1-Jul-22 A																		
METAL FABRICATIONS		53	2-Jun-22 A	1-Sep-22 A																		
055000-SUB	METAL FABRICATIONS - SUBMIT	1	2-Jun-22 A	2-Jun-22 A																		
055000-REV	METAL FABRICATIONS - REV / APPROVE	15	3-Jun-22 A	24-Jun-22 A																		
055000-FAB	METAL FABRICATIONS - FAB / DEL	10	24-Jun-22 A	1-Sep-22 A																		
METAL STAIRS		58	2-Jun-22 A	1-Sep-22 A																		

Completed Work

Remaining Work

Critical Work

Milestone

FEB 2024 SCHEDULE UPDATE
SUBCONTRACTOR - ALL



RANCHO CUCAMONGA FIRE STATION NO. 178
RANCHO CUCAMONGA FIRE PROTECTION DISTRICT



Activity ID	Activity Name	Original Duration	Start	Finish	2024												2025					
					Oct	Nov	Dec	Jan	Feb	Mar	Apr	May	Jun	Jul	Aug	Sep	Oct	Nov	Dec	Jan	Feb	Mar
055100-SUB	METAL STAIRS - SUBMIT	1	2-Jun-22 A	2-Jun-22 A																		
055100-REV	METAL STAIRS - REV / APPROVE	15	3-Jun-22 A	24-Jun-22 A																		
055100-FAB	METAL STAIRS - FAB / DEL	15	24-Jun-22 A	1-Sep-22 A																		
PRE-ENGINEERED METAL STAIRS		15	1-Aug-22 A	1-Aug-22 A																		
055110-SUB	PRE-ENGINEERED METAL STAIRS - SUBMIT	1	1-Aug-22 A	1-Aug-22 A																		
055110-REV	PRE-ENGINEERED METAL STAIRS - REV / APPROVE	15	1-Aug-22 A	1-Aug-22 A																		
055110-FAB	PRE-ENGINEERED METAL STAIRS - FAB / DEL	15	1-Aug-22 A	1-Aug-22 A																		
LADDERS		53	2-Jun-22 A	29-Nov-23 A																		
055134-SUB	LADDERS - SUBMIT	1	2-Jun-22 A	2-Jun-22 A																		
055134-REV	LADDERS - REV / APPROVE	15	3-Jun-22 A	24-Jun-22 A																		
055134-FAB	LADDERS - FAB / DEL	10	24-Jun-22 A	29-Nov-23 A																		
PIPE AND TUBE RAILINGS		53	2-Jun-22 A	1-Sep-22 A																		
055213-SUB	PIPE AND TUBE RAILINGS - SUBMIT	1	2-Jun-22 A	2-Jun-22 A																		
055214-REV	PIPE AND TUBE RAILINGS - REV / APPROVE	15	3-Jun-22 A	24-Jun-22 A																		
055215-FAB	PIPE AND TUBE RAILINGS - FAB / DEL	10	24-Jun-22 A	1-Sep-22 A																		
DECORATIVE METAL RAILINGS		76	1-Feb-23 A	7-Aug-23 A																		
057300-SUB	DECORATIVE METAL RAILINGS - SUBMIT	1	1-Feb-23 A	1-Feb-23 A																		
057300-REV	DECORATIVE METAL RAILINGS - REV / APPROVE	15	1-Feb-23 A	8-Feb-23 A																		
057300-FAB	DECORATIVE METAL RAILINGS - FAB / DEL	60	8-Feb-23 A	7-Aug-23 A																		
DECORATIVE METAL PANELS		51	8-Dec-22 A	5-Sep-23 A																		
057829-SUB	DECORATIVE METAL PANELS - SUBMIT	1	8-Dec-22 A	8-Dec-22 A																		
057830-REV	DECORATIVE METAL PANELS - REV / APPROVE	15	8-Dec-22 A	18-Jan-23 A																		
057831-FAB	DECORATIVE METAL PANELS - FAB / DEL	50	19-Jan-23 A	5-Sep-23 A																		
DIVISION 06		228	11-Feb-22 A	15-Nov-23 A	○ 15-Nov-23 A, DIVISION 06																	
WOOD CASEWORK		228	11-Feb-22 A	15-Nov-23 A	○ 15-Nov-23 A, WOOD CASEWORK																	
064100-SUB	ARCHITECTURAL WOOD CASEWORK - SUBMIT	1	11-Feb-22 A	11-Feb-22 A																		
064100-REV	ARCHITECTURAL WOOD CASEWORK - REV / APPROVE	15	12-Feb-22 A	10-Jun-22 A																		
064100-FAB	ARCHITECTURAL WOOD CASEWORK - FAB / DEL	150	11-Jun-22 A	15-Nov-23 A																		
DIVISION 07		208	4-May-22 A	20-Dec-23 A																		
SOLID PHENOLIC CORE WALL PANELS		193	4-May-22 A	7-Aug-23 A																		
074245-SUB	SOLID PHENOLIC CORE WALL PANELS - SUBMIT	1	4-May-22 A	4-May-22 A																		
074245-REV	SOLID PHENOLIC CORE WALL PANELS - REV / APPROVE	15	5-May-22 A	18-Jul-22 A																		
074245-FAB	SOLID PHENOLIC CORE WALL PANELS - FAB / DEL	80	19-Jul-22 A	7-Aug-23 A																		
TPO ROOFING		25	14-Sep-22 A	21-Jun-23 A																		
075423-SUB	TPO ROOFING - SUBMIT	1	14-Sep-22 A	14-Sep-22 A																		
075423-REV	TPO ROOFING - REV / APPROVE	15	15-Sep-22 A	4-Oct-22 A																		

Completed Work

Remaining Work

Critical Work

Milestone

Summary

FEB 2024 SCHEDULE UPDATE
SUBCONTRACTOR - ALL



RANCHO CUCAMONGA FIRE STATION NO. 178

RANCHO CUCAMONGA FIRE PROTECTION DISTRICT



Activity ID	Activity Name	Original Duration	Start	Finish	2024												2025					
					Oct	Nov	Dec	Jan	Feb	Mar	Apr	May	Jun	Jul	Aug	Sep	Oct	Nov	Dec	Jan	Feb	Mar
075423-FAB	TPO ROOFING - FAB / DEL	1	5-Oct-22 A	21-Jun-23 A	METAL FLASHING AND TRIM																	
SHEET METAL FLASHING AND TRIM		96	14-Jul-22 A	7-Aug-23 A																		
076200-SUB	SHEET METAL FLASHING AND TRIM - SUBMIT	1	14-Jul-22 A	14-Jul-22 A																		
076200-REV	SHEET METAL FLASHING AND TRIM - REV / APPROVE	15	15-Jul-22 A	6-Nov-22 A																		
076200-FAB	SHEET METAL FLASHING AND TRIM - FAB / DEL	30	7-Nov-22 A	7-Aug-23 A																		
ROOF HATCHES		36	28-Jun-22 A	28-Jul-22 A																		
077233-SUB	ROOF HATCHES - SUBMIT	1	28-Jun-22 A	28-Jun-22 A																		
077233-REV	ROOF HATCHES - REV / APPROVE	15	28-Jun-22 A	29-Jun-22 A																		
077233-FAB	ROOF HATCHES - FAB / DEL	20	30-Jun-22 A	28-Jul-22 A	20-Dec-23 A, PEDESTAL PAVERS																	
PEDESTAL PAVERS		43	27-Sep-22 A	20-Dec-23 A																		
077600-SUB	PEDESTAL PAVERS - SUBMIT	1	27-Sep-22 A	27-Sep-22 A																		
077601-REV	PEDESTAL PAVERS - REV / APPROVE	15	27-Sep-22 A	1-Nov-22 A																		
077602-FAB	PEDESTAL PAVERS - FAB / DEL	0	2-Nov-22 A	20-Dec-23 A	25-Dec-23 A, DIVISION 08																	
DIVISION 08		357	16-Mar-22 A	25-Dec-23 A																		
STANDARD HOLLOW METAL FRAMES		84	27-Apr-22 A	14-Feb-23 A	ARD HOLLOW METAL DOORS																	
081213-SUB	STANDARD HOLLOW METAL FRAMES - SUBMIT	1	27-Apr-22 A	27-Apr-22 A																		
081213-REV	STANDARD HOLLOW METAL FRAMES - REV / APPROVE	15	27-Apr-22 A	28-Sep-22 A																		
081213-FAB	STANDARD HOLLOW METAL FRAMES - FAB / DEL	40	29-Sep-22 A	14-Feb-23 A																		
SPECIALITY METAL FRAMES		36	13-Apr-22 A	1-Jul-22 A	DOORS																	
081215-SUB	SPECIALTY METAL FRAMES - SUBMIT	1	13-Apr-22 A	13-Apr-22 A																		
081215-REV	SPECIALTY METAL FRAMES - REV / APPROVE	15	14-Apr-22 A	5-May-22 A																		
081215-FAB	SPECIALTY METAL FRAMES - FAB / DEL	20	6-May-22 A	1-Jul-22 A																		
STANDARD HOLLOW METAL DOORS		196	26-Apr-22 A	7-Aug-23 A	EAD COILING DOORS																	
081313-SUB	STANDARD HOLLOW METAL DOORS - SUBMIT	1	26-Apr-22 A	26-Apr-22 A																		
081313-REV	STANDARD HOLLOW METAL DOORS - REV / APPROVE	15	27-Apr-22 A	28-Sep-22 A																		
081313-FAB	STANDARD HOLLOW METAL DOORS - FAB / DEL	40	29-Sep-22 A	7-Aug-23 A																		
WOOD DOORS		217	18-Apr-22 A	7-Aug-23 A	LUMINUM FRAMED ENTRANCES & STOREFRONTS																	
081416-SUB	FLUSH WOOD DOORS - SUBMIT	1	18-Apr-22 A	18-Apr-22 A																		
081416-REV	FLUSH WOOD DOORS - REV / APPROVE	15	19-Apr-22 A	4-Oct-22 A																		
081416-FAB	FLUSH WOOD DOORS - FAB / DEL	60	5-Oct-22 A	7-Aug-23 A																		
OVERHEAD COILING DOORS		238	16-Mar-22 A	7-Aug-23 A																		
083323-SUB	OVERHEAD COILING DOORS - SUBMIT	1	16-Mar-22 A	16-Mar-22 A																		
083323-REV	OVERHEAD COILING DOORS - REV / APPROVE	15	17-Mar-22 A	15-Nov-22 A																		
083323-FAB	OVERHEAD COILING DOORS - FAB / DEL	60	16-Nov-22 A	7-Aug-23 A																		
ALUMINUM FRAMED ENTRANCES & STOREFRONTS		214	19-Aug-22 A	21-Aug-23 A																		
084113-SUB	ALUMINUM-FRAMED ENTRANCES AND STOREFRONTS - SUBMIT	1	19-Aug-22 A	19-Aug-22 A																		

Completed Work

Remaining Work

Critical Work

Milestone

FEB 2024 SCHEDULE UPDATE

SUBCONTRACTOR - ALL



RANCHO CUCAMONGA FIRE STATION NO. 178

RANCHO CUCAMONGA FIRE PROTECTION DISTRICT



Activity ID	Activity Name	Original Duration	Start	Finish	2024												2025						
					Oct	Nov	Dec	Jan	Feb	Mar	Apr	May	Jun	Jul	Aug	Sep	Oct	Nov	Dec	Jan	Feb	Mar	
084113-REV	ALUMINUM-FRAMED ENTRANCES AND STOREFRONTS - REV / APPROVE	15	19-Aug-22 A	23-Jun-23 A																			
084113-FAB	ALUMINUM-FRAMED ENTRANCES AND STOREFRONTS - FAB / DEL	1	24-Jun-23 A	21-Aug-23 A																			
METAL CLAD WOOD WINDOWS		220	11-May-22 A	14-Dec-23 A	○ 14-Dec-23 A, METAL CLAD WOOD WINDOWS																		
085214-SUB	METAL-CLAD WOOD WINDOWS - SUBMIT	1	11-May-22 A	11-May-22 A																			
085214-REV	METAL-CLAD WOOD WINDOWS - REV / APPROVE	15	12-May-22 A	6-Jan-23 A																			
085214-FAB	METAL-CLAD WOOD WINDOWS - FAB / DEL	1	6-Jan-23 A	14-Dec-23 A																			
PASS WINDOWS		45	19-Aug-22 A	13-Oct-23 A	○ 13-Oct-23 A, PASS WINDOWS																		
085619-SUB	PASS WINDOWS - SUBMIT	1	19-Aug-22 A	19-Aug-22 A																			
085619-REV	PASS WINDOWS - REV / APPROVE	15	19-Aug-22 A	13-Oct-22 A																			
085619-FAB	PASS WINDOWS - FAB / DEL	0	14-Oct-22 A	13-Oct-23 A																			
DOORS HARDWARE		16	20-Apr-22 A	18-Oct-22 A																			
087100-SUB	DOOR HARDWARE - SUBMIT	1	20-Apr-22 A	20-Apr-22 A																			
087100-REV	DOOR HARDWARE - REV / APPROVE	15	21-Apr-22 A	18-Oct-22 A																			
GLASS GLAZING		201	1-Oct-22 A	13-Oct-23 A	○ 13-Oct-23 A, GLASS GLAZING																		
088100-SUB	GLASS GLAZING - SUBMIT	1	1-Oct-22 A	1-Oct-22 A																			
088100-REV	GLASS GLAZING - REV / APPROVE	15	1-Oct-22 A	10-Oct-22 A																			
088100-FAB	GLASS GLAZING - FAB / DEL	10	10-Oct-22 A	13-Oct-23 A																			
FIRE-RESISTANT GLAZING		233	19-Aug-22 A	25-Dec-23 A	○ 25-Dec-23 A, FIRE-RESISTANT GLAZING																		
088813-SUB	FIRE-RESISTANT GLAZING - SUBMIT	1	19-Aug-22 A	19-Aug-22 A																			
088813-REV	FIRE-RESISTANT GLAZING - REV / APPROVE	15	19-Aug-22 A	24-Jun-23 A																			
088813-FAB	FIRE-RESISTANT GLAZING - FAB / DEL	20	24-Jun-23 A	25-Dec-23 A																			
FIXED LOUVERS		129	27-May-22 A	8-Sep-22 A																			
089113-SUB	FIXED LOUVERS - SUBMIT	1	27-May-22 A	27-May-22 A																			
089113-REV	FIXED LOUVERS - REV / APPROVE	15	28-May-22 A	2-Jun-22 A																			
089113-FAB	FIXED LOUVERS - FAB / DEL	55	22-Jun-22 A	8-Sep-22 A																			
DIVISION 09		441	11-Mar-22 A	20-Oct-23 A	○ 20-Oct-23 A, DIVISION 09																		
TILING		116	11-Mar-22 A	16-Sep-22 A																			
093000-SUB	TILING - SUBMIT	1	11-Mar-22 A	11-Mar-22 A																			
093000-REV	TILING - REV / APPROVE	15	12-Mar-22 A	26-Apr-22 A																			
093000-FAB	TILING - FAB / DEL	100	27-Apr-22 A	16-Sep-22 A																			
ACOUSTICAL PANEL CEILINGS		79	14-Jul-22 A	22-Sep-22 A																			
095113-SUB	ACOUSTICAL PANEL CEILINGS - SUBMIT	1	14-Jul-22 A	14-Jul-22 A																			
095113-FAB	ACOUSTICAL PANEL CEILINGS - REV / APPROVE	10	15-Jul-22 A	28-Jul-22 A																			
095113-REV	ACOUSTICAL PANEL CEILINGS - FAB / DEL	15	29-Jul-22 A	22-Sep-22 A																			
ACGI WOOD CEILINGS		126	3-Aug-22 A	20-Oct-23 A	○ 20-Oct-23 A, ACGI WOOD CEILINGS																		
095429-SUB	ACGI WOOD CEILINGS - SUBMIT	1	3-Aug-22 A	3-Aug-22 A																			

Completed Work

Remaining Work

Critical Work

Milestone

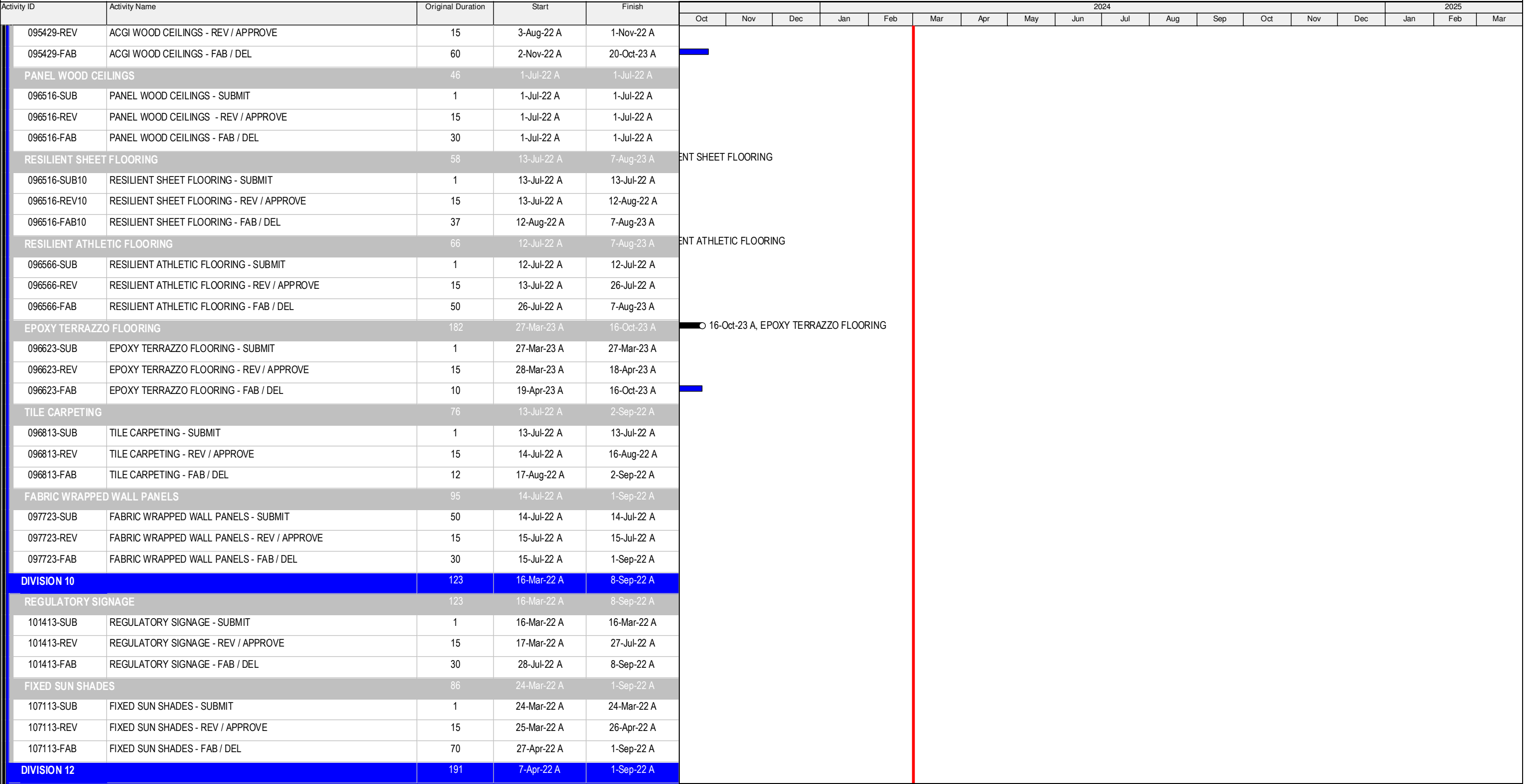
FEB 2024 SCHEDULE UPDATE






SUBCONTRACTOR - ALL

Data Date: 1-Mar-24

Run Date: 21-Mar-24 / 15:23

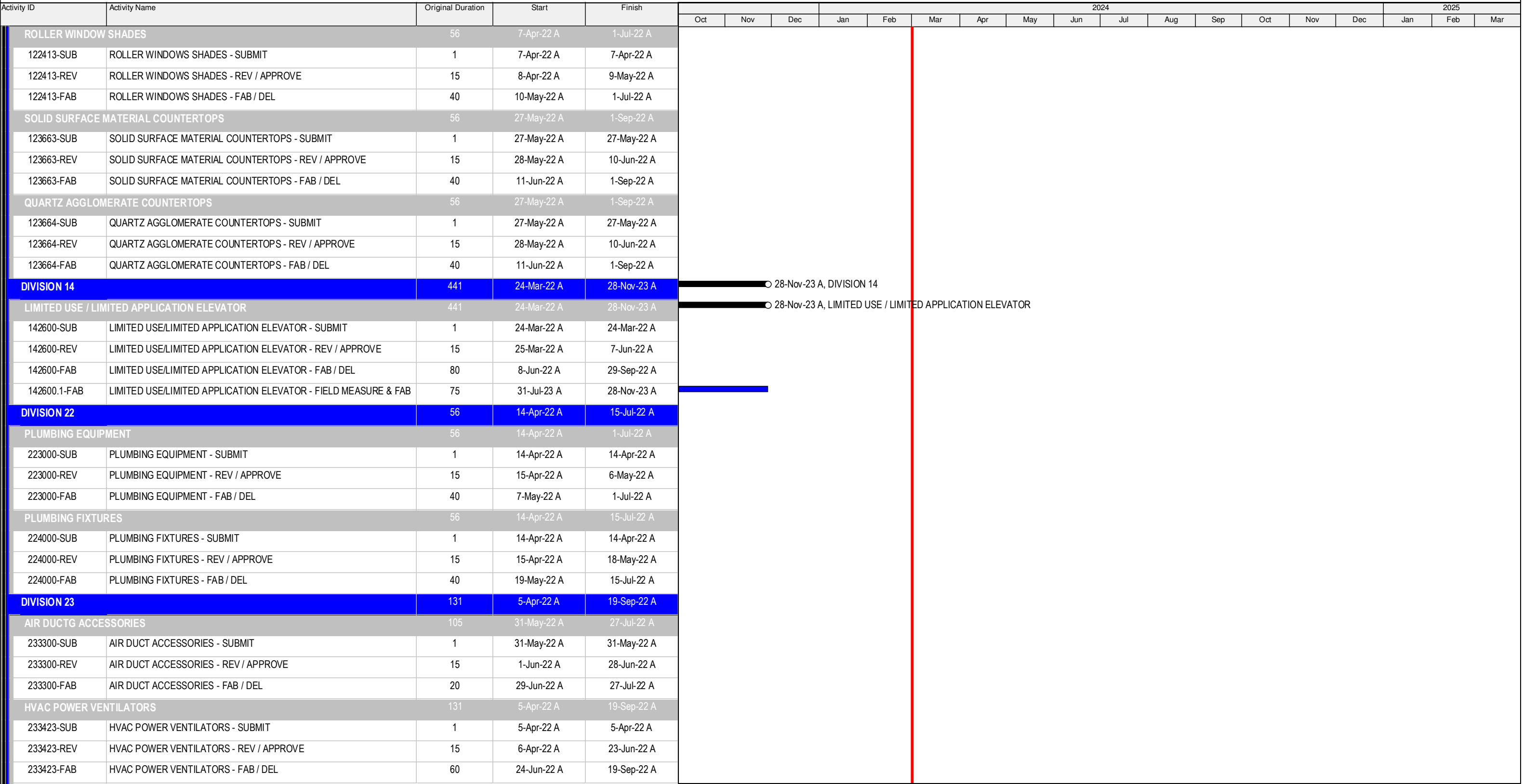
PAGE 4 of 20








 Completed Work  Summary
 Remaining Work
 Critical Work
 Milestone

FEB 2024 SCHEDULE UPDATE
SUBCONTRACTOR - ALL

Data Date: 1-Mar-24
Run Date: 21-Mar-24 / 15:23
PAGE 5 of 20



 Completed Work  Summary
 Remaining Work
 Critical Work
 Milestone

FEB 2024 SCHEDULE UPDATE
SUBCONTRACTOR - ALL

Data Date: 1-Mar-24
Run Date: 21-Mar-24 / 15:23
PAGE 6 of 20



RANCHO CUCAMONGA FIRE STATION NO. 178
RANCHO CUCAMONGA FIRE PROTECTION DISTRICT



Activity ID	Activity Name	Original Duration	Start	Finish	2024												2025																							
					Oct	Nov	Dec	Jan	Feb	Mar	Apr	May	Jun	Jul	Aug	Sep	Oct	Nov	Dec	Jan	Feb	Mar																		
PACKAGED AIR-TO-AIR ENERGY RECOVERY UNITS		76	5-Apr-22 A	19-Jul-22 A																																				
237223-SUB	PACKAGED AIR-TO-AIR ENERGY RECOVERY UNITS - SUBMIT	1	5-Apr-22 A	5-Apr-22 A																																				
237223-REV	PACKAGED AIR-TO-AIR ENERGY RECOVERY UNITS- REV / APPROVE	15	6-Apr-22 A	22-Apr-22 A																																				
237223-FAB	PACKAGED AIR-TO-AIR ENERGY RECOVERY UNITS - FAB / DEL	60	23-Apr-22 A	19-Jul-22 A																																				
SMALL CAPICITY SPLIT SYSTEM AIR CONDITIONERS		46	5-Apr-22 A	1-Jul-22 A																																				
238126-SUB	SMALL CAPACITY SPLIT AIR CONDITIONERS - SUBMIT	1	5-Apr-22 A	5-Apr-22 A																																				
238126-REV	SMALL CAPACITY SPLIT AIR CONDITIONERS - REV / APPROVE	15	6-Apr-22 A	22-Apr-22 A																																				
238126-FAB	SMALL CAPACITY SPLIT AIR CONDITIONERS - FAB / DEL	30	23-Apr-22 A	1-Jul-22 A																																				
DIVISION 26		133	9-Feb-22 A	13-Nov-23 A																			○ 13-Nov-23 A, DIVISION 26																	
LOW VOLTAGE TRANSFORMERS		133	10-Mar-22 A	15-Sep-22 A																																				
262200-SUB	LOW VOLTAGE TRANSFORMERS - SUBMIT	1	10-Mar-22 A	10-Mar-22 A																																				
262200-REV	LOW VOLTAGE TRANSFORMERS - REV / APPROVE	15	11-Mar-22 A	18-Aug-22 A																																				
262200-FAB	LOW VOLTAGE TRANSFORMERS - FAB / DEL	20	18-Aug-22 A	15-Sep-22 A																																				
SWITCHBOARDS		16	11-Feb-22 A	18-Aug-22 A																																				
262413-SUB	SWITCHBOARDS - SUBMIT	1	11-Feb-22 A	11-Feb-22 A																																				
262413-REV	SWITCHBOARDS - REV / APPROVE	15	12-Feb-22 A	18-Aug-22 A																																				
PANEL BOARDS		91	11-Feb-22 A	8-Jul-22 A																																				
262416-SUB	PANELBOARDS - SUBMIT	1	11-Feb-22 A	11-Feb-22 A																																				
262416-REV	PANELBOARDS - REV / APPROVE	15	12-Feb-22 A	9-Jun-22 A																																				
262416-FAB	PANELBOARDS - FAB / DEL	20	10-Jun-22 A	8-Jul-22 A																																				
INTERIOR LIGHTING		133	18-Feb-22 A	13-Nov-23 A	○ 13-Nov-23 A, INTERIOR LIGHTING																																			
265100-SUB	INTERIOR LIGHTING - SUBMIT	1	18-Feb-22 A	18-Feb-22 A	■																																			
265100-REV	INTERIOR LIGHTING - REV / APPROVE	15	19-Feb-22 A	18-Aug-22 A																																				
265100-FAB	INTERIOR LIGHTING - FAB / DEL	20	18-Aug-22 A	13-Nov-23 A																																				
EXTERIOR LIGHTING		133	9-Feb-22 A	15-Sep-22 A																																				
265600-SUB	EXTERIOR LIGHTING - SUBMIT	1	9-Feb-22 A	9-Feb-22 A																																				
265600-REV	EXTERIOR LIGHTING - REV / APPROVE	15	10-Feb-22 A	18-Aug-22 A																																				
265600-FAB	EXTERIOR LIGHTING - FAB / DEL	20	18-Aug-22 A	15-Sep-22 A																																				
DIVISION 28		144	27-Sep-22 A	7-Aug-23 A	■ ON 28																																			
FIRE DETECTION AND ALARM		144	27-Sep-22 A	7-Aug-23 A	■ ETECTION AND ALARM																																			
283100-SUB	FIRE DETECTION AND ALARM - SUBMIT	1	27-Sep-22 A	27-Sep-22 A																																				
283100-REV	FIRE DETECTION AND ALARM - REV / APPROVE	15	28-Sep-22 A	9-Jan-23 A																																				
283100-FAB	FIRE DETECTION AND ALARM - FAB / DEL	60	9-Jan-23 A	7-Aug-23 A																																				
DIVISION 32		269	12-Apr-22 A	22-Nov-23 A	■ ○ 22-Nov-23 A, DIVISION 32																																			
TUBE STEEL FENCES AND GATES		269	12-Apr-22 A	22-Nov-23 A	■ ○ 22-Nov-23 A, TUBE STEEL FENCES AND GATES																																			
323119-SUB	TUBE STEEL FENCES AND GATES - SUBMIT	1	12-Apr-22 A	12-Apr-22 A																																				

Completed Work

Remaining Work

Critical Work

Milestone

Summary

FEB 2024 SCHEDULE UPDATE
SUBCONTRACTOR - ALL



RANCHO CUCAMONGA FIRE STATION NO. 178

RANCHO CUCAMONGA FIRE PROTECTION DISTRICT



Activity ID	Activity Name	Original Duration	Start	Finish	2024												2025																																																																																																																																																																																																																																																																																																																																																						
					Oct	Nov	Dec	Jan	Feb	Mar	Apr	May	Jun	Jul	Aug	Sep	Oct	Nov	Dec	Jan	Feb	Mar																																																																																																																																																																																																																																																																																																																																																	
323119-REV	TUBE STEEL FENCES AND GATES - REV / APPROVE	15	13-Apr-22 A	18-Jan-23 A	<div></div>	<div></div>	<div></div>	<div></div>	<div></div>	<div></div>	<div></div>	<div></div>	<div></div>	<div></div>	<div></div>	<div></div>	<div></div>	<div></div>	<div></div>	<div></div>	<div></div>	<div></div>	<div></div>	<div></div>	<div></div>	<div></div>	<div></div>	<div></div>	<div></div>	<div></div>	<div></div>	<div></div>	<div></div>	<div></div>	<div></div>	<div></div>	<div></div>	<div></div>	<div></div>	<div></div>	<div></div>	<div></div>	<div></div>	<div></div>	<div></div>	<div></div>	<div></div>	<div></div>	<div></div>	<div></div>	<div></div>	<div></div>	<div></div>	<div></div>	<div></div>	<div></div>	<div></div>	<div></div>	<div></div>	<div></div>	<div></div>	<div></div>	<div></div>	<div></div>	<div></div>	<div></div>	<div></div>	<div></div>	<div></div>	<div></div>	<div></div>	<div></div>	<div></div>	<div></div>	<div></div>	<div></div>	<div></div>	<div></div>	<div></div>	<div></div>	<div></div>	<div></div>	<div></div>	<div></div>	<div></div>	<div></div>	<div></div>	<div></div>	<div></div>	<div></div>	<div></div>	<div></div>	<div></div>	<div></div>	<div></div>	<div></div>	<div></div>	<div></div>	<div></div>	<div></div>	<div></div>	<div></div>	<div></div>	<div></div>	<div></div>	<div></div>	<div></div>	<div></div>	<div></div>	<div></div>	<div></div>	<div></div>	<div></div>	<div></div>	<div></div>	<div></div>	<div></div>	<div></div>	<div></div>	<div></div>	<div></div>	<div></div>	<div></div>	<div></div>	<div></div>	<div></div>	<div></div>	<div></div>	<div></div>	<div></div>	<div></div>	<div></div>	<div></div>	<div></div>	<div></div>	<div></div>	<div></div>	<div></div>	<div></div>	<div></div>	<div></div>	<div></div>	<div></div>	<div></div>	<div></div>	<div></div>	<div></div>	<div></div>	<div></div>	<div></div>	<div></div>	<div></div>	<div></div>	<div></div>	<div></div>	<div></div>	<div></div>	<div></div>	<div></div>	<div></div>	<div></div>	<div></div>	<div></div>	<div></div>	<div></div>	<div></div>	<div></div>	<div></div>	<div></div>	<div></div>	<div></div>	<div></div>	<div></div>	<div></div>	<div></div>	<div></div>	<div></div>	<div></div>	<div></div>	<div></div>	<div></div>	<div></div>	<div></div>	<div></div>	<div></div>	<div></div>	<div></div>	<div></div>	<div></div>	<div></div>	<div></div>	<div></div>	<div></div>	<div></div>	<div></div>	<div></div>	<div></div>	<div></div>	<div></div>	<div></div>	<div></div>	<div></div>	<div></div>	<div></div>	<div></div>	<div></div>	<div></div>	<div></div>	<div></div>	<div></div>	<div></div>	<div></div>	<div></div>	<div></div>	<div></div>	<div></div>	<div></div>	<div></div>	<div></div>	<div></div>	<div></div>	<div></div>	<div></div>	<div></div>	<div></div>	<div></div>	<div></div>	<div></div>	<div></div>	<div></div>	<div></div>	<div></div>	<div></div>	<div></div>	<div></div>	<div></div>	<div></div>	<div></div>	<div></div>	<div></div>	<div></div>	<div></div>	<div></div>	<div></div>	<div></div>	<div></div>	<div></div>	<div></div>	<div></div>	<div></div>	<div></div>	<div></div>	<div></div>	<div></div>	<div></div>	<div></div>	<div></div>	<div></div>	<div></div>	<div></div>	<div></div>	<div></div>	<div></div>	<div></div>	<div></div>	<div></div>	<div></div>	<div></div>	<div></div>	<div></div>	<div></div>	<div></div>	<div></div>	<div></div>	<div></div>	<div></div>	<div></div>	<div></div>	<div></div>	<div></div>	<div></div>	<div></div>	<div></div>	<div></div>	<div></div>	<div></div>	<div></div>	<div></div>	<div></div>	<div></div>	<div></div>	<div></div>	<div></div>	<div></div>	<div></div>	<div></div>	<div></div>	<div></div>	<div></div>	<div></div>	<div></div>	<div></div>	<div></div>	<div></div>	<div></div>	<div></div>	<div></div>	<div></div>	<div></div>	<div></div>	<div></div>	<div></div>	<div></div>	<div></div>	<div></div>	<div></div>	<div></div>	<div></div>	<div></div>	<div></div>	<div></div>	<div></div>	<div></div>	<div></div>	<div></div>	<div></div>	<div></div>	<div></div>	<div></div>	<div></div>	<div></div>	<div></div>	<div></div>	<div></div>	<div></div>	<div></div>	<div></div>	<div></div>	<div></div>	<div></div>	<div></div>	<div></div>	<div></div>	<div></div>	<div></div>	<div></div>	<div></div>	<div></div>	<div></div>	<div></div>	<div></div>	<div></div>	<div></div>	<div></div>	<div></div>	<div></div>	<div></div>	<div></div>	<div></div> </

Completed Work

Remaining Work

Critical Work

Milestone

FEB 2024 SCHEDULE UPDATE

SUBCONTRACTOR - ALL

Data Date: 1-Mar-24

Run Date: 21-Mar-24 / 15:23

PAGE 8 of 20



RANCHO CUCAMONGA FIRE STATION NO. 178
RANCHO CUCAMONGA FIRE PROTECTION DISTRICT



Activity ID	Activity Name	Original Duration	Start	Finish	2024												2025						
					Oct	Nov	Dec	Jan	Feb	Mar	Apr	May	Jun	Jul	Aug	Sep	Oct	Nov	Dec	Jan	Feb	Mar	
STRUCTURAL STEEL - PHASE 1		10	30-Nov-22 A	13-Dec-22 A																			
131.BSS	ERECT STRUCTURAL STEEL	10	30-Nov-22 A	13-Dec-22 A																			
SOG		53	30-Jan-23 A	17-Feb-23 A																			
133.BSOG	SET FLOOR TRENCH DRAINS	4	30-Jan-23 A	2-Feb-23 A																			
135.BSOG	VAPOR BARRIER SOG	2	6-Feb-23 A	7-Feb-23 A																			
134.BSOG	REINFORCEMENT	4	13-Feb-23 A	15-Feb-23 A																			
136.BSOG	REINFORCEMENT SOG	3	13-Feb-23 A	15-Feb-23 A																			
137.BSOG	PLACE SOG	1	17-Feb-23 A	17-Feb-23 A																			
CMU		36	10-Apr-22 A	30-Nov-22 A																			
141.BCMU	CMU BLOCK / REINFORCEMENT - 2ND LIFT	5	10-Apr-22 A	11-Apr-22 A																			
142.BCMU	GROUT - 2ND LIFT	1	12-Apr-22 A	12-Apr-22 A																			
139.BCMU	CMU BLOCK / REINFORCEMENT - 1ST LIFT	4	6-Sep-22 A	29-Sep-22 A																			
140.BCMU	GROUT - 1ST LIFT	1	30-Sep-22 A	30-Sep-22 A																			
143.BCMU	CMU BLOCK / REINFORCEMENT - 3RD LIFT	14	18-Oct-22 A	24-Oct-22 A																			
144.BCMU	GROUT - 3RD LIFT	1	25-Oct-22 A	25-Oct-22 A																			
144.1BCMU	CMU BLOCK / REINFORCEMENT - 4TH LIFT	5	26-Oct-22 A	4-Nov-22 A																			
144.2.BCMU	GROUT - 4TH LIFT	1	7-Nov-22 A	7-Nov-22 A																			
144.2.BCMU10	CMU BLOCK / REINFORCEMENT - 5TH LIFT	5	8-Nov-22 A	22-Nov-22 A																			
144.2.BCMU30	CMU BLOCK / REINFORCEMENT - 6TH LIFT	3	22-Nov-22 A	29-Nov-22 A																			
144.2.BCMU20	GROUT - 5TH LIFT	1	23-Nov-22 A	23-Nov-22 A																			
144.2.BCMU40	GROUT - 6TH LIFT	1	30-Nov-22 A	30-Nov-22 A																			
STRUCTURAL STEEL - PHASE 2		11	19-Dec-22 A	25-Jan-23 A																			
147.BSS	STRUCTURAL STEEL - 2ND FLOOR	5	19-Dec-22 A	25-Jan-23 A																			
148.BSS	STRUCTURAL STEEL ROOF	5	20-Dec-22 A	25-Jan-23 A																			
149.BSS	STRUCTURAL STEEL - CLERESTORY	1	20-Dec-22 A	25-Jan-23 A																			
ROOFING		229	30-May-23 A	30-Jan-24 A	● 30-Jan-24 A, ROOFING																		
158.BRF	DECKING PENETRATIONS - ROOF	2	30-May-23 A	31-May-23 A																			
159.BRF	DRAINS - PHASE 1 - ROOF	5	30-May-23 A	31-May-23 A																			
164.BRF	DRAINS - PHASE 2 - ROOF	3	6-Jun-23 A	7-Jun-23 A																			
162.BRF	ROOF HATCH	1	10-Jun-23 A	10-Jun-23 A																			
160.BRF	HVAC CURBS - ROOF	2	16-Jun-23 A	17-Jun-23 A																			
161.BRF	INSULATION - ROOF	3	22-Jun-23 A	31-Jul-23 A																			
163.BRF	TPO ROOFING	5	22-Jun-23 A	31-Jul-23 A																			
172.BRF	PARAPET CAPS - ROOF	3	29-Aug-23 A	31-Aug-23 A																			
165.BRF	SHEET METAL FLASHING AND TRIM - ROOF	5	29-Aug-23 A	31-Aug-23 A																			
169.BRF	HVAC POWER VENTILATORS - ROOF	7	19-Sep-23 A	20-Sep-23 A																			

Completed Work

Remaining Work

Critical Work

Milestone

Summary

FEB 2024 SCHEDULE UPDATE
SUBCONTRACTOR - ALL



RANCHO CUCAMONGA FIRE STATION NO. 178
RANCHO CUCAMONGA FIRE PROTECTION DISTRICT



Activity ID	Activity Name	Original Duration	Start	Finish	2024												2025						
					Oct	Nov	Dec	Jan	Feb	Mar	Apr	May	Jun	Jul	Aug	Sep	Oct	Nov	Dec	Jan	Feb	Mar	
167.BRF	CLEAR STORY WINDOWS - ROOF	2	10-Oct-23 A	12-Oct-23 A	<div><div></div><div></div><div></div><div></div><div></div><div></div></div> <div>ROOF</div> <div></div> <div>LADDERS - ROOF</div> <div></div> <div>MECHANICAL SCREEN - ROOF</div> <div></div> <div>PAINT - ROOF</div> <div></div> <div>MEP FINISHES - ROOF</div> <div></div>																		
166.BRF	SET MECHANICAL EQUIPMENT - ROOF	15	27-Oct-23 A	30-Oct-23 A																			
171.BRF	LADDERS - ROOF	1	29-Nov-23 A	29-Nov-23 A																			
168.BRF	MECHANICAL SCREEN - ROOF	5	25-Jan-24 A	26-Jan-24 A																			
170.BRF	PAINT - ROOF	20	29-Jan-24 A	30-Jan-24 A																			
173.BRF	MEP FINISHES - ROOF	30	29-Jan-24 A	30-Jan-24 A																			
FIRST FLOOR BUILDOUT		322	22-Feb-23 A	30-Jan-24 A	<div></div> <div>30-Jan-24 A, FIRST FLOOR BUILDOUT</div>																		
ROUGH-IN		200	22-Feb-23 A	30-Jan-24 A	<div></div> <div>30-Jan-24 A, ROUGH-IN</div>																		
179.INTR1	LAYOUT - 1ST FLR	2	22-Feb-23 A	23-Feb-23 A																			
180.INTR1	TOP TRACK - 1ST FLR	1	28-Feb-23 A	10-Mar-23 A																			
185.INTR1	METAL FRAMING - 1ST FLR	15	2-Mar-23 A	26-Apr-23 A																			
199.1.INTR1	INSTALL JOIST - 1ST FLOOR	7	16-Mar-23 A	11-Apr-23 A																			
187.INTR1	DOOR FRAMES - 1ST FLR	2	27-Mar-23 A	7-Apr-23 A																			
193.INTR1	IN-WALL- ELECTRICAL - 1ST FLR	5	20-Apr-23 A	28-Apr-23 A																			
151.BSS	SUREBOARD - 1ST FLOOR	10	25-Apr-23 A	28-Apr-23 A																			
191.INTR1	IN-WALL - PLUMBING - 1ST FLR	4	25-Apr-23 A	10-May-23 A																			
194.INTR1	IN-WALL INSPECTIONS - 1ST FLR	3	27-Apr-23 A	1-May-23 A																			
182.INTR1	OVERHEAD - FIRE SUPPRESSION - 1ST FLR	3	8-May-23 A	11-May-23 A																			
181.INTR1	OVERHEAD - PLUMBING - 1ST FLR	3	5-Jun-23 A	18-Jul-23 A																			
186.INTR1	BACKING - 1ST FLR	1	22-Jun-23 A	3-Jul-23 A																			
189.INTR1	SHEETROCK - 1ST FLOOR	5	26-Jun-23 A	6-Jul-23 A																			
195.INTR1	ONE SIDE DRYWALL - 1ST FLR	8	28-Jun-23 A	18-Jul-23 A																			
196.INTR1	INSULATE WALLS - 1ST FLR	2	30-Jun-23 A	15-Jul-23 A																			
199.2.INTR1	SHEAR WALLS	5	3-Jul-23 A	7-Jul-23 A																			
199.INTR1	DRYWALL 2ND SIDE - 1ST FLR	8	11-Jul-23 A	19-Jul-23 A																			
188.INTR1	TEST OVERHEAD - 1ST FLR	2	13-Jul-23 A	13-Jul-23 A																			
176.INTR1	APPARATUS BAY ROLLING DOOR ROUGH - 1ST FLR	2	17-Jul-23 A	19-Jul-23 A																			
183.INTR1	OVERHEAD - MECHANICAL - 1ST FLR	5	24-Jul-23 A	29-Sep-23 A																			
184.INTR1	OVERHEAD - ELECTRICAL / FIRE ALARM - 1ST FLR	5	24-Aug-23 A	30-Jan-24 A	<div></div>																		
178.INTR1	WINDOW FRAME - 1ST FLR	5	26-Dec-23 A	27-Dec-23 A	<div>WINDOW FRAME - 1ST FLR</div>																		
FINISHES		87	17-Jul-23 A	29-Nov-23 A	<div></div> <div>29-Nov-23 A, FINISHES</div>																		
213.INTFN1	APPARATUS BAY ROLLING DOORS - 1ST FLR	3	17-Jul-23 A	19-Jul-23 A																			
224.1.INTFN1	TAPE AND FINISH	7	19-Jul-23 A	25-Aug-23 A																			
201.INTFN1	PRIME AND PAINT - 1ST FLR	3	29-Aug-23 A	30-Aug-23 A																			
204.INTFN1	ACOUSTICAL CEILING GRID - 1ST FLR	4	31-Aug-23 A	5-Sep-23 A																			
207.INTFN1	DEVICES IN CEILING GRID - 1ST FLR	3	18-Oct-23 A	31-Oct-23 A																			

Completed Work

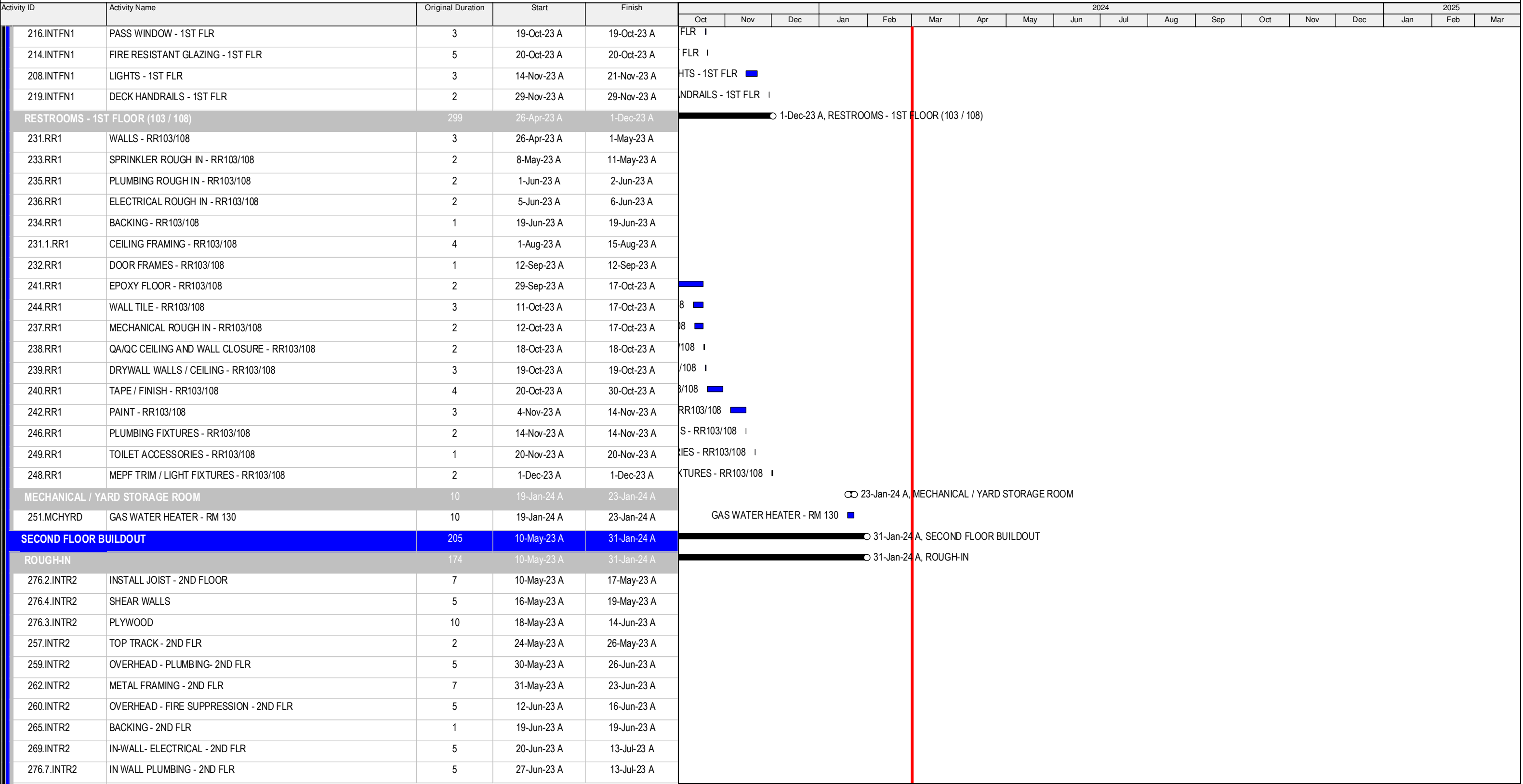
Remaining Work

Critical Work

Milestone

Summary

FEB 2024 SCHEDULE UPDATE
SUBCONTRACTOR - ALL



Completed Work Summary
 Remaining Work
 Critical Work
 Milestone

FEB 2024 SCHEDULE UPDATE

SUBCONTRACTOR - ALL

Data Date: 1-Mar-24
Run Date: 21-Mar-24 / 15:23
PAGE 11 of 20



RANCHO CUCAMONGA FIRE STATION NO. 178
RANCHO CUCAMONGA FIRE PROTECTION DISTRICT



Activity ID	Activity Name	Original Duration	Start	Finish	2024															2025		
					Oct	Nov	Dec	Jan	Feb	Mar	Apr	May	Jun	Jul	Aug	Sep	Oct	Nov	Dec	Jan	Feb	Mar
272.INTR2	ONE SIDE DRYWALL - 2ND FLR	11	11-Jul-23 A	17-Jul-23 A																		
276.INTR2	DRYWALL 2ND SIDE - 2ND FLR	11	11-Jul-23 A	19-Jul-23 A																		
271.INTR2	IN-WALL INSPECTIONS - 2ND FLR	3	13-Jul-23 A	13-Jul-23 A																		
273.INTR2	INSULATE WALLS / CEILINGS - 2ND FLR	2	14-Jul-23 A	14-Jul-23 A																		
276.1.INTR2	ROLL UP DOOR	1	14-Jul-23 A	14-Jul-23 A																		
270.INTR2	IN-WALL - GAS - 2ND FLR	5	15-Jul-23 A	18-Jul-23 A																		
263.INTR2	TEST OVERHEAD - 2ND FLR	1	18-Jul-23 A	18-Jul-23 A																		
261.INTR2	OVERHEAD - MECHANICAL - 2ND FLR	4	24-Jul-23 A	28-Sep-23 A																		
258.INTR2	OVERHEAD - ELECTRICAL / FIRE ALARM - 2ND FLR	5	30-Aug-23 A	31-Jan-24 A																		
266.INTR2	DOOR FRAMES - 2ND FLR	4	12-Sep-23 A	20-Sep-23 A																		
276.5.INTR2	WINDOW FRAME - 2ND FLR	5	26-Dec-23 A	27-Dec-23 A	WINDOW FRAME - 2ND FLR ■																	
275.INTR2	PULL WIRE - ELECTRICAL - 2ND FLR	5	15-Jan-24 A	31-Jan-24 A	PULL WIRE - ELECTRICAL - 2ND FLR ■																	
FINISHES		134	19-Jul-23 A	4-Jan-24 A	○ 4-Jan-24 A, FINISHES																	
299.1.INTFN2	TAPE AND FINISH	7	19-Jul-23 A	25-Sep-23 A																		
283.1.INTFN2	PASS WINDOW	3	29-Aug-23 A	29-Aug-23 A																		
280.INTFN2	ACOUSTICAL CEILING GRID - 2ND FLR	5	1-Sep-23 A	5-Sep-23 A																		
278.INTFN2	PRIME AND PAINT - 2ND FLR	7	4-Oct-23 A	6-Dec-23 A																		
285.INTFN2	EPOXY TERRAZZO - 2ND FLR	7	19-Oct-23 A	30-Oct-23 A	FLR ■																	
281.INTFN2	AGCI WOOD CEILINGS - 2ND FLR	5	25-Oct-23 A	30-Oct-23 A	D FLR ■																	
282.INTFN2	PANEL WOOD CEILING - 2ND FLR	5	25-Oct-23 A	30-Oct-23 A	D FLR ■																	
287.INTFN2	HVAC UNITS AND GRILLS - 2ND FLR	2	1-Nov-23 A	22-Nov-23 A	2ND FLR ■																	
294.INTFN2	DECK HANDRAILS - 2ND FLR	2	29-Nov-23 A	29-Nov-23 A	NDRAILS - 2ND FLR																	
283.INTFN2	FIRE POLE - 2ND FLR	2	4-Jan-24 A	4-Jan-24 A	FIRE POLE - 2ND FLR																	
RESTROOMS - 2ND FLOOR NORTH (213 / 214)		118	12-Jun-23 A	7-Dec-23 A	○ 7-Dec-23 A, RESTROOMS - 2ND FLOOR NORTH (213 / 214)																	
304.RR2N	SPRINKLER ROUGH IN - RR213/214	3	12-Jun-23 A	16-Jun-23 A																		
307.RR2N	PLUMBING ROUGH IN - RR213/214	5	16-Jun-23 A	7-Jul-23 A																		
303.RR2N	BACKING - RR213/214	2	19-Jun-23 A	19-Jun-23 A																		
305.RR2N	ELECTRICAL ROUGH IN - RR213/214	3	19-Jun-23 A	22-Jun-23 A																		
301.RR2N	WALLS FRAMING - RR213/214	5	20-Jun-23 A	26-Jun-23 A																		
308.RR2N	DRYWALL WALLS / CEILING - RR213/214	5	29-Jun-23 A	23-Oct-23 A																		
306.RR2N	MECHANICAL ROUGH IN - RR213/214	3	30-Jun-23 A	28-Sep-23 A																		
309.RR2N	TAPE / FINISH - RR213/214	5	19-Jul-23 A	30-Oct-23 A																		
301.1.RR2N	CEILING FRAMING - RR213/214	5	1-Aug-23 A	1-Aug-23 A																		
302.RR2N	DOOR FRAMES - RR213/214	2	12-Sep-23 A	14-Sep-23 A																		
312.RR2N	EPOXY TERRAZZO - RR213/214	5	16-Oct-23 A	20-Oct-23 A	214 ■																	
316.RR2N	MEPF TRIM / LIGHT FIXTURES - RR213/214	3	14-Nov-23 A	14-Nov-23 A	S - RR213/214																	

■

 Completed Work

○

 Summary

■

 Remaining Work

■

 Critical Work

◆

 Milestone

FEB 2024 SCHEDULE UPDATE
SUBCONTRACTOR - ALL



RANCHO CUCAMONGA FIRE STATION NO. 178
RANCHO CUCAMONGA FIRE PROTECTION DISTRICT



Activity ID	Activity Name	Original Duration	Start	Finish	2024												2025						
					Oct	Nov	Dec	Jan	Feb	Mar	Apr	May	Jun	Jul	Aug	Sep	Oct	Nov	Dec	Jan	Feb	Mar	
317.RR2N	TOILET ACCESSORIES - RR213/214	3	20-Nov-23 A	20-Nov-23 A	<div>IES - RR213/214 I</div> <div>PAINT - RR213/214 I</div> <div><div></div><div>20-Nov-23 A, RESTROOMS - 2ND FLOOR SOUTH (211 / 212)</div></div> <div></div> <div></div> <div></div> <div></div> <div></div> <div></div> <div></div> <div></div> <div></div> <div></div> <div></div> <div></div> <div></div> <div></div> <div></div> <div></div> <div></div> <div></div> <div></div> <div></div> <div></div> <div></div> <div></div> <div></div> <div></div> <div></div> <div></div> <div></div> <div></div> <div></div> <div></div> <div></div> <div></div> <div></div> <div></div> <div></div> <div></div> <div></div> <div></div> <div></div> <div></div> <div></div> <div></div> <div></div> <div></div> <div></div> <div></div> <div></div> <div></div> <div></div> <div></div> <div></div> <div></div> <div></div> <div></div> <div></div> <div></div> <div></div> <div></div> <div></div> <div></div> <div></div> <div></div> <div></div> <div></div> <div></div> <div></div> <div></div> <div></div> <div></div> <div></div> <div></div> <div></div> <div></div> <div></div> <div></div> <div></div> <div></div> <div></div> <div></div> <div></div> <div></div> <div></div> <div></div> <div></div> <div></div> <div></div> <div></div> <div></div> <div></div> <div></div> <div></div> <div></div> <div></div> <div></div> <div></div> <div></div> <div></div> <div></div> <div></div> <div></div> <div></div> <div></div> <div></div> <div></div> <div></div> <div></div> <div></div> <div></div> <div></div> <div></div> <div></div> <div></div> <div></div> <div></div> <div></div> <div></div> <div></div> <div></div> <div></div> <div></div> <div></div> <div></div> <div></div> <div></div> <div></div> <div></div> <div></div> <div></div> <div></div> <div></div> <div></div> <div></div> <div></div> <div></div> <div></div> <div></div> <div></div> <div></div> <div></div> <div></div> <div></div> <div></div> <div></div> <div></div> <div></div> <div></div> <div></div> <div></div> <div></div> <div></div> <div></div> <div></div> <div></div> <div></div> <div></div> <div></div> <div></div> <div></div> <div></div> <div></div> <div></div> <div></div> <div></div> <div></div> <div></div> <div></div> <div></div> <div></div> <div></div> <div></div> <div></div> <div></div> <div></div> <div></div> <div></div> <div></div> <div></div> <div></div> <div></div> <div></div> <div></div> <div></div> <div></div> <div></div> <div></div> <div></div> <div></div> <div></div> <div></div> <div></div> <div></div> <div></div> <div></div> <div></div> <div></div> <div></div> <div></div> <div></div> <div></div> <div></div> <div></div> <div></div> <div></div> <div></div> <div></div> <div></div> <div></div> <div></div> <div></div> <div></div> <div></div> <div></div> <div></div> <div></div> <div></div> <div></div> <div></div> <div></div> <div></div> <div></div> <div></div> <div></div> <div></div> <div></div> <div></div> <div></div> <div></div> <div></div> <div></div> <div></div> <div></div> <div></div> <div></div> <div></div> <div></div> <div></div> <div></div> <div></div> <div></div> <div></div> <div></div> <div></div> <div></div> <div></div> <div></div> <div></div> <div></div> <div></div> <div></div> <div></div> <div></div> <div></div> <div></div> <div></div> <div></div> <div></div> <div></div> <div></div> <div></div> <div></div> <div></div> <div></div> <div></div> <div></div> <div></div> <div></div> <div></div> <div></div> <div></div> <div></div> <div></div> <div></div> <div></div> <div></div> <div></div> <div></div> <div></div> <div></div> <div></div> <div></div> <div></div> <div></div> <div></div> <div></div> <div></div> <div></div> <div></div> <div></div> <div></div> <div></div> <div></div> <div></div> <div></div> <div></div> <div></div> <div></div> <div></div> <div></div> <div></div> <div></div> <div></div> <div></div> <div></div> <div></div> <div></div> <div></div> <div></div> <div></div> <div></div> <div></div> <div></div> <div></div> <div></div> <div></div> <div></div> <div></div> <div></div> <div></div> <div></div> <div></div> <div></div> <div></div> <div></div> <div></div> <div></div> <div></div> <div></div> <div></div> <div></div> <div></div> <div></div> <div></div> <div></div> <div></div> <div></div> <div></div> <div></div> <div></div> <div></div> <div></div> <div></div> <div></div> <div></div> <div></div> <div></div> <div></div> <div></div> <div></div> <div></div> <div></div> <div></div> <div></div> <div></div> <div></div> <div></div> <div></div> <div></div> <div></div> <div></div> <div></div> <div></div> <div></div> <div></div> <div></div> <div></div> <div></div> <div></div> <div></div> <div></div> <div></div> <div></div> <div></div> <div></div> <div></div> <div></div> <div></div> <div></div> <div></div> <div></div> <div></div> <div></div> <div></div> <div></div> <div></div> <div></div> <div></div> <div></div> <div></div> <div></div> <div></div> <div></div> <div></div> <div></div> <div></div> <div></div> <div></div> <div></div> <div></div> <div></div> <div></div> <div></div> <div></div> <div></div> <div></div> <div></div> <div></div> <div></div> <div></div> <div></div> <div></div> <div></div> <div></div> <div></div> <div></div> <div></div> <div></div> <div></div> <div></div> <div></div> <div></div> <div></div> <div></div> <div></div> <div></div> <div></div> <div></div> <div></div> <div></div> <div></div> <div></div> <div></div> <div></div> <div></div> <div></div> <div></div> <div></div> <div></div> <div></div> <div></div> <div></div> <div></div> <div></div> <div></div> <div></div> <div></div> <div></div> <div></div> <div></div> <div></div> <div></div> <div></div> <div></div> <div></div> <div></div> <div></div> <div></div> <div></div> <div></div> <div></div> <div></div> <div></div> <div></div> <div></div> <div></div> <div></div> <div></div> <div></div> <div></div> <div></div> <div></div> <div></div> <div></div> <div></div> <div></div> <div></div> <div></div> <div></div> <div></div> <div></div> <div></div> <div></div> <div></div> <div></div> <div></div> <div></div> <div></div> <div></div> <div></div> <div></div> <div></div> <div></div> <div></div> <div></div> <div></div> <div></div> <div></div> <div></div> <div></div> <div></div> <div></div> <div></div> <div></div> <div></div> <div></div> <div></div> <div></div> <div></div> <div></div> <div></div> <div></div> <div></div> <div></div> <div></div> <div></div> <div></div> <div></div> <div></div> <div></div> <div></div> <div></div> <div></div> <div></div> <div></div> <div></div> <div></div> <div></div> <div></div> <div></div> <div></div> <div></div> <div></div> <div></div> <div></div> <div></div> <div></div> <div></div> <div></div> <div></div> <div></div> <div></div> <div></div> <div></div> <div></div> <div></div> <div></div> <div></div> <div></div> <div></div> <div></div> <div></div> <div></div> <div></div> <div></div> <div></div> <div></div> <div></div> <div></div> <div></div> <div></div> <div></div> <div></div> <div></div> <div></div> <div></div> <div></div> <div></div> <div></div> <div></div> <div></div> <div></div> <div></div> <div></div> <div></div> <div></div> <div></div> <div></div> <div></div> <div></div> <div></div> <div></div> <div></div> <div></div> <div></div> <div></div> <div></div> <div></div> <div></div> <div></div> <div></div> <div></div> <div></div> <div></div> <div></div> <div></div> <div></div> <div></div> <div></div> <div></div> <div></div> <div></div> <div></div> <div></div> <div></div> <div></div> <div></div> <div></div> <div></div> <div></div> <div></div> <div></div> <div></div> <div></div> <div></div> <div></div> <div></div> <div></div> <div></div> <div></div> <div></div> <div></div> <div></div> <div></div> <div></div> <div></div> <div></div> <div></div> <div></div> <div></div> <div></div> <div></div> <div></div> <div></div> <div></div> <div></div> <div></div> <div></div> <div></div> <div></div> <div></div> <div></div> <div></div> <div></div> <div></div> <div></div> <div></div> <div></div> <div></div> <div></div> <div></div> <div></div> <div></div> <div></div> <div></div> <div></div> <div></div> <div></div> <div></div> <div></div> <div></div> <div></div> <div></div> <div></div> <div></div> <div></div> <div></div> <div></div> <div></div> <div></div> <div></div> <div></div> <div></div> <div></div> <div></div> <div></div> <div></div> <div></div> <div></div> <div></div> <div></div> <div></div> <div></div> <div></div> <div></div> <div></div> <div></div> <div></div> <div></div> <div></div> <div></div> <div></div> <div></div> <div></div> <div></div> <div></div> <div></div> <div></div> <div></div> <div></div> <div></div> <div></div> <div></div> <div></div> <div></div> <div></div> <div></div> <div></div> <div></div> <div></div> <div></div> <div></div> <div></div> <div></div> <div></div> <div></div> <div></div> <div></div> <div></div> <div></div> <div></div> <div></div> <div></div> <div></div> <div></div> <div></div> <div></div> <div></div> <div></div> <div></div> <div></div> <div></div> <div></div> <div></div> <div></div> <div></div> <div></div> <div></div> <div></div> <div></div> <div></div> <div></div> <div></div> <div></div> <div></div> <div></div> <div></div> <div></div> <div></div> <div></div> <div></div> <div></div> <div></div> <div></div> <div></div> <div></div> <div></div> <div></div> <div></div> <div></div> <div></div> <div></div> <div></div> <div></div> <div></div> <div></div> <div></div> <div></div> <div></div> <div></div> <div></div> <div></div> <div></div> <div></div> <div></div> <div></div> <div></div> <div></div> <div></div> <div></div> <div></div> <div></div> <div></div> <div></div> <div></div> <div></div> <div></div> <div></div> <div></div> <div></div> <div></div> <div></div> <div></div> <div></div> <div></div> <div></div> <div></div> <div></div> <div></div> <div></div> <div></div> <div></div> <div></div> <div></div> <div></div> <div></div> <div></div> <div></div> <div></div> <div></div> <div></div> <div></div> <div></div> <div></div> <div></div> <div></div> <div></div> <div></div> <div></div> <div></div> <div></div> <div></div> <div></div> <div></div> <div></div> <div></div> <div></div> <div></div> <div></div> <div></div> <div></div> <div></div> <div></div> <div></div> <div></div> <div></div> <div></div> <div></div> <div></div> <div></div> <div></div> <div></div> <div></div> <div></div> <div></div> <div></div> <div></div> <div></div> <div></div> <div></div> <div></div> <div></div> <div></div> <div></div> <div></div> <div></div> <div></div> <div></div> <div></div> <div></div> <div></div> <div></div> <div></div> <div></div> <div></div> <div></div> <div></div> <div></div> <div></div> <div></div> <div></div> <div></div> <div></div> <div></div> <div></div> <div></div> <div></div> <div></div> <div></div> <div></div> <div></div> <div></div> <div></div> <div></div> <div></div> <div></div> <div></div> <div></div> <div></div> <div></div> <div></div> <div></div> <div></div> <div></div> <div></div> <div></div> <div></div> <div></div> <div></div> <div></div> <div></div> <div></div> <div></div> <div></div> <div></div> <div></div> <div></div> <div></div> <div></div> <div></div> <div></div> <div></div> <div></div> <div></div> <div></div> <div></div> <div></div> <div></div> <div></div> <div></div> <div></div> <div></div> <div></div> <div></div> <div></div> <div></div> <div></div> <div></div> <div></div> <div></div> <div></div> <div></div> <div></div> <div></div> <div></div> <div></div> <div></div> <div></div> <div></div> <div></div> <div></div> <div></div> <div></div> <div></div> <div></div> <div></div> <div></div> <div></div> <div></div> <div></div> <div></div> <div></div> <div></div> <div></div> <div></div> <div></div> <div></div> <div></div> <div></div> <div></div> <div></div> <div></div> <div></div> <div></div> <div></div> <div></div> <div></div> <div></div> <div></div> <div></div> <div></div> <div></div> <div></div> <div></div> <div></div> <div></div> <div></div> <div></div> <div></div> <div></div> <div></div> <div></div> <div></div> <div></div> <div></div> <div></div> <div></div> <div></div> <div></div> <div></div> <div></div> <div></div> <div></div> <div></div> <div></div> <div></div> <div></div> <div></div> <div></div> <div></div> <div></div> <div></div> <div></div> <div></div> <div></div> <div></div> <div></div> <div></div> <div></div> <div></div> <div></div> <div></div> <div></div> <div></div> <div></div> <div></div> <div></div> <div></div> <div></div> <div></div> <div></div> <div></div> <div></div> <div></div> <div></div> <div></div> <div></div> <div></div> <div></div> <div></div> <div></div> <div></div> <div></div> <div></div> <div></div> <div></div> <div></div> <div></div> <div></div> <div></div> <div></div> <div></div> <div></div> <div></div> <div></div> <div></div> <div></div> <div></div> <div></div> <div></div> <div></div> <div></div> <div></div> <div></div> <div></div> <div></div> <div></div> <div></div> <div></div> <div></div> <div></div> <div></div> <div></div> <div></div> <div></div> <div></div> <div></div> <div></div> <div></div> <div></div> <div></div> <div></div> <div></div> <div></div> <div></div> <div></div> <div></div> <div></div> <div></div> <div></div> <div></div> <div></div> <div></div> <div></div> <div></div> <div></div> <div></div> <div></div> <div></div> <div></div> <div></div> <div></div> <div></div> <div></div> <div></div> <div></div> <div></div> <div></div> <div></div> <div></div> <div></div> <div></div> <div></div> <div></div> <div></div> <div></div> <div></div> <div></div> <div></div> <div></div> <div></div> <div></div> <div></div> <div></div> <div></div> <div></div> <div></div> <div></div> <div></div> <div></div> <div></div> <div></div> <div></div> <div></div> <div></div> <div></div> <div></div> <div></div> <div></div> <div></div> <div></div> <div></div> <div></div> <div></div> <div></div> <div></div> <div></div> <div></div> <div></div> <div></div> <div></div> <div></div> <div></div> <div></div> <div></div> <div></div> <div></div> <div></div> <div></div> <div></div> <div></div> <div></div> <div></div> <div></div> <div></div> <div></div> <div></div> <div></div> <div></div> <div></div> <div></div> <div></div>																		

Completed Work

Remaining Work

Critical Work

Milestone

FEB 2024 SCHEDULE UPDATE
SUBCONTRACTOR - ALL



RANCHO CUCAMONGA FIRE STATION NO. 178
RANCHO CUCAMONGA FIRE PROTECTION DISTRICT



Activity ID	Activity Name	Original Duration	Start	Finish	2024															2025		
					Oct	Nov	Dec	Jan	Feb	Mar	Apr	May	Jun	Jul	Aug	Sep	Oct	Nov	Dec	Jan	Feb	Mar
378.EXTN	SPRAY ON AIR BARRIER - EXT N	8	16-Jun-23 A	27-Jul-23 A																		
383.EXTN	SHEET METAL - EXT N	5	25-Jul-23 A	18-Sep-23 A																		
379.EXTN	RIGID INSULATION - EXT N	5	31-Jul-23 A	26-Sep-23 A																		
384.EXTN	METAL FABRICATIONS - EXT N	5	14-Aug-23 A	14-Aug-23 A																		
388.EXTN	SUN SHADES - EXT N	10	14-Aug-23 A	15-Aug-23 A																		
385.EXTN	SIDING - EXT N	2	15-Aug-23 A	12-Sep-23 A																		
382.EXTN	STOREFRONT - EXT N	15	29-Aug-23 A	31-Aug-23 A																		
381.EXTN	HAT CHANNEL - EXT N	3	11-Dec-23 A	15-Dec-23 A																		
386.EXTN	CEMENT BOARD - EXT N	10	13-Dec-23 A	31-Jan-24 A																		
EAST		133	24-May-23 A	5-Jan-24 A	○ 5-Jan-24 A, EAST																	
390.EXTE	DENSGLOSS/ SHEARBOARD - EXT E	10	24-May-23 A	8-Jun-23 A																		
391.EXTE	SPRAY ON AIR BARRIER - EXT E	8	16-Jun-23 A	27-Jul-23 A																		
396.EXTE	SHEET METAL - EXT E	5	25-Jul-23 A	18-Sep-23 A																		
392.EXTE	RIGID INSULATION - EXT E	5	31-Jul-23 A	26-Sep-23 A																		
401.EXTE	SUN SHADES - EXT E	10	14-Aug-23 A	15-Aug-23 A																		
398.EXTE	SIDING - EXT E	2	15-Aug-23 A	12-Sep-23 A																		
395.EXTE	STOREFRONT - EXT E	15	29-Aug-23 A	31-Aug-23 A																		
394.EXTE	HAT CHANNEL - EXT E	3	11-Dec-23 A	15-Dec-23 A																		
399.EXTE	CEMENT BOARD - EXT E	10	26-Dec-23 A	5-Jan-24 A																		
SOUTH		140	13-Apr-23 A	26-Dec-23 A	○ 26-Dec-23 A, SOUTH																	
403.EXTS	DENSGLOSS/ SHEARBOARD - EXT S	10	13-Apr-23 A	31-May-23 A																		
404.EXTS	SPRAY ON AIR BARRIER - EXT S	8	16-Jun-23 A	27-Jul-23 A																		
409.EXTS	SHEET METAL - EXT S	5	25-Jul-23 A	18-Sep-23 A																		
405.EXTS	RIGID INSULATION - EXT S	5	31-Jul-23 A	26-Sep-23 A																		
411.EXTS	SIDING - EXT S	2	15-Aug-23 A	25-Aug-23 A																		
408.EXTS	STOREFRONT - EXT S	15	29-Aug-23 A	20-Sep-23 A																		
407.EXTS	HAT CHANNEL - EXT S	3	14-Dec-23 A	18-Dec-23 A																		
412.EXTS	CEMENT BOARD - EXT S	10	22-Dec-23 A	26-Dec-23 A																		
WEST		143	13-Apr-23 A	18-Dec-23 A	○ 18-Dec-23 A, WEST																	
416.EXTW	DENSGLOSS/ SHEARBOARD - EXT W	10	13-Apr-23 A	31-May-23 A																		
417.EXTW	SPRAY ON AIR BARRIER - EXT W	8	16-Jun-23 A	27-Jul-23 A																		
422.EXTW	SHEET METAL - EXT W	5	25-Jul-23 A	18-Sep-23 A																		
418.EXTW	RIGID INSULATION - EXT W	5	31-Jul-23 A	26-Sep-23 A																		
424.EXTW	SIDING - EXT W	2	15-Aug-23 A	25-Aug-23 A																		
421.EXTW	STOREFRONT - EXT W	15	12-Sep-23 A	20-Sep-23 A																		
425.EXTW	CEMENT BOARD - EXT W	10	13-Dec-23 A	15-Dec-23 A																		

Completed Work

Remaining Work

Critical Work

Milestone

Summary

FEB 2024 SCHEDULE UPDATE
SUBCONTRACTOR - ALL



RANCHO CUCAMONGA FIRE STATION NO. 178
RANCHO CUCAMONGA FIRE PROTECTION DISTRICT



Activity ID	Activity Name	Original Duration	Start	Finish	2024																2025		
					Oct	Nov	Dec	Jan	Feb	Mar	Apr	May	Jun	Jul	Aug	Sep	Oct	Nov	Dec	Jan	Feb	Mar	
420.EXTW	HAT CHANNEL - EXT W	3	14-Dec-23 A	18-Dec-23 A	HAT CHANNEL - EXT W																		
SITEWORK		467	2-May-22 A	26-Jan-24 A	SITEWORK																		
429.SITE	EXTERIOR LIGHTS - SITEWORK	15	2-May-22 A	14-Jun-23 A																			
436.SITE	DEMO HARDSCAPE - SITEWORK	3	6-Oct-23 A	6-Oct-23 A																			
433.SITE	DECORATIVE METAL RAILINGS - SITEWORK	5	6-Nov-23 A	26-Jan-24 A	SITEWORK																		
432.SITE	ELECTRICAL CHARGING STATIONS ROUGH - SITEWORK	3	24-Nov-23 A	29-Nov-23 A	UGH - SITEWORK																		
FINAL SITEWORK		66	14-Oct-23 A	26-Jan-24 A	FINAL SITEWORK																		
435.03.SITE	PV CONCRETE PAD - SITEWORK	4	14-Oct-23 A	17-Oct-23 A	RK																		
435.14.SITE	CATCH BASIN / CLEAN OUT BOXES - SITEWORK	4	17-Oct-23 A	18-Oct-23 A	ORK																		
435.04.SITE	SITE CONCRETE CURB AND GUTTERS - SITEWORK	15	17-Oct-23 A	25-Oct-23 A	ORK																		
435.08.SITE	TRENCH DRAIN INSTALL - SITEWORK	7	20-Oct-23 A	1-Nov-23 A	ORK																		
435.02.SITE	BIO BASIN GRADING - SITEWORK	5	31-Oct-23 A	6-Nov-23 A	TEWORK																		
435.05.SITE	BOK PANEL FOOTINGS - SITEWORK	14	2-Nov-23 A	14-Nov-23 A	ITEWORK																		
435.19.SITE	PAVEMENT SUBGRADE - SITEWORK	5	6-Nov-23 A	10-Nov-23 A	SITEWORK																		
435.06.SITE	SIDE WALKS - SITEWORK	9	6-Nov-23 A	8-Dec-23 A	SITEWORK																		
435.20.SITE	IRRIGATION SLEEVES - SITEWORK	5	10-Nov-23 A	16-Nov-23 A	- SITEWORK																		
435.24.SITE	FLAT WORK AROUND MAIN BUILDING - SITEWORK	7	14-Nov-23 A	13-Dec-23 A	G - SITEWORK																		
435.23.SITE	PARKWAY DRAINS - SITEWORK	8	20-Nov-23 A	30-Nov-23 A	INS - SITEWORK																		
435.27.SITE	BOK PANEL INSTALL - SITEWORK	15	20-Nov-23 A	26-Jan-24 A	ALL - SITEWORK																		
435.16.SITE	BOLLARD LIGHTING - SITEWORK	6	24-Nov-23 A	29-Nov-23 A	TING - SITEWORK																		
435.15.SITE	FLAG POLE FOOTING - SITEWORK	6	24-Nov-23 A	30-Nov-23 A	TING - SITEWORK																		
435.09.SITE	FLAG POLE LIGHTING - SITEWORK	4	27-Nov-23 A	8-Dec-23 A	HTING - SITEWORK																		
435.11.SITE	BOLLARD FOOTINGS - SITEWORK	3	27-Nov-23 A	8-Dec-23 A	TINGS - SITEWORK																		
435.12.SITE	BIKE RACK FOOTING - SITEWORK	2	27-Nov-23 A	8-Dec-23 A	DTING - SITEWORK																		
435.10.SITE	EV CHARGERS - SITEWORK	3	28-Nov-23 A	8-Dec-23 A	GERS - SITEWORK																		
435.01.SITE	LIGHT STANDARD UNDERGROUND - SITEWORK	10	29-Nov-23 A	8-Dec-23 A	ROUND - SITEWORK																		
435.26.SITE	DRIVE WAY - SITEWORK	5	29-Nov-23 A	8-Dec-23 A	E WAY - SITEWORK																		
435.18.SITE	RETAINING WALL - SITEWORK	7	30-Nov-23 A	8-Dec-23 A	S WALL - SITEWORK																		
435.31.SITE	FLAT WORK - SITEWORK	27	11-Dec-23 A	7-Jan-24 A	LAT WORK - SITEWORK																		
435.37.SITE	AC PAVING - SITEWORK	7	14-Dec-23 A	15-Dec-23 A	AC PAVING - SITEWORK																		
435.30.SITE	GATE FOOTINGS - SITEWORK	4	4-Jan-24 A	5-Jan-24 A	GATE FOOTINGS - SITEWORK																		
RESERVE APPARTUS BUILDING METAL STUD / PANELING		147	2-Aug-22 A	30-Mar-23 A	ING																		
438.APP	FOOTINGS - APPARATUS	10	2-Aug-22 A	20-Sep-22 A																			
439.APP	SOG - APPARATUS	4	22-Sep-22 A	16-Nov-22 A																			
440.APP	FRAMING - APPARATUS	3	21-Oct-22 A	26-Oct-22 A																			
150.BSS	METAL DECKING	4	26-Oct-22 A	30-Nov-22 A																			

Completed Work

Summary

Remaining Work

Critical Work

Milestone

FEB 2024 SCHEDULE UPDATE
SUBCONTRACTOR - ALL



RANCHO CUCAMONGA FIRE STATION NO. 178
RANCHO CUCAMONGA FIRE PROTECTION DISTRICT



Activity ID	Activity Name	Original Duration	Start	Finish	2024															2025		
					Oct	Nov	Dec	Jan	Feb	Mar	Apr	May	Jun	Jul	Aug	Sep	Oct	Nov	Dec	Jan	Feb	Mar
441.APP	ELECTRICAL, FIRE SPRINKLER, ROUGH - APPARATUS	2	14-Nov-22 A	23-Dec-22 A																		
443.APP	EXTERIOR WALLS - APPARATUS	10	5-Dec-22 A	19-Dec-22 A																		
442.APP	ROOFING - APPARATUS	4	2-Feb-23 A	3-Feb-23 A																		
444.APP	INTERIOR WALLS - APPARATUS	10	3-Mar-23 A	14-Mar-23 A																		
446.APP	FINISHES, PAINT, - APPARATUS	5	24-Mar-23 A	30-Mar-23 A																		
RECORD STORAGE BUILDING CMU		309	3-Aug-22 A	19-Jan-24 A	19-Jan-24 A, RECORD STORAGE BUILDING CMU																	
449.RCRD	FOOTINGS - RECORD STRG	5	3-Aug-22 A	20-Sep-22 A																		
452.RCRD	ELECTRICAL, FIRE SPRINKLER, ROUGH - RECORD STRG	5	5-Sep-22 A	26-Jan-23 A																		
450.RCRD	SOG - RECORD STRG	4	21-Sep-22 A	16-Nov-22 A																		
451.RCRD	CMU - RECORD STRG	5	19-Oct-22 A	21-Dec-22 A																		
453.RCRD	ROOFING - RECORD STRG	5	2-Feb-23 A	3-Feb-23 A																		
454.RCRD	HVAC ROUGH - RECORD STRG	4	18-Jul-23 A	19-Jan-24 A																		
455.RCRD	EXTERIOR WALLS - RECORD STRG	10	8-Nov-23 A	9-Nov-23 A																		
UTILITIES		134	2-May-22 A	24-Jun-23 A																		
ONSITE		134	2-May-22 A	24-Jun-23 A																		
SANITARY SEWER		59	16-May-22 A	22-Jun-22 A																		
467.ONSS	EXCAVATE TRENCH - ONSITE SS	3	16-May-22 A	3-Jun-22 A																		
468.ONSS	BEDDING - ONSITE SS	2	2-Jun-22 A	3-Jun-22 A																		
469.ONSS	PIPING - ONSITE SS	5	6-Jun-22 A	8-Jun-22 A																		
470.ONSS	TESTING - ONSITE SS	1	9-Jun-22 A	10-Jun-22 A																		
471.ONSS	BACKFILL - ONSITE SS	2	20-Jun-22 A	22-Jun-22 A																		
STORM DRAIN		13	2-May-22 A	26-Aug-22 A																		
473.ONSD	EXCAVATE TRENCH - ONSITE SD	3	2-May-22 A	4-May-22 A																		
474.ONSD	BEDDING - ONSITE SD	2	5-May-22 A	10-May-22 A																		
475.ONSD	PIPING - ONSITE SD	5	10-May-22 A	16-May-22 A																		
476.ONSD	TESTING - ONSITE SD	1	20-May-22 A	20-May-22 A																		
477.ONSD	BACKFILL - ONSITE SD	2	30-May-22 A	26-Aug-22 A																		
COMMUNICATIONS		5	2-May-22 A	24-Jun-23 A																		
480.ONCMM	EXCAVATE TRENCH - ONSITE COMM	1	2-May-22 A	24-Jun-23 A																		
481.ONCMM	BEDDING - ONSITE COMM	1	16-May-22 A	24-Jun-23 A																		
484.ONCMM	BACKFILL - ONSITE COMM	1	20-May-22 A	24-Jun-23 A																		
482.ONCMM	PIPING - ONSITE COMM	1	30-May-22 A	24-Jun-23 A																		
ELECTRICAL		134	2-May-22 A	24-Jun-23 A																		
487.ONELC	EXCAVATE FOR VAULT - ONSITE ELC	1	2-May-22 A	5-May-22 A																		
490.ONELC	BACKFILL - ONSITE ELC	1	2-Jun-22 A	24-Jun-23 A																		
488.ONELC	PLACE VAULT / PULL BOXES - ONSITE ELC	4	9-Jun-22 A	24-Jun-23 A																		

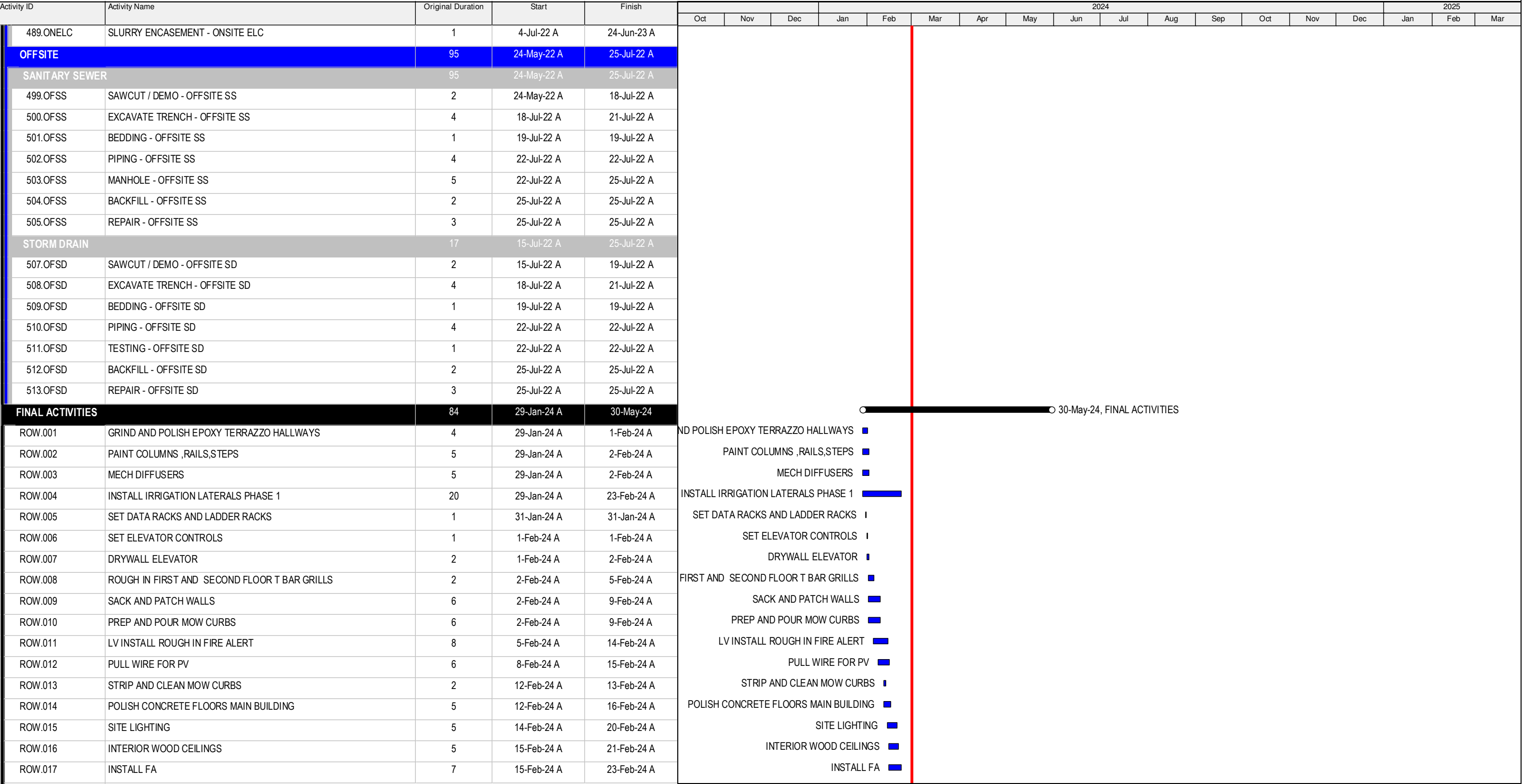
Completed Work

Remaining Work

Critical Work

Milestone

FEB 2024 SCHEDULE UPDATE
SUBCONTRACTOR - ALL



FEB 2024 SCHEDULE UPDATE
SUBCONTRACTOR - ALL

Data Date: 1-Mar-24
Run Date: 21-Mar-24 / 15:23
PAGE 17 of 20



RANCHO CUCAMONGA FIRE STATION NO. 178
RANCHO CUCAMONGA FIRE PROTECTION DISTRICT



Activity ID	Activity Name	Original Duration	Start	Finish	2024															2025		
					Oct	Nov	Dec	Jan	Feb	Mar	Apr	May	Jun	Jul	Aug	Sep	Oct	Nov	Dec	Jan	Feb	Mar
ROW.018	INSTALL CASE WORK TOE KICK	10	15-Feb-24 A	28-Feb-24 A	INSTALL CASE WORK TOE KICK																	
ROW.019	INSTALL SECURITY GATE	5	19-Feb-24 A	23-Feb-24 A	INSTALL SECURITY GATE																	
ROW.020	72 HR CLIMATIZATION	5	19-Feb-24 A	23-Feb-24 A	72 HR CLIMATIZATION																	
ROW.021	GAS COMPANY INSTALL	4	20-Feb-24 A	23-Feb-24 A	GAS COMPANY INSTALL																	
ROW.022	INSTALL RESTROOM SHOWER GLASS DOORS	4	20-Feb-24 A	23-Feb-24 A	INSTALL RESTROOM SHOWER GLASS DOORS																	
ROW.023	INSTALL SECURITY / COM	15	20-Feb-24 A	11-Mar-24	INSTALL SECURITY / COM																	
ROW.024	R5u LIGHT FIXTURE INSTALL	3	26-Feb-24 A	28-Feb-24 A	R5u LIGHT FIXTURE INSTALL																	
ROW.025	INSTALL CASE WORK FIRST FLOOR	10	26-Feb-24 A	8-Mar-24	INSTALL CASE WORK FIRST FLOOR																	
ROW.026	IRRIGATION MAIN PHASE 2	13	26-Feb-24 A	13-Mar-24	IRRIGATION MAIN PHASE 2																	
ROW.027	DRYWALL @ R5U STAIR 2	4	29-Feb-24 A	5-Mar-24	DRYWALL @ R5U STAIR 2																	
ROW.028	RECORD STORAGE GUARD RAILS	5	29-Feb-24 A	6-Mar-24	RECORD STORAGE GUARD RAILS																	
ROW.029	MECH LOUVERS	5	1-Mar-24	7-Mar-24	MECH LOUVERS																	
ROW.030	FINISH LV ROUGH (CONDUIT, FA)	5	1-Mar-24	7-Mar-24	FINISH LV ROUGH (CONDUIT, FA)																	
ROW.031	INSTALL PENDING LIGHT FIXTURES	21	1-Mar-24	29-Mar-24	INSTALL PENDING LIGHT FIXTURES																	
ROW.032	POLISH CONCRETE FLOORS PHASE 2	5	4-Mar-24	8-Mar-24	POLISH CONCRETE FLOORS PHASE 2																	
ROW.033	PAINT STAIR 2	3	6-Mar-24	8-Mar-24	PAINT STAIR 2																	
ROW.034	INSTALL OVEN AND RANGE HOOD	2	7-Mar-24	8-Mar-24	INSTALL OVEN AND RANGE HOOD																	
ROW.035	FIRST FLOOR CAPET TILE / VINYL	5	8-Mar-24	14-Mar-24	FIRST FLOOR CAPET TILE / VINYL																	
ROW.036	CEILING TILES FIRST AND SECOND FLOOR	2	11-Mar-24	12-Mar-24	CEILING TILES FIRST AND SECOND FLOOR																	
ROW.037	INSTALL LOCKERS	5	11-Mar-24	15-Mar-24	INSTALL LOCKERS																	
ROW.038	SECOND FLOOR CASE WORK	10	11-Mar-24	22-Mar-24	SECOND FLOOR CASE WORK																	
ROW.039	FINAL PAINT FIRST FLOOR	10	11-Mar-24	22-Mar-24	FINAL PAINT FIRST FLOOR																	
ROW.040	FS FINISHES	2	12-Mar-24	13-Mar-24	FS FINISHES																	
ROW.041	RUBBER BASE	4	13-Mar-24	18-Mar-24	RUBBER BASE																	
ROW.042	INSTALL IRRIGATION LATERALS PHASE 2	18	13-Mar-24	5-Apr-24	INSTALL IRRIGATION LATERALS PHASE 2																	
ROW.043	SWITCH GEAR	2	15-Mar-24	16-Mar-24	SWITCH GEAR																	
ROW.044	INSPECTION	1	18-Mar-24	18-Mar-24	INSPECTION																	
ROW.045	INSTALL ACOUSTICAL PANELS	3	18-Mar-24	20-Mar-24	INSTALL ACOUSTICAL PANELS																	
ROW.046	RCMU SET TRANSFORMER	1	19-Mar-24	19-Mar-24	RCMU SET TRANSFORMER																	
ROW.047	RCMU PULL WIRE	4	19-Mar-24	22-Mar-24	RCMU PULL WIRE																	
ROW.048	RCMU TERMINATE	4	19-Mar-24	22-Mar-24	RCMU TERMINATE																	
ROW.049	INSTALL FIRST FLOOR DOORS	6	20-Mar-24	27-Mar-24	INSTALL FIRST FLOOR DOORS																	
ROW.050	WALL PROTECTION PANELS	6	20-Mar-24	27-Mar-24	WALL PROTECTION PANELS																	
ROW.051	RCMU ENERGIZE	1	22-Mar-24	22-Mar-24	RCMU ENERGIZE																	
ROW.052	SECOND FLOOR CARPET TILE	5	22-Mar-24	28-Mar-24	SECOND FLOOR CARPET TILE																	
ROW.053	3RD PARTY START UP	2	25-Mar-24	26-Mar-24	3RD PARTY START UP																	

Completed Work

Summary

Remaining Work

Critical Work

Milestone

FEB 2024 SCHEDULE UPDATE
SUBCONTRACTOR - ALL



RANCHO CUCAMONGA FIRE STATION NO. 178
RANCHO CUCAMONGA FIRE PROTECTION DISTRICT



Activity ID	Activity Name	Original Duration	Start	Finish	2024															2025		
					Oct	Nov	Dec	Jan	Feb	Mar	Apr	May	Jun	Jul	Aug	Sep	Oct	Nov	Dec	Jan	Feb	Mar
ROW.054	PLANT	12	25-Mar-24	9-Apr-24	<div><div></div> PLANT</div>																	
ROW.055	INSTALL COUNTERTOPS FIRST FLOOR	5	26-Mar-24	1-Apr-24	<div><div></div> INSTALL COUNTERTOPS FIRST FLOOR</div>																	
ROW.056	APP BAY FINAL PAINT	11	26-Mar-24	9-Apr-24	<div><div></div> APP BAY FINAL PAINT</div>																	
ROW.057	VEHICLE EXHAUST FINAL	2	27-Mar-24	28-Mar-24	<div><div></div> VEHICLE EXHAUST FINAL</div>																	
ROW.058	TEST HORMAN DOORS	3	27-Mar-24	29-Mar-24	<div><div></div> TEST HORMAN DOORS</div>																	
ROW.059	TEST LV	5	27-Mar-24	2-Apr-24	<div><div></div> TEST LV</div>																	
ROW.060	HVAC START UP	5	27-Mar-24	2-Apr-24	<div><div></div> HVAC START UP</div>																	
ROW.061	SECOND FLOOR RESTROOM CASE WORK	8	29-Mar-24	9-Apr-24	<div><div></div> SECOND FLOOR RESTROOM CASE WORK</div>																	
ROW.062	KITCHEN QUARTZ COUNTERTOPS	5	1-Apr-24	5-Apr-24	<div><div></div> KITCHEN QUARTZ COUNTERTOPS</div>																	
ROW.063	ELEVATOR PHASE 2	5	1-Apr-24	5-Apr-24	<div><div></div> ELEVATOR PHASE 2</div>																	
ROW.064	HVAC TAB	5	3-Apr-24	9-Apr-24	<div><div></div> HVAC TAB</div>																	
ROW.065	TEST FA	5	3-Apr-24	9-Apr-24	<div><div></div> TEST FA</div>																	
ROW.066	DECORATIVE GRAVELFORMS	7	4-Apr-24	12-Apr-24	<div><div></div> DECORATIVE GRAVELFORMS</div>																	
ROW.067	SECOND FLOOR RUBBER FLOORING	4	8-Apr-24	11-Apr-24	<div><div></div> SECOND FLOOR RUBBER FLOORING</div>																	
ROW.068	INSTALL SECOND FLOOR DOORS	5	8-Apr-24	12-Apr-24	<div><div></div> INSTALL SECOND FLOOR DOORS</div>																	
ROW.069	BIO PLANTERS	10	8-Apr-24	19-Apr-24	<div><div></div> BIO PLANTERS</div>																	
ROW.070	ELEVATOR STATE INSPECTION	15	8-Apr-24	26-Apr-24	<div><div></div> ELEVATOR STATE INSPECTION</div>																	
ROW.071	FS FINAL	2	9-Apr-24	10-Apr-24	<div><div></div> FS FINAL</div>																	
ROW.072	FINISHES AT CASE WORK	4	10-Apr-24	15-Apr-24	<div><div></div> FINISHES AT CASE WORK</div>																	
ROW.073	FINAL PAINT SECOND FLOOR	10	10-Apr-24	23-Apr-24	<div><div></div> FINAL PAINT SECOND FLOOR</div>																	
ROW.074	INSTALL WINDOW SHADES	10	10-Apr-24	23-Apr-24	<div><div></div> INSTALL WINDOW SHADES</div>																	
ROW.075	INTERNAL PUNCHLIST SITE	10	11-Apr-24	24-Apr-24	<div><div></div> INTERNAL PUNCHLIST SITE</div>																	
ROW.076	INSTALL CORNER GUARDS	2	22-Apr-24	23-Apr-24	<div><div></div> INSTALL CORNER GUARDS</div>																	
ROW.077	SECOND FLOOR COUNTER TOPS	5	22-Apr-24	26-Apr-24	<div><div></div> SECOND FLOOR COUNTER TOPS</div>																	
ROW.078	GROUND COVER	12	22-Apr-24	7-May-24	<div><div></div> GROUND COVER</div>																	
ROW.079	SECOND FLOOR RESTROOM FINISHES / ACCESSORIES	3	29-Apr-24	1-May-24	<div><div></div> SECOND FLOOR RESTROOM FINISHES / ACCESSORIES</div>																	
ROW.080	SIGNAGE	4	2-May-24	7-May-24	<div><div></div> SIGNAGE</div>																	
ROW.081	INSTALL WASHERS / DRYERS / EQUIPMENT	5	2-May-24	8-May-24	<div><div></div> INSTALL WASHERS / DRYERS / EQUIPMENT</div>																	
ROW.082	PUNCHLIST BUILDING	10	6-May-24	17-May-24	<div><div></div> PUNCHLIST BUILDING</div>																	
ROW.083	PUNCHLIST CORRECTIONS	10	13-May-24	24-May-24	<div><div></div> PUNCHLIST CORRECTIONS</div>																	
ROW.084	COMISSIONING	3	28-May-24	30-May-24	<div><div></div> COMISSIONING</div>																	
RAIN ALLOWANCE		332	7-Nov-22 A	1-Mar-24	<div><div></div> 1-Mar-24, RAIN ALLOWANCE</div>																	
RN.11.07.22	RAIN DAY 11.07.22	1	7-Nov-22 A	7-Nov-22 A																		
RN.11.08.22	RAIN DAY 11.08.22	1	8-Nov-22 A	8-Nov-22 A																		
RN.12.12.22	RAIN DAY 12.12.22	1	12-Dec-22 A	12-Dec-22 A																		
RN.12.13.22	RAIN DAY 12.13.22	1	13-Dec-22 A	13-Dec-22 A																		

Completed Work

Remaining Work

Critical Work

Milestone

Summary

FEB 2024 SCHEDULE UPDATE
SUBCONTRACTOR - ALL



RANCHO CUCAMONGA FIRE STATION NO. 178
RANCHO CUCAMONGA FIRE PROTECTION DISTRICT



Activity ID	Activity Name	Original Duration	Start	Finish				2024												2025			
					Oct	Nov	Dec	Jan	Feb	Mar	Apr	May	Jun	Jul	Aug	Sep	Oct	Nov	Dec	Jan	Feb	Mar	
RN.01.03.23	RAIN DAY 01.03.23	1	3-Jan-23 A	3-Jan-23 A																			
RN.01.04.23	RAIN DAY 01.04.23	1	4-Jan-23 A	4-Jan-23 A																			
RN.01.05.23	RAIN DAY 01.05.23	1	5-Jan-23 A	5-Jan-23 A																			
RN.01.09.23	RAIN DAY 01.09.23	1	9-Jan-23 A	9-Jan-23 A																			
RN.01.10.23	RAIN DAY 01.10.23	1	10-Jan-23 A	10-Jan-23 A																			
RN.01.16.23	RAIN DAY 01.16.23	1	16-Jan-23 A	16-Jan-23 A																			
RN.02.23.23	RAIN DAY 02.23.23	1	23-Feb-23 A	23-Feb-23 A																			
RN.02.24.23	RAIN DAY 02.24.23	1	24-Feb-23 A	24-Feb-23 A																			
RN.03.10.23	RAIN DAY 03.10.23	1	10-Mar-23 A	10-Mar-23 A																			
RN.03.15.23	RAIN DAY 03.15.23	1	15-Mar-23 A	15-Mar-23 A																			
RN.03.20.23	RAIN DAY 03.20.23	1	20-Mar-23 A	20-Mar-23 A																			
RN.03.21.23	RAIN DAY 03.21.23	1	21-Mar-23 A	21-Mar-23 A																			
RN.03.22.23	RAIN DAY 03.22.23	1	22-Mar-23 A	22-Mar-23 A																			
RN.03.29.23	RAIN DAY 03.29.23	1	29-Mar-23 A	29-Mar-23 A																			
RN.08.21.23	RAIN DAY 08.21.23	1	21-Aug-23 A	21-Aug-23 A																			
RN.01.22.24	RAIN DAY 01.22.24	1	22-Jan-24 A	22-Jan-24 A	RAIN DAY 01.22.24 I																		
RN.02.01.24	RAIN DAY 02.01.24	1	1-Feb-24 A	1-Feb-24 A	RAIN DAY 02.01.24 I																		
RN.02.05.24	RAIN DAY 02.05.24	1	5-Feb-24 A	5-Feb-24 A	RAIN DAY 02.05.24 I																		
RN.02.06.24	RAIN DAY 02.06.24	1	6-Feb-24 A	6-Feb-24 A	RAIN DAY 02.06.24 I																		
RN.02.19.24	RAIN DAY 02.19.24	1	19-Feb-24 A	19-Feb-24 A	RAIN DAY 02.19.24 I																		
RN.02.20.24	RAIN DAY 02.20.24	1	20-Feb-24 A	20-Feb-24 A	RAIN DAY 02.20.24 I																		
520.CX	RAIN ALLOWANCE	0	1-Mar-24	1-Mar-24				RAIN ALLOWANCE															

Completed Work

Summary

Remaining Work

Critical Work

Milestone

FEB 2024 SCHEDULE UPDATE
SUBCONTRACTOR - ALL