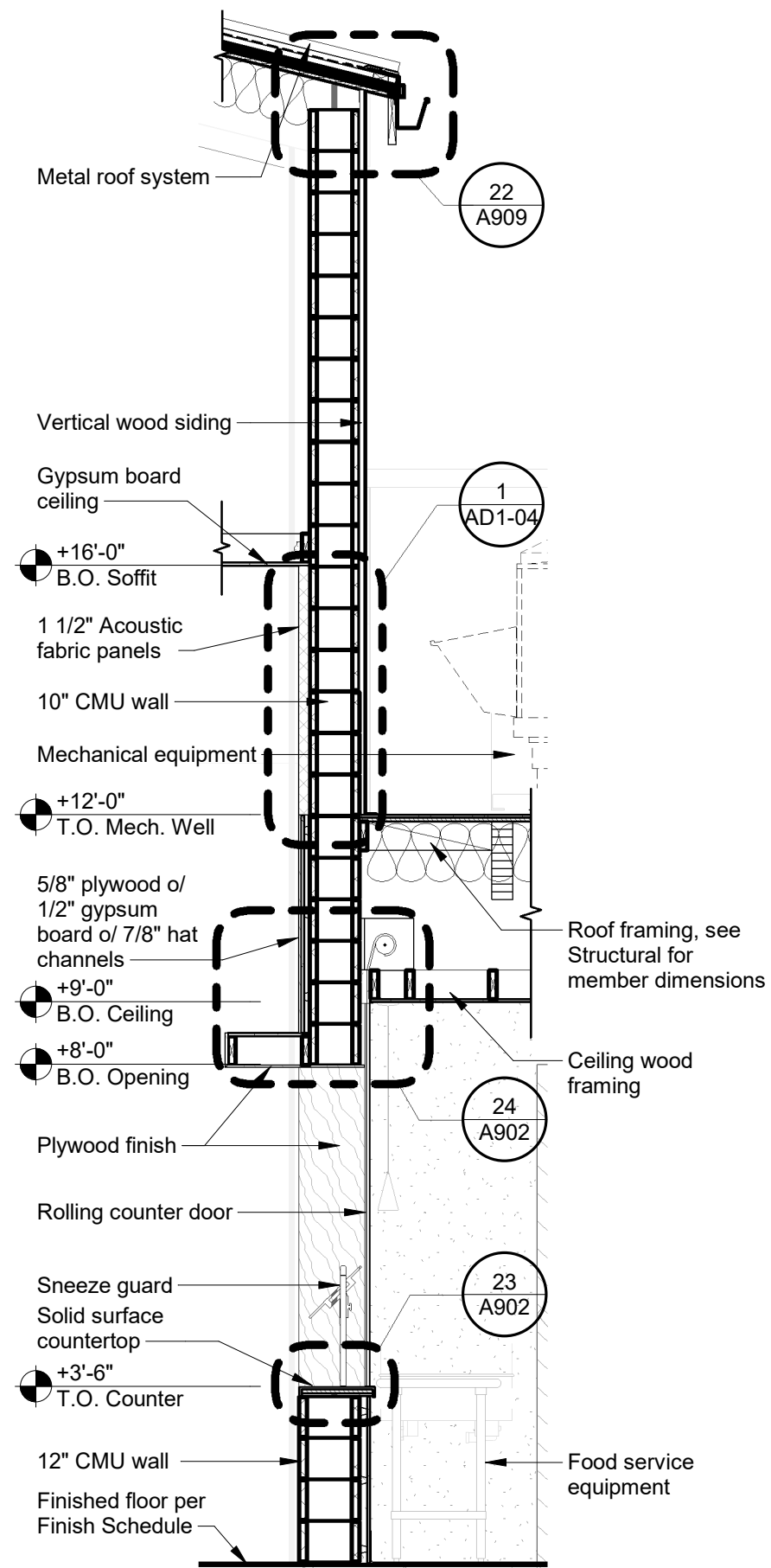


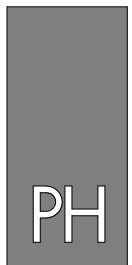
2 Wall @ Lightwell
1" = 1'-0"

REFERENCE: 14/A904



1 SC - Wall Section thru Multipurpose CMU Wall
3/8" = 1'-0"

REFERENCE: 11/A904



PAUL HALAJIAN ARCHITECTS

389 Clovis Ave, Suite 100
Clovis, CA 93612-1185
T: 559.297.7900 F: 559.297.7950
www.halajianarch.com

PAUL HALAJIAN ARCHITECTS expressly reserves its common law copyright and other property rights specifically related to the contents of these plans. This document and the ideas and designs incorporated herein, are an instrument of professional service rendered by PAUL HALAJIAN ARCHITECTS, its not to be used in whole or in part for any other project without prior written authorization from PAUL HALAJIAN ARCHITECTS.

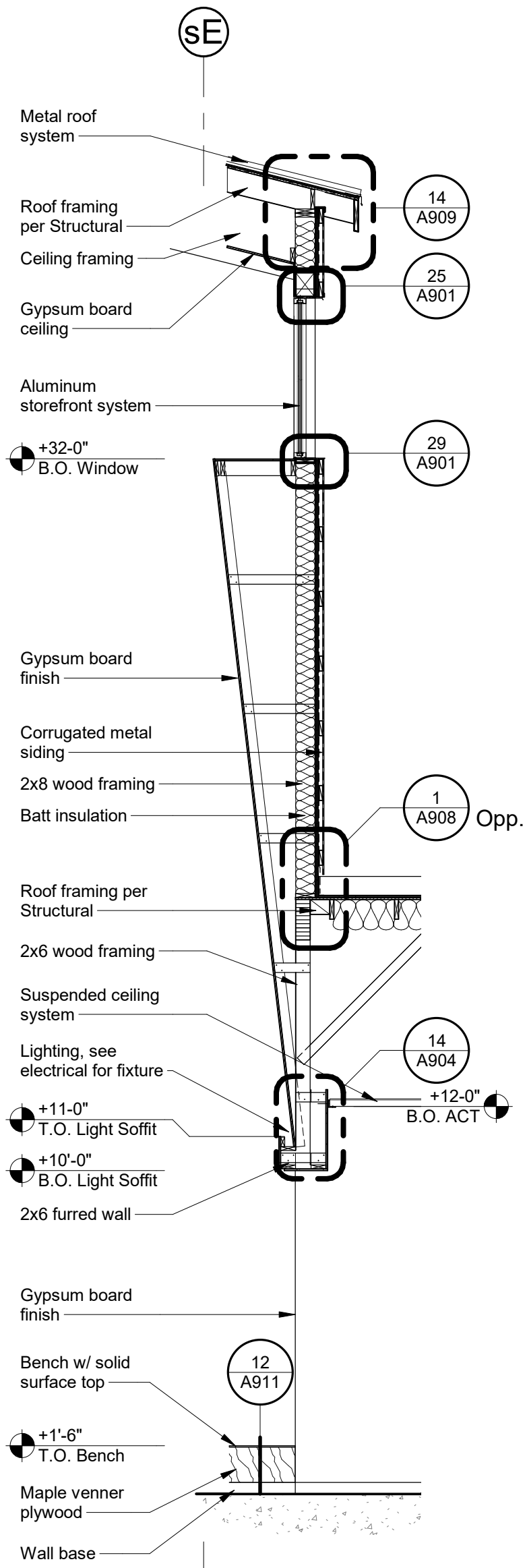
PROJECT:
Clovis Landmark Square
Senior Activity Center and Transit Center
735 Third Street, Clovis, CA 93612
SHEET: Wall Sections

DRAWING SET INFORMATION:

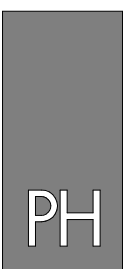
06/19/2020	Plan Check Submittal
REVISIONS:	
1	08/12/2020 Plan Check Revisions
2	10/08/2020 Addendum #1

PROJECT NUMBER:
2016-39

SHEET NUMBER:
AD1-02



SC - Wall Section thru West Hall Tower Wall
 1/4" = 1'-0"



PAUL HALAJIAN ARCHITECTS
 389 Clovis Ave, Suite 100
 Clovis, CA 93612-1185
 T: 559.297.7900 F: 559.297.7950
 www.halajianarch.com

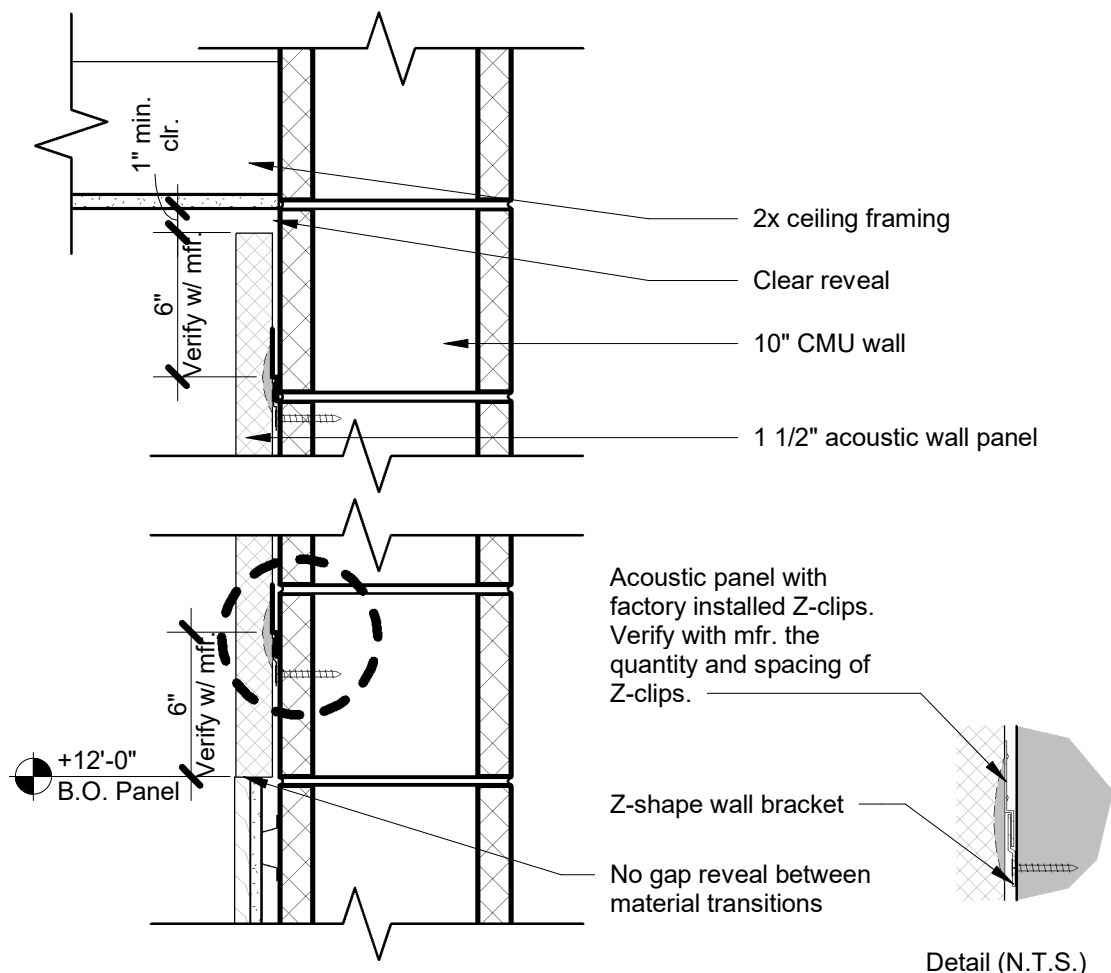
PAUL HALAJIAN ARCHITECTS expressly reserves its common law copyright and other property rights specifically related to the contents of these plans. This document and the ideas and designs incorporated herein, as an instrument of professional service rendered by PAUL HALAJIAN ARCHITECTS, is not to be used in whole or in part for any other project without prior written authorization from PAUL HALAJIAN ARCHITECTS.

Wall Section thru West Hall Tower Wall

PROJECT:
Senior Activity Center and Transit Center
Clovis Landmark Square
 735 Third Street, Clovis, CA 93612

REFERENCE: 17/A904

PROJECT NUMBER:
 2016-39
 SHEET NUMBER:
 AD1-03



SC - Acoustic Wall Panel

1 1/2" = 1'-0"

PAUL HALAJIAN ARCHITECTS
 389 Clovis Ave, Suite 100
 Clovis, CA 93612-1185
 T: 559.297.7900 F: 559.297.7950
 www.halajianarch.com

PAUL HALAJIAN ARCHITECTS expressly reserves its common law copyright and other property rights specifically related to the contents of these plans. This document and the ideas and designs incorporated herein, as an instrument of professional service rendered by PAUL HALAJIAN ARCHITECTS, is not to be used in whole or in part for any other project without prior written authorization from PAUL HALAJIAN ARCHITECTS.

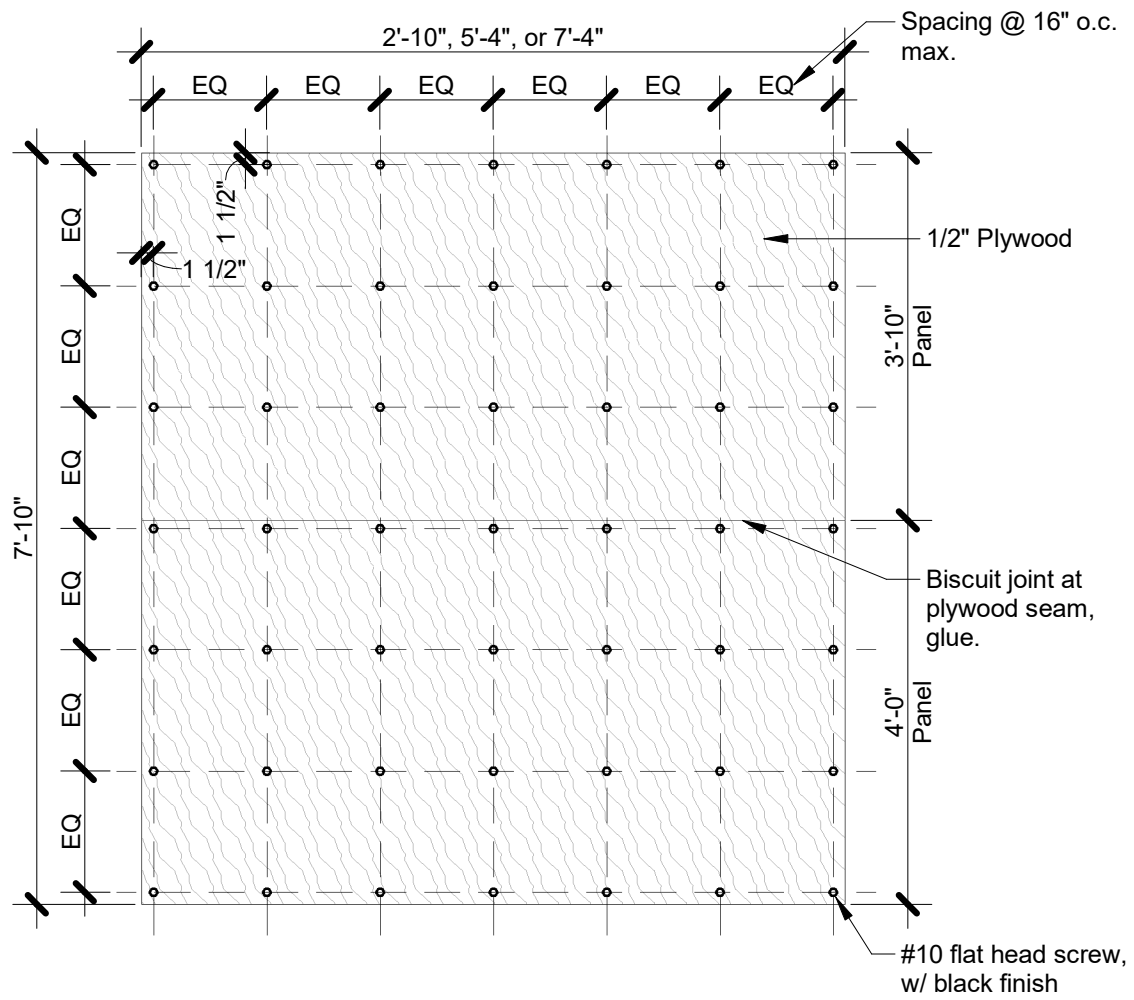
SC - Acoustic Wall Panel

PROJECT:
Senior Activity Center and Transit Center
Clovis Landmark Square
 735 Third Street, Clovis, CA 93612

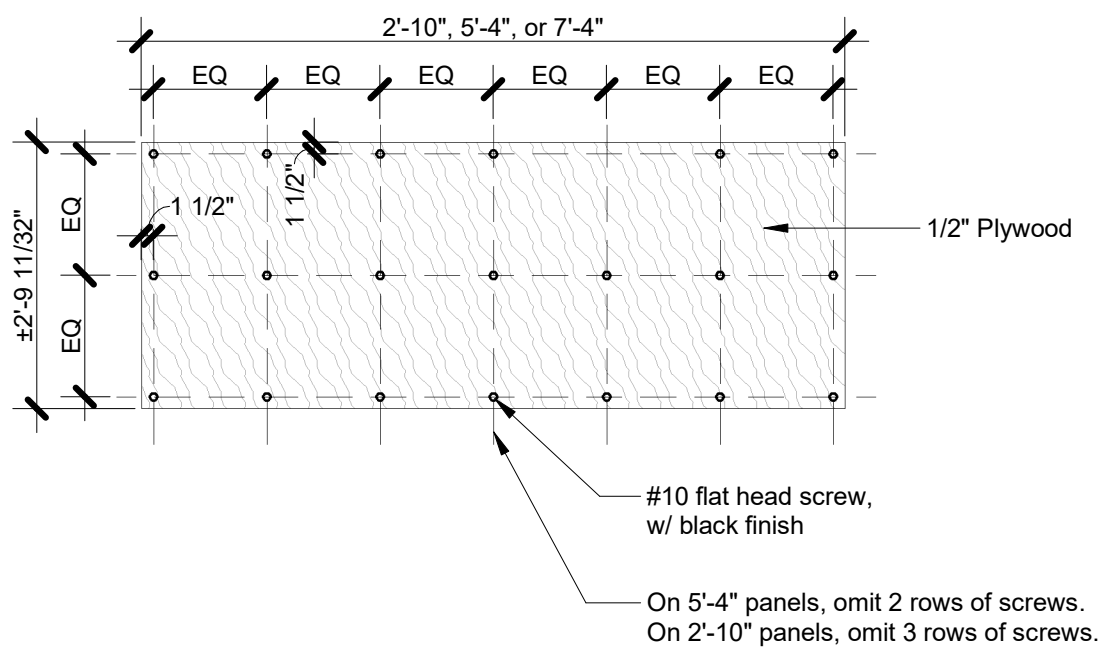
REFERENCE: N/A

PROJECT NUMBER:
 2016-39

SHEET NUMBER:
 AD1-04



Typ. Large Ceiling Panel



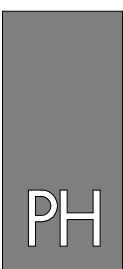
Typ. Small Ceiling Panel

Note:

1. Refer to Reflected Ceiling Plan for plywood panel layout.
2. Align screw heads across plywood ceiling panels.
3. Plywood panels to be pre-drilled to receive screws.
4. Main beam runners to be installed parallel to the north-south axis and cross tees to be installed parallel to the east-west axis.
5. Main runners @ 48" o.c. max. and intersecting cross tees @ 16" o.c. max. per mnfr.

SC - Typ. Wood Ceiling Panel - Screw Spacing

1/2" = 1'-0"



PAUL HALAJIAN ARCHITECTS

389 Clovis Ave, Suite 100
Clovis, CA 93612-1185
T: 559.297.7900 F: 559.297.7950
www.halajianarch.com

PAUL HALAJIAN ARCHITECTS expressly reserves its common law copyright and other property rights specifically related to the contents of these plans. This document and the ideas and designs incorporated herein, as an instrument of professional service rendered by PAUL HALAJIAN ARCHITECTS, is not to be used in whole or in part for any other project without prior written authorization from PAUL HALAJIAN ARCHITECTS.

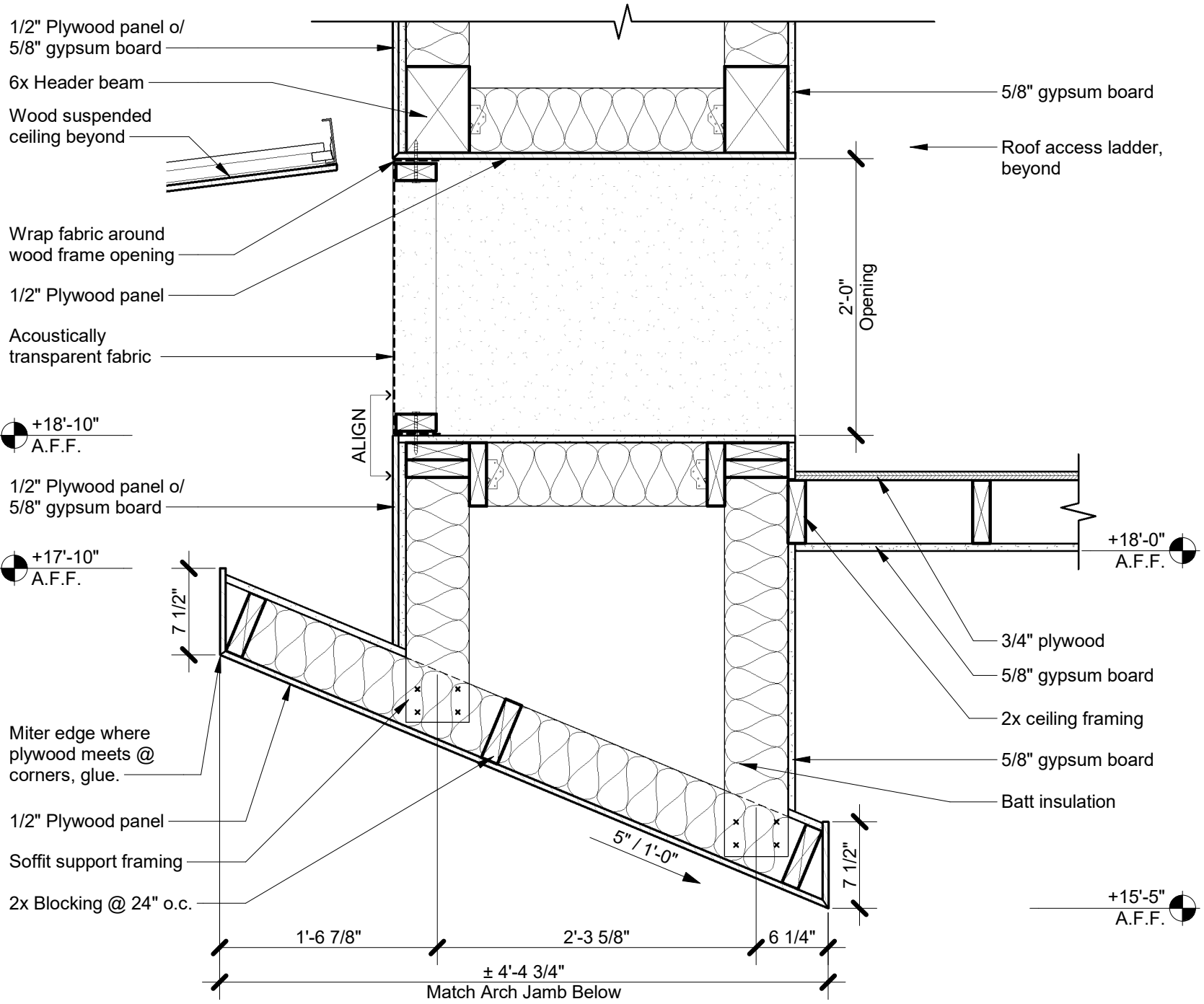
Typ. Wood Ceiling Panel @ Multi-Purpose Room

PROJECT:
Senior Activity Center and Transit Center
Clovis Landmark Square
735 Third Street, Clovis, CA 93612

REFERENCE: 9/A905

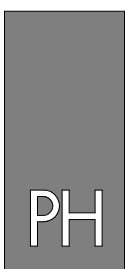
PROJECT NUMBER:
2016-39

SHEET NUMBER:
AD1-05



SC - Proscenium Arch Head

1" = 1'-0"



**PAUL HALAJIAN
ARCHITECTS**

389 Clovis Ave, Suite 100
Clovis, CA 93612-1185
T: 559.297.7900 F: 559.297.7950
www.halajianarch.com

PAUL HALAJIAN ARCHITECTS expressly reserves its common law copyright and other property rights specifically related to the contents of these plans. This document and the ideas and designs incorporated herein, as an instrument of professional service rendered by PAUL HALAJIAN ARCHITECTS, is not to be used in whole or in part for any other project without prior written authorization from PAUL HALAJIAN ARCHITECTS.

Proscenium Arch Head

PROJECT:

Senior Activity Center and Transit Center

Clovis Landmark Square

735 Third Street, Clovis, CA 93612

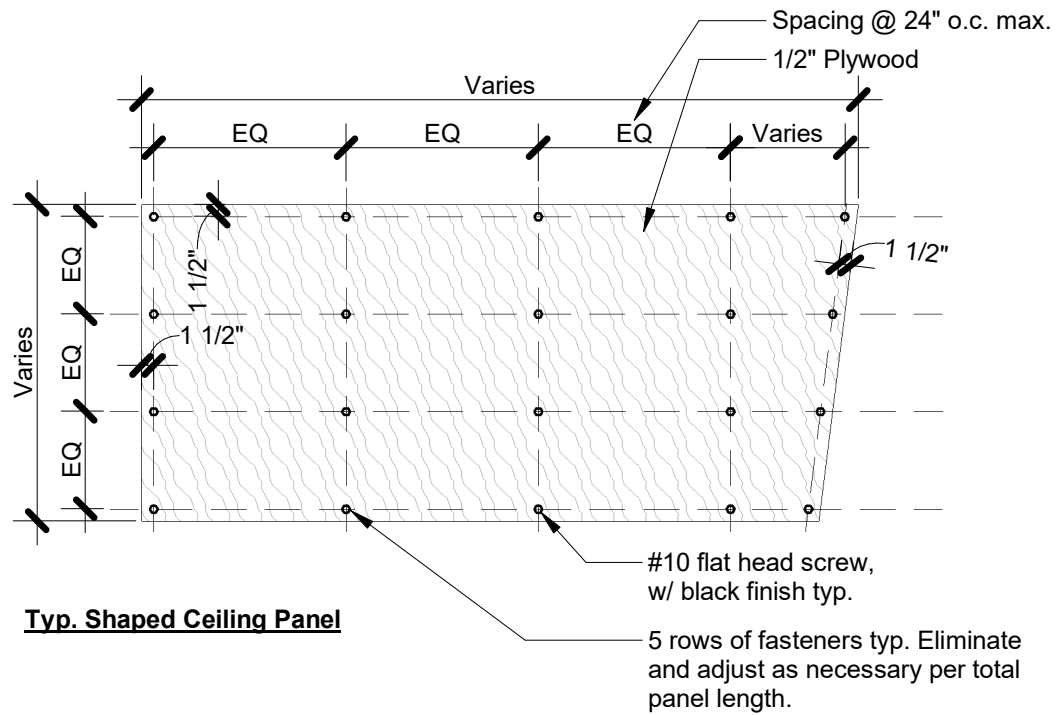
REFERENCE: 18/A905

PROJECT NUMBER:

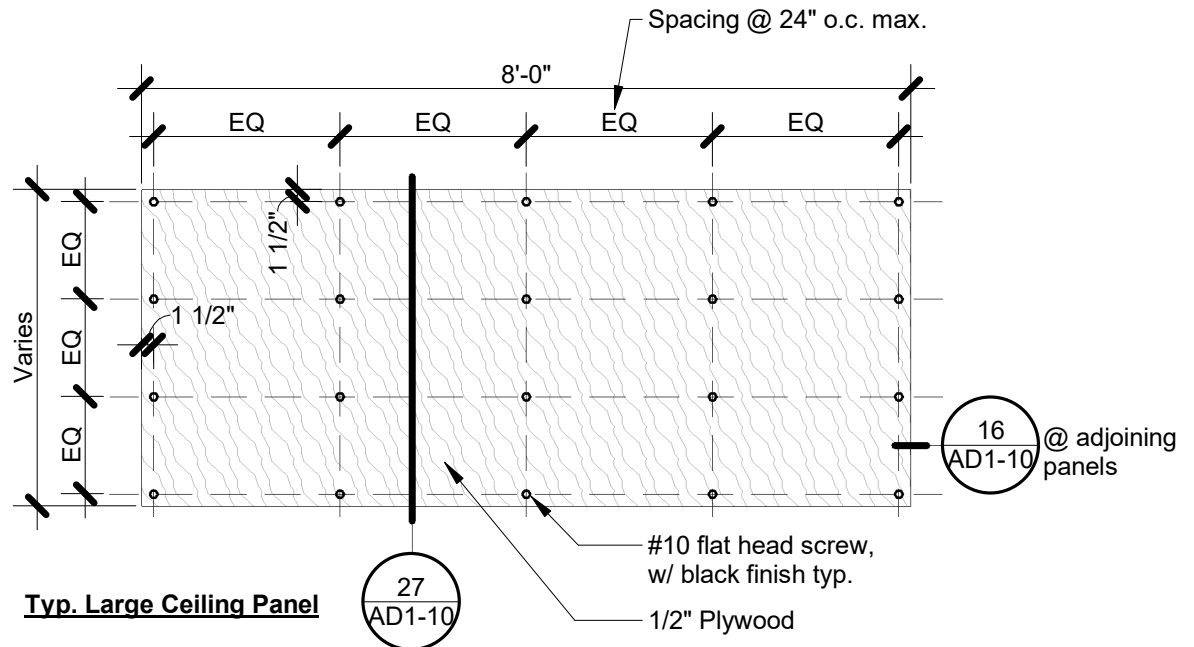
2016-39

SHEET NUMBER:

AD1-07



Typ. Shaped Ceiling Panel



Typ. Large Ceiling Panel

Note:

1. Refer to Reflected Ceiling Plan for plywood panel layout and sizes.
2. Align screw heads across plywood ceiling panels.
3. Plywood panels to be pre-drilled to receive screws.

SC - Wd. Clg. Panel @ Lobby - Screw Spacing

1/2" = 1'-0"



PAUL HALAJIAN ARCHITECTS

389 Clovis Ave, Suite 100
Clovis, CA 93612-1185
T: 559.297.7900 F: 559.297.7950
www.halajianarch.com

PAUL HALAJIAN ARCHITECTS expressly reserves its common law copyright and other property rights specifically related to the contents of these plans. This document and the ideas and designs incorporated herein, as an instrument of professional service rendered by PAUL HALAJIAN ARCHITECTS, is not to be used in whole or in part for any other project without prior written authorization from PAUL HALAJIAN ARCHITECTS.

Typ. Wood Ceiling Panel @ Lobby

PROJECT:

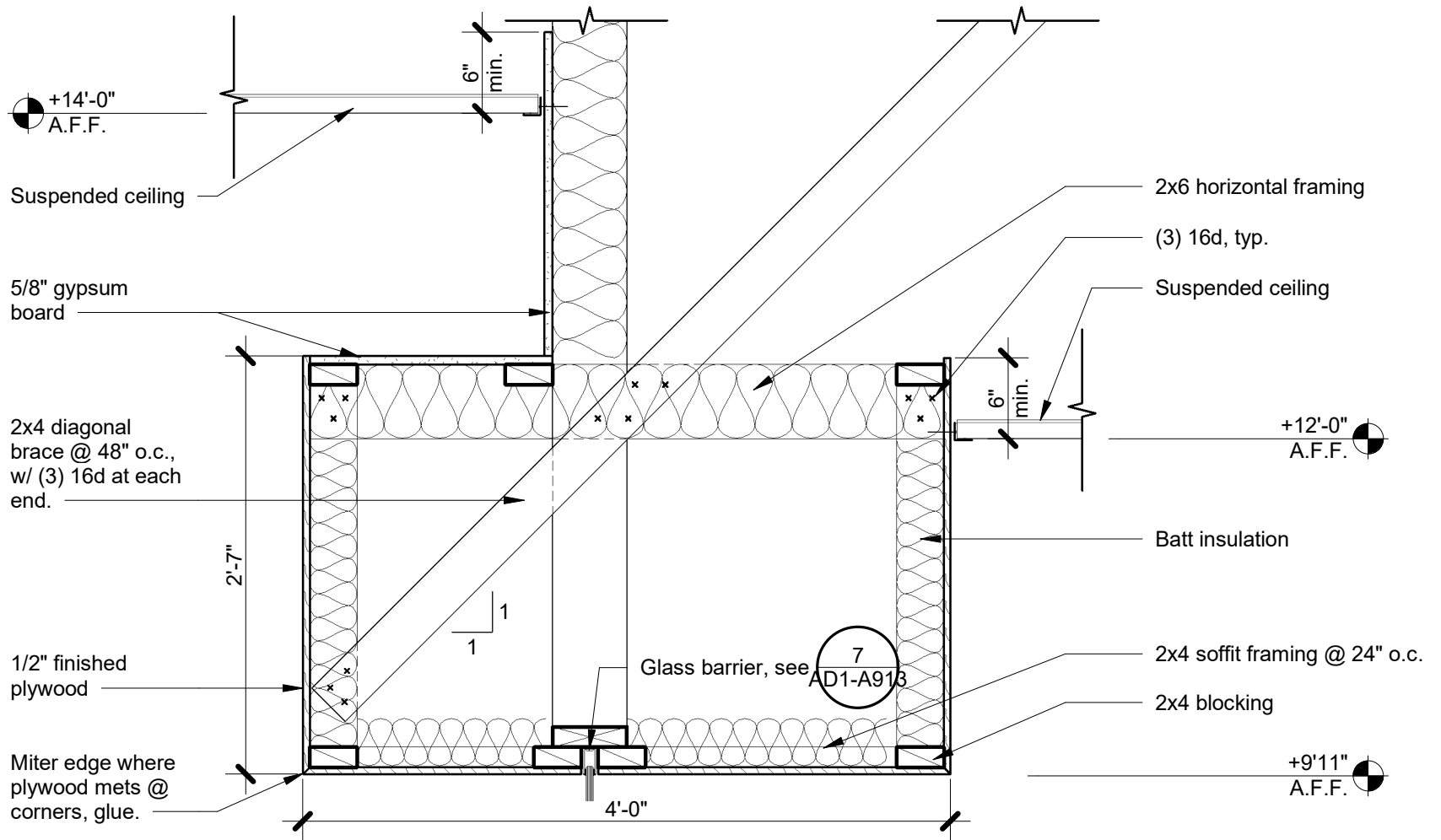
Senior Activity Center and Transit Center
Clovis Landmark Square

735 Third Street, Clovis, CA 93612

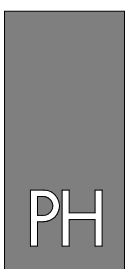
REFERENCE: 27/A905

PROJECT NUMBER:
2016-39

SHEET NUMBER:
AD1-08



TC - Soffit @ Reception Desk
 1" = 1'-0"

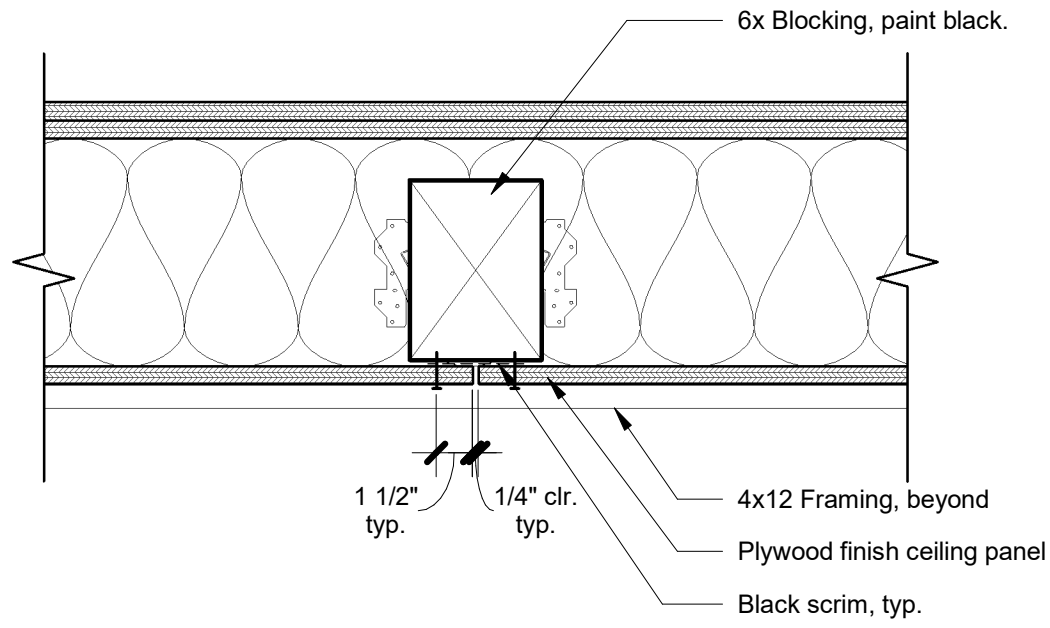


PAUL HALAJIAN ARCHITECTS
 389 Clovis Ave, Suite 100
 Clovis, CA 93612-1185
 T: 559.297.7900 F: 559.297.7950
 www.halajianarch.com

Transit Center - Soffit @ Reception Desk
 PROJECT:
Senior Activity Center and Transit Center
Clovis Landmark Square
 735 Third Street, Clovis, CA 93612

REFERENCE: 7/A906
 PROJECT NUMBER:
 2016-39
 SHEET NUMBER:
 AD1-09

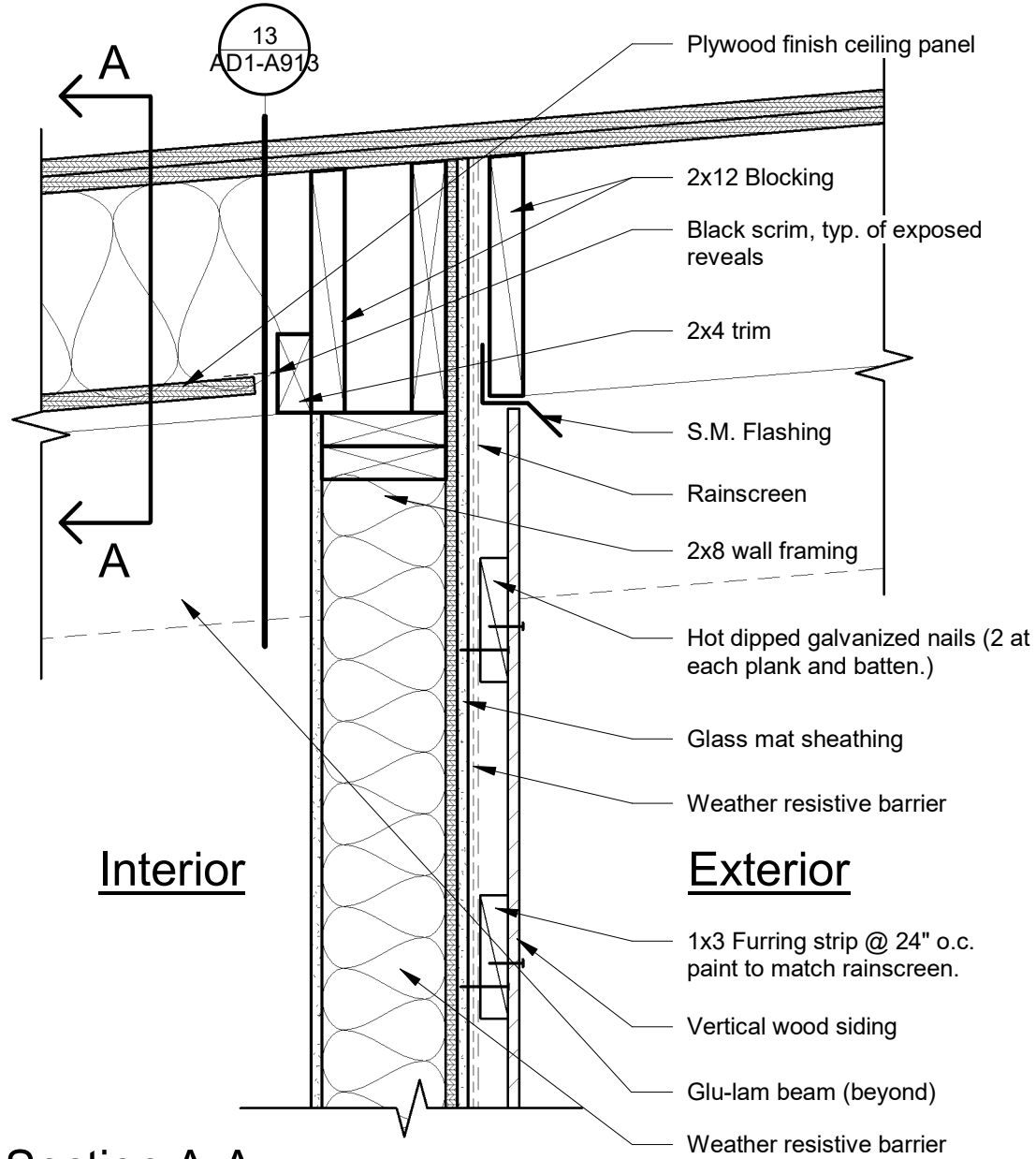
PAUL HALAJIAN ARCHITECTS expressly reserves its common law copyright and other property rights specifically related to the contents of these plans. This document and the ideas and designs incorporated herein, as an instrument of professional service rendered by PAUL HALAJIAN ARCHITECTS, is not to be used in whole or in part for any other project without prior written authorization from PAUL HALAJIAN ARCHITECTS.



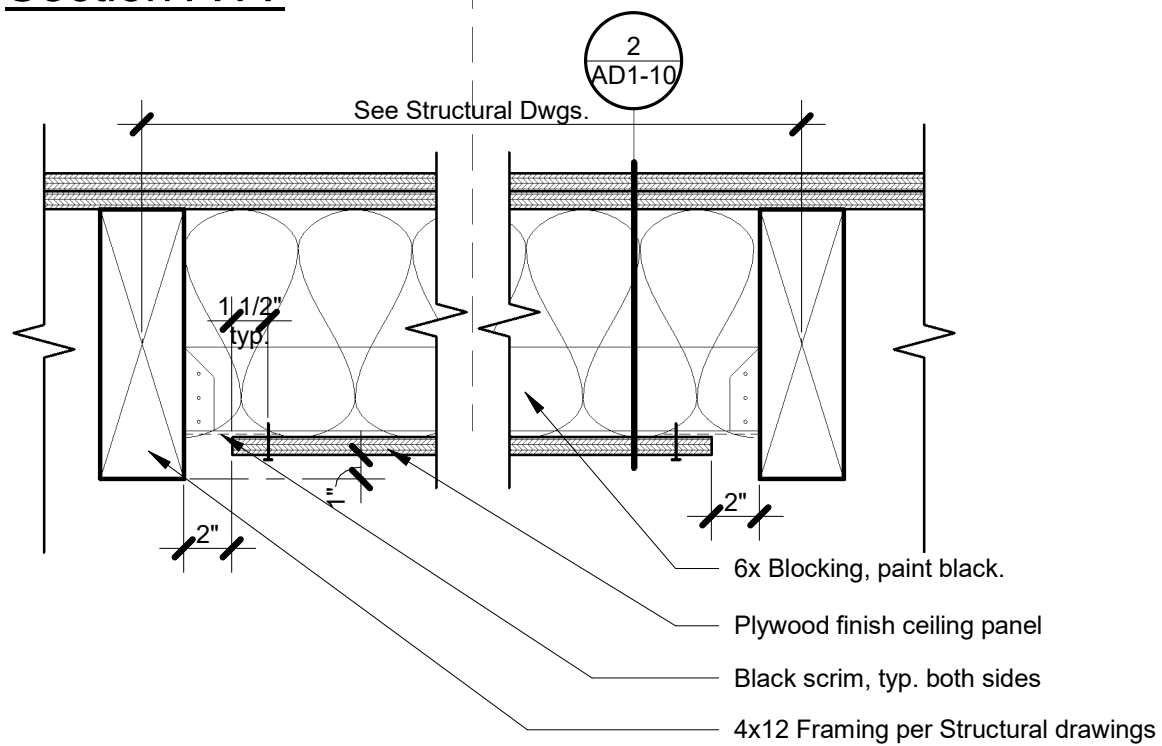
② Interior Wood Ceiling Panel

1 1/2" = 1'-0"

REFERENCE: 16/A907



Section A-A



① Exterior Wall at Exposed Roof

1 1/2" = 1'-0"

REFERENCE: 27/A907



PAUL HALAJIAN ARCHITECTS
 389 Clovis Ave, Suite 100
 Clovis, CA 93612-1185
 T: 559.297.7900 F: 559.297.7950
 www.halajianarch.com

Wood Ceiling @ Lobby

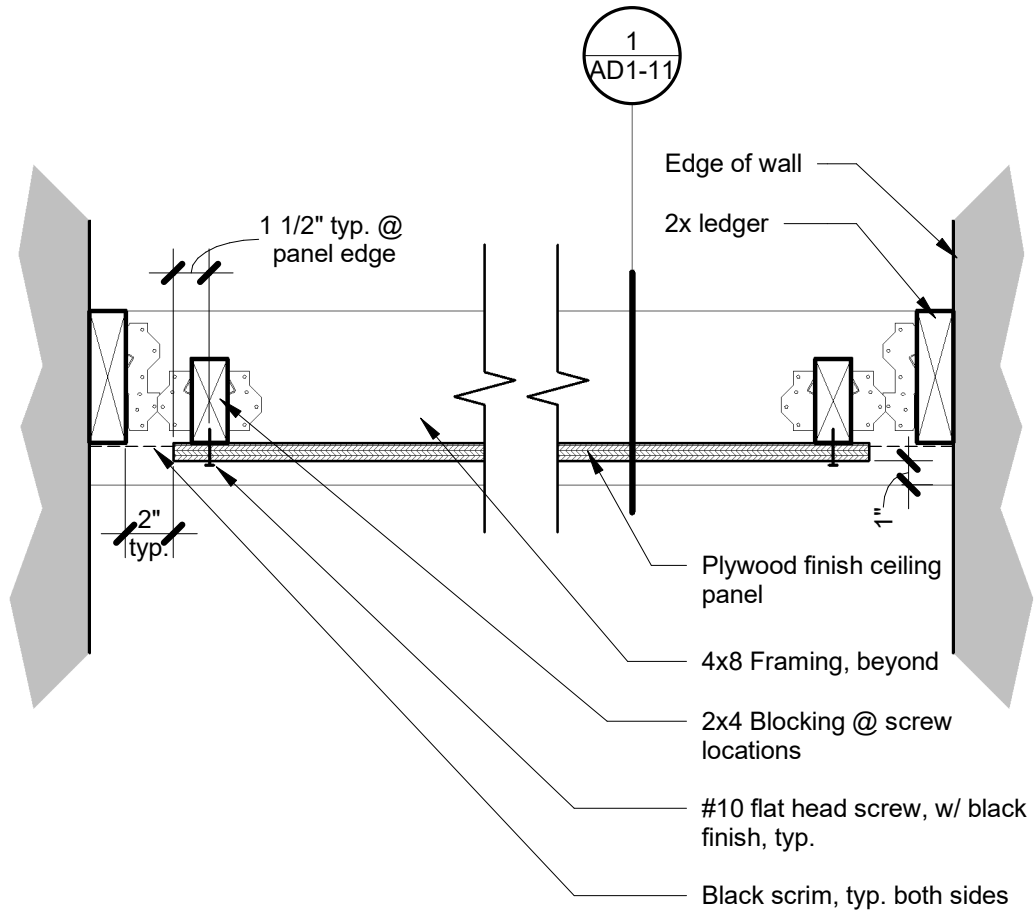
PROJECT:
Senior Activity Center and Transit Center
Clovis Landmark Square
 735 Third Street, Clovis, CA 93612

REFERENCE:

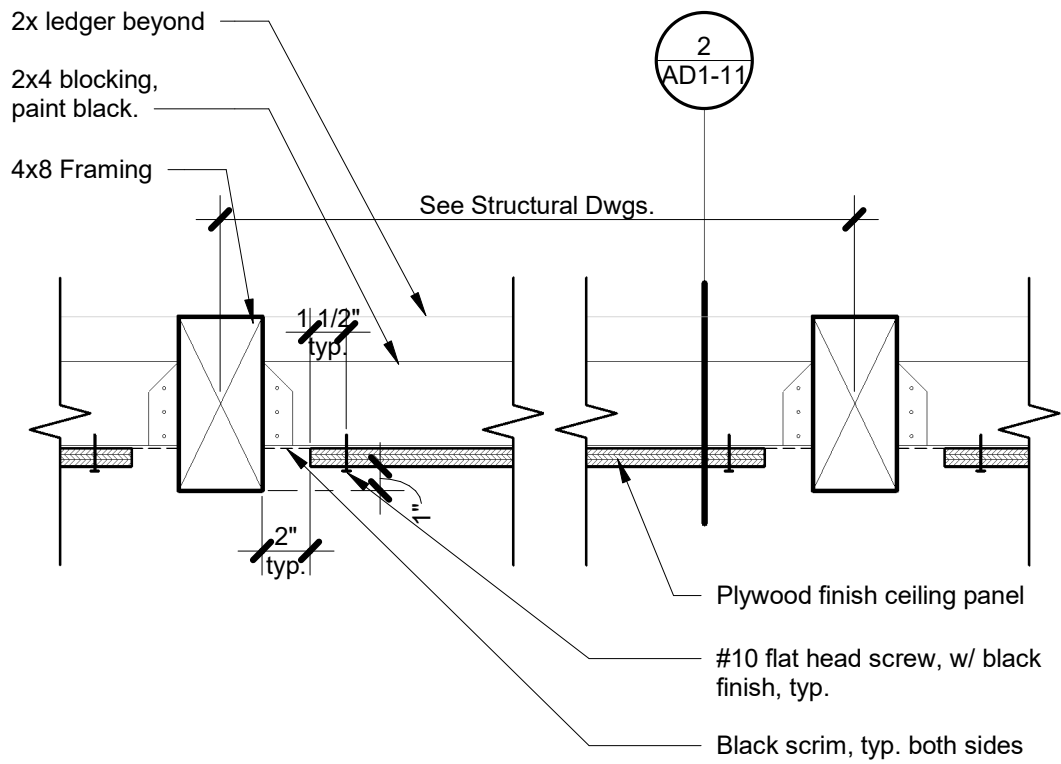
PROJECT NUMBER:
 2016-39

SHEET NUMBER:
 AD1-10

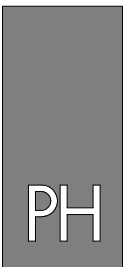
PAUL HALAJIAN ARCHITECTS expressly reserves its common law copyright and other property rights specifically related to the contents of these plans. This document and the ideas and designs incorporated herein, as an instrument of professional service rendered by PAUL HALAJIAN ARCHITECTS, is not to be used in whole or in part for any other project without prior written authorization from PAUL HALAJIAN ARCHITECTS.



① Wood Ceiling at South Hall 2
 1 1/2" = 1'-0"



② Wood Ceiling at South Hall
 1 1/2" = 1'-0"



PAUL HALAJIAN ARCHITECTS
 389 Clovis Ave, Suite 100
 Clovis, CA 93612-1185
 T: 559.297.7900 F: 559.297.7950
 www.halajianarch.com

PAUL HALAJIAN ARCHITECTS expressly reserves its common law copyright and other property rights specifically related to the contents of these plans. This document and the ideas and designs incorporated herein, as an instrument of professional service rendered by PAUL HALAJIAN ARCHITECTS, is not to be used in whole or in part for any other project without prior written authorization from PAUL HALAJIAN ARCHITECTS.

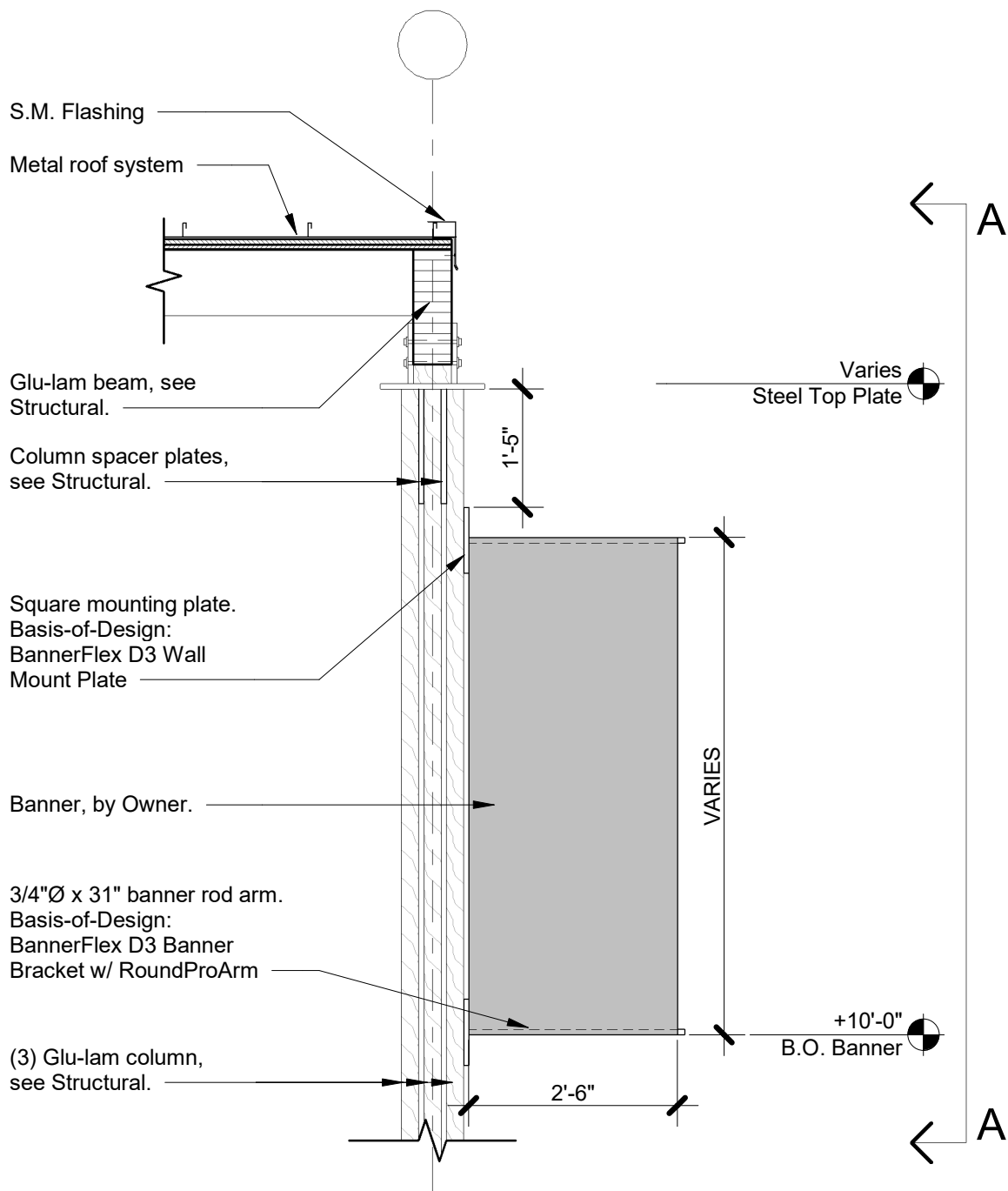
Wood Ceiling @ South Hall

PROJECT:
Senior Activity Center and Transit Center
Clovis Landmark Square
 735 Third Street, Clovis, CA 93612

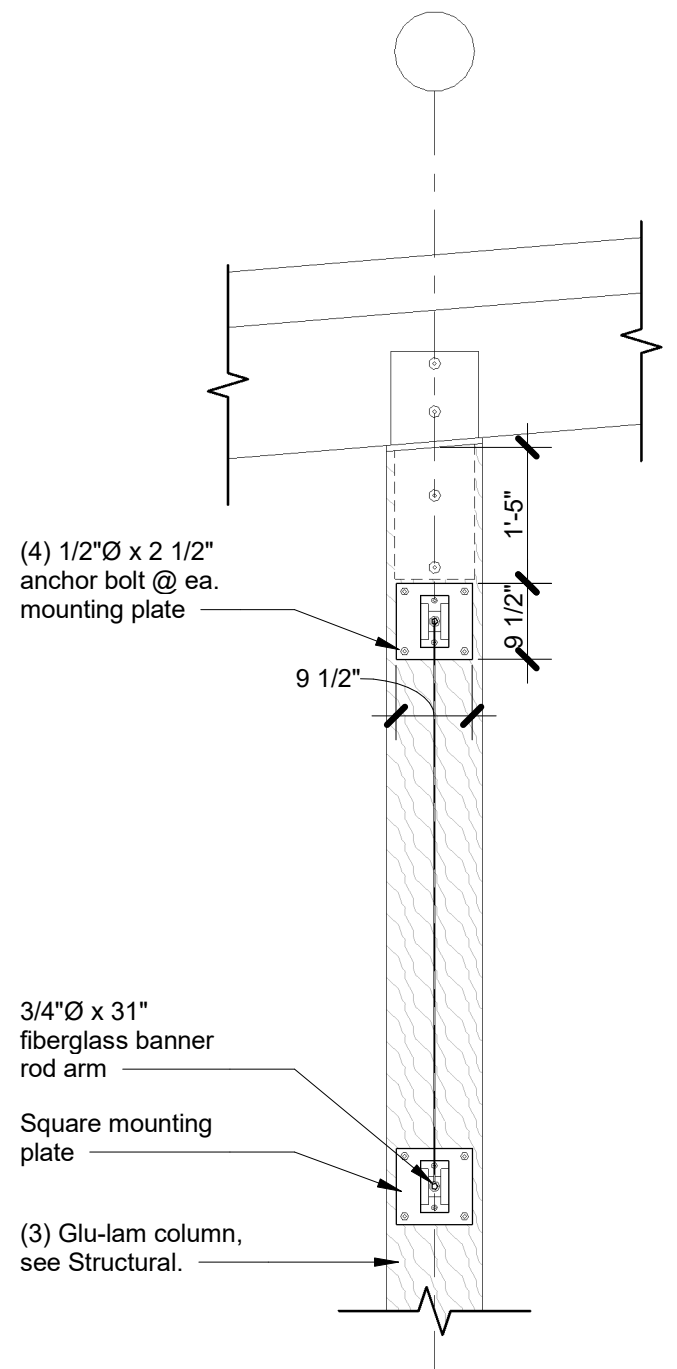
REFERENCE: N/A

PROJECT NUMBER:
 2016-39

SHEET NUMBER:
 AD1-11



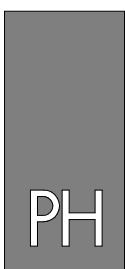
Elevation (typ.)



Elevation A-A

Column Mounted Vertical Banner

1/2" = 1'-0"



PAUL HALAJIAN ARCHITECTS

389 Clovis Ave, Suite 100
Clovis, CA 93612-1185
T: 559.297.7900 F: 559.297.7950
www.halajianarch.com

PAUL HALAJIAN ARCHITECTS expressly reserves its common law copyright and other property rights specifically related to the contents of these plans. This document and the ideas and designs incorporated herein, as an instrument of professional service rendered by PAUL HALAJIAN ARCHITECTS, is not to be used in whole or in part for any other project without prior written authorization from PAUL HALAJIAN ARCHITECTS.

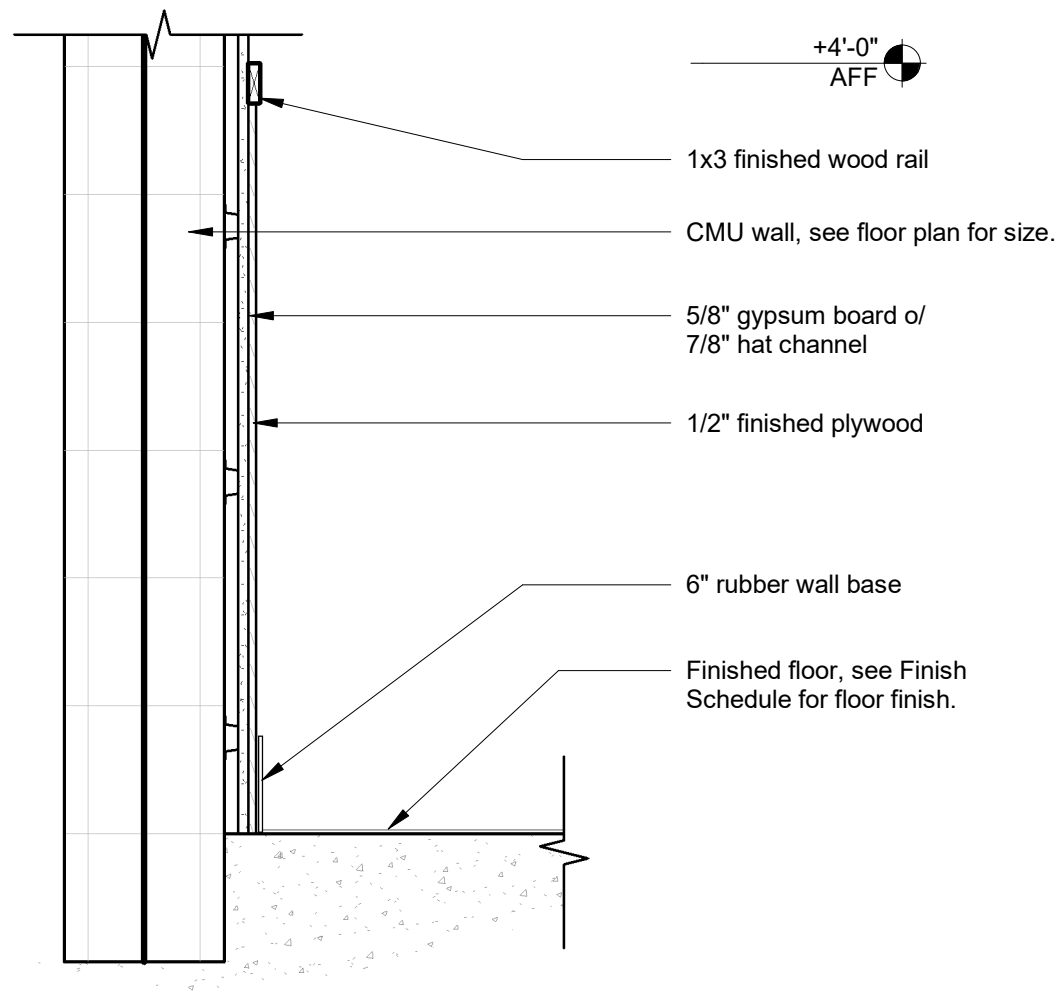
Column Mounted Vertical Banner

PROJECT:
Senior Activity Center and Transit Center
Clovis Landmark Square
735 Third Street, Clovis, CA 93612

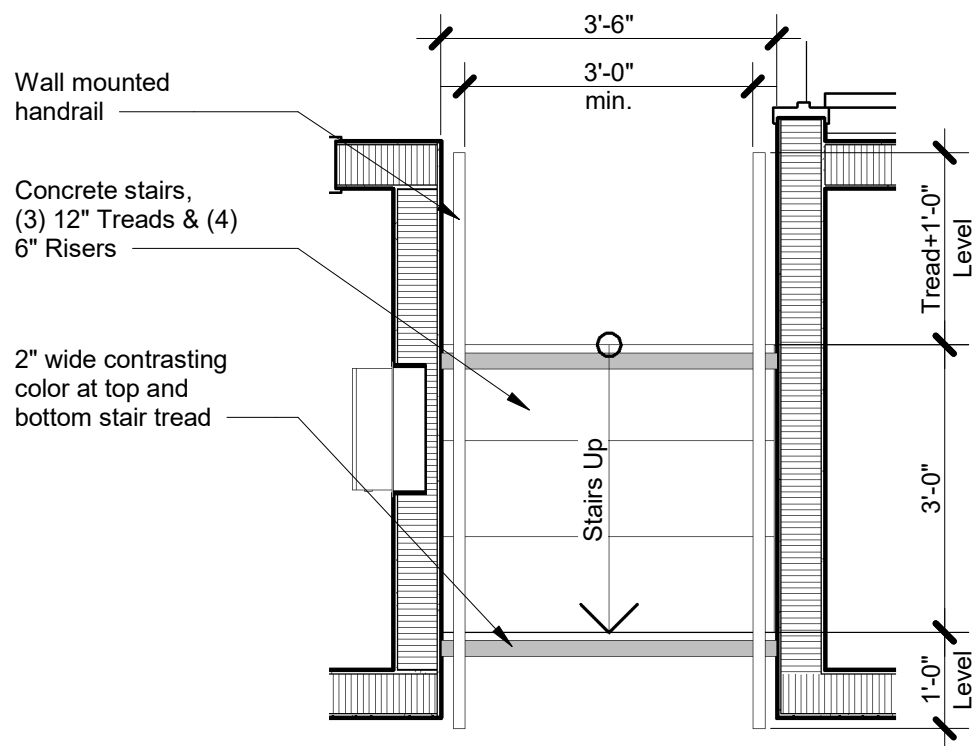
REFERENCE: N/A

PROJECT NUMBER:
2016-39

SHEET NUMBER:
AD1-12

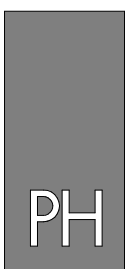


② SC - Wood Wainscot
1" = 1'-0"



① SC - Plan @ Stage Stair
1/2" = 1'-0"

REFERENCE: 5/A912



PAUL HALAJIAN ARCHITECTS

389 Clovis Ave, Suite 100
Clovis, CA 93612-1185
T: 559.297.7900 F: 559.297.7950
www.halajianarch.com

PAUL HALAJIAN ARCHITECTS expressly reserves its common law copyright and other property rights specifically related to the contents of these plans. This document and the ideas and designs incorporated herein, as an instrument of professional service rendered by PAUL HALAJIAN ARCHITECTS, is not to be used in whole or in part for any other project without prior written authorization from PAUL HALAJIAN ARCHITECTS.

Interior Details

PROJECT:

Senior Activity Center and Transit Center
Clovis Landmark Square

735 Third Street, Clovis, CA 93612

REFERENCE:

PROJECT NUMBER:
2016-39

SHEET NUMBER:
AD1-14



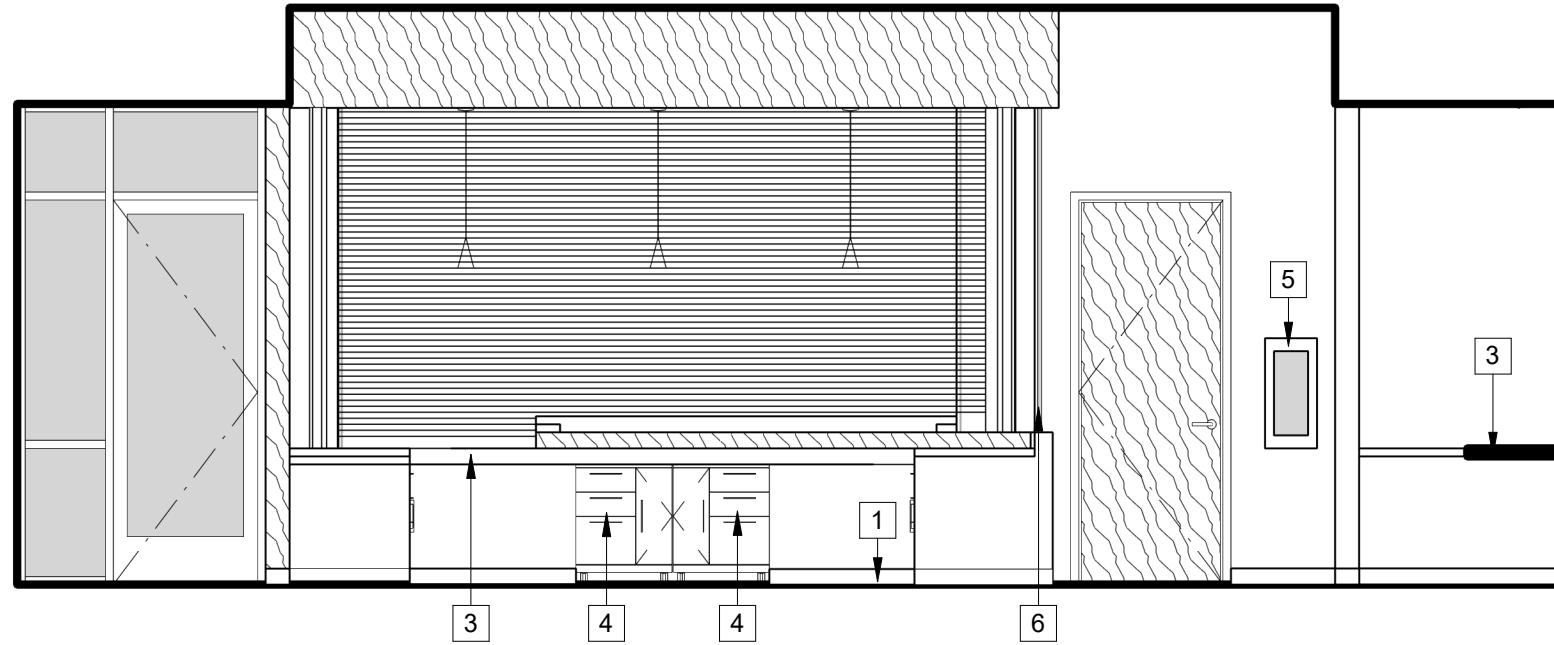
PAUL HALAJIAN ARCHITECTS

389 Clovis Ave, Suite 100
Clovis, CA 93612-1185
T: 559.297.7900 F: 559.297.7950
www.halajianarch.com

PAUL HALAJIAN ARCHITECTS expressly reserves its common law copyright and other property rights specifically related to the contents of these plans. This document and the ideas and designs incorporated herein, as an instrument of professional service rendered by PAUL HALAJIAN ARCHITECTS, is not to be used in whole or in part for any other project without prior written authorization from PAUL HALAJIAN ARCHITECTS.

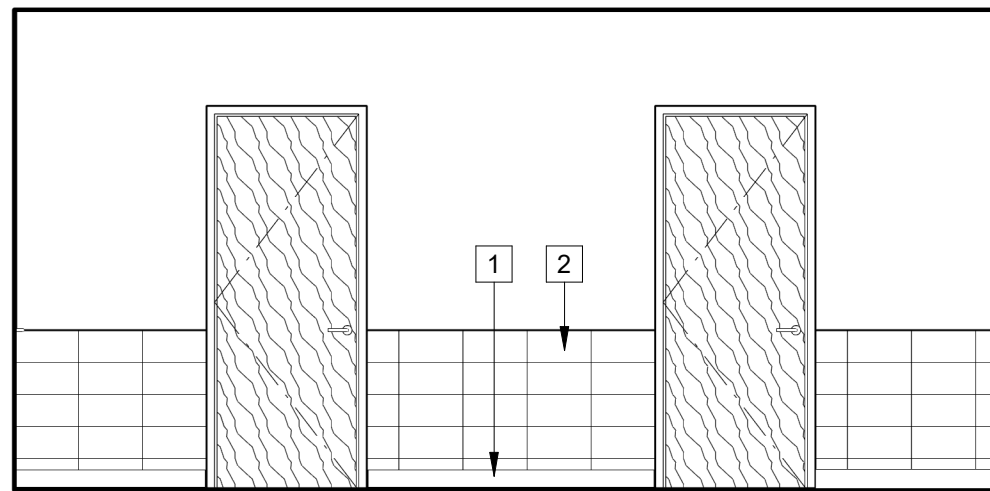
KEYNOTES

- 1 Wall base, Typ. See finish schedule sheet A731
- 2 3'-4"-High CMU Wainscot
- 3 Built-in reception desk. See casework details sheet A911.
- 4 Furniture by owner, NIC.
- 5 Fire Extinguisher Cabinet. See 18/A912.
- 6 Security Glass Wall



② 121 Open Office - c
1/4" = 1'-0"

REFERENCE: 11/A801



① 153 Hall - b
1/4" = 1'-0"

REFERENCE: 2/A809

PROJECT:
Clovis Landmark Square
Senior Activity Center and Transit Center
 735 Third Street, Clovis, CA 93612
SHEET: Interior Elevation - 153 Hall - b

DRAWING SET INFORMATION:

06/19/2020 Plan Check Submittal

REVISIONS:

NO.	DATE	DESCRIPTION
1	08/12/2020	Plan Check Revisions
2	10/08/2020	Addendum #1

PROJECT NUMBER:

2016-39

SHEET NUMBER:

AD1-15



PAUL HALAJIAN ARCHITECTS

389 Clovis Ave, Suite 100
Clovis, CA 93612-1185
T: 559.297.7900 F: 559.297.7950
www.halajianarch.com

PAUL HALAJIAN ARCHITECTS expressly reserves its common law copyright and other property rights specifically related to the contents of these plans. This document and the ideas and designs incorporated herein, are an instrument of professional service rendered by PAUL HALAJIAN ARCHITECTS, its not to be used in whole or in part for any other project without prior written authorization from PAUL HALAJIAN ARCHITECTS.

PROJECT:
Clovis Landmark Square
Senior Activity Center and Transit Center
735 Third Street, Clovis, CA 93612
SHEET: Interior Elevation - 201 Waiting Room c

DRAWING SET INFORMATION:

06/19/2020 Plan Check Submittal

REVISIONS:

1	08/12/2020	Plan Check Revisions
2	10/08/2020	Addendum #1

PROJECT NUMBER:

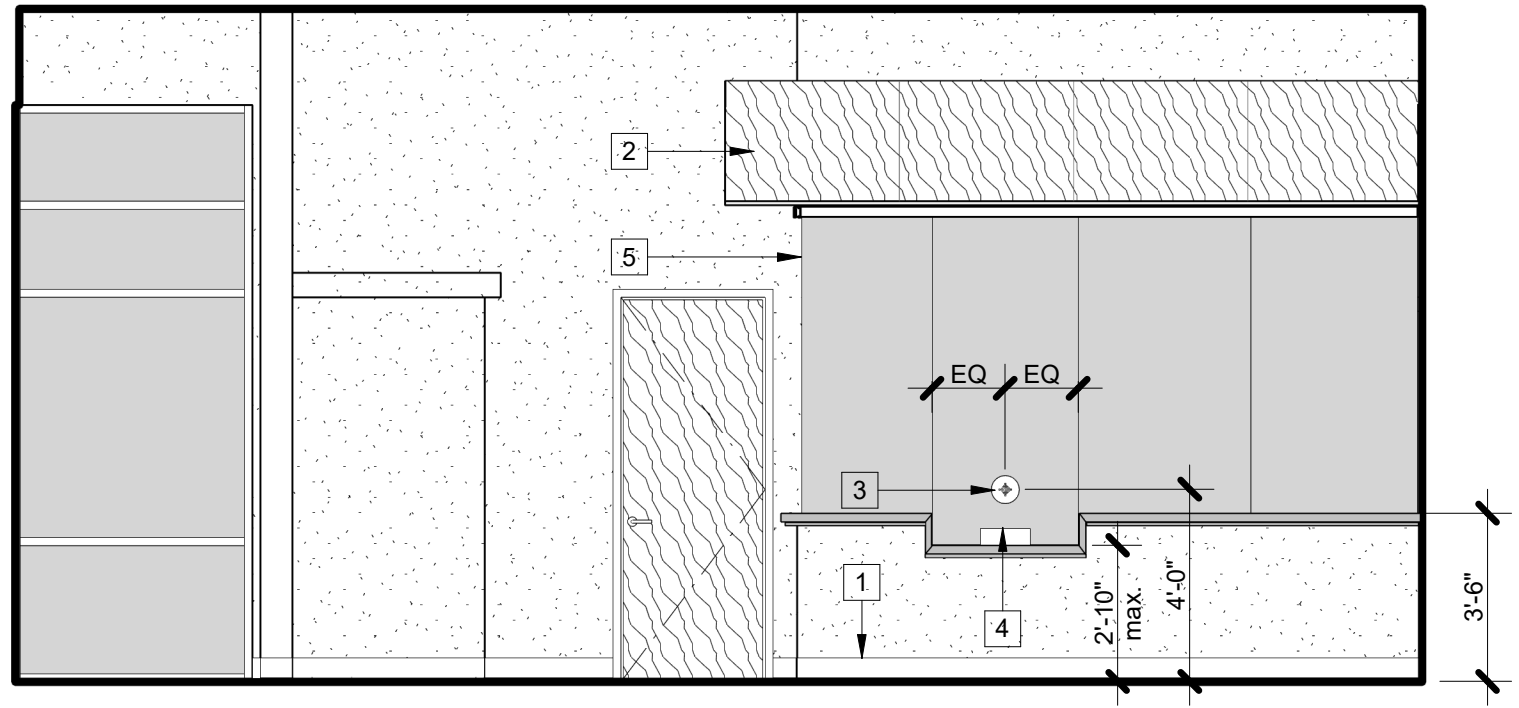
2016-39

SHEET NUMBER:

AD1-16

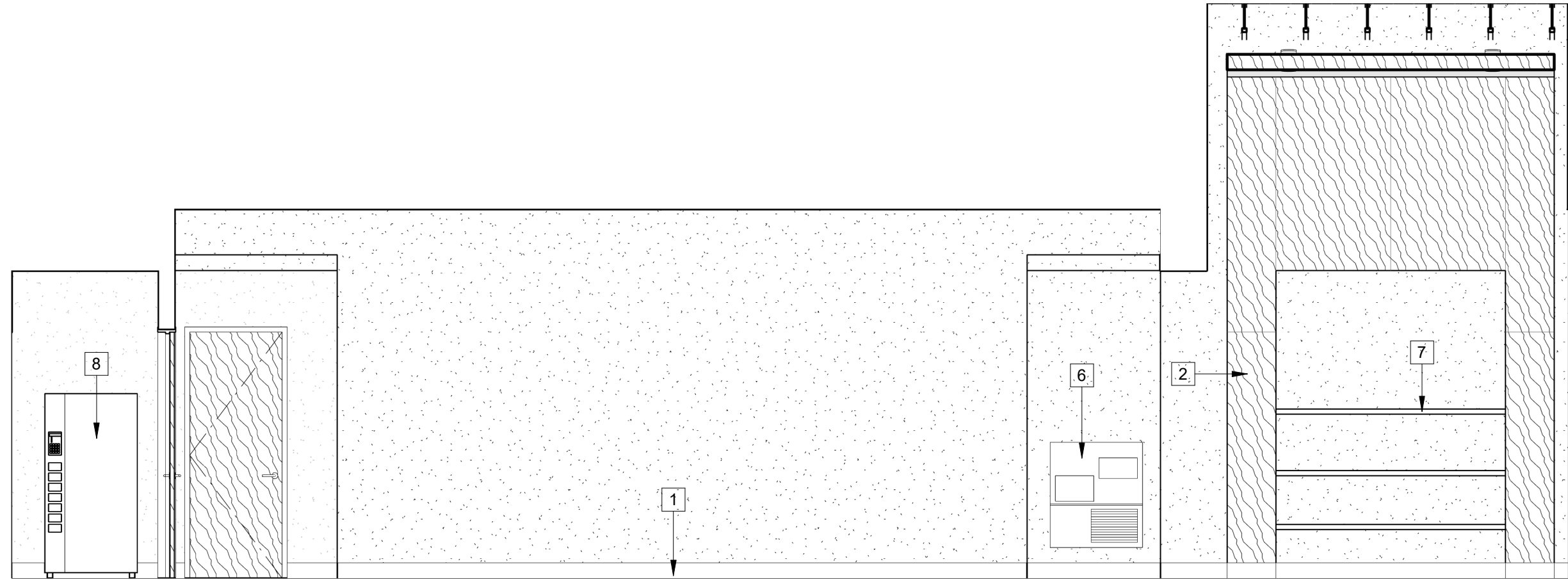
KEYNOTES

- 1 Wall base, Typ. See finish schedule sheet A731
- 2 Wood paneling. See Finish Schedules, (A700 sheets)
- 3 Speak-Thru
- 4 Pass-Thru
- 5 Security Glass Wall
- 6 Drinking fountain.
- 7 Built-in custom shelving, typ.
- 8 Vending machine by owner for reference only. See Electrical drawings.



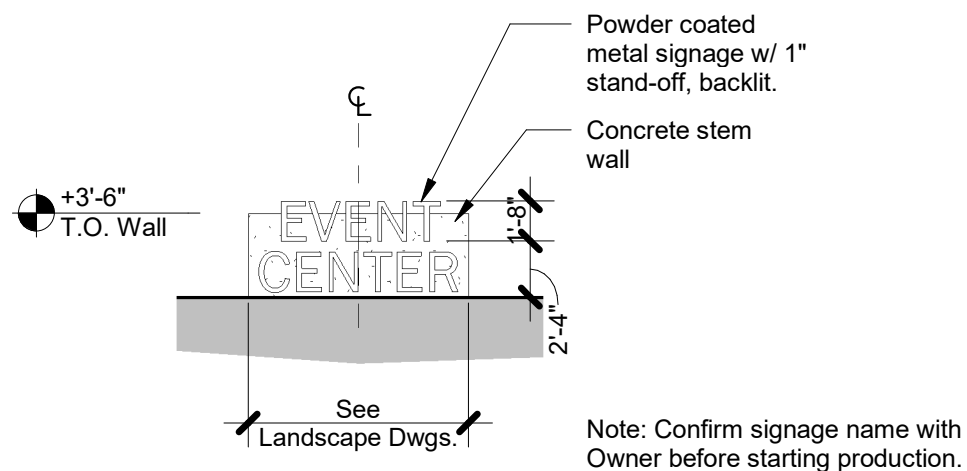
1 201 Waiting Room - c
1/4" = 1'-0"

REFERENCE: 7/A810

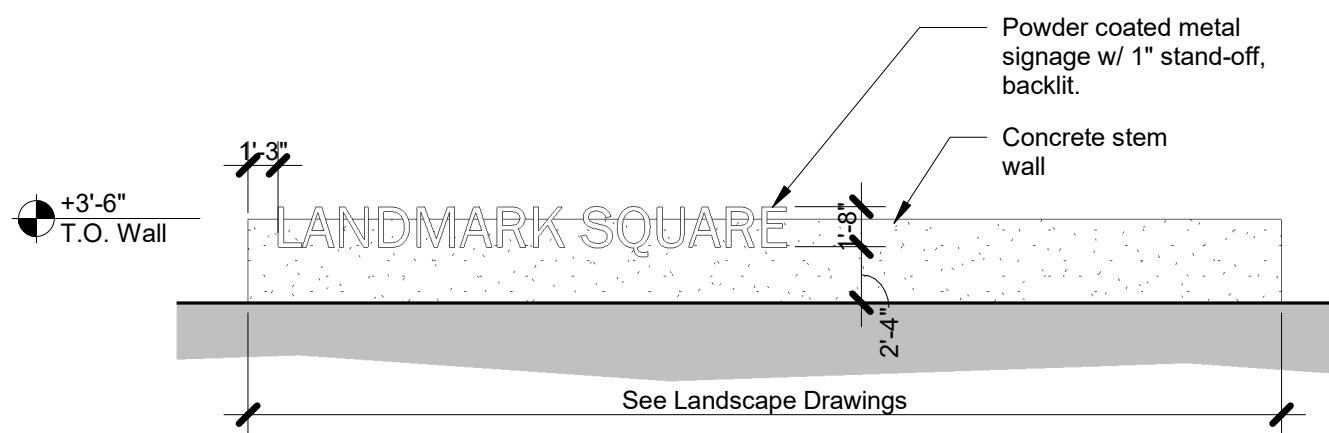


2 214 Hall - a
1/4" = 1'-0"

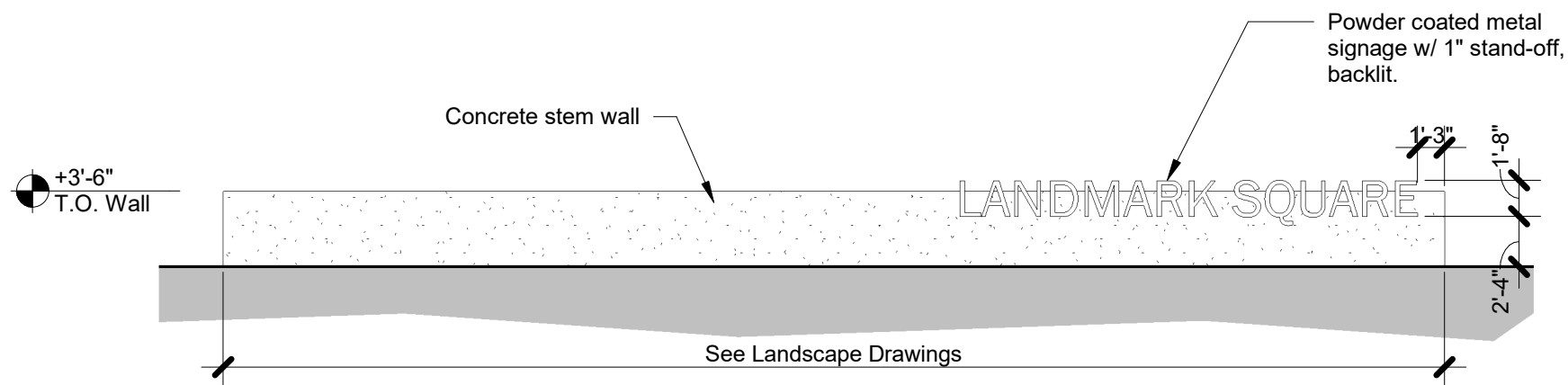
REFERENCE: 13/A811



North Monument Sign

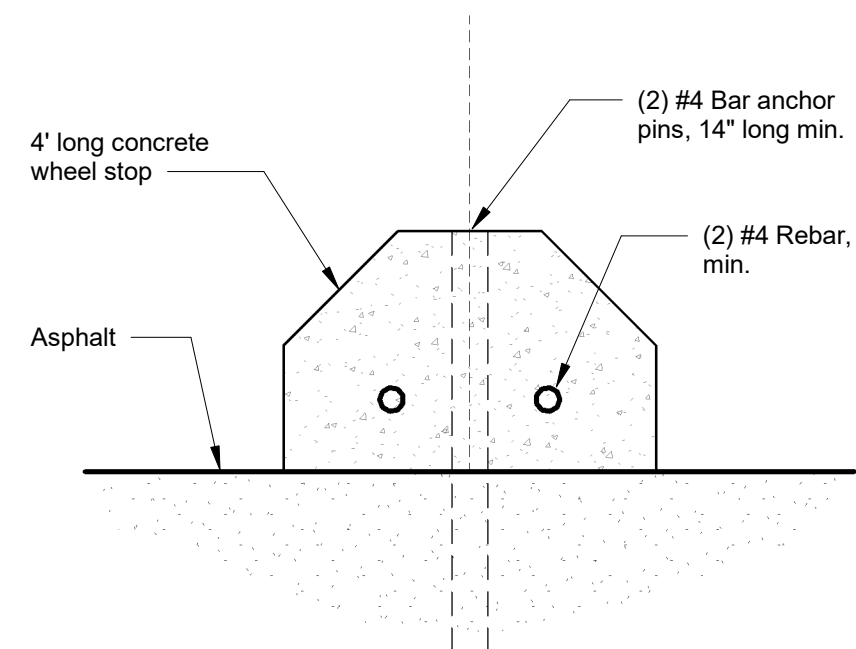


East Monument Sign



West Monument Sign

1 Concrete Monument Signs
1/8" = 1'-0"



2 Wheel Stop, typ.
3" = 1'-0"

REFERENCE: 11/A101



PAUL HALAJIAN ARCHITECTS

389 Clovis Ave, Suite 100
Clovis, CA 93612-1185
T: 559.297.7900 F: 559.297.7950
www.halajianarch.com

PAUL HALAJIAN ARCHITECTS expressly reserves its common law copyright and other property rights specifically related to the contents of these plans. This document and the ideas and designs incorporated herein, are an instrument of professional service rendered by PAUL HALAJIAN ARCHITECTS, it is not to be used in whole or in part for any other project without prior written authorization from PAUL HALAJIAN ARCHITECTS.

PROJECT:
Clovis Landmark Square
Senior Activity Center and Transit Center
735 Third Street, Clovis, CA 93612
SHEET: Site Details

DRAWING SET INFORMATION:

06/19/2020 Plan Check Submittal

REVISIONS:

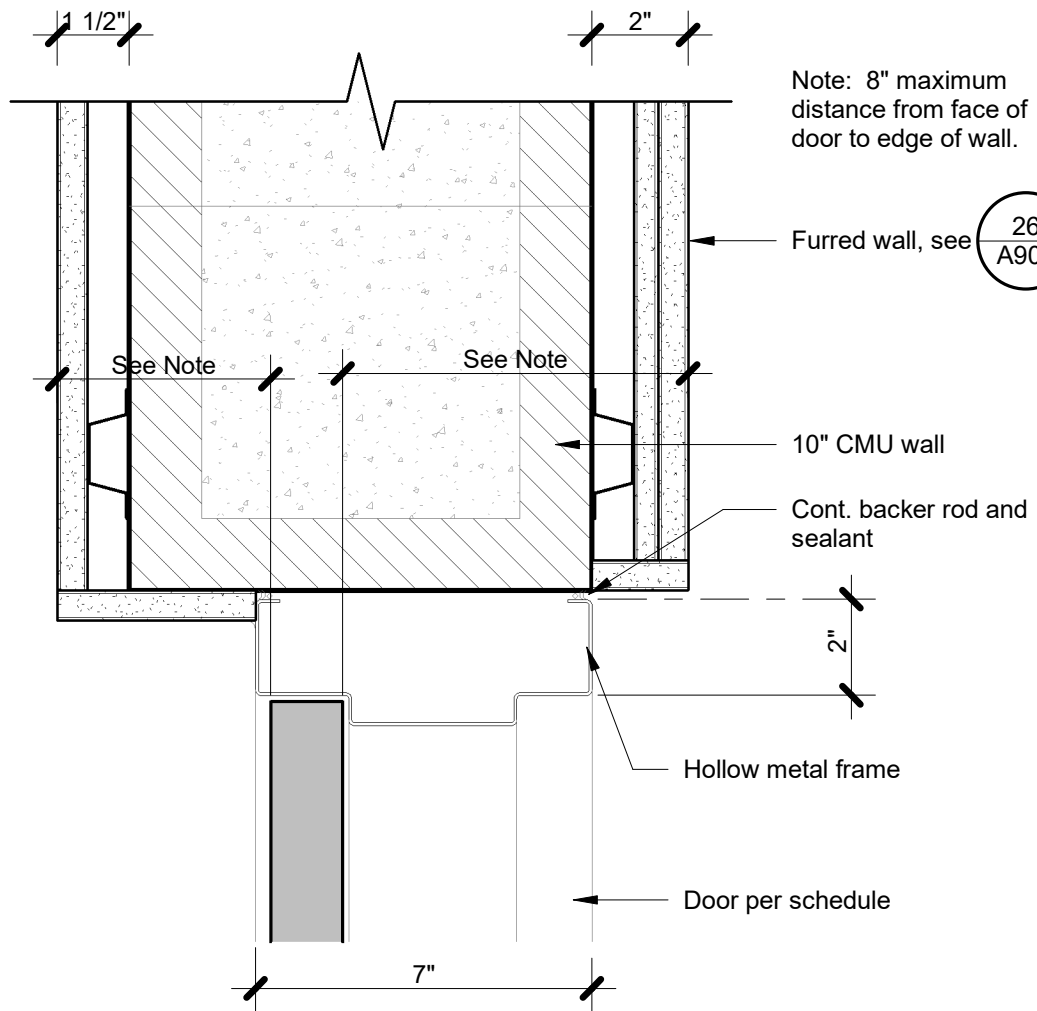
NO.	DATE	DESCRIPTION
1	08/12/2020	Plan Check Revisions
2	10/08/2020	Addendum #1

PROJECT NUMBER:

2016-39

SHEET NUMBER:

AD1-17



Int. HM Door Head w/ Furring - 10" CMU

3" = 1'-0"



**PAUL HALAJIAN
ARCHITECTS**

389 Clovis Ave, Suite 100
Clovis, CA 93612-1185
T: 559.297.7900 F: 559.297.7950
www.halajianarch.com

PAUL HALAJIAN ARCHITECTS expressly reserves its common law copyright and other property rights specifically related to the contents of these plans. This document and the ideas and designs incorporated herein, as an instrument of professional service rendered by PAUL HALAJIAN ARCHITECTS, is not to be used in whole or in part for any other project without prior written authorization from PAUL HALAJIAN ARCHITECTS.

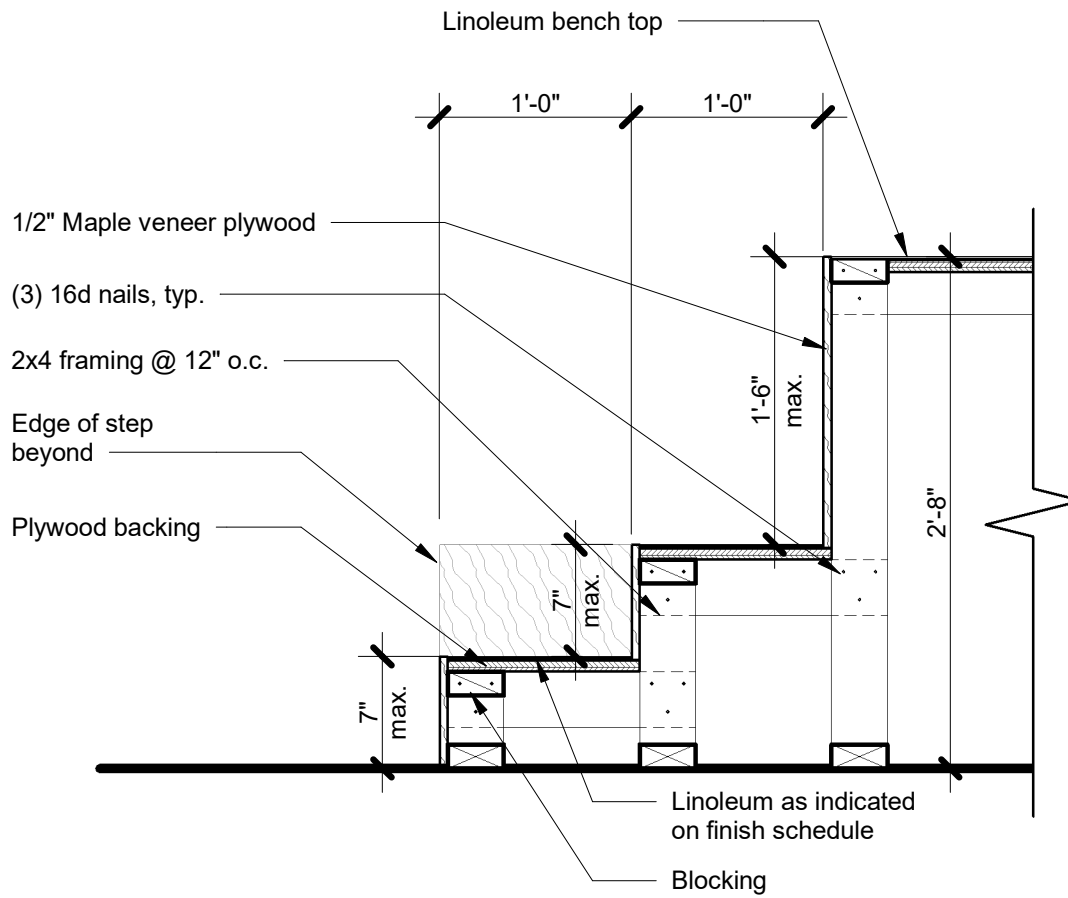
Interior HM Door Head w/ Furring

PROJECT:
Senior Activity Center and Transit Center
Clovis Landmark Square
735 Third Street, Clovis, CA 93612

REFERENCE: 13/A901

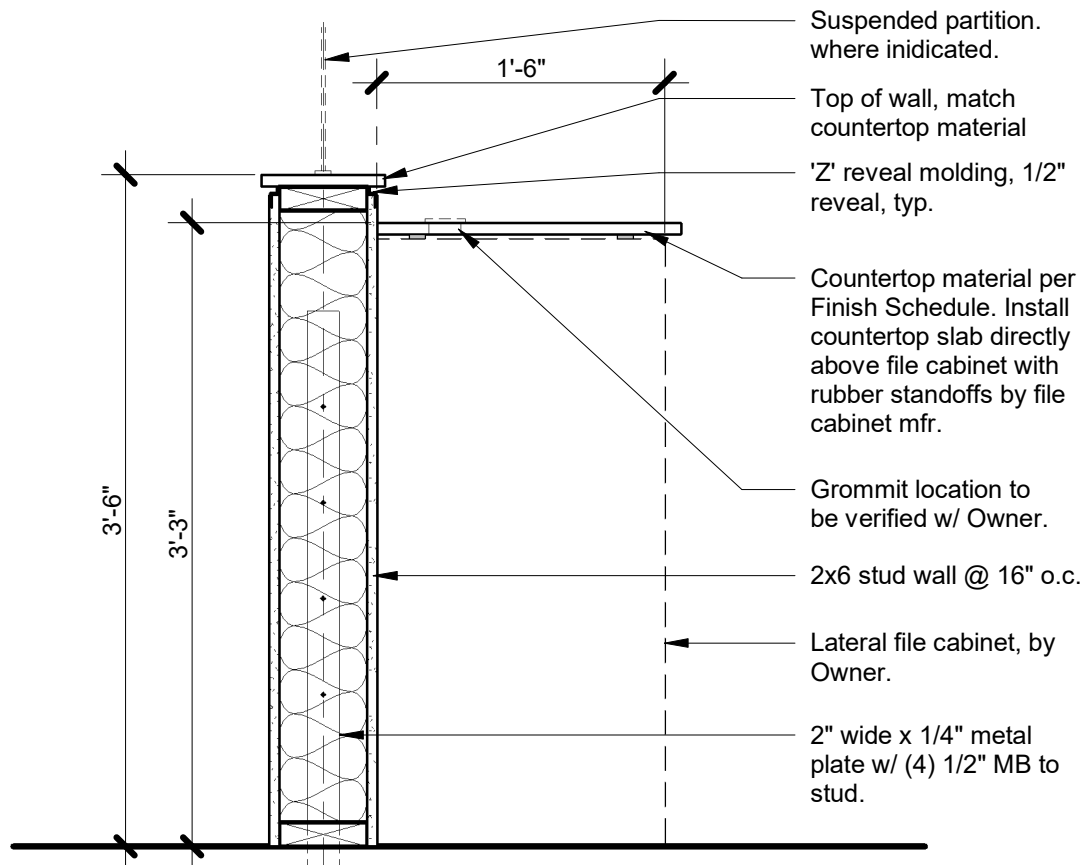
PROJECT NUMBER:
2016-39

SHEET NUMBER:
AD1-19



② SC - Billiard Seating @ Steps
1" = 1'-0"

REFERENCE: 17/A911



ISLANDS @ SC AND TC OPEN OFFICE

① Work Island Countertop at Partial Height Wall
1" = 1'-0"

REFERENCE: 6/A911



PAUL HALAJIAN ARCHITECTS

389 Clovis Ave, Suite 100
Clovis, CA 93612-1185
T: 559.297.7900 F: 559.297.7950
www.halajianarch.com

PAUL HALAJIAN ARCHITECTS expressly reserves its common law copyright and other property rights specifically related to the contents of these plans. This document and the ideas and designs incorporated herein, as an instrument of professional service rendered by PAUL HALAJIAN ARCHITECTS, is not to be used in whole or in part for any other project without prior written authorization from PAUL HALAJIAN ARCHITECTS.

Casework Details

PROJECT:

Senior Activity Center and Transit Center
Clovis Landmark Square

735 Third Street, Clovis, CA 93612

REFERENCE:

PROJECT NUMBER:

2016-39

SHEET NUMBER:

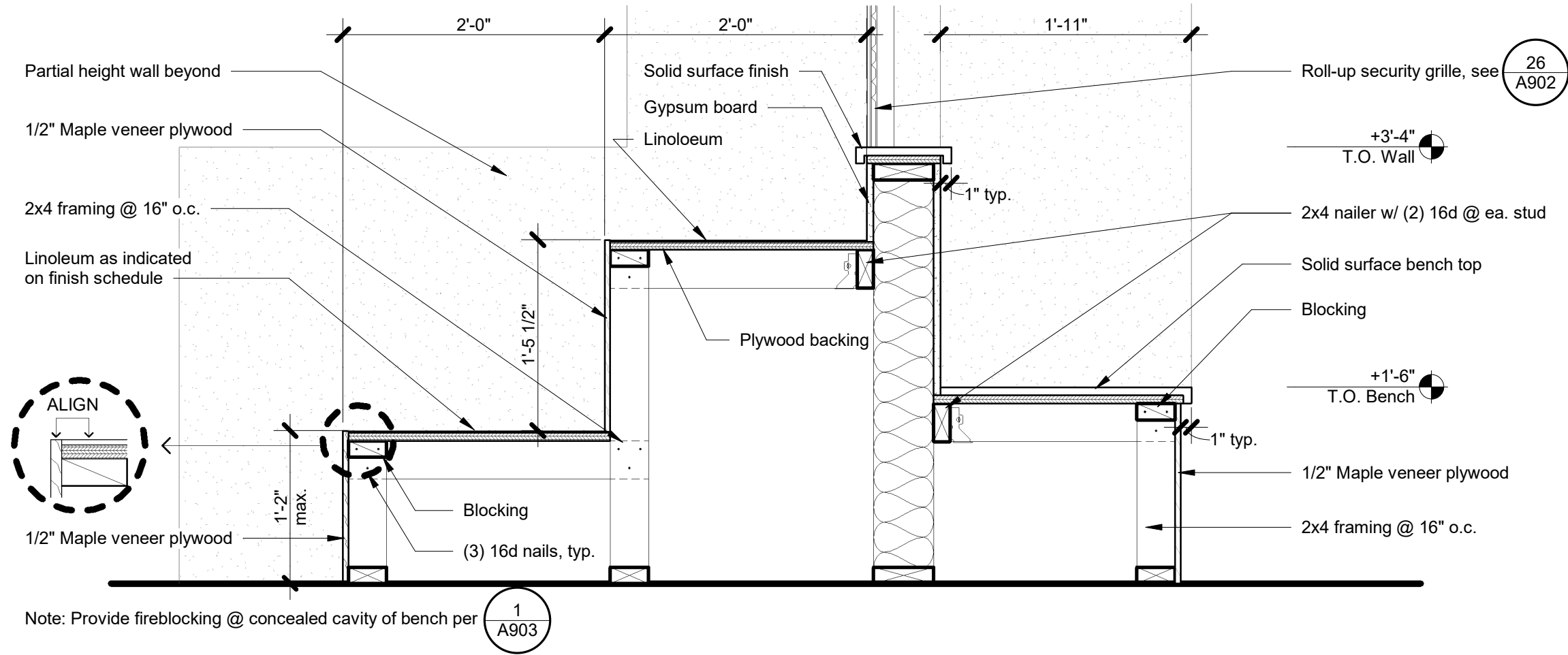
AD1-20



PAUL HALAJIAN ARCHITECTS

389 Clovis Ave, Suite 100
Clovis, CA 93612-1185
T: 559.297.7900 F: 559.297.7950
www.halajianarch.com

PAUL HALAJIAN ARCHITECTS expressly reserves its common law copyright and other property rights specifically related to the contents of these plans. This document and the ideas and designs incorporated herein, as an instrument of professional service rendered by PAUL HALAJIAN ARCHITECTS, is not to be used in whole or in part for any other project without prior written authorization from PAUL HALAJIAN ARCHITECTS.



SC - Billiard Seating

1" = 1'-0"

REFERENCE: 16/A911

PROJECT:
Clovis Landmark Square
Senior Activity Center and Transit Center
735 Third Street, Clovis, CA 93612
SHEET: Casework Details

DRAWING SET INFORMATION:

06/19/2020 Plan Check Submittal

REVISIONS:

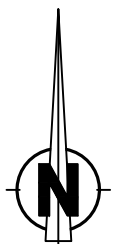
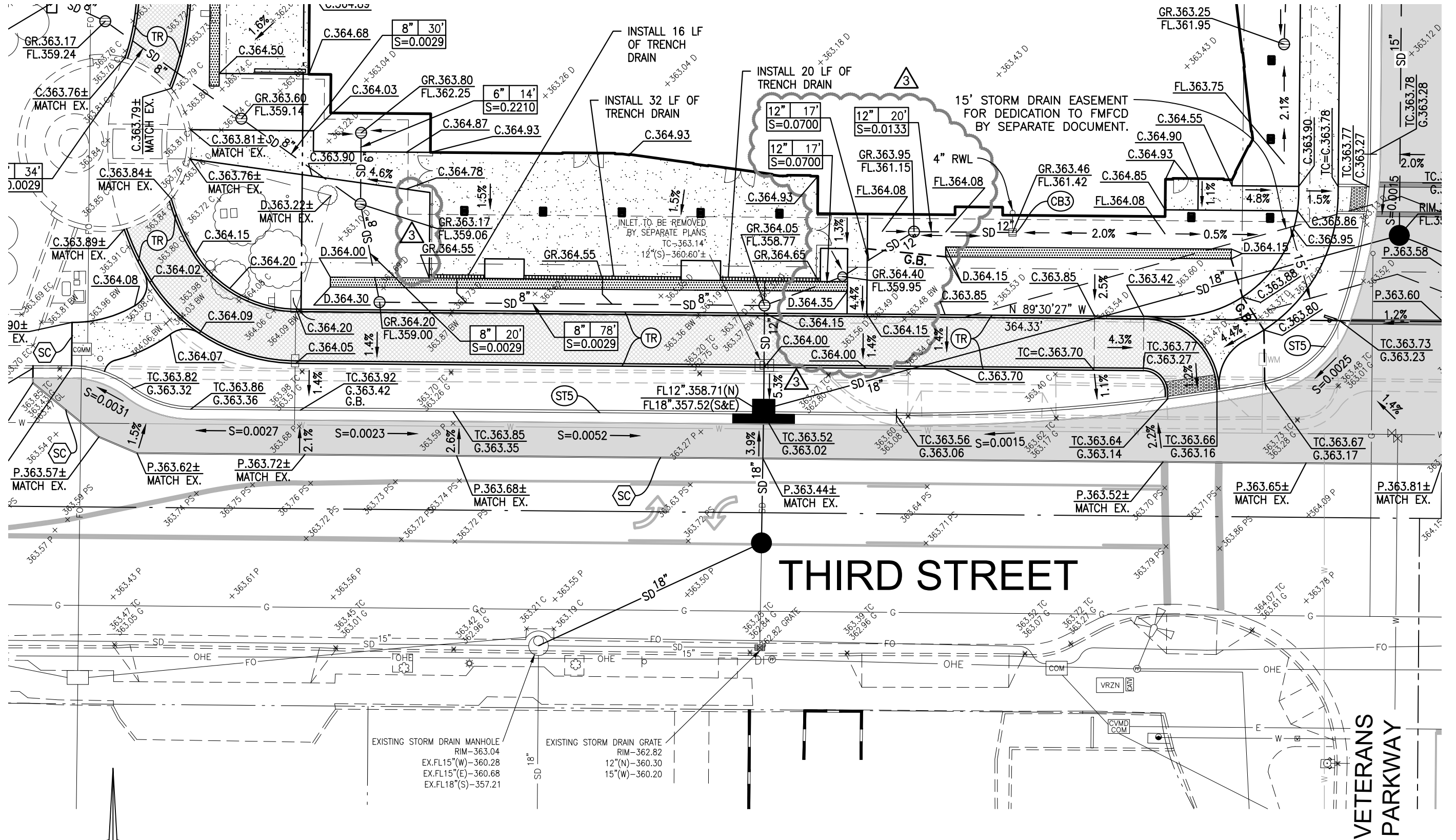
1	08/12/2020	Plan Check Revisions
2	10/08/2020	Addendum #1

PROJECT NUMBER:

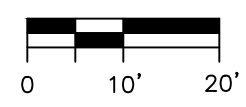
2016-39

SHEET NUMBER:

AD1-21



SCALE: 1" = 20'



THIRD STREET

VETERANS PARKWAY

EXISTING STORM DRAIN MANHOLE
RIM-363.04
EX.FL15"(W)-360.28
EX.FL15"(E)-360.68
EX.FL18"(S)-357.21

EXISTING STORM DRAIN GRATE
RIM-362.82
12"(N)-360.30
15"(W)-360.20

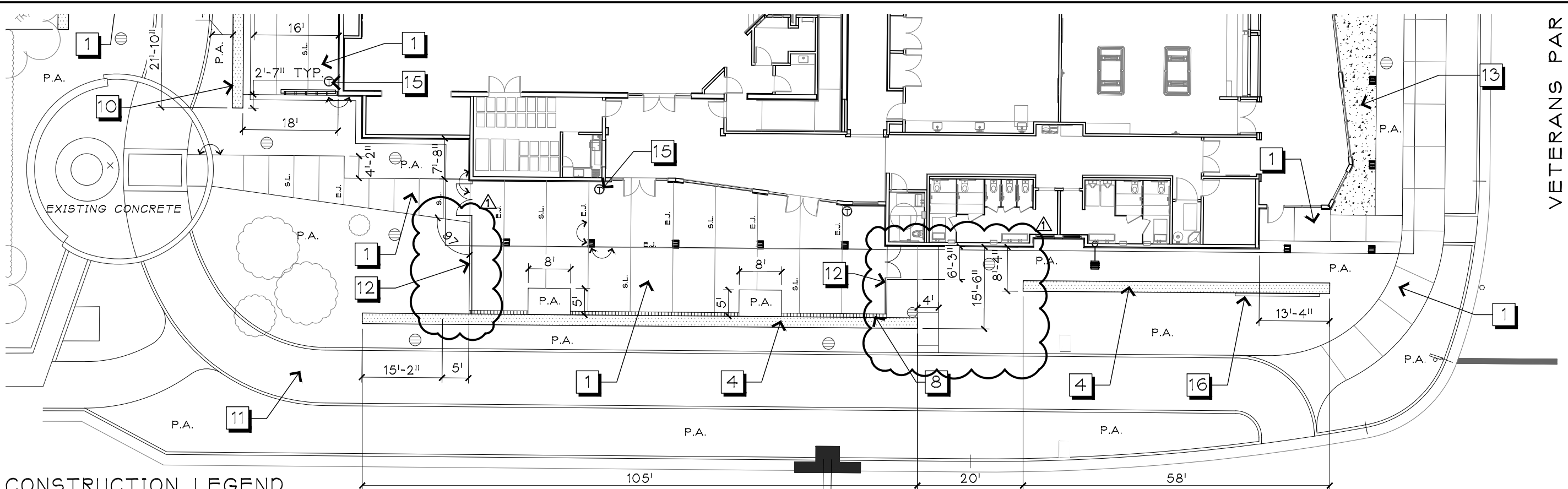
Landmark Square Addendum #2



Harbour & Associates
Civil Engineers
389 Clovis Avenue, Suite 300 • Clovis, California 93612
(559) 325-7676 • Fax (559) 325-7699 • e-mail ha_ce@mnsr.com

ADDENDUM #2
REVISIONS TO PATIO EXIT WALKS & GATES
10-27-20 J.S.

SCALE:
1"=20'
DATE:
10-27-20

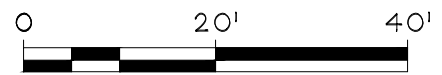
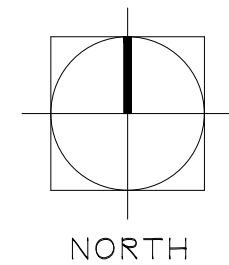


VETERANS PAR

CONSTRUCTION LEGEND

DET/SHT	SYM.	DESCRIPTION
A/18	1	PEDESTRIAN CONCRETE, COLOR: NATURAL, MEDIUM BROOM FINISH, SCORE AS SHOWN
B/18	2	METAL TRELLIS
E/18	3	P.I.P. SEAT WALL - 18" HT.
D/18	4	P.I.P. WALL - 42" HT.
C/18	5	CONCRETE STEPS WITH HANDRAILS
	6	RELOCATED SHADE STRUCTURE
	7	WAYFINDING SIGN, BY OTHERS
	8	LINEAR DRAIN (4" WIDTH), SEE CIVIL PLAN
A/23	9	DG WITH CURB @ TREE WELL, CORLOR: CALIFORNIA GOLD
H/18	10	P.I.P. SEAT WALL @ ELEV. CHANGE
	11	NEW ASPHALT TRAIL - SEE CIVIL PLAN
	12	CABLE FENCE WITH GATE, BY ARCHITECT
F/18	13	3/8" CRUSHED ROCK, COLOR: CALI GOLD, BY CLOVIS STONE www.clovisstone.net
	14	(2) BIKE RACK, MODEL: BRH, COLOR: BLACK, BY KINGS RIVER CASTING www.kingsrivercasting.com
	15	(9) TRASH RECEPTACLES, MODEL: 287-32, COLOR: TEXTURED GREY, BY DUMOR www.dumor.com
	16	PROJECT SIGNAGE - VERIFY LOCATION, MATERIALS AND FONT WITH OWNER
	17	(8) BENCHES, MODEL: IVBBC 72, COLOR: BLACK, BY KINGS RIVER CASTING www.kingsrivercasting.com

3RD STREET



SCALE: 1"=20'

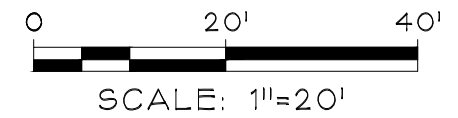
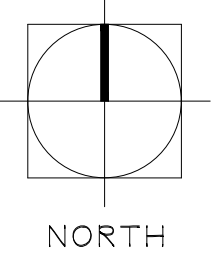
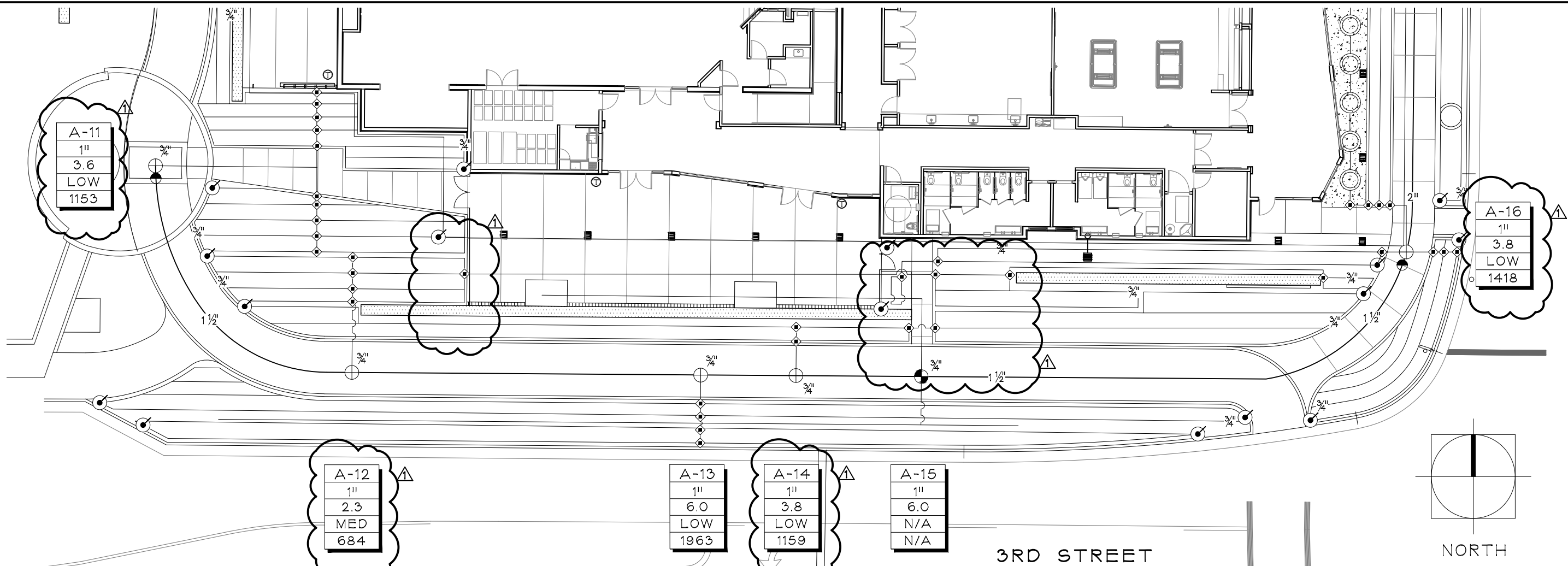
△ REVISED WALKWAY AND GATE LOCATION
 REMOVED WALKWAY



BROUSSARD ASSOCIATES
 landscape architects
 389 Clovis Ave., Suite 200
 Clovis, CA 93612
 T 559.325.7284
 F 559.325.7286

REVISIONS	
DATE	APPROVED
10-28-20	_____
△	_____
△	_____
△	_____
△	_____
△	_____

CITY OF CLOVIS		PLANNING AND DEVELOPMENT SERVICES
PROJECT TITLE LANDMARK SQUARE		PROJECT NO. CIP 15-03
SHEET DESCRIPTION ADDENDUM #2		SHEET NO. 1 OF 3



Maximum Applied Water Allowance Calculations for New and Rehabilitated Non-Residential Landscapes

Enter value in Pale Blue Cells
 Tan Cells Show Results
 Messages and Warnings

Click on the blue cell on right to Pick City Name
 ET_c of City from Appendix A

City	Name of City
Clovis	Clovis

ET_c of City from Appendix A: 51.40 (inches/year)

Overhead Landscape Area (ft²): 0

Drip Landscape Area (ft²): 20877

SLA (ft²): 0

Total Landscape Area: 20,877

Results:
 (ET_c × (0.62) × [(0.45 × LA) + (1.0 - 0.45) × SLA])

-	Gallons
-	Cubic Feet
-	HCF
-	Acre-feet
-	Millions of Gallons

MAWA calculation incorporating Effective Precipitation (Optional)
 Precipitation (Optional)

ET_c of City from Appendix A: 51 (inches/year)

Total Landscape Area: 20,877 (ft²)

Special Landscape Area: 0 (ft²)

13 Total annual precipitation (inches/year)

Enter Effective Precipitation: 3.25 (in/yr) (25% of total annual precipitation)

Results:
 MAWA = [(ET_c - Eppt) × (0.62)] × [(0.45 × LA) + ((1.0 - 0.45) × SLA)]

280,430	Gallons
37,488.20	Cubic Feet
374.88	HCF
0.86	Acre-feet
0.28	Millions of Gallons

Estimated Total Water Use

Equation: ET_{WU} = ET_c × 0.62 × [(PF × HA)ME] + SLA; Considering precipitation ETWA = (ET_c - Eppt) × 0.62 × [(PF × HA)ME] + SLA

Enter values in Pale Blue Cells
 Tan Cells Show Results
 Messages and Warnings

Hydrozone	Select System From the Dropdown List click on cell below	Plant Water Use Type (s) (low, medium, high)	Plant Factor (PF)	Hydrozone Area (HA) (ft ²) Without SLA	Irrigation Efficiency (IE)	(PF × HA (ft ²))IE
Zone 1	Drip	Medium	0.50	2,376	0.81	1,467
Zone 2	Drip	Low	0.20	18,501	0.81	4,568
SLA				0		0
Sum				20,877		6,035

Results
 MAWA = 280,430

Total Landscape Area including Special Landscape

ETWU = 180,139 Gallons
24,081 Cubic Feet
240.81 HCF
0.55 Acre-feet
0.18 Millions of Gallons

ETWU complies with MAWA

Landmark Commons Hydrozones

Hydrozone: Medium Water Use			Hydrozone: Low Water Use			Hydrozone: N/A (Tree)		
Station	SQ FT	Type	Station	SQ FT	Type	Station	SQ FT	Type
A-8	229	Drip	A-1	987	Drip	A-2	N/A	Bubbler
A-12	684	Drip	A-3	495	Drip	A-7	N/A	Bubbler
A-20	955	Drip	A-4	316	Drip	A-15	N/A	Bubbler
A-25	508	Drip	A-5	490	Drip	A-22	N/A	Bubbler
			A-6	490	Drip	A-26	N/A	Bubbler
			A-9	1,564	Drip			
			A-10	1,008	Drip			
			A-11	1,153	Drip			
			A-13	1,363	Drip			
			A-14	1,159	Drip			
			A-16	1,418	Drip			
			A-17	1,080	Drip			
			A-18	829	Drip			
			A-19	1,053	Drip			
			A-21	756	Drip			
			A-23	1,455	Drip			
			A-24	1,730	Drip			
			A-27	555	Drip			
Total	2,376		Total	18,501		Total	N/A	

▲ REVISED WALKWAY AND GATE LOCATION
 REMOVED WALKWAY
 WATER CALS. ADJUSTED FOR REVISION



BROUSSARD ASSOCIATES
 landscape architects
 389 Clovis Ave., Suite 200
 Clovis, CA 93612
 T 559.325.7284
 F 559.325.7286

REVISIONS

DATE	APPROVED
▲ 10-28-20	
▲	
▲	
▲	
▲	
▲	

CITY OF CLOVIS

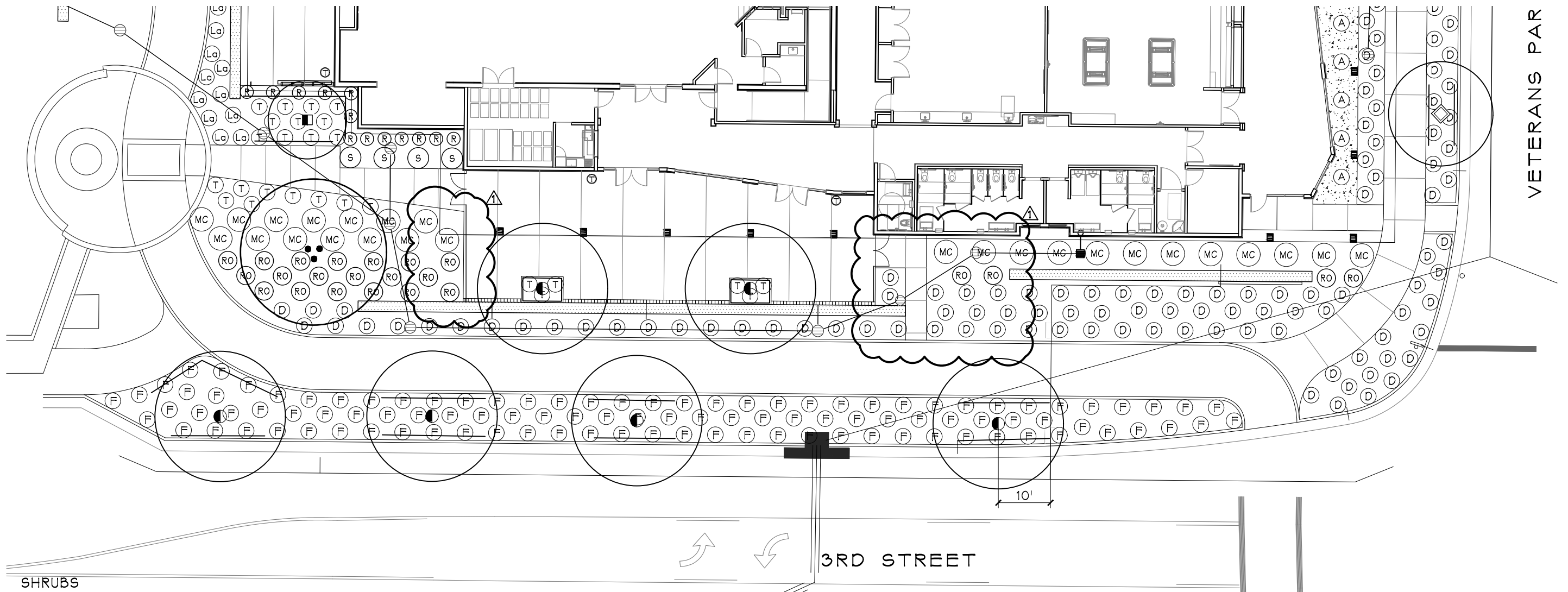
PLANNING AND DEVELOPMENT SERVICES

PROJECT TITLE
 LANDMARK SQUARE

PROJECT NO.
 CIP 15-03

SHEET DESCRIPTION
 ADDENDUM #2

SHEET NO.
 2 OF 3

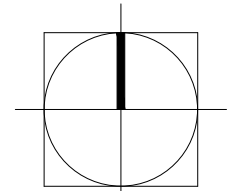


VETERANS PAR

3RD STREET

SHRUBS

A	5 GAL	AGAVE DESERTI / DESERT AGAVE	AS SHOWN	LOW	19
C	1 GAL	CYRTOMIUM FALCATUM / HOLLY FERN	AS SHOWN	MED	66
D	1 GAL	DIANELLA R. 'COOL VISTA' / DIANELLA COOL VISTA	AS SHOWN	LOW	374
E	1 GAL	EUONYMUS JAPONICUS / DIANELLA COOL VISTA	AS SHOWN	LOW	58
F	1 GAL	FESTUCA MAIREI / ATLAS FESCUE	AS SHOWN	LOW	133
H	5 GAL	HESPERALOE PARVIFLORA / RED YUCCA	AS SHOWN	LOW	19
Lq	1 GAL	LANTANA X 'NEW GOLD' / NEW GOLD LANTANA	AS SHOWN	MED	21
L	5 GAL	LAURUS NOBILIS 'COLUMNAR' / SWEET BAY LAUREL	AS SHOWN	LOW	60
Mc	1 GAL	MUHLENBERGIA CAPILLARIS / PINK MUHLY	AS SHOWN	LOW	49
Mu	1 GAL	MUHLENBERGIA DUBIA / PINE MUHLY GRASS	AS SHOWN	LOW	48
RO	5 GAL	ROSA 'ICEBERG' / ICEBERG ROSE	AS SHOWN	MED	74
R	5 GAL	ROSMARINUS 'TUSCAN BLUE' / ROSEMARY	AS SHOWN	LOW	58
S	5 GAL	SALVIA LEUCANTHA / MEXICAN BUSH SAGE	AS SHOWN	LOW	21
T	1 GAL	TEUCRIUM CHAMAEDRYIS / WALL GERMANDER	AS SHOWN	LOW	

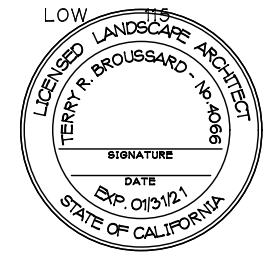


NORTH



SCALE: 1"=20'

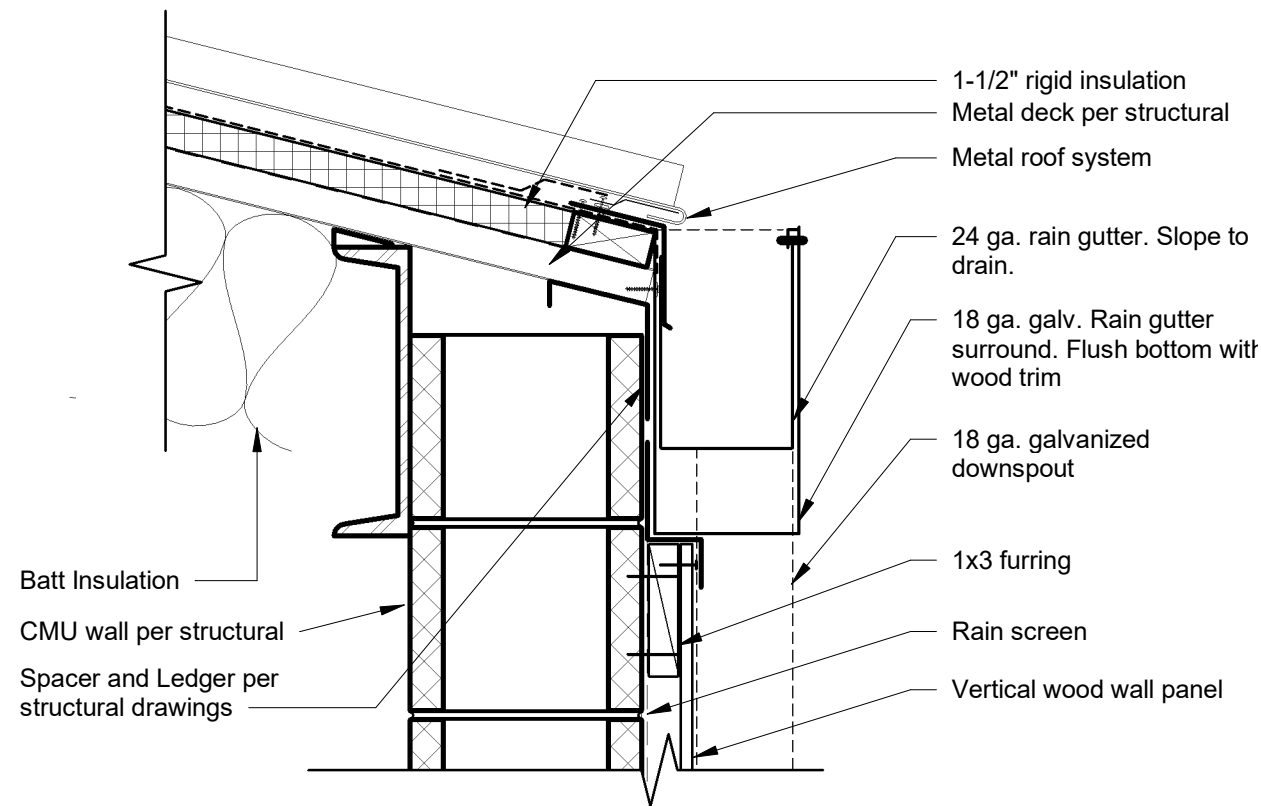
▲ REVISED WALKWAY AND GATE LOCATION
 REMOVED WALKWAY
 PLANT COUNTS ADJUSTED FOR REVISION



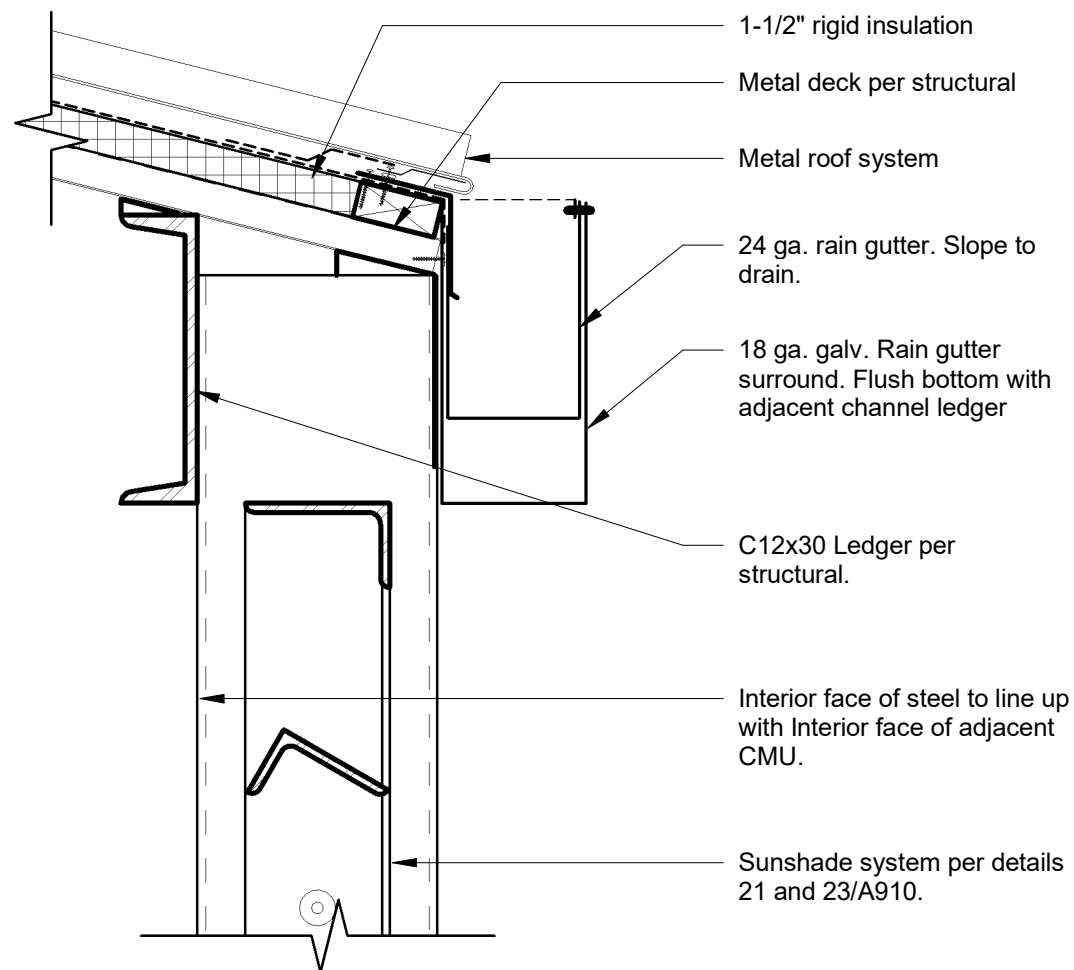
BROUSSARD ASSOCIATES
 landscape architects
 389 Clovis Ave., Suite 200
 Clovis, CA 93612
 T 559.325.7284
 F 559.325.7286

REVISIONS		
DATE	APPROVED	
10-28-20		▲
		▲
		▲
		▲
		▲
		▲

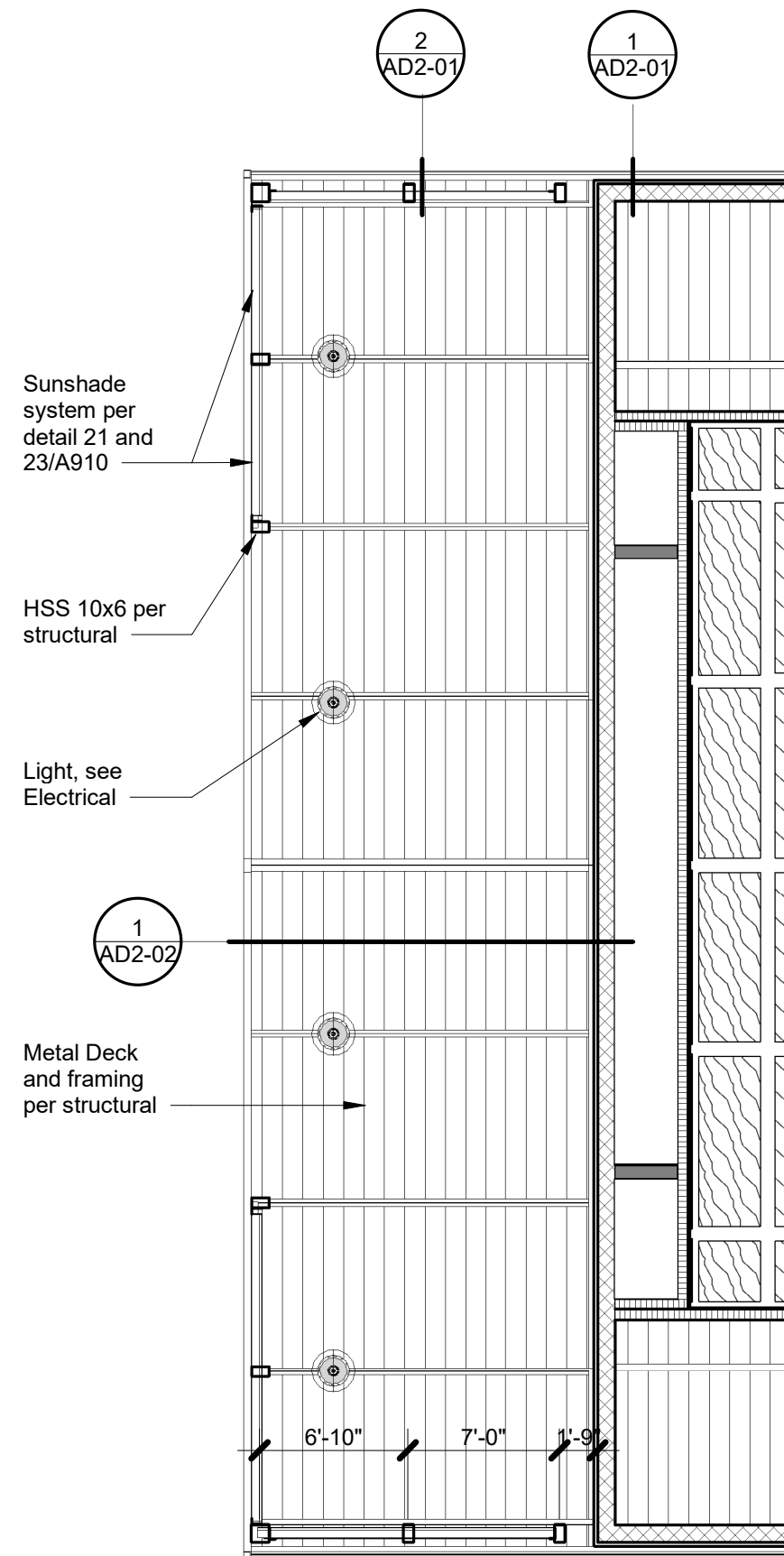
CITY OF CLOVIS		PLANNING AND DEVELOPMENT SERVICES
PROJECT TITLE LANDMARK SQUARE		PROJECT NO. CIP 15-03
SHEET DESCRIPTION ADDENDUM #2		SHEET NO. 3 OF 3



1 AD2-Eave at High Roof
1 1/2" = 1'-0"



2 AD2-Eave at High Roof Open Canopy
1 1/2" = 1'-0"



4 Senior Center - Partial Reflected Ceiling Plan
1/8" = 1'-0"



PAUL HALAJIAN ARCHITECTS

389 Clovis Ave, Suite 100
Clovis, CA 93612-1185
T: 559.297.7900 F: 559.297.7950
www.halajianarch.com

PAUL HALAJIAN ARCHITECTS expressly reserves its common law copyright and other property rights specifically related to the contents of these plans. This document and the ideas and designs incorporated herein, as an instrument of professional service rendered by PAUL HALAJIAN ARCHITECTS, is not to be used in whole or in part for any other project without prior written authorization from PAUL HALAJIAN ARCHITECTS.

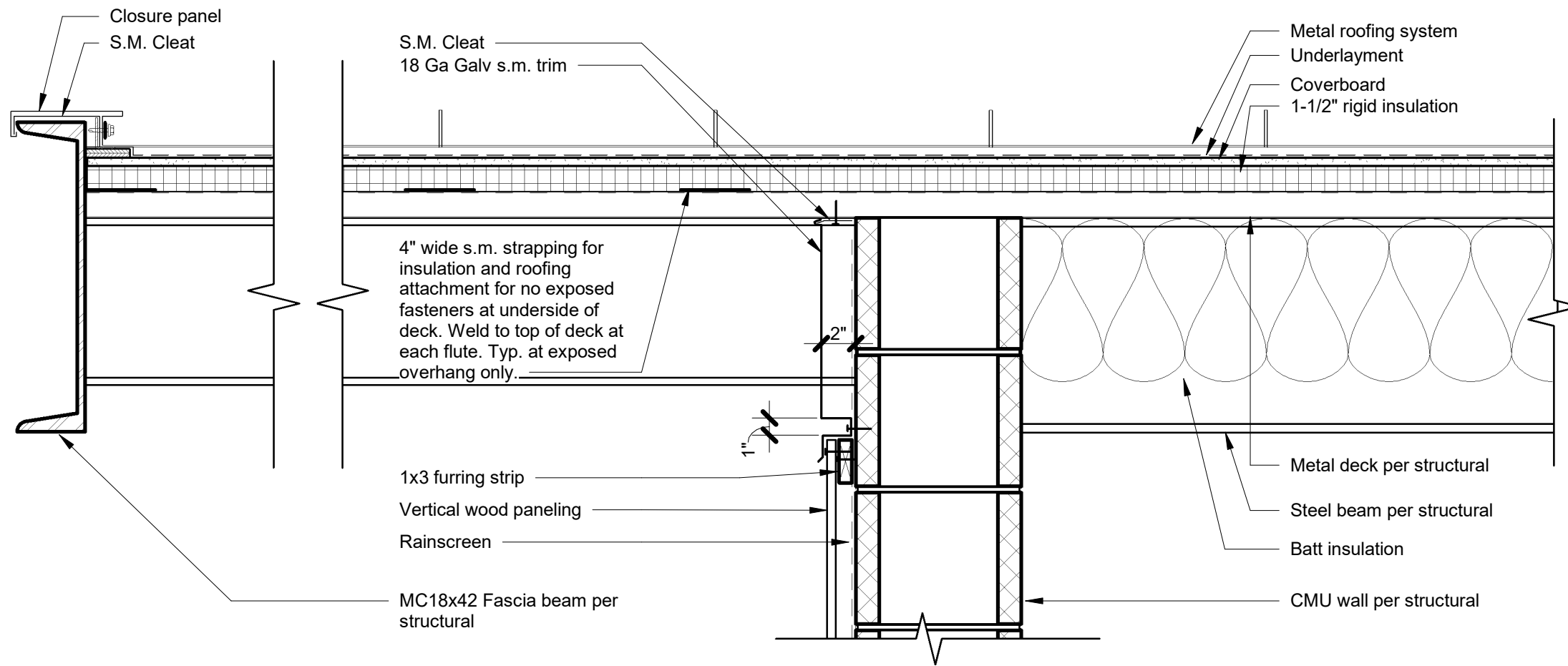
PROJECT:
Clovis Landmark Square
Senior Activity Center and Transit Center
735 Third Street, Clovis, CA 93612
SHEET: High Roof at Multi-Purpose

DRAWING SET INFORMATION:

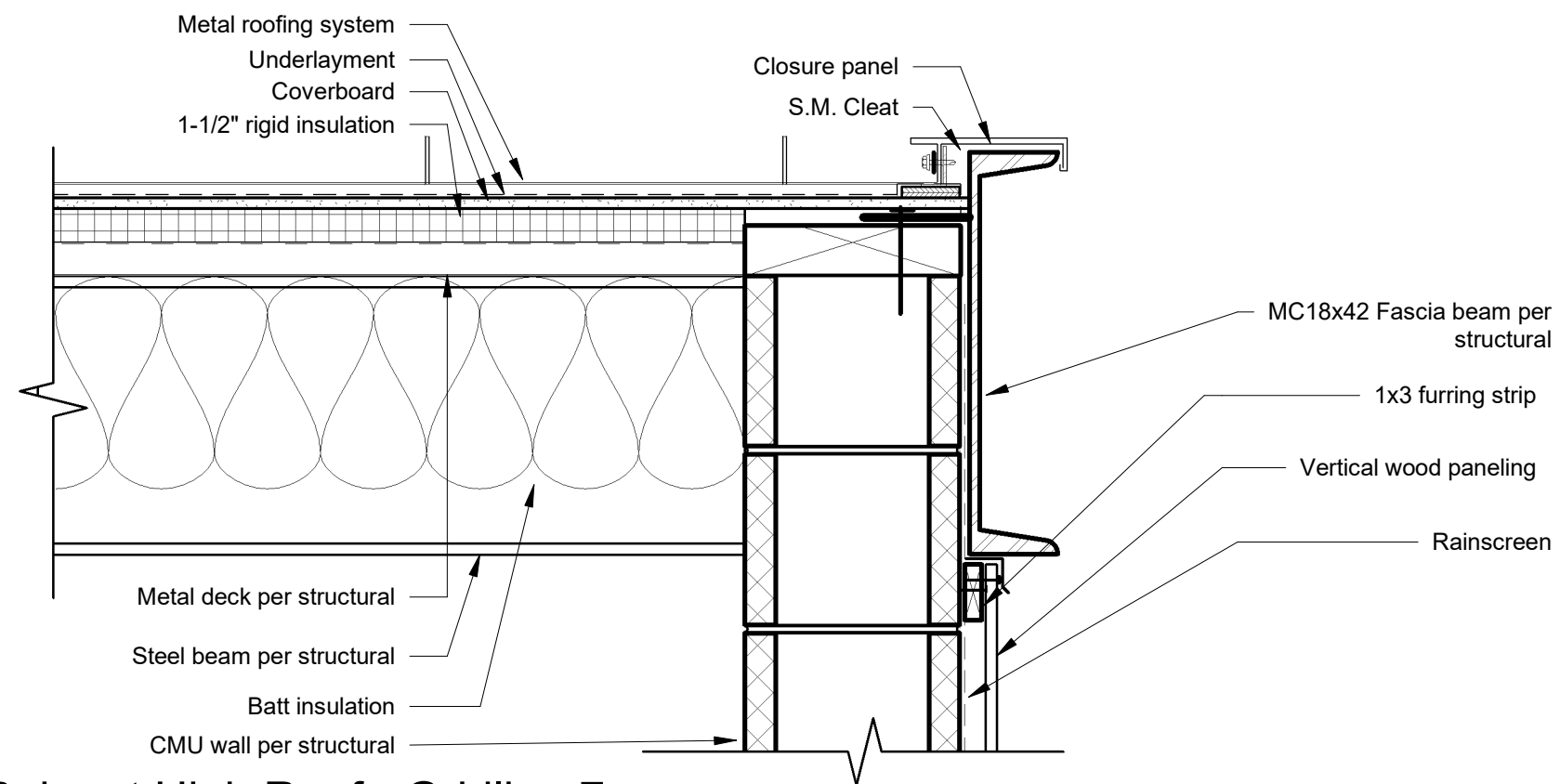
06/19/2020	Plan Check Submittal
REVISIONS:	
1	08/12/2020 Plan Check Revisions
2	10/08/2020 Addendum #1
3	10/28/2020 Addendum #2

PROJECT NUMBER:
2016-39

SHEET NUMBER:
AD2-01



1 AD2-Rake at High Roof Canopy
1 1/2" = 1'-0"



2 AD2-Rake at High Roof - Gridline 7
1 1/2" = 1'-0"



PAUL HALAJIAN ARCHITECTS

389 Clovis Ave, Suite 100
Clovis, CA 93612-1185
T: 559.297.7900 F: 559.297.7950
www.halajianarch.com

PAUL HALAJIAN ARCHITECTS expressly reserves its common law copyright and other property rights specifically related to the contents of these plans. This document and the ideas and designs incorporated herein, as an instrument of professional service rendered by PAUL HALAJIAN ARCHITECTS, is not to be used in whole or in part for any other project without prior written authorization from PAUL HALAJIAN ARCHITECTS.

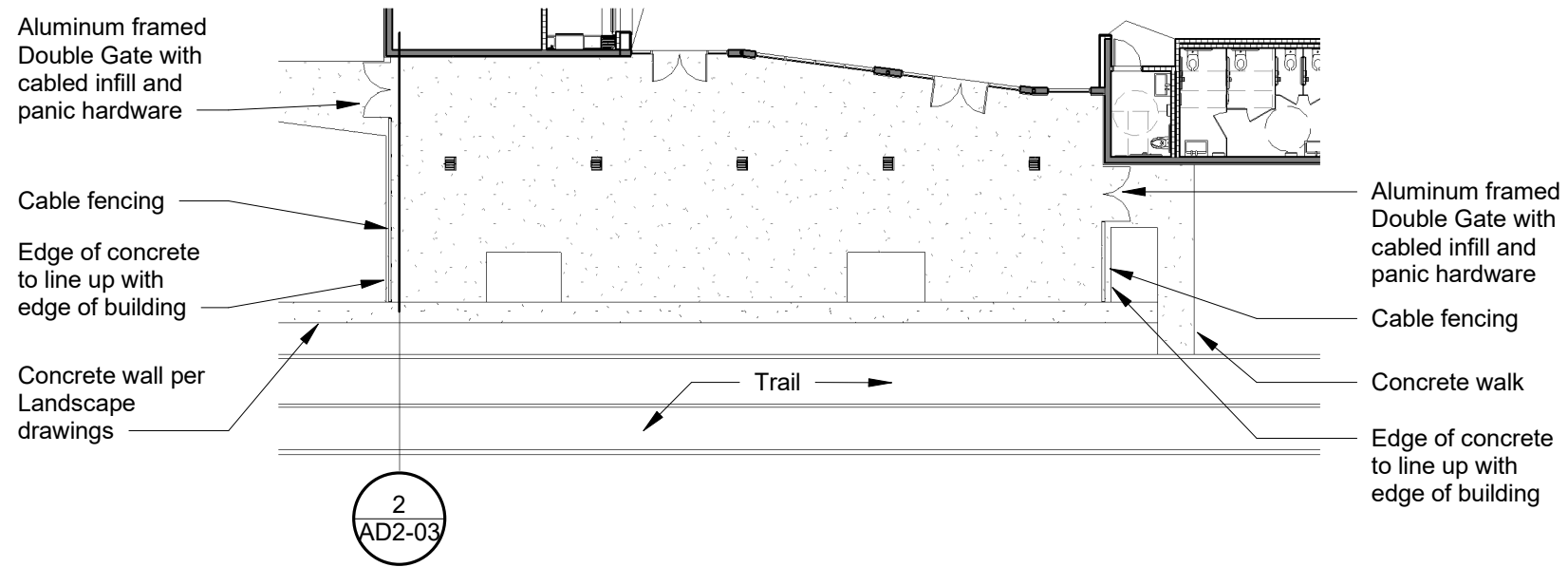
PROJECT:
Clovis Landmark Square
Senior Activity Center and Transit Center
735 Third Street, Clovis, CA 93612
SHEET: High Roof at Multi-Purpose

DRAWING SET INFORMATION:

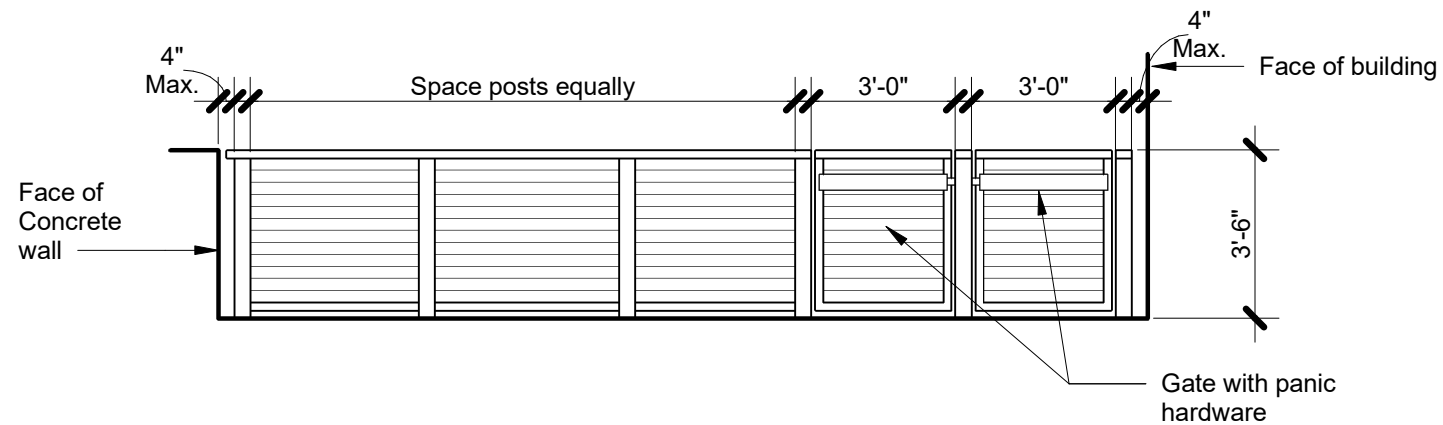
06/19/2020	Plan Check Submittal
REVISIONS:	
1	08/12/2020 Plan Check Revisions
2	10/08/2020 Addendum #1
3	10/28/2020 Addendum #2

PROJECT NUMBER:
2016-39

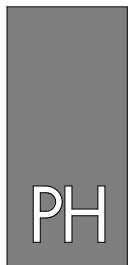
SHEET NUMBER:
AD2-02



1 Partial Site Plan Outdoor Patio
1" = 20'-0"



2 Fence Elevation
1/4" = 1'-0"



PAUL HALAJIAN ARCHITECTS

389 Clovis Ave, Suite 100
Clovis, CA 93612-1185
T: 559.297.7900 F: 559.297.7950
www.halajianarch.com

PAUL HALAJIAN ARCHITECTS expressly reserves its common law copyright and other property rights specifically related to the contents of these plans. This document and the ideas and designs incorporated herein, as an instrument of professional service rendered by PAUL HALAJIAN ARCHITECTS, is not to be used in whole or in part for any other project without prior written authorization from PAUL HALAJIAN ARCHITECTS.

PROJECT:
Clovis Landmark Square
Senior Activity Center and Transit Center
735 Third Street, Clovis, CA 93612
SHEET: Outdoor Space

DRAWING SET INFORMATION:

06/19/2020	Plan Check Submittal
------------	----------------------

REVISIONS:

1	08/12/2020	Plan Check Revisions
2	10/08/2020	Addendum #1
3	10/28/2020	Addendum #2

PROJECT NUMBER:
2016-39

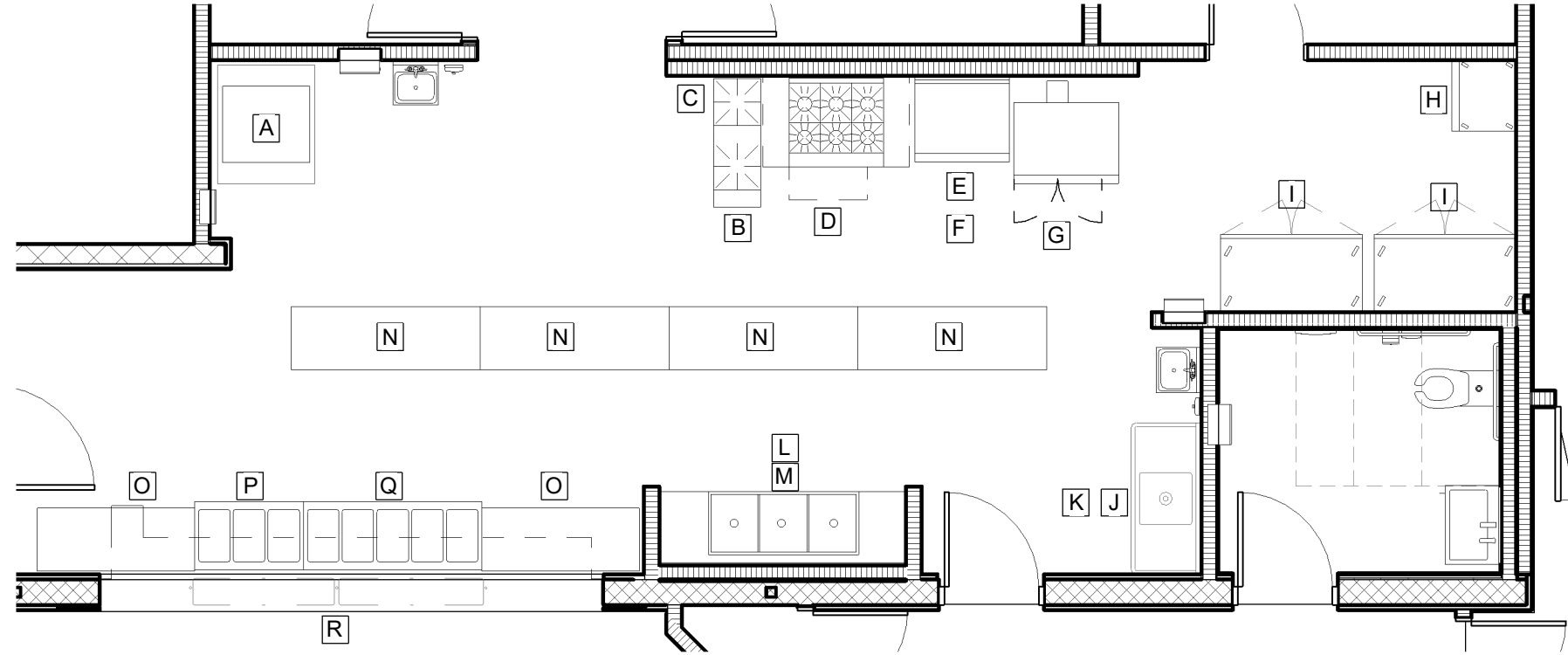
SHEET NUMBER:
AD2-03



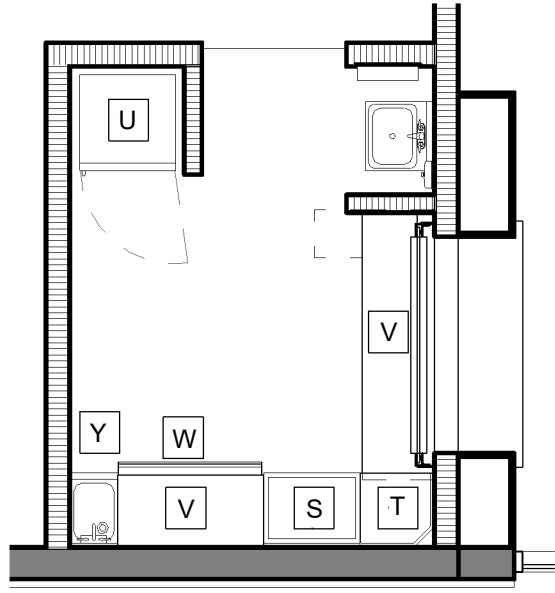
PAUL HALAJIAN ARCHITECTS

389 Clovis Ave, Suite 100
Clovis, CA 93612-1185
T: 559.297.7900 F: 559.297.7950
www.halajianarch.com

PAUL HALAJIAN ARCHITECTS expressly reserves its common law copyright and other property rights specifically related to the contents of these plans. This document and the ideas and designs incorporated herein, as an instrument of professional service rendered by PAUL HALAJIAN ARCHITECTS, is not to be used in whole or in part for any other project without prior written authorization from PAUL HALAJIAN ARCHITECTS.



② Senior Center Enlarged Floor Plan - Kitchen Equipment
3/16" = 1'-0"



Refer to Sheet A201 for Equipment Schedule

① Senior Center Enlarged Floor Plan - Bar/Sales Equipment
1/4" = 1'-0"



PROJECT:
Clovis Landmark Square
Senior Activity Center and Transit Center
735 Third Street, Clovis, CA 93612
SHEET: Kitchen Equipment Plan

DRAWING SET INFORMATION:

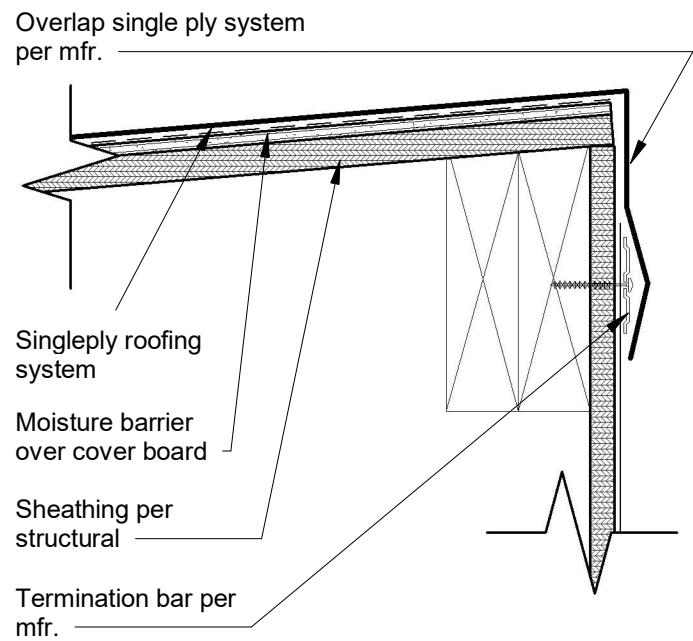
06/19/2020	Plan Check Submittal
------------	----------------------

REVISIONS:

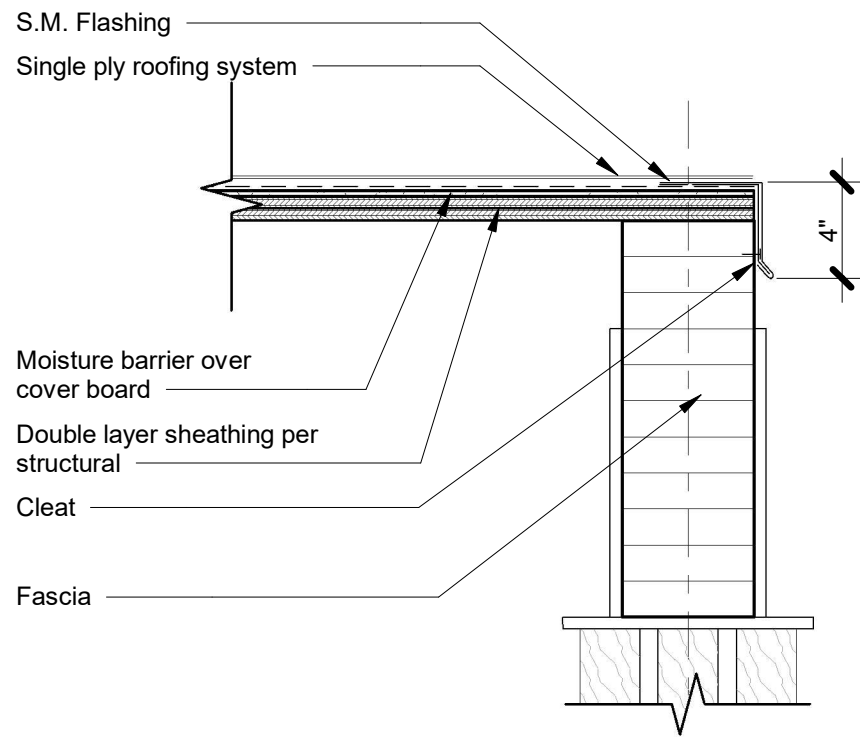
1	08/12/2020	Plan Check Revisions
2	10/08/2020	Addendum #1
3	10/28/2020	Addendum #2

PROJECT NUMBER:
2016-39

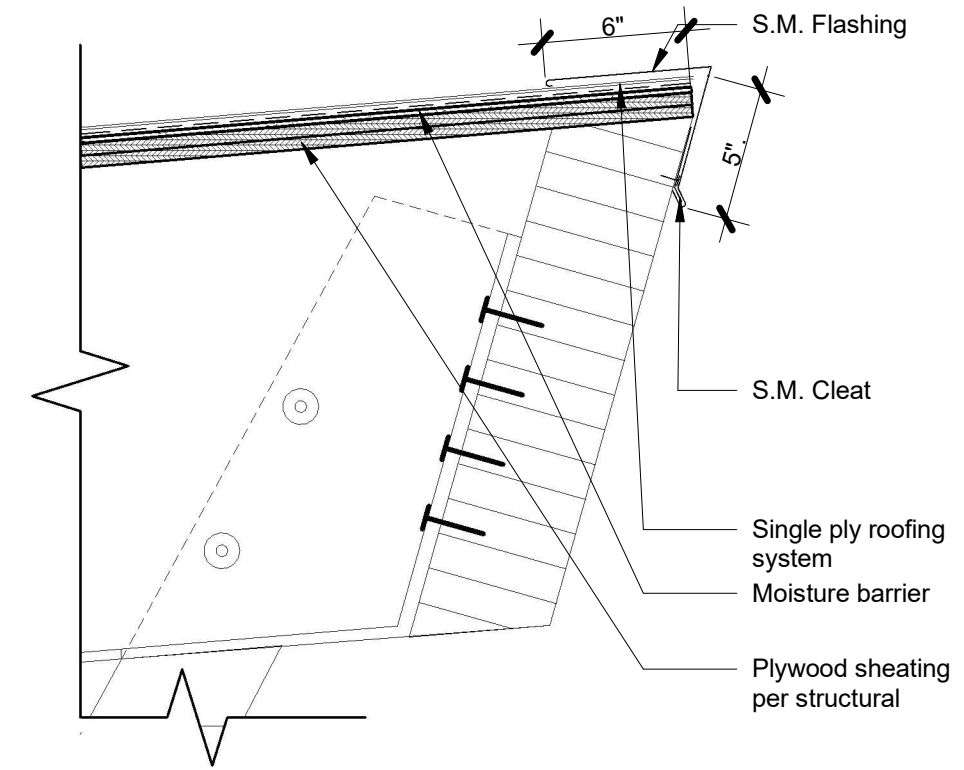
SHEET NUMBER:
AD2-04



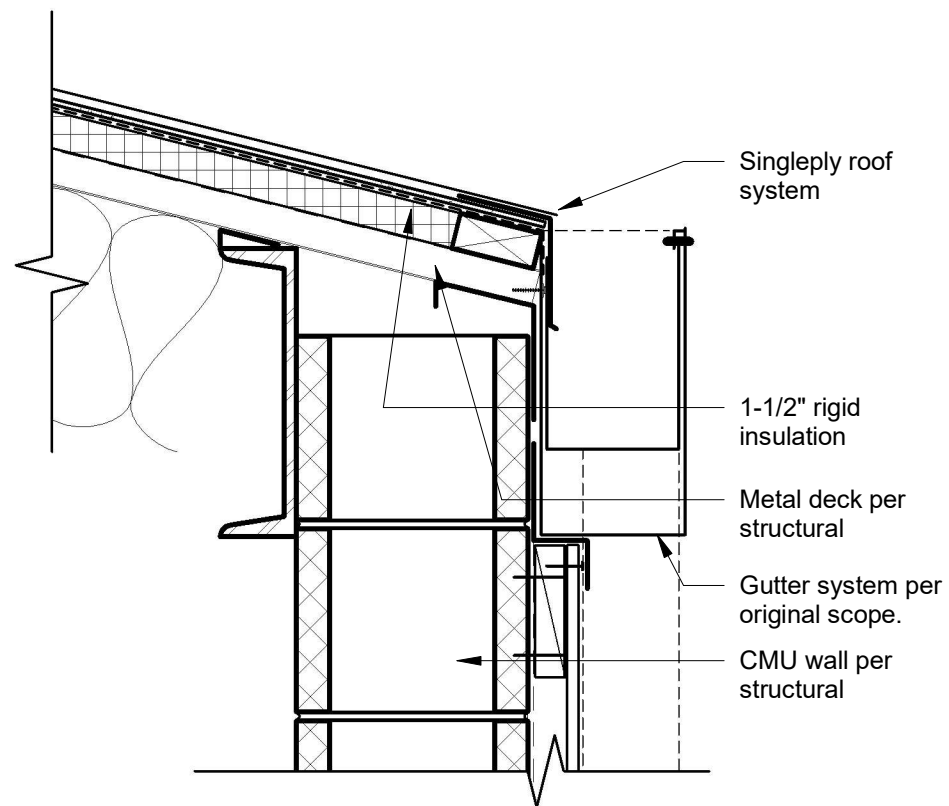
9 Alternate - Vertical transition
3" = 1'-0"



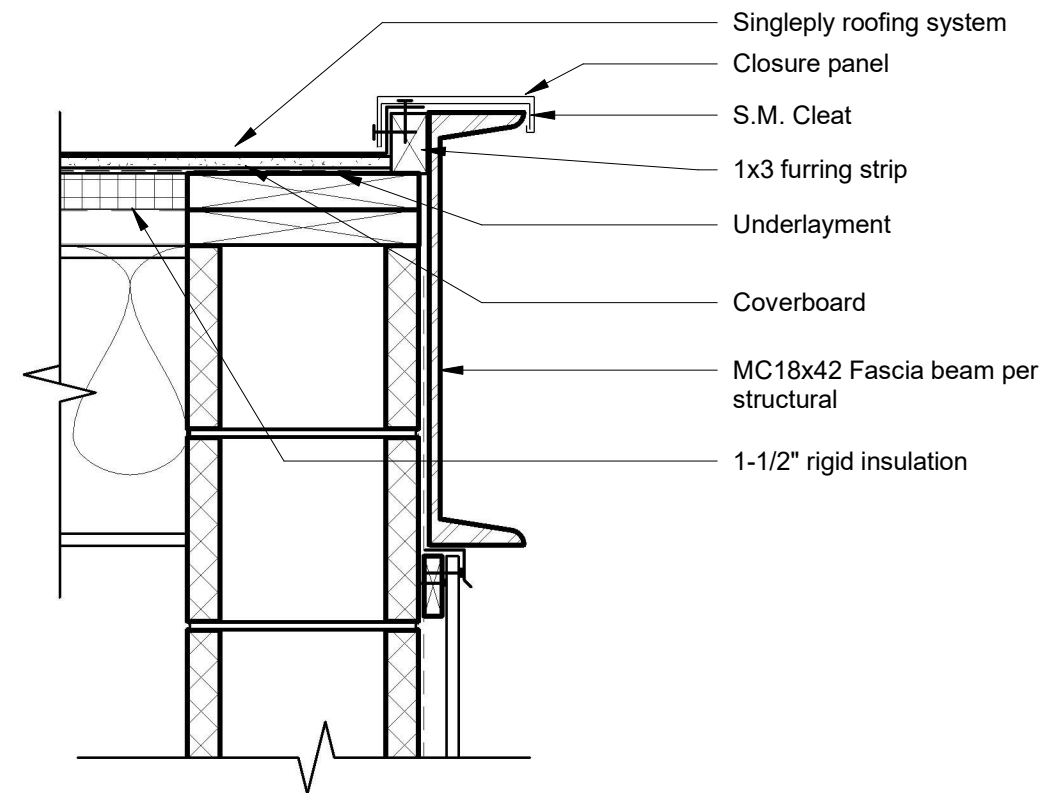
3 Alternate Rake at Roof
1 1/2" = 1'-0"



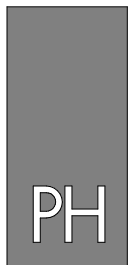
1 Alternate Top of Eave at Exposed Roof
1 1/2" = 1'-0"



4 Alternate-Eave at High Roof
1 1/2" = 1'-0"



2 Alternate-Rake at High Roof
1 1/2" = 1'-0"



PAUL HALAJIAN ARCHITECTS
389 Clovis Ave, Suite 100
Clovis, CA 93612-1185
T: 559.297.7900 F: 559.297.7950
www.halajianarch.com

PAUL HALAJIAN ARCHITECTS expressly reserves its common law copyright and other property rights specifically related to the contents of these plans. This document and the ideas and designs incorporated herein, as an instrument of professional service rendered by PAUL HALAJIAN ARCHITECTS, is not to be used in whole or in part for any other project without prior written authorization from PAUL HALAJIAN ARCHITECTS.

PROJECT:
Clovis Landmark Square
Senior Activity Center and Transit Center
735 Third Street, Clovis, CA 93612
SHEET: Senior Center Roof Plan - SINGLE PLY ALTERNATE

DRAWING SET INFORMATION:

06/19/2020	Plan Check Submittal
REVISIONS:	

PROJECT NUMBER:
2016-39
SHEET NUMBER:
AD4-01